



POET 70 M PLATFORM SUPPLY VESSEL

Vessel Characteristics

Length, Overall:	229.7 ft	70 m
Beam:	54.5 ft	16.6 m
Depth:	22.3 ft	6.8 m
Maximum Draft:	20.3 ft	6.2 m
Light Draft:	8.5 ft	2.6 m
Minimum Height:	79 ft	24.1 m
Freeboard:	3.3 ft	1 m
Displacement:	4,820 lt	4,900 mt
Deadweight:	2,940 lt	2,980 mt
Clear Deck Space:	140 x 44 ft	43 x 14 m
Clear Deck Area:	6,070 ft ²	560 m ²
Deck Strength AFT:	1,020 lb/ft ²	5 t/m ²
Class Notations:	ABS: +A1, FiFi-1, OSV, (E), +AMS, +DPS-2	

Capacities

Deck Cargo:	980 lt	1,000 t
Fuel Oil:	242,000 gal	920 m ³
Potable Water:	110,000 gal	420 m ³
Drill/Ballast Water:	184,000 gal	700 m ³
Bulk Tanks (4 tanks):	8,180 ft ³	230 m ³
Liquid Mud (2.5 SG*):	3,140 bbl	500 m ³
*Max Structural Specific Gravity		
Base Oil:	980 bbl	160 m ³
Brine:	1,040 bbl	160 m ³
Oil Dispersant:	2,960 gal	11.2 m ³
Fire Fighting Foam:	2,590 gal	9.8 m ³

TIDEWATER

Find out more

tdw.com

Pg.2 Further Specifications

Pg.4 Capacity Table

Pg.3 General Arrangement

Pg.5 DP Capability Plot



Machinery

Main Engines (2):	Niigata 8L28HX		
Total HP:	5,920		
Z-Drives:	Yes		
Propellers (2):	Niigata ZP-41 FPP		
Kort Nozzles:	2		
Primary Generators (4):	470 kw	450 v	60 hz
Driven by:	VOLVO D16C-AMG 1800		
Emergency Generators (1):	99 kw	450 v	60 hz
Driven by:	VOLVO D7A-T		
Bow Thruster (2):	NAKASHIMA TCT-120		
Driven by:	374 KW electric motor		
Total Thrust:	12.6 st	11.4 mt	

Deck Equipment

Anchors (2):	STOCKLESS 5027 LBS
Anchor Chain:	270 m of 43 mm chain per side
Windlass:	electro-hydraulic
Crane (1):	1 t @ 14 m
Capstans (2):	10 t ME 10THMW
Tugger (2):	10 t ME 10THTUW

Accommodations

No. of Berths:	50
Cabins:	8x1-man, 7x2-man & 7x4-man
Certified to Carry:	50
Galley seating:	30
Hospital:	Yes

Registration

Flag: VANUATU	Home Port: PORT VILA	
Hull Number: 1334	IMO NO: 9562726	
Year Built: 2010	Call Sign: YJQR6	
Builder:	JINGJIANG NANYANG SHIPYAD	
Tonnage (ITC):	2441 GT	732 NT

Performance*

Fuel Consumption Vs Speed		
Maximum:	18.2 m³/day (200 gph) @ 12.5 knots	
Cruising:	10.4 m³/day (110 gph) @ 10.5 knots	
Economical:	6.7 m³/day (74 gph) @ 8 knots	
Standby:	1.5 m³/day (16.5 gph) @ 0 knots	
Range @ 10.5 Knots:	22,200 nm	
Transfer Rates		
Fuel Oil:	440 gpm @ 330 ft	100 m³/h @ 100 m
Potable Water:	440 gpm @ 330 ft	100 m³/h @ 100 m
Drill/Ballast Water:	440 gpm @ 330 ft	100 m³/h @ 100 m
Bulk:	34.1 cfm @ 200 ft	57.9 m³/h @ 60 m
Liquid Mud:	330 gpm @ 260 ft	75 m³/h @ 80 m
Base Oil:	440 gpm @ 260 ft	100 m³/h @ 80 m
Brine:	310 gpm @ 260 ft	70 m³/h @ 80 m

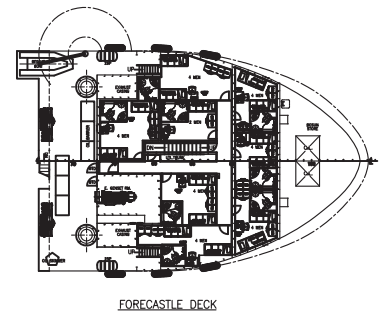
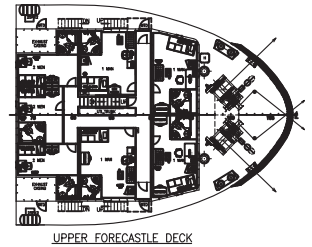
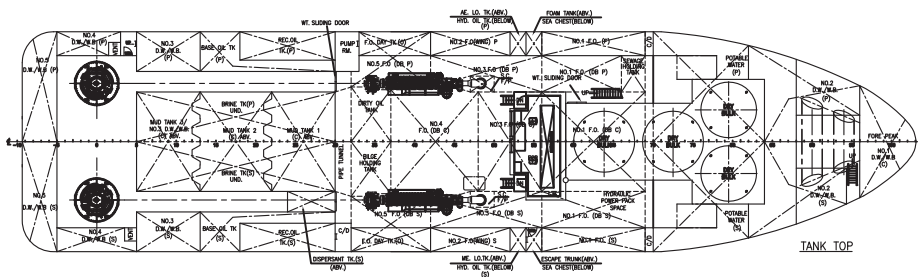
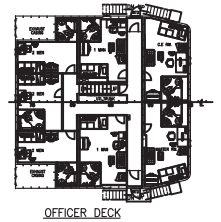
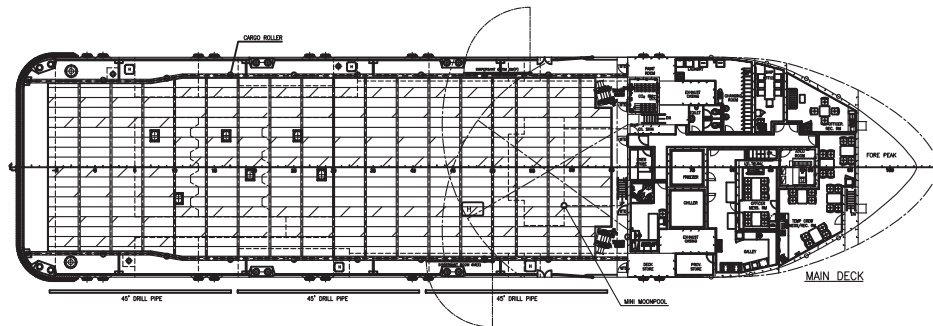
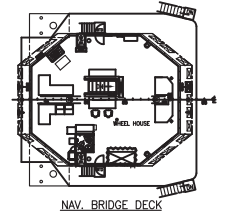
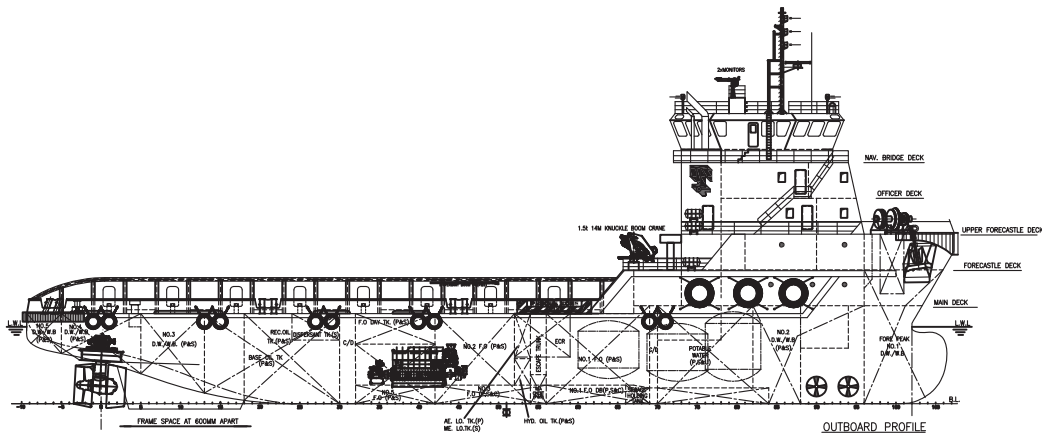
Nav/Comms Equipment

Radar(s):	2
Depth Sounder:	1
Cyro Compass:	3
Wind Speed Indicators:	3
Doppler Log:	1
Radio:	3 x VHF; 1 x SSB
Sat Com:	2XINMARSAT-C / VSAT

Special Equipment

Firefighting:	FiFi-1
Dynamic Positioning:	DP-2
Ref. Systems:	3 x MRU; 3 x DGPS 1 x Microwave-based; 1 x Laser-based
Water Maker:	25 T/DAY
Mud Circulation System/ Mud Mixers:	Yes/Yes
Rescue Zone:	Yes
Rescue Boat:	15-Man FRC
Fuel Monitoring:	FUELTRAX
Gas Detection:	FIXED GAS DETECTION
Reefer Sockets:	2x 440V 30A; 2x 440V 50A, 2x 220V 50A
Misc:	MSD - 65 Persons; RECOVERED OIL - 175.3 m3; Winching Zone; S-VDR, Eye Washing Station; Food Waste Grinder

*Approximate values assuming Ideal Conditions





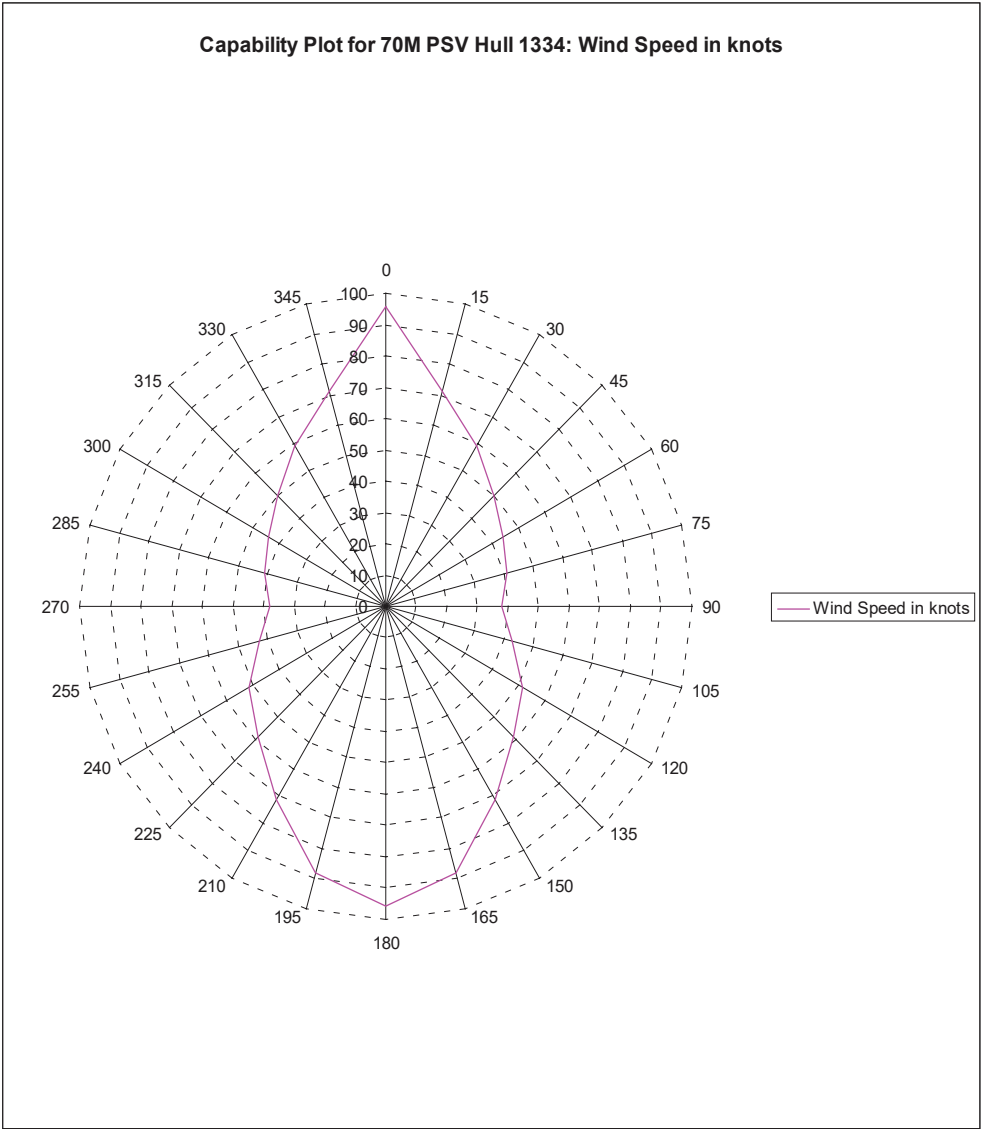
Tank	Contents	Volume m ³	Base Oil	Fuel Oil	Dry Bulk	DW/WB	Potable Water	Fresh Water	Brine	Liquid Mud	ORO	Lube Oil	Foam	Oil Disp.
NO.1 DW/WB C	DW/WB	197.1				197.1								
NO.2 DW/WB P	DW/WB	172.3				172.3								
NO.2 DW/WB S	DW/WB	166.4				166.4								
NO.3 DW/WB P	DW/WB	45.4				45.4								
NO.3 DW/WB S	DW/WB	45.4				45.4								
NO.4 DW/WB P	DW/WB	10.7				10.7								
NO.4 DW/WB S	DW/WB	15.0				15.0								
NO.5 DW/WB P	DW/WB	21.8				21.8								
NO.5 DW/WB S	DW/WB	21.8				21.8								
PW Tk P	Ship's FW	208.6					208.6							
PW Tk S	Ship's FW	208.6					208.6							
BO Tk P	FO/BO	77.8	77.8	77.8										
BO Tk S	FO/BO	77.8	77.8	77.8										
No. 1 FO Tk P	FO	89.2		89.2										
No. 1 FO Tk DBP	FO	22.6		22.6										
No. 1 FO Tk S	FO	89.2		89.2										
No. 1 FO Tk DBS	FO	29.4		29.4										
No. 1 FO Tk C	FO	80.3		80.3										
No. 2 FO Tk P	FO	72.7		72.7										
No. 2 FO Tk S	FO	72.7		72.7										
No. 3 FO Tk P	FO	28.3		28.3										
No. 3 FO Tk S	FO	28.3		28.3										
No. 3 FO Tk C	FO	49.4		49.4										
No. 4FO Tk DBC	FO	70.5		70.5										
No. 5 FO Tk P	FO	61.2		61.2										
No. 5 FO Tk S	FO	66.5		66.5										
FO Day Tk P	FO	22.0		22.0										
FO Day Tk S	FO	24.5		24.5										
ORO Tk P	ORO	87.7									87.7			
ORO Tk S	ORO	87.7									87.7			
BR Tk P	BRINE	82.4							82.4					
BR Tk S	BRINE	82.4							82.4					
Mud Tk 1	LM	192.9								192.9				
Mud Tk 2	LM	188.2								188.2				
Mud Tk 3	LM	118.3								118.3				
Dry Blk 1	Dry Bulk	57.9			57.9									
Dry Blk 2	Dry Bulk	57.9			57.9									
Dry Blk 3	Dry Bulk	57.9			57.9									
Dry Blk 4	Dry Bulk	57.9			57.9									
AE LO Tk P	LO	7.3										7.3		
ME LO Tk S	LO	7.3										7.3		
Dispersant Tk	Disp.	11.2												11.2
Foam Tk	Foam	9.8											9.8	
Total Volume [m ³]			155.7	962.3	231.6	696.0	417.1	0.0	164.9	499.4	175.3	14.5	9.8	11.2
Spec Sheet Total Volume [m ³]			155.7	915.8	231.6	696.0	417.1	0.0	164.9	499.4	175.3	14.5	9.8	11.2

*Capacities shown are for lead vessel. Actual capacities may vary slightly.

*Capacities shown in **RED** are excluded from the total volume.

*Capacities shown in **BLUE** are included in another Tank's Capacity.

*Capacities shown in **GREEN** are counted for multiple Tank Capacities.



Wind Angle is stepped from 0 to 360 deg.
Wave Angle is stepped from 0 to 360 deg.
Current Angle is stepped from 0 to 360 deg.

Wind Speed is Set Automatically.
Wave Height is Derived from Wind Speed.
Current Speed is 1.5 knots.

