

TROMS ARCTURUS



PSV 07 CD PLATFORM SUPPLY VESSEL

Vessel Characteristics

Length, Overall:	310.7 ft	94.7 m
Beam:	68.9 ft	21 m
Depth:	27.9 ft	8.5 m
Maximum Draft:	23 ft	7 m
Light Draft:	11.5 ft	3.5 m
Minimum Height:	92.5 ft	28.2 m
Freeboard:	4.9 ft	1.5 m
Displacement:	9,080 lt	9,220 mt
Deadweight:	5,520 lt	5,610 mt
Clear Deck Space:	230 x 57 ft	70 x 18 m
Clear Deck Area:	12,700 ft ²	1,180 m ²
Deck Strength FWD:	1,024lb/ft ²	5 t/m ²
Deck Strength AFT:	2,050 lb/ft ²	10 t/m ²
Class Notations:	DNV: +1A1, BATTERY(POWER), CLEAN(DESIGN), COM-F(C-3, V-2), DK(+), DYNPOS(AUTR), EO, HL(2.8), ICE(C), LFL(*), NAUT(OSV(A)), OILREC, SF, SHORE POWER, WINTERIZED(BASIC)	

Capacities

Deck Cargo:	3,540 lt	3,600 t
Fuel Oil:	389,000 gal	1,470 m ³
Potable Water:	53,600 gal	200 m ³
Fresh Water:	205,000 gal	780 m ³
Drill/Ballast Water:	573,000 gal	2,170 m ³
Bulk Tanks (6 tanks):	10,600 ft ³	300 m ³
Liquid Mud (2.8 SG*):	8,830 bbl	1,400 m ³
*Max Structural Specific Gravity		
Methanol:	950 bbl	150 m ³
Base Oil:	960 bbl	150 m ³
Brine:	2,560 bbl	410 m ³
Fire Fighting Foam:	1,880 gal	7.1 m ³

TIDEWATER

Find out more

tdw.com

Pg.2 Further Specifications

Pg.4 Capacity Table

Pg.3 General Arrangement

Pg.5 DP Capability Plot

NOTICE: The data contained herein is provided for convenience of reference to allow users to determine the suitability of the Company's equipment. The data may vary from the current condition of equipment which can only be determined by physical inspection. Company has exercised due diligence to insure that the data contained herein is reasonably accurate. However, Company does not warrant the accuracy or completeness of the data. In no event shall Company be liable for any damages whatsoever arising out of the use or inability to use the data contained herein.

LAST UPDATE: 11/21/2023

TROMS ARCTURUS

Further specifications



Machinery

Diesel Electric Hybrid Vessel	621 kWh Battery		
Propulsive/Total HP:	5,900 / 10,300		
Z-Drives:	Yes		
Propellers (2):	RRM AZP100 CP 2200kW		
Primary Generators (3):	2,460 kw	690 v	60 hz
Driven by:	RR Bergen Diesel C25:33 L8ACD		
Secondary Generators (1):	600 kw	690 v	60 hz
Driven by:	Scania DI1674M		
Emergency Generators (1):	200 kw	690 v	60 hz
Driven by:	Scania DI126M		
Bow Thruster (3):	2xRR TT2400 DNP CP; 1xRR TCNS 73/50 SWING DOWN		
Driven by:	2x1200kW; 1x880kW Electric Motor		
Total Thrust:	55.1 st	50 mt	

Deck Equipment

Anchors (2):	SPEK TYPE M 4050KG
Anchor Chain:	260 m of 50 mm chain per side
Windlass:	RR MW70F/AW50K3
Crane (1):	4 t @ 10.1 m
Aux. Crane (1):	2 t @ 5.2 m
Capstans (2):	10 t RR CH80F-D
Tugger (2):	10 t RR TUW 100 F

Accommodations

No. of Berths:	28
Cabins:	14x1-man& 7x2-man
Certified to Carry:	28
Galley seating:	20
Hospital:	Yes

Registration

Flag: NORWAY	Home Port: TROMS Ø
Hull Number: 817	IMO Nº: 9694000
Year Built: 2014	Call Sign: LKNL
Builder:	STX OSV AS
Tonnage (ITC):	4969 GT 1861 NT

Performance*

Fuel Consumption Vs Speed		
Maximum:	24.8 m³/day (270 gph) @ 16 knots	
Cruising:	14 m³/day (150 gph) @ 12 knots	
Economical:	12 m³/day (130 gph) @ 11 knots	
Standby:	3.5 m³/day (39 gph) @ 0 knots	
Range @ 12 Knots:	30,300 nm	
Transfer Rates		
Fuel Oil:	880 gpm @ 300 ft	200 m³/h @ 92 m
Fresh Water:	880 gpm @ 300 ft	200 m³/h @ 92 m
Drill/Ballast Water:	880 gpm @ 300 ft	200 m³/h @ 92 m
Bulk:	29.5 cfm @ 190 ft	50.1 m³/h @ 57 m
Liquid Mud:	440 gpm @ 800 ft	100 m³/h @ 240 m
Base Oil:	440 gpm @ 300 ft	100 m³/h @ 92 m
Brine:	440 gpm @ 800 ft	100 m³/h @ 240 m
Methanol:	330 gpm @ 300 ft	75 m³/h @ 92 m

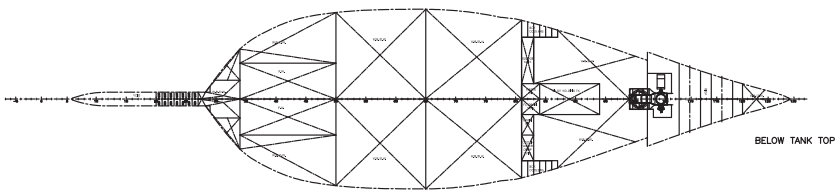
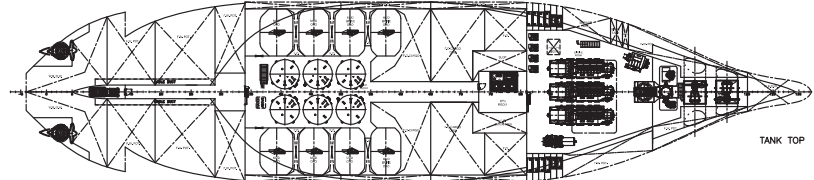
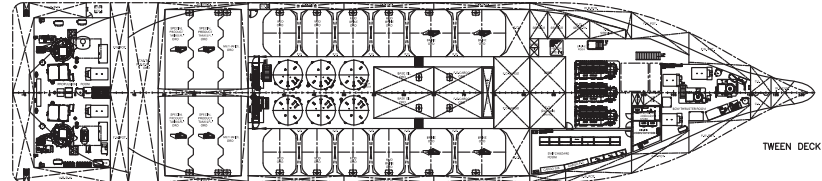
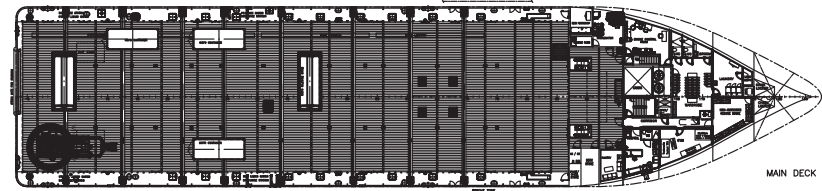
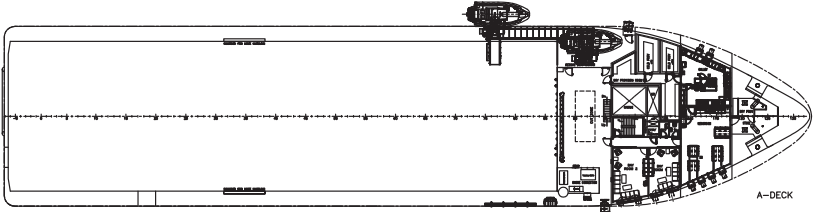
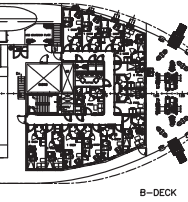
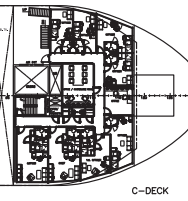
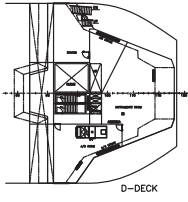
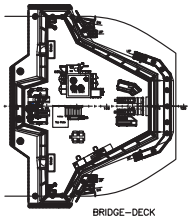
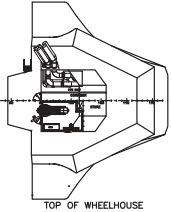
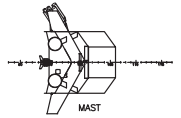
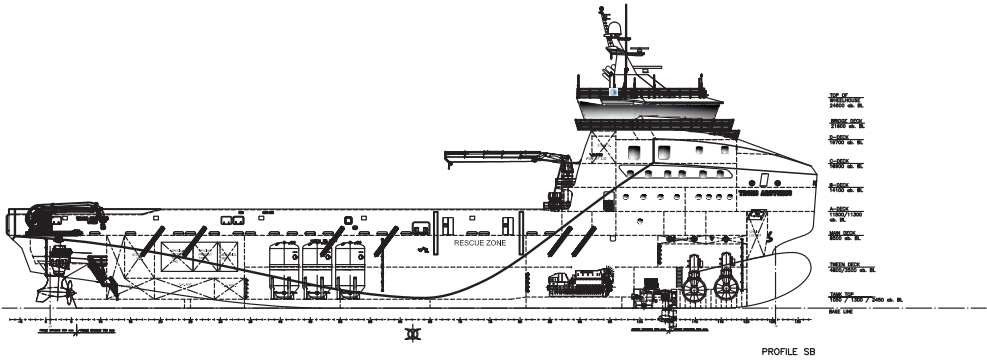
Nav/Comms Equipment

Radar(s):	2
Depth Sounder:	1
Gyro Compass:	3
Wind Speed Indicators:	2
Doppler Log:	1
Radio:	4 x VHF; 1 x SSB
Sat Com:	1XINMARSAT-C; 1XFLEET BROADBAND 250

Special Equipment

Dynamic Positioning:	DP-2
Ref. Systems:	3 x MRU; 2 x DGPS 1 x Microwave-based; 1 x Laser-based
Mud Circulation System/ Mud Mixers:	Yes/Yes
Tank Cleaning:	Yes
Rescue Zone:	Yes
Rescue Boat:	MARE GTC700-2VD
Fuel Monitoring:	GREEN PILOT
Misc:	ERN 99.99.99.99, NOFO 2009; ORO Capable - 2921.4 m3; 1 x Aero VHF; Bulk Air Dryers; Ballast Water Treatment System; MSD - 30 Persons

*Approximate values assuming Ideal Conditions



TROMS ARCTURUS

Capacity Table



Tank	Contents	Volume m ³	Base Oil	Fuel Oil	Dry Bulk	DW/WB	Potable Water	Fresh Water	Brine	Liquid Mud	Methanol	Lube Oil	Foam	Oil Disp.
01 WB/DW FP TK	DW/WB	155.9				155.9								
09 WB/DW TK P	DW/WB	62.8				62.8								
10 WB/DW TK S	DW/WB	15.1				15.1								
11 WB/DW TK P	DW/WB	56.5				56.5								
12 WB/DW TK S	DW/WB	56.5				56.5								
13 WB/DW TK P	DW/WB	51.7				51.7								
14 WB/DW TK S	DW/WB	51.7				51.7								
15 WB/DW TK P	DW/WB	39.5				39.5								
16 WB/DW TK S	DW/WB	46.6				46.6								
61 WB/DW TK P	DW/WB	76.7				76.7								
62 WB/DW TK S	DW/WB	76.7				76.7								
63 WB/DW TK P	DW/WB	131.2				131.2								
64 WB/DW TK S	DW/WB	131.2				131.2								
65 WB/DW TK P	DW/WB	136.9				136.9								
66 WB/DW TK S	DW/WB	136.9				136.9								
67 WB/DW TK P	DW/WB	85.5				85.5								
68 WB/DW TK S	DW/WB	85.5				85.5								
88 WB/ORO STAB TK C	DW/WB/ORO	341.6				341.6								
89 WB/DW STAB TK C	DW/WB	219.0				219.0								
100 WB/DW CD TK C	DW/WB	525.0				525.0								
102 WB/DW AP TK P	DW/WB	103.6				103.6								
103 WB/DW AP TK S	DW/WB	106.6				106.6								
04 POT TK S	Ship's FW	93.4					93.4							
05 POT TK P	Ship's FW	109.7					109.7							
06 POT TK S	FW	40.7						40.7						
07 POT TK P	FW	44.2						44.2						
08 POT TK S	FW	108.6						108.6						
17 POT TK P	FW	60.2						60.2						
18 POT TK S	FW	60.2						60.2						
19 POT TK P	FW	73.6						73.6						
20 POT TK S	FW	73.6						73.6						
21 POT TK P	FW	110.7						110.7						
22 POT TK S	FW	110.7						110.7						
106 POT TK P	FW	46.8						46.8						
107 POT TK S	FW	46.8						46.8						
23 CFO/ORO TK P	FO/ORO	232.6		232.6										
24 CFO/ORO TK S	FO/ORO	232.6		232.6										
25 CFO TK P	FO	143.5		143.5										
26 CFOTK S	FO	143.5		143.5										
29 CFO TK P	FO	64.0		64.0										
30 CFOTK S	FO	64.0		64.0										
31 FO TK P	FO	135.1		135.1										
32 FOTK S	FO	135.1		135.1										
33 FO TK P	FO	18.0		18.0										
34 FOTK S	FO	18.0		18.0										
35 FO TK P	FO	17.8		17.8										
36 FOTK S	FO	17.8		17.8										
37 FO TK P	FO	28.6		28.6										
38 FOTK S	FO	28.6		28.6										
39 FO TK P	FO	32.6		32.6										
40 FO TK S	FO	32.6		32.6										
41 FO TK P	FO	31.3		31.3										
42 FOTK S	FO	31.3		31.3										
82 FO SERV 3 TK P	FO	23.2		23.2										
83 FO SETTTL TK P	FO	25.3		25.3										
84 FO SERV 2 TK P	FO	22.9		22.9										
85 FO SERV 1 TK P	FO	24.9		24.9										
104 FO Overflow TK S	FO	58.3		58.3										
112 FO TK S	FO	64.0		64.0										
113 FO EMGEN TK	FO	3.3		3.3										
27 BO/ORO TK P	BO/ORO	76.1	76.1											
28 BO/ORO TK S	BO/ORO	76.1	76.1											
43 BRI/ORO TK P	BR/ORO	107.4							107.4					
44 BRI/ORO TK S	BR/ORO	107.4							107.4					
45 BRI/ORO TK P	BR/ORO	95.9							95.9					
46 BRI/ORO TK S	BR/ORO	95.9							95.9					
47 MUD/BRI/ORO TK P	LM/BR/ORO	127.9								127.9				
48 MUD/BRI/ORO TK S	LM/BR/ORO	127.9								127.9				
49 MUD/BRI/ORO TK P	LM/BR/ORO	126.7								126.7				
50 MUD/ORO TK S	LM/ORO	126.7								126.7				
51 MUD/ORO TK P	LM/ORO	122.0								122.0				
52 MUD/ORO TK S	LM/ORO	122.0								122.0				
53 MUD/ORO TK P	LM/ORO	125.0								125.0				
54 MUD/ORO TK S	LM/ORO	125.0								125.0				
71 MET/ORO TK P	METH/ORO	75.6									75.6			
72 MET/ORO TK S	METH/ORO	75.6									75.6			
73 SPEC/ORO TK P	SP/ORO	109.3								109.3				
74 SPEC/ORO TK S	SP/ORO	109.3								109.3				
75 SPEC/ORO TK P	SP/ORO	91.4								91.4				
76 SPEC/ORO TK S	SP/ORO	91.4								91.4				
77 LO	LO	11.4										11.4		
78 LO	LO	3.8										3.8		
79 LO/HO	LO	3.8										3.8		
121 LO	LO	0.3										0.3		
114 FOAM TK	FOAM	7.1											7.1	
55 CEM	Dry Bulk	50.1			50.1									
56 CEM	Dry Bulk	50.1			50.1									
57 CEM	Dry Bulk	50.1			50.1									
58 CEM	Dry Bulk	50.1			50.1									
59 CEM	Dry Bulk	50.1			50.1									
60 CEM	Dry Bulk	50.1			50.1									
Total Volume [m ³]			152.2	1,628.9	300.6	2,692.7	203.1	776.1	406.6	1,404.6	151.2	19.3	7.1	0.0
Spec Sheet Total Volume [m ³]			152.2	1,471.0	300.6	2,167.7	203.1	776.1	406.6	1,404.6	151.2	19.3	7.1	0.0

*Capacities shown are for lead vessel. Actual capacities may vary slightly.

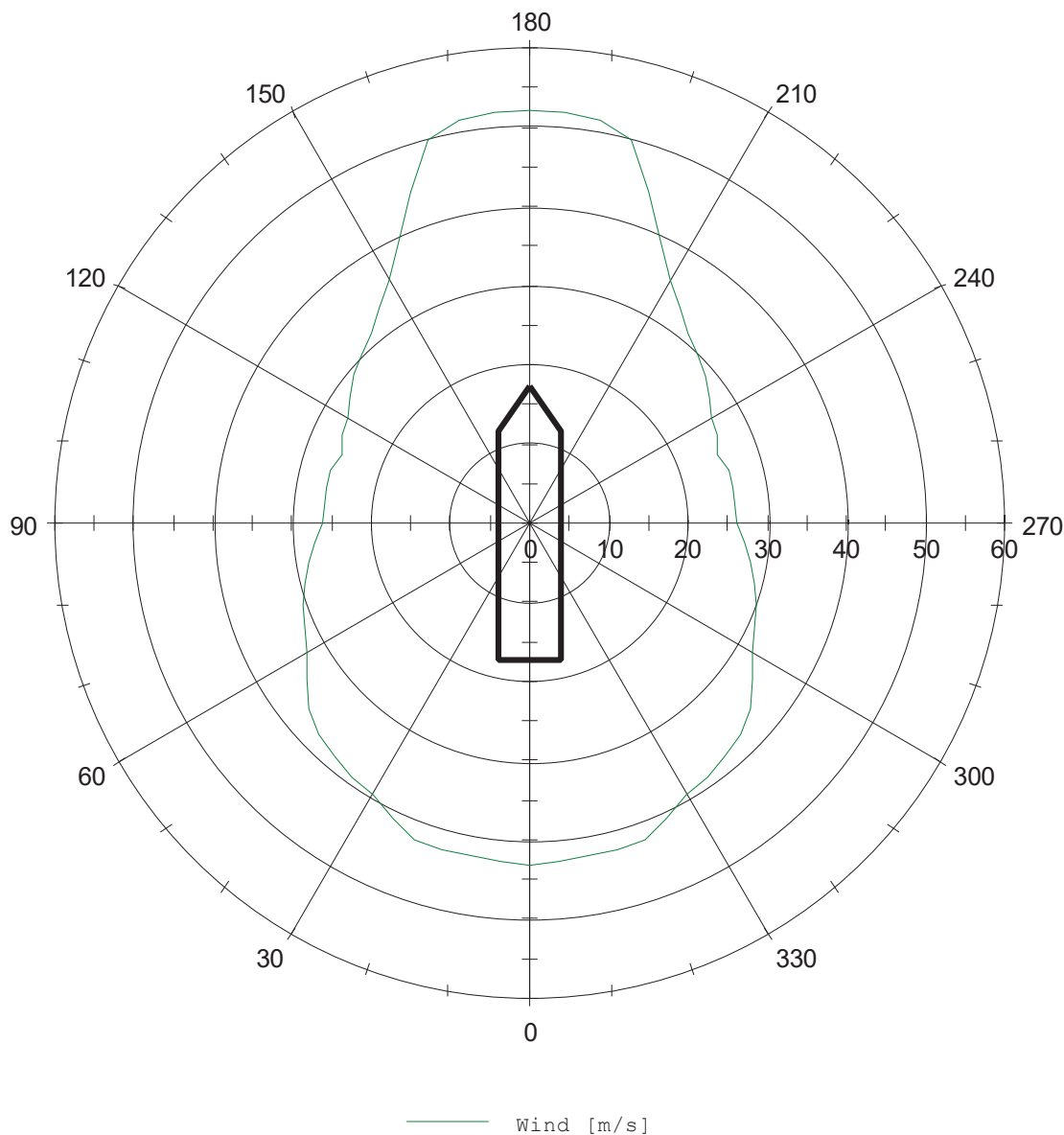
*Capacities shown in **RED** are excluded from the total volume.

*Capacities shown in **BLUE** are included in another Tank's Capacity.

*Capacities shown in **GREEN** are counted for multiple Tank Capacities.

TROMS ARCTURUS

DP Capability Plot



External:
Variable wind velocity rotating 360 deg
0.75 m/s wind generated current rotating 360 deg
Variable wave height rotating 360 deg