



**Vessel Characteristics**

Length, Overall:	229.6 ft	70 m
Beam:	54.5 ft	16.6 m
Depth:	22.3 ft	6.8 m
Maximum Draft:	20.3 ft	6.2 m
Light Draft:	8.6 ft	2.6 m
Minimum Height:	79 ft	24.1 m
Freeboard:	2 ft	0.6 m
Displacement:	4,820 lt	4,900 mt
Deadweight:	2,940 lt	2,990 mt
Clear Deck Space:	140 x 44 ft	42.6 x 13.5 m
Clear Deck Area:	6,070 ft <sup>2</sup>	560 m <sup>2</sup>
Deck Strength:	1,020 lb/ft <sup>2</sup>	5 t/m <sup>2</sup>
Class Notations:	ABS: +A1, FiFi-1, OSV, (E), +AMS, +DPS-2, RW	

# TIDEWATER<sup>®</sup>

## ANDERSON TIDE

### 70M PLATFORM SUPPLY VESSEL

## Capacities

Deck Cargo:	980 lt	1,000 t
Fuel Oil:	242,000 gal	920 m <sup>3</sup>
Potable Water:	110,000 gal	420 m <sup>3</sup>
Drill/Ballast Water:	184,000 gal	700 m <sup>3</sup>
Bulk Tanks (4 tanks):	8,180 ft <sup>3</sup>	230 m <sup>3</sup>
Liquid Mud (21 lbs/gal):	3,140 bbl	500 m <sup>3</sup>
Brine:	1,040 bbl	160 m <sup>3</sup>
Base Oil	980 bbl	160 m <sup>3</sup>
Oil Dispersant:	2,960 gal	11.2 m <sup>3</sup>
Fire Fighting Foam:	2,590 gal	9.8 m <sup>3</sup>

## Machinery

Main Engines (2):	Niigata 8L28HX		
Total HP:	5,920		
Z-Drives:	Yes		
Kort Nozzles:	2		
Primary Generators (4):	470 kw	450 v	60 hz
Driven by:	VOLVO D16C-AMG 1800		
Emergency Generators (1):	99 kw	450 v	60 hz
Driven by:	VOLVO D7A-T		
Bow Thruster (2):	NAKASHIMA TCT-120		
Driven by:	374 KW Electric Motor		
Total Thrust:	12.6 st	11.4 mt	

## Deck Equip.

Anchor(s) (2):	5027 lbs Stockless
Anchor Chain:	270 m of 43.2 mm chain per side
Crane:	1 t @ 14 m
Capstans (2):	5 t ME 5THVC
Tugger (2):	10 t ME 10THTUW

## Accommodations

Nº of Berths:	50
1-man cabins:	8
2-man cabins:	7
4-man cabins:	7
Certified to Carry:	50
Hospital:	Yes

## Performance

(Approximate values assuming Ideal Conditions)		
<i>Fuel Consumption Vs Speed</i>		
Maximum:	18 m <sup>3</sup> /day (200 gph) @ 12.5 knots	
Cruising:	10 m <sup>3</sup> /day (110 gph) @ 10.5 knots	
Economical:	6.7 m <sup>3</sup> /day (74 gph) @ 8 knots	
<i>Transfer Rates</i>		
Fuel Oil:	440 gpm @ 260 ft	99.9 m <sup>3</sup> /h @ 80 m
Potable Water:	440 gpm @ 260 ft	100 m <sup>3</sup> /h @ 80 m
Drill/Ballast Water:	440 gpm @ 260 ft	100 m <sup>3</sup> /h @ 80 m
Bulk:	34.1 cfm @ 230 ft	57.9 m <sup>3</sup> /h @ 71 m
Liquid Mud:	330 gpm @ 260 ft	74.9 m <sup>3</sup> /h @ 80 m
Base Oil:	440 gpm @ 260 ft	99.9 m <sup>3</sup> /h @ 80 m
Brine:	310 gpm @ 260 ft	69.9 m <sup>3</sup> /h @ 80 m

## Nav/Comms Equip.

Radar(s):	2
Depth Sounder:	1
Gyro Compass:	3
Doppler Log:	1
Satelite Comms:	2xINMARSAT-C / FLEET F55
Radio:	2 x VHF; 1 x SSB

## Special Equip.

Firefighting:	FIFI-1
Dynamic Positioning:	KONGSBERG DP-2
Ref. Systems:	3 x MRU; 3 x DGPS 1 x Laser-based; 1 x Radar-based
Mud Mixers:	Yes
Rescue Boat:	SOLAS APPROVED 6-MAN MOB

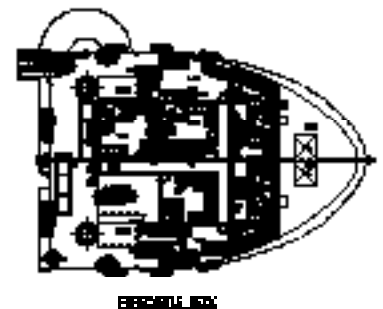
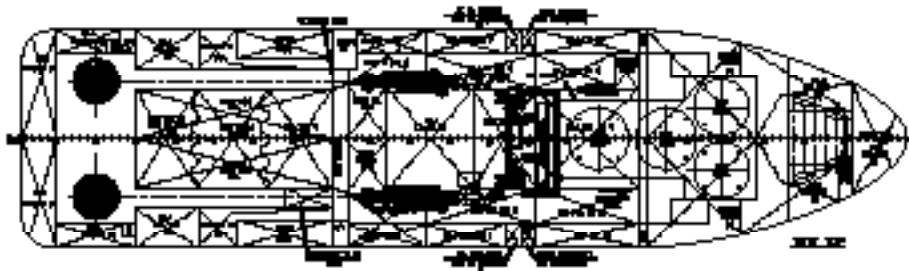
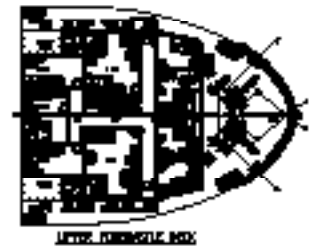
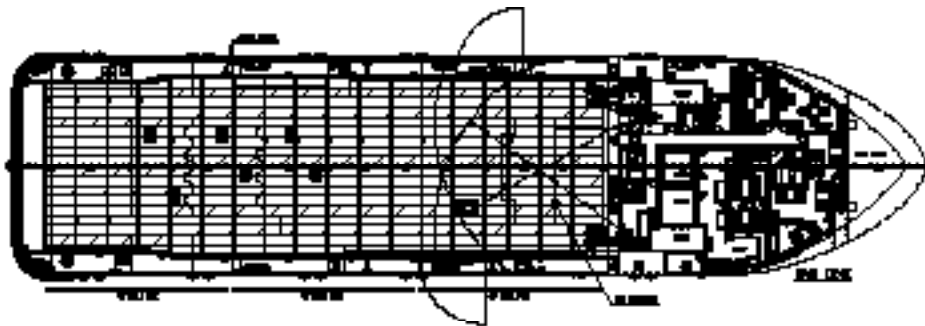
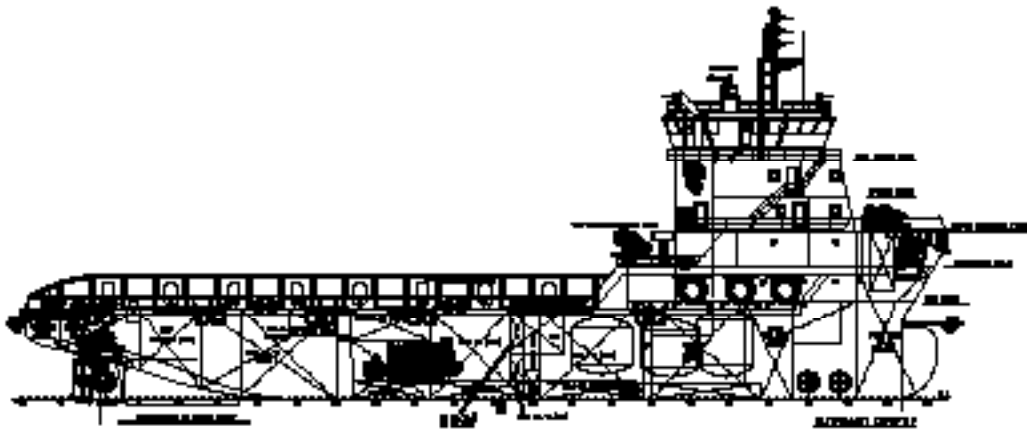
## Registration

Flag:	VANUATU	
IMO Nº:	9562726	
Year Built:	2010	
Builder:	JINGJIANG NANYANG SHIPYARD	
Call Sign:	YJQR6	
Tonnage (ITC):	2441 GT	732 NT

NOTICE: The data contained herein is provided for convenience of reference to allow users to determine the suitability of the Company's equipment. The data may vary from the current condition of equipment which can only be determined by physical inspection. Company has exercised due diligence to insure that the data contained herein is reasonably accurate. However, Company does not warrant the accuracy or completeness of the data. In no event shall Company be liable for any damages whatsoever arising out of the use or inability to use the data contained herein. Fuel consumption figures are historically conservative approximations.

# TIDEWATER® ANDERSON TIDE

General Arrangement (Current configuration may vary.)



NOTICE: The data contained herein is provided for convenience of reference to allow users to determine the suitability of the Company's equipment. The data may vary from the current condition of equipment which can only be determined by physical inspection. Company has exercised due diligence to insure that the data contained herein is reasonably accurate. However, Company does not warrant the accuracy or completeness of the data. In no event shall Company be liable for any damages whatsoever arising out of the use or inability to use the data contained herein. Fuel consumption figures are historically conservative approximations.

## Capacity Table

Tank	Contents	Volume m <sup>3</sup>	Base Oil	Fuel Oil	Dry Bulk	DW/WB	Potable Water	Fresh Water	Brine	Liquid Mud	ORO	Lube Oil	Foam	Oil Disp.
No.1 DW/WB C	DW/WB	197.1				197.1								
No.2 DW/WB P	DW/WB	172.3				172.3								
No.3 DW/WB S	DW/WB	166.4				166.4								
No.3 DW/WB P	DW/WB	45.4				45.4								
No.3 DW/WB S	DW/WB	45.4				45.4								
No.4 DW/WB P	DW/WB	10.7				10.7								
No.4 DW/WB S	DW/WB	15.0				15.0								
No.5 DW/WB P	DW/WB	21.8				21.8								
No.5 DW/WB S	DW/WB	21.8				21.8								
FW Tk P	Ship's FW	208.6					208.6							
FW Tk S	Ship's FW	208.6					208.6							
FO Tk P	FO/BO	77.8	77.8	77.8										
FO Tk S	FO/BO	77.8	77.8	77.8										
No. 1 FO Tk P	FO	89.2		89.2										
No. 1 FO Tk SPP	FO	22.6		22.6										
No. 1 FO Tk S	FO	89.2		89.2										
No. 1 FO Tk SPP	FO	29.4		29.4										
No. 1 FO Tk C	FO	80.3		80.3										
No. 3 FO Tk P	FO	72.7		72.7										
No. 3 FO Tk S	FO	72.7		72.7										
No. 3 FO Tk P	FO	28.3		28.3										
No. 3 FO Tk S	FO	28.3		28.3										
No. 3 FO Tk C	FO	49.4		49.4										
No. 4FO Tk OSC	FO	70.5		70.5										
No. 5 FO Tk P	FO	61.2		61.2										
No. 5 FO Tk S	FO	66.5		66.5										
FO Dry Tk P	FO	22.0		22.0										
FO Dry Tk S	FO	24.5		24.5										
ORO Tk P	ORO	87.7									87.7			
ORO Tk S	ORO	87.7									87.7			
BR Tk P	BRINE	82.4						82.4						
BR Tk S	BRINE	82.4						82.4						
LM Tk 1	LM	192.9								192.9				
LM Tk 2	LM	188.2								188.2				
LM Tk 3	LM	118.3								118.3				
Dry Bk 1	Dry Bulk	57.9			57.9									
Dry Bk 2	Dry Bulk	57.9			57.9									
Dry Bk 3	Dry Bulk	57.9			57.9									
Dry Bk 4	Dry Bulk	57.9			57.9									
AE LO Tk P	LO	7.3										7.3		
AE LO Tk S	LO	7.3										7.3		
Dispersion Tk	Disp.	11.2												11.2
Foam Tk	Foam	9.8											9.8	
Total Volume [m <sup>3</sup> ]			155.7	962.3	231.6	696.0	417.1	0.0	164.9	499.4	175.3	14.5	9.8	11.2
Spec Sheet Total Volume [m <sup>3</sup> ]			155.7	915.8	231.6	696.0	417.1	0.0	164.9	499.4	175.3	14.5	9.8	11.2

\*Capacities shown are for load vessel. Actual capacities may vary slightly.

\*Capacities shown in **RED** are excluded from the total volume.

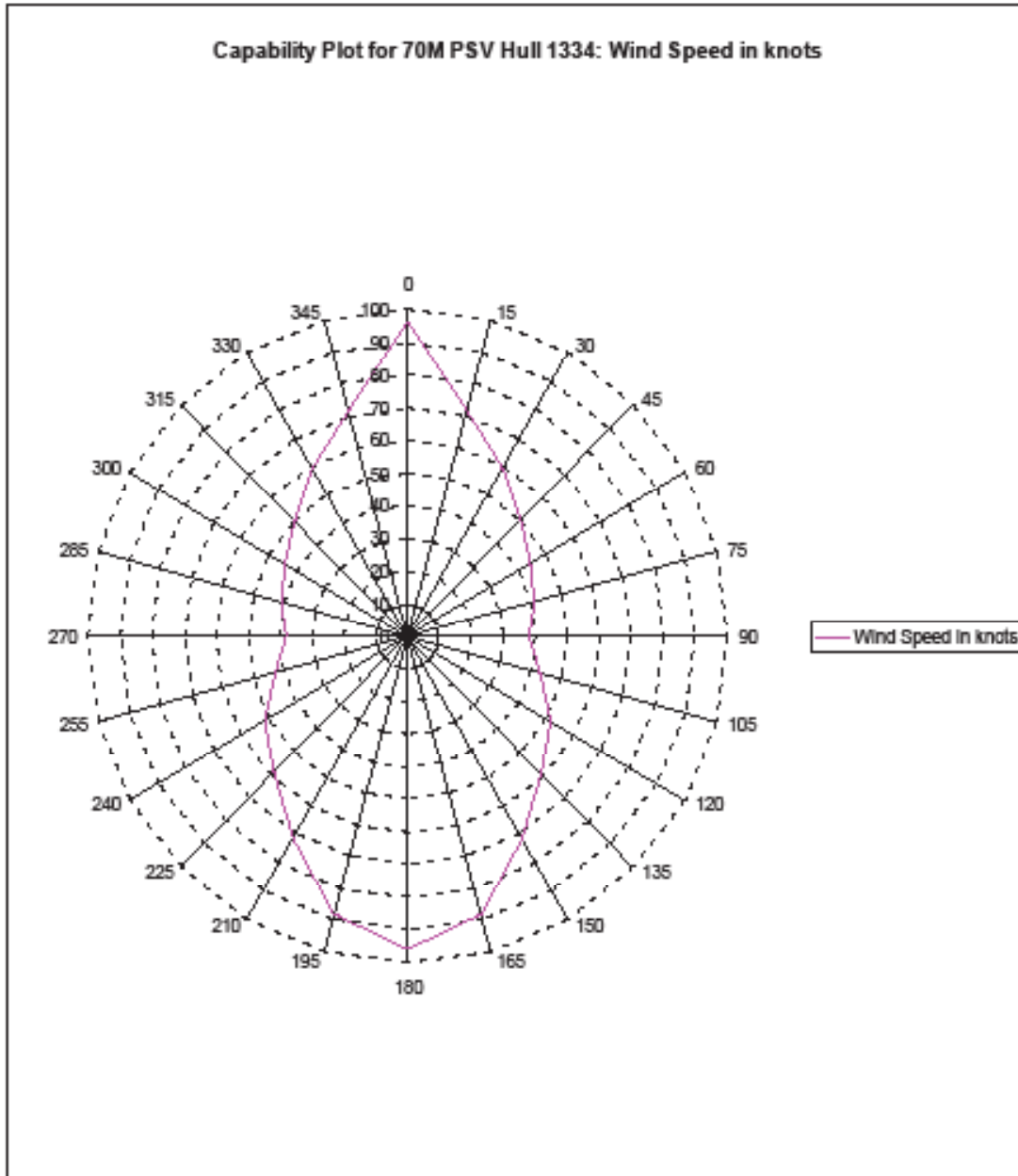
\*Capacities shown in **BLUE** are included in another Tank's Capacity.

\*Capacities shown in **GREEN** are counted for multiple Tank Capacities.

NOTICE: The data contained herein is provided for convenience of reference to allow users to determine the suitability of the Company's equipment. The data may vary from the current condition of equipment which can only be determined by physical inspection. Company has exercised due diligence to insure that the data contained herein is reasonably accurate. However, Company does not warrant the accuracy or completeness of the data. In no event shall Company be liable for any damages whatsoever arising out of the use or inability to use the data contained herein. Fuel consumption figures are historically conservative approximations.

## Capability Plot for 70M PSV Hull 1334

December 9, 2010 04:21



Wind Angle is stepped from 0 to 360 deg.  
Wave Angle is stepped from 0 to 360 deg.  
Current Angle is stepped from 0 to 360 deg.

Wind Speed is Set Automatically.  
Wave Height is Derived from Wind Speed.  
Current Speed is 1.5 knots.



Weather Direction

Wind at 0 degrees ↓  
Current at 90 degrees ←  
Waves

Ship Direction



NOTICE: The data contained herein is provided for convenience of reference to allow users to determine the suitability of the Company's equipment. The data may vary from the current condition of equipment which can only be determined by physical inspection. Company has exercised due diligence to insure that the data contained herein is reasonably accurate. However, Company does not warrant the accuracy or completeness of the data. In no event shall Company be liable for any damages whatsoever arising out of the use or inability to use the data contained herein. Fuel consumption figures are historically conservative approximations.