



HART TIDE as shown, BAILEY TIDE similar

## MMC-887 HYBRID PLATFORM SUPPLY VESSEL

### Vessel Characteristics

Length, Overall:	285.8 ft	871 m
Beam:	61.7 ft	18.8 m
Depth:	24.3 ft	7.4 m
Maximum Draft:	20 ft	6.1 m
Light Draft:	7.6 ft	2.3 m
Minimum Height:	91.2 ft	27.8 m
Freeboard:	4.6 ft	1.4 m
Displacement:	7,600 lt	7,720 mt
Deadweight:	5,110 lt	5,190 mt
Clear Deck Space:	175 x 52 ft	53 x 16 m
Clear Deck Area:	9,800 ft <sup>2</sup>	910 m <sup>2</sup>
Deck Strength AFT:	1,020 lb/ft <sup>2</sup>	5 t/m <sup>2</sup>
Class Notations:	ABS: +A1, (E), +AMS, +DPS-2, FFV-1, OSV, UWILD, ESS-LiBATTERY	

### Capacities

Deck Cargo:	2,790 lt	2,840 t
Fuel Oil:	240,000 gal	910 m <sup>3</sup>
Potable Water:	44,300 gal	170 m <sup>3</sup>
Fresh Water:	530,000 gal	2,010 m <sup>3</sup>
Drill/Ballast Water:	86,700 gal	330 m <sup>3</sup>
Bulk Tanks (5 tanks):	14,700 ft <sup>3</sup>	420 m <sup>3</sup>
Liquid Mud (2.4 SG*):	15,200 bbl	2,410 m <sup>3</sup>
*Max Structural Specific Gravity		
Methanol:	2,700 bbl	430 m <sup>3</sup>

## TIDEWATER

Find out more

[tdw.com](https://tdw.com)

Pg.2 Further Specifications  
Pg.3 General Arrangement

Pg.4 Capacity Table  
Pg.5 DP Capability Plot

Machinery

Diesel Electric Hybrid Vessel	750 kWh Battery		
Propulsive/Total HP:	5,360 / 10,200		
Z-Drives:	Yes		
Propellers (2):	4-Blade FP Rolls-Royce		
Kort Nozzles:	2		
Primary Generators (4):	1,820 kw	480 v	60 hz
Driven by:	Cummins QSK60-D(M)		
Emergency Generators (1):	150 kw	480 v	60 hz
Driven by:	Cummins 6CTA8.3-D(M)		
Bow Thruster (2):	1220 Hp CPP TT, 1073 Hp CPP DD		
Driven by:	Electric Motor Driven		
Total Thrust:	28.7 st	26 mt	

Performance\*

Fuel Consumption Vs Speed		
Maximum:	28 m³/day (310 gph) @ 14 knots	
Cruising:	12.5 m³/day (140 gph) @ 10 knots	
Economical:	10 m³/day (110 gph) @ 8 knots	
Standby:	2.3 m³/day (25 gph) @ 0 knots	
Range @ 10 Knots:	17,400 nm	
Transfer Rates		
Fuel Oil:	660 gpm @ 300 ft	150 m³/h @ 92 m
Fresh Water:	660 gpm @ 300 ft	150 m³/h @ 92 m
Drill/Ballast Water:	660 gpm @ 300 ft	150 m³/h @ 92 m
Bulk:	49 cfm @ 180 ft	83.2 m³/h @ 56 m
Liquid Mud:	660 gpm @ 190 ft	150 m³/h @ 58 m
Methanol:	330 gpm @ 300 ft	75 m³/h @ 92 m

Deck Equipment

Anchors (2):	5456 lbs HHP
Anchor Chain:	250 m of 50 mm chain per side
Windlass:	Electric, 65/32 kn @10/20 m/m
Crane (1):	2 t @ 10.1 m
Capstans (2):	7.5 t Electric, 328 ft. of .5 in.
Tugger (2):	10 t ELECTRIC, PLIMSOLL

Nav/Comms Equipment

Radar(s):	2
Depth Sounder:	1
Cyro Compass:	3
Wind Speed Indicators:	3
Doppler Log:	1
Radio:	3 x VHF; 1 x SSB

Accommodations

No. of Berths:	52
Cabins:	16x1-man, 10x2-man & 4x4-man
Certified to Carry:	52
Galley seating:	30
Hospital:	Yes

Special Equipment

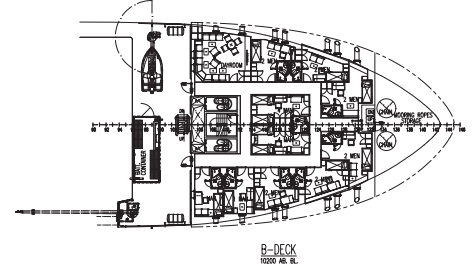
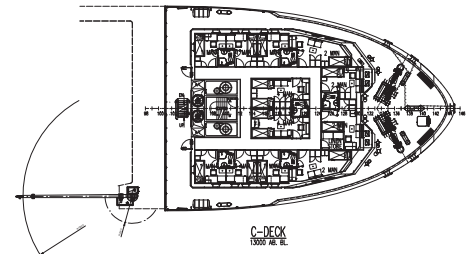
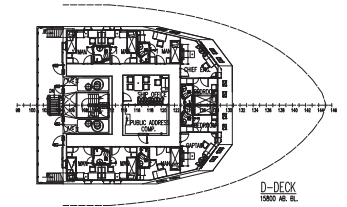
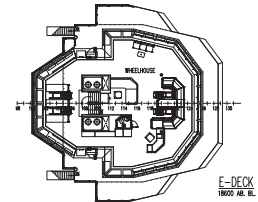
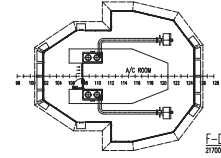
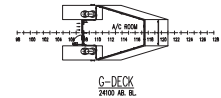
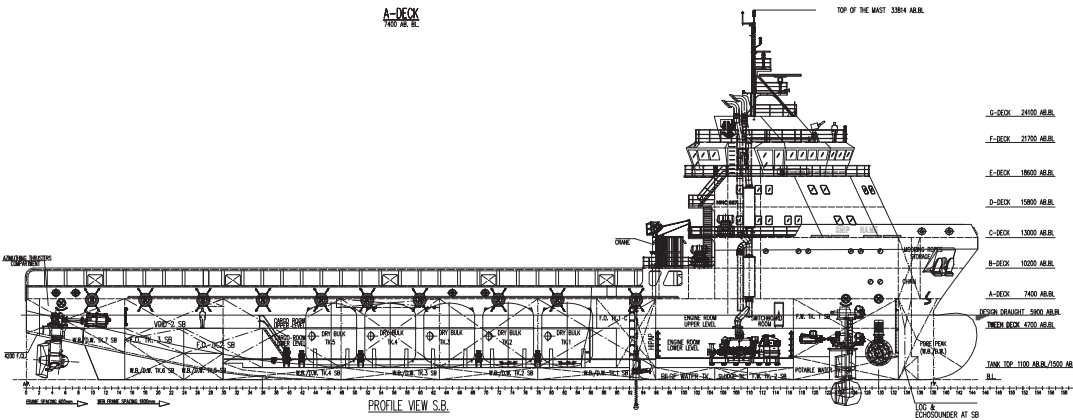
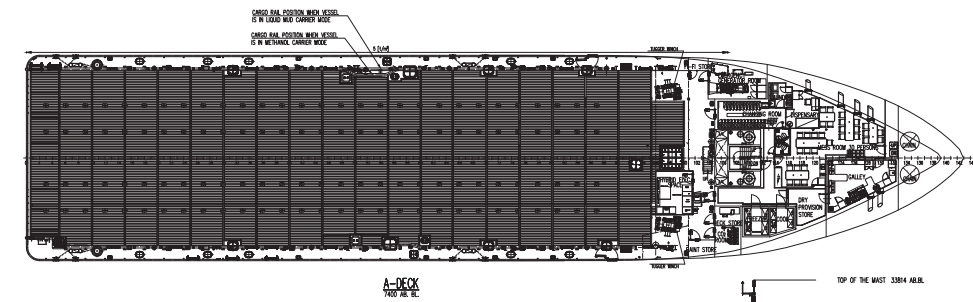
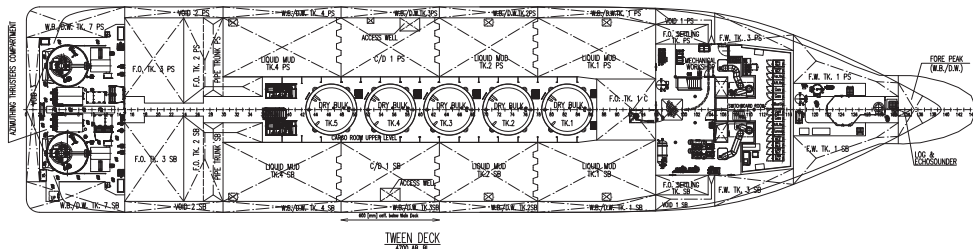
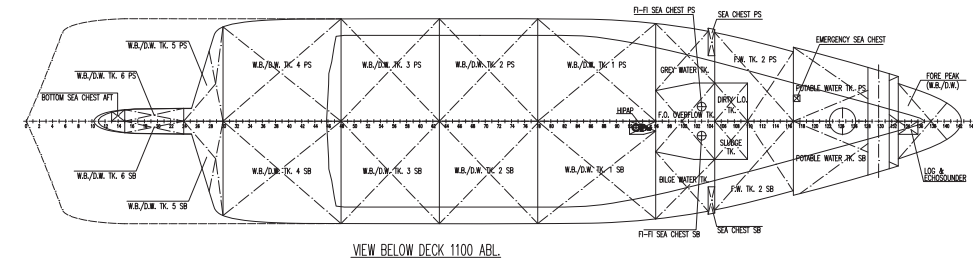
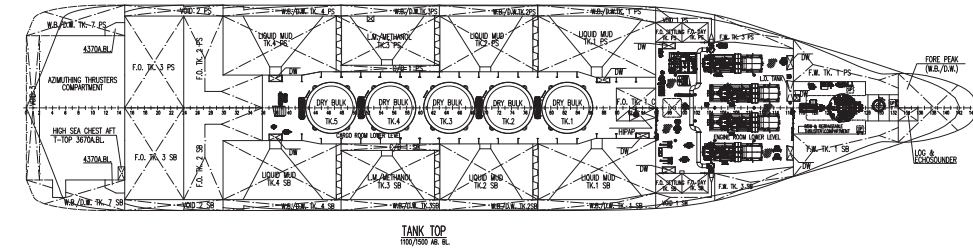
Firefighting:	FiFi-1
Dynamic Positioning:	DP-2
Ref. Systems:	2 x MRU; 2 x DGPS 1 x Microwave-based; 1 x Laser-based
Mud Circulation System	Yes
Tank Cleaning:	Yes
Rescue Boat:	Solas Approved
Fuel Monitoring:	FuelTrax
Reefer Sockets:	4x 480V 32A
Misc:	SEWAGE TREATMENT - 60 Persons

Registration

Flag: VANUATU	Home Port: PORT VILA
Hull Number: 6192	IMO N <sup>o</sup> : 9533567
Year Built: 2011	Call Sign: YJQW2
Builder:	FUJIAN MAWEI
Tonnage (ITC):	3601 GT 1429 NT

\*Approximate values assuming Ideal Conditions





# BAILEY TIDE

## Capacity Table



Tank Table														
Tank	Contents	Volume m <sup>3</sup>	Base Oil	Fuel Oil	Dry Bulk	DW/WB	Potable Water	Fresh Water	Brine	Liquid Mud	Methanol	Lube Oil	Foam	Oil Disp.
Fore Peak	DW/WB	184.0				184.0								
WB/DW Tk 1 PS	DW/WB	184.0				184.0		184.0						
WB/DW Tk 1 SB	DW/WB	180.9				180.9		180.9						
WB/DW Tk 2 PS	DW/WB	152.5				152.5		152.5						
WB/DW Tk 2 SB	DW/WB	152.5				152.5		152.5						
WB/DW Tk 3 PS	DW/WB	150.9				150.9		150.9						
WB/DW Tk 3 SB	DW/WB	150.9				150.9		150.9						
WB/DW Tk 4 PS	DW/WB	165.9				165.9		165.9						
WB/DW Tk 4 SB	DW/WB	165.9				165.9		165.9						
WB/DW Tk 5 PS	DW/WB	42.4				42.4		42.4						
WB/DW Tk 5 SB	DW/WB	42.4				42.4		42.4						
WB/DW Tk 6 PS	DW/WB	57.8				57.8		57.8						
WB/DW Tk 6 SB	DW/WB	57.8				57.8		57.8						
WB/DW Tk 7 PS	DW/WB	75.0				75.0								
WB/DW Tk 7 SB	DW/WB	69.3				69.3								
FW Tk 1 PS	FW	129.7						129.7						
FW Tk 1 SB	FW	129.7						129.7						
FW Tk 2 PS	FW	40.5						40.5						
FW Tk 2 SB	FW	40.5						40.5						
FW Tk 3 PS	FW	80.9						80.9						
FW Tk 3 SB	FW	80.9						80.9						
Potable Water Tk PS	Ships FW	83.7					83.7							
Potable Water Tk SB	Ships FW	84.1					84.1							
FO Overflow Tk	FO	35.9		35.9										
FO Day Tk PS	FO	15.2		15.2										
FO Day Tk SB	FO	15.2		15.2										
FO Settling Tk PS	FO	38.1		38.1										
FO Settling Tk SB	FO	38.1		38.1										
FO Tk 1 C	FO	100.3		100.3										
FO Tk 2 PS	FO	183.8		183.8										
FO Tk 2 SB	FO	183.8		183.8										
FO Tk 3 PS	FO	182.6		182.6										
FO Tk 3 SB	FO	182.6		182.6										
Liquid Mud Tk 1 PS	LM	362.0								362.0				
Liquid Mud Tk 1 SB	LM	362.0								362.0				
Liquid Mud Tk 2 PS	LM	286.8								286.8				
Liquid Mud Tk 2 SB	LM	286.8								286.8				
Liquid Mud Tk 4 PS	LM	341.3								341.3				
Liquid Mud Tk 4 SB	LM	341.3								341.3				
LM/Methanol Tk 3 PS	LM/METH	214.7								214.7	214.7			
LM/Methanol Tk 3 SB	LM/METH	214.7								214.7	214.7			
Lube Oil Tk	LO	1.9										1.9		
Dry Bulk Tk 1	Dry Bulk	83.2			83.2									
Dry Bulk Tk 2	Dry Bulk	83.2			83.2									
Dry Bulk Tk 3	Dry Bulk	83.2			83.2									
Dry Bulk Tk 4	Dry Bulk	83.2			83.2									
Dry Bulk Tk 5	Dry Bulk	83.2			83.2									
Total Volume [m <sup>3</sup> ]			0.0	975.8	415.8	1,832.2	167.9	2,006.2	0.0	2,409.7	429.4	1.9	0.0	0.0
Spec Sheet Total Volume [m <sup>3</sup> ]			0.0	909.4	415.8	328.3	167.9	2,006.2	0.0	2,409.7	429.4	1.9	0.0	0.0

\*Capacities shown are for lead vessel. Actual capacities may vary slightly.

\*Capacities shown in **RED** are excluded from the total volume.

\*Capacities shown in **BLUE** are included in another Tank's Capacity.

\*Capacities shown in **GREEN** are counted for multiple Tank Capacities.



KONGSBERG

DP Capability Plot
MAWEI 619-1

Case number : 1
Case description :
Thrusters active : T1-T4
Rudders active :

Table with 2 columns: Parameter and Value. Includes input file reference, last modified date, vessel dimensions (length, breadth, draught), displacement, inertia, wind load coefficients, tidal current direction offset, wave direction offset, wave spectrum type, wind spectrum type, current-wave-drift interaction, load dynamics allowance, additional surge force, additional sway force, additional yawing moment, additional force direction, density of salt water, density of air, power limitations, and thrust loss calculation.

