

TROMS CAPELLA



PSV 09 CD PLATFORM SUPPLY VESSEL

Vessel Characteristics

Length, Overall:	289 ft	88.1 m
Beam:	62.3 ft	19 m
Depth:	26.3 ft	8 m
Maximum Draft:	21.7 ft	6.6 m
Light Draft:	10.2 ft	3.1 m
Minimum Height:	100 ft	31.5 m
Freeboard:	4.6 ft	1.4 m
Displacement:	7,420 lt	7,540 mt
Deadweight:	4,590 lt	4,660 mt
Clear Deck Space:	205 x 52 ft	63 x 16 m
Clear Deck Area:	10,800 ft ²	1000 m ²
Deck Strength FWD:	1,024 lb/ft ²	5 t/m ²
Deck Strength AFT:	2,050 lb/ft ²	10 t/m ²
Class Notations:	DNV: +1A1, SUPPLY VESSEL, CLEAN(DESIGN), COMF(V-3), DK(+), DYNPOS(AUTR), EO, HL(2.8), LFL(*), NAUT(OSV(A)), SF	

Capacities

Deck Cargo:	2,400 lt	2,440 t
Fuel Oil:	256,000 gal	970 m ³
Potable Water:	39,600 gal	150 m ³
Fresh Water:	231,000 gal	880 m ³
Drill/Ballast Water:	590,000 gal	2,230 m ³
Bulk Tanks (6 tanks):	11,400 ft ³	320 m ³
Liquid Mud (2.8 SG*):	6,060 bbl	960 m ³
*Max Structural Specific Gravity		
Methanol:	1,050 bbl	170 m ³
Base Oil:	1,180 bbl	190 m ³

TIDEWATER

Find out more

tdw.com

Pg.2 Further Specifications
Pg.3 General Arrangement

Pg.4 Capacity Table
Pg.5 DP Capability Plot

NOTICE: The data contained herein is provided for convenience of reference to allow users to determine the suitability of the Company's equipment. The data may vary from the current condition of equipment which can only be determined by physical inspection. Company has exercised due diligence to insure that the data contained herein is reasonably accurate. However, Company does not warrant the accuracy or completeness of the data. In no event shall Company be liable for any damages whatsoever arising out of the use or inability to use the data contained herein.

LAST UPDATE: 11/20/2023

TROMS CAPELLA

Further specifications



Machinery

Diesel Electric Vessel			
Propulsive/Total HP:	5,900 / 8,590		
Z-Drives:	Yes		
Propellers (2):	Rolls Royce Marine 2200kW		
Primary Generators (4):	1,600 kw	690 v	60 hz
Driven by:	Wartsila 9L20		
Emergency Generators (1):	370 kw	690 v	60 hz
Driven by:	Cummins Stamford HCM534C		
Bow Thruster (2):	Rolls Royce 1xTunnel, 1xDrop Down		
Driven by:	880kW Electric Motor		
Total Thrust:	29.5 st	26.8 mt	

Deck Equipment

Anchors (2):	3920 KG
Anchor Chain:	260 m of 48.3 mm chain per side
Windlass:	2 x ODIM BRATTVAAG
Crane (1):	2 t @ 6.7 m
Aux. Crane (1):	1 t @ 7.9 m
Capstans (2):	10 t BRATTVAAG
Tugger (2):	10 t BRATTVAAG

Accommodations

No. of Berths:	44
Cabins:	10x1-man & 17x2-man
Certified to Carry:	44
Galley seating:	28
Hospital:	Yes

Registration

Flag: ISLE OF MAN	Home Port: DOUGLAS
Hull Number: 81	IMO N ^o : 9480722
Year Built: 2011	Call Sign: 2HDJ5
Builder:	COCHIN SHIPYARD LIMITED
Tonnage (ITC):	4059 GT 1627 NT

Performance*

Fuel Consumption Vs Speed		
Maximum:	28.2 m³/day (310 gph) @ 15 knots	
Cruising:	16 m³/day (180 gph) @ 11 knots	
Economical:	13.2 m³/day (140 gph) @ 10.3 knots	
Standby:	3.6 m³/day (40 gph) @ 0 knots	
Range @ 11 Knots:	16,000 nm	
Transfer Rates		
Fuel Oil:	660 gpm @ 300 ft	150 m³/h @ 92 m
Fresh Water:	660 gpm @ 300 ft	150 m³/h @ 92 m
Drill/Ballast Water:	1,100 gpm @ 300 ft	250 m³/h @ 92 m
Bulk:	31.5 cfm @ 190 ft	53.5 m³/h @ 57 m
Liquid Mud:	440 gpm @ 800 ft	100 m³/h @ 240 m
Base Oil:	330 gpm @ 300 ft	75 m³/h @ 92 m
Brine:	440 gpm @ 800 ft	100 m³/h @ 240 m
Methanol:	330 gpm @ 300 ft	75 m³/h @ 92 m

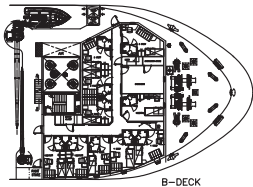
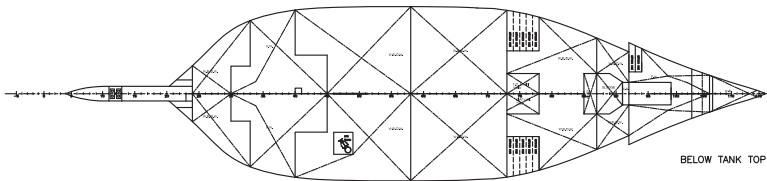
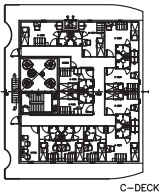
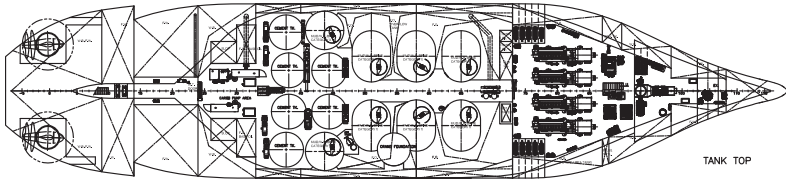
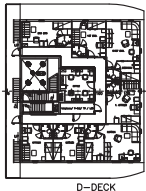
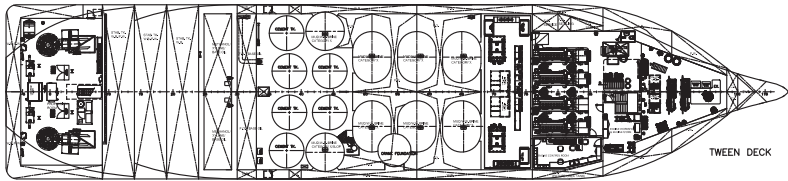
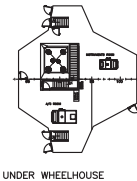
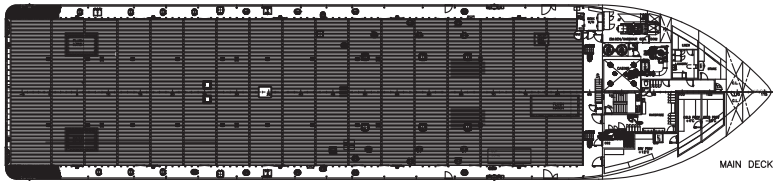
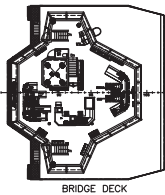
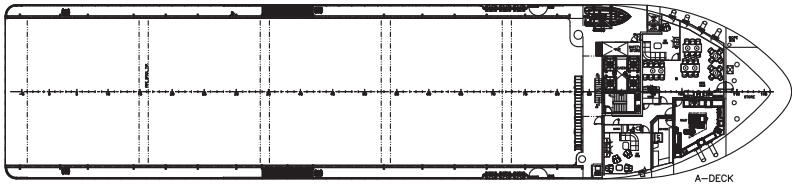
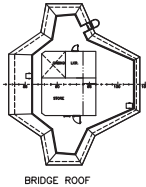
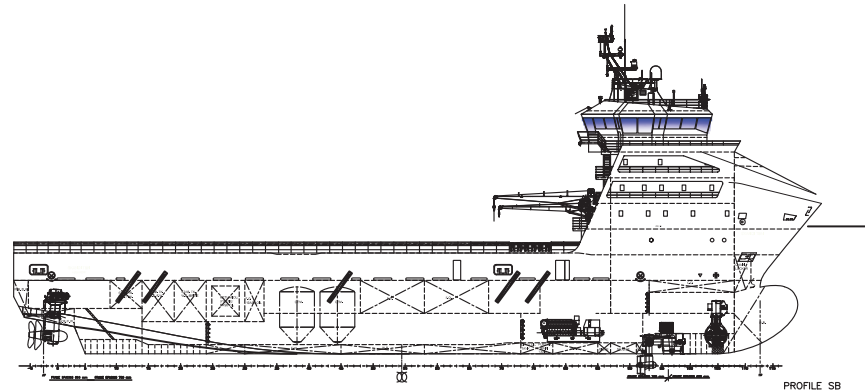
Nav/Comms Equipment

Radar(s):	2
Depth Sounder:	1
Gyro Compass:	3
Wind Speed Indicators:	2
Doppler Log:	1
Radio:	8 x VHF
Sat Com:	V-SAT

Special Equipment

Dynamic Positioning:	DP-2
Ref. Systems:	3 x MRU; 2 x DGPS 1 x Laser-based
Mud Mixers:	Yes
Tank Cleaning:	Yes
Rescue Boat:	Viking 470 GRP 1
Reefer Sockets:	10x 230V
Misc:	ERN - 99.99.91

*Approximate values assuming Ideal Conditions





*Capacities shown are for lead vessel. Actual capacities may vary slightly.
 *Capacities shown in **RED** are excluded from the total volume.
 *Capacities shown in **BLUE** are included in another Tank's Capacity.
 *Capacities shown in **GREEN** are counted for multiple Tank Capacities.

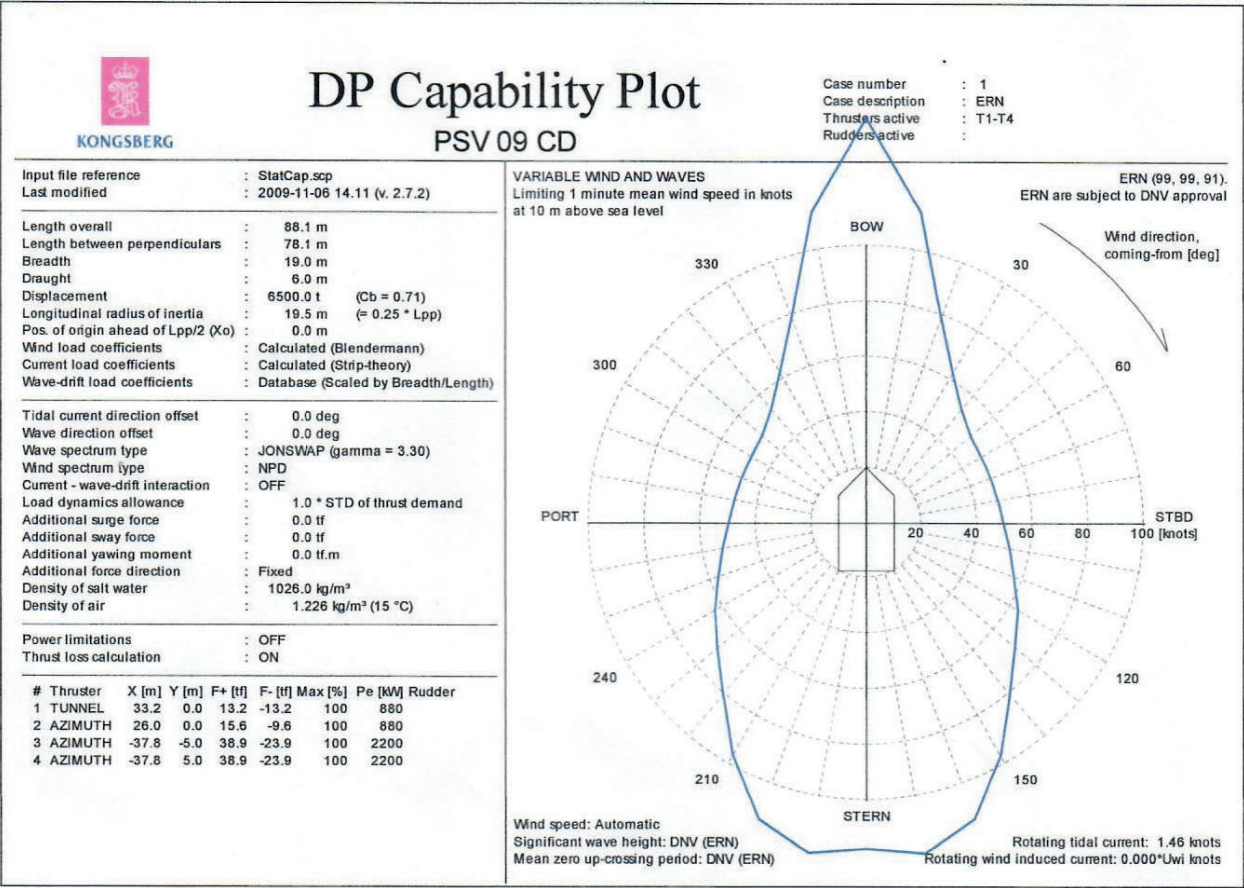


Figure 10: DP capability envelope for case 1.