

COURTNEY TIDE



D'SOUZA TIDE as shown, COURTNEY TIDE similar

FSES 5150 ANCHOR HANDLING TOWING SUPPLY VESSEL

Vessel Characteristics

Length, Overall:	194.6 ft	59.3 m
Beam:	49.2 ft	15 m
Depth:	20 ft	6.1 m
Maximum Draft:	16.4 ft	5 m
Minimum Height:	77.8 ft	23.7 m
Freeboard:	3.6 ft	1.1 m
Displacement:	2,840 lt	2,880 mt
Deadweight:	1,320 lt	1,340 mt
Clear Deck Space:	90 x 41 ft	27 x 12 m
Clear Deck Area:	3,660 ft ²	340 m ²
Deck Strength AFT:	1,540 lb/ft ²	7.5 t/m ²
Class Notations:	ABS: +A1, (E), Towing Vessel, OSV, FFV-1, +AMS, +DPS-1	

Capacities

Deck Cargo:	490 lt	500 t
Fuel Oil:	134,000 gal	510 m ³
Potable Water:	22,600 gal	85.7 m ³
Fresh Water:	71,800 gal	270 m ³
Drill/Ballast Water:	105,000 gal	400 m ³
Bulk Tanks (4 tanks):	6,600 ft ³	190 m ³
Liquid Mud (2.5 SG*):	2,390 bbl	380 m ³
*Max Structural Specific Gravity		
Oil Dispersant:	3,520 gal	13.3 m ³
Fire Fighting Foam:	3,520 gal	13.3 m ³

TIDEWATER

Find out more

tdw.com

Pg.2 Further Specifications
Pg.4 General Arrangement

Pg.5 Capacity Table
Pg.6 DP Capability Plot

NOTICE: The data contained herein is provided for convenience of reference to allow users to determine the suitability of the Company's equipment. The data may vary from the current condition of equipment which can only be determined by physical inspection. Company has exercised due diligence to insure that the data contained herein is reasonably accurate. However, Company does not warrant the accuracy or completeness of the data. In no event shall Company be liable for any damages whatsoever arising out of the use or inability to use the data contained herein.



Machinery

Main Engines (2):	CAT 3516B-HD		
Total HP:	5,150		
Propellers (2):	KH680 4 BLADE CPP		
Gears (2):	Reintjes LAF 873L 7.526:1		
Kort Nozzles:	2		
Rudders (2):	High Performance Streamline		
Primary Generators (2):	350 kw	410 v	50 hz
Driven by:	CAT C18		
Secondary Generators (2):	800 kw	410 v	50 hz
Driven by:	Main Engines		
Emergency Generators (1):	65 kw	410 v	50 hz
Driven by:	CAT 2438/1500		
Bow Thruster (2):	Kawasaki KT-72B3 TT CPP		
Driven by:	515 kW Electric Motors		
Total Thrust:	17.3 st	15.7 mt	

Performance*

Fuel Consumption Vs Speed		
Maximum:	18 m³/day (200 gph) @ 13.5 knots	
Cruising:	12.7 m³/day (140 gph) @ 10 knots	
Economical:	10.4 m³/day (110 gph) @ 8 knots	
Standby:	2.2 m³/day (24.2 gph) @ 0 knots	
Range @ 10 Knots:	9,600 nm	
Bollard Pull	68.3 st	62 mt
Transfer Rates		
Fuel Oil:	660 gpm @ 250 ft	150 m³/h @ 75 m
Fresh Water:	550 gpm @ 250 ft	120 m³/h @ 75 m
Drill/Ballast Water:	440 gpm @ 250 ft	100 m³/h @ 75 m
Bulk:	28 cfm @ 190 ft	47.5 m³/h @ 57 m
Liquid Mud:	310 gpm @ 280 ft	70 m³/h @ 85 m

Tow/Anchor Handling

Winch:	Plimsoll (6m/min)
Model:	Electro-Hydraulic w/200tBrake
Line Pull:	150 mt
Tow/AH Wire:	1000 m / 1000 m of 56 mm
Pennant Reels (1):	1000 m of 56 mm
Shark Jaw:	PLIMSOLL 200 MT
Tow Pins:	PLIMSOLL 200 MT (1 SET)
Stern Roller:	4.4M X 1.6M; 200 mt SWL

Nav/Comms Equipment

Radar(s):	2
Depth Sounder:	1
Cyro Compass:	2
Wind Sseed Indicators:	2
Doppler Log:	1
Radio:	2 x VHF; 1 x SSB
Sat Com:	1 X INMARSAT-C

Accommodations

No. of Berths:	42
Cabins:	4x1-man, 3x2-man & 8x4-man
Certified to Carry:	42
Galley seating:	30
Hospital:	Yes

Deck Equipment

Anchors (2):	2877 lbs HHP STOCKLESS
Anchor Chain:	220 m of 36 mm chain per side
Windlass:	Plimsoll (6.1T@10M/MIN)
Crane (1):	3 t @ 91 m
Capstans (2):	5 t Plimsoll (15m/min)
Tugger (2):	10 t PLIMSOLL (15M/MIN)

*Approximate values assuming Ideal Conditions



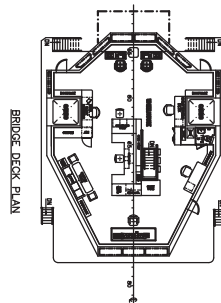
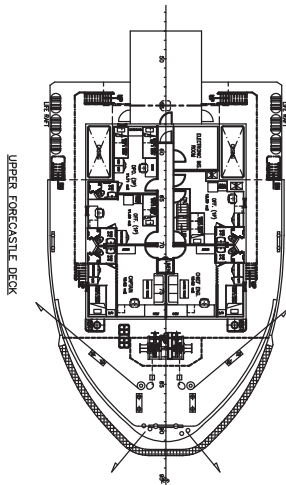
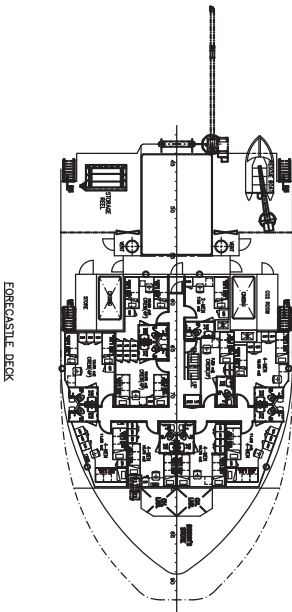
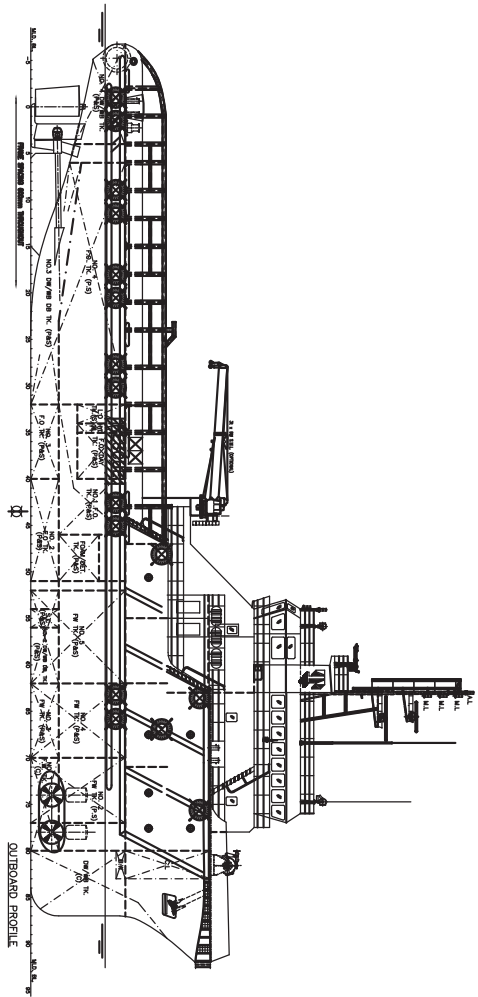
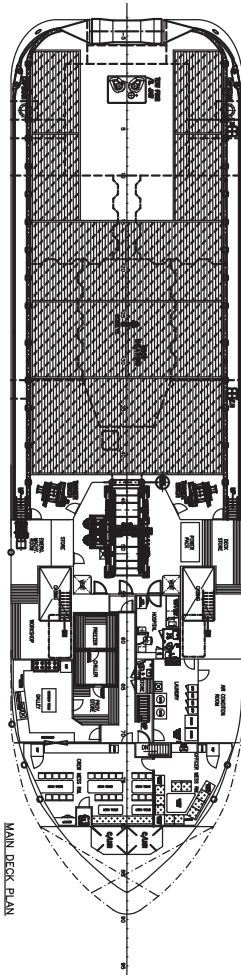
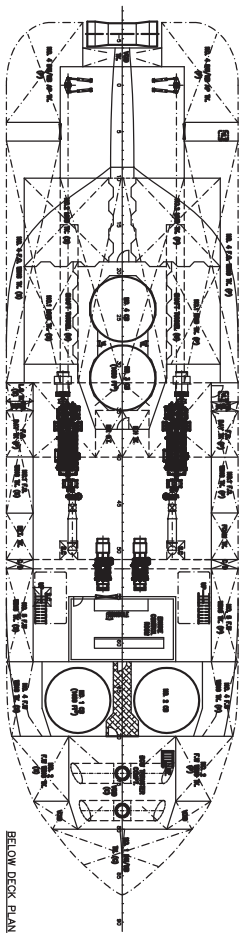
Registration

Flag: VANUATU	Home Port: PORT VILA	
Hull Number: 53	IMO N ^o : 9582192	
Year Built: 2010	Call Sign: YJVV7	
Builder:	FUJIAN SOUTHEAST SHIPYARD	
Tonnage (ITC):	1678 GT	503 NT

Special Equipment

Fire Fighting:	FiFi-1
Dynamic Positioning:	DP-1
Ref. Systems:	1 x MRU; 2 x DGPS
Water Maker:	5T/DAY
Mud Circulation System:	Yes
Rescue Zone:	Yes
Rescue Boat:	6 Man SOLAS Approved
Reefer Sockets:	2 x 415V 63A; 2 x 220V 32A
Misc:	MSD - 50 PERSONS

*Approximate values assuming Ideal Conditions





Tank Table														
Tank	Contents	Volume m ³	Base Oil	Fuel Oil	Dry Bulk	DW/WB	Potable Water	Fresh Water	Brine	Liquid Mud	Methanol	Lube Oil	Foam	Oil Disp.
No 1 Tank (C)	DW/WB	137.5				137.5								
No 2 Tank DB (P)	DW/WB	58.8				58.8								
No 2 Tank DB (S)	DW/WB	56.6				56.6								
No 3 Tank DB (P)	DW/WB	40.4				40.4								
No 3 Tank DB (S)	DW/WB	40.4				40.4								
No 4 Tank (P)	DW/WB	31.4				31.4								
No 4 Tank (S)	DW/WB	31.4				31.4								
No 1 Tank (C)	FW	55.3						55.3						
No 2 Wing (P)	Ships FW	42.8					42.8							
No 2 Wing (S)	Ships FW	42.8					42.8							
No 3 Tank DB (P)	FW	18.7						18.7						
No 3 Tank DB (S)	FW	18.7						18.7						
No 4 Wing (P)	FW	40.8						40.8						
No 4 Wing (S)	FW	40.8						40.8						
No 5 Wing (P)	FW	47.8						47.8						
No 5 Wing (S)	FW	49.7						49.7						
Day Tank (P)	FO	15.9		15.9										
Day Tank (S)	FO	15.9		15.9										
No 1 Wing (P)	FO	33.8		33.8										
No 1 Wing (S)	FO	36.3		36.3										
No 2 DB Tk (P)	FO	66.5		66.5										
No 2 DB Tk (S)	FO	66.5		66.5										
No 3 DB Tk (P)	FO	33.0		33.0										
No 3 DB Tk (S)	FO	33.0		33.0										
No 4 Wing (P)	FO	119.6		119.6										
No 4 Wing (S)	FO	119.6		119.6										
Cem Tk 1	Dry Bulk	46.7			46.7									
Cem Tk 2	Dry Bulk	46.7			46.7									
Cem Tk 3	Dry Bulk	46.7			46.7									
Cem Tk 4	Dry Bulk	46.7			46.7									
No 1 Tank (P)	LM	81.4								81.4				
No 1 Tank (S)	LM	81.4								81.4				
No 2 Tank (P)	LM	108.7								108.7				
No 2 Tank (S)	LM	108.7								108.7				
Foam Tank (P)	Foam	13.3											13.3	
Detergent Tk (S)	Dispersant	13.3												13.3
Lube Oil (S)	LO	6.4										6.4		
Total Volume [m ³]			0.0	539.9	186.9	396.4	85.7	271.6	0.0	380.2	0.0	6.4	13.3	13.3
Spec Sheet Total Volume [m ³]			0.0	508.2	186.9	396.4	85.7	271.6	0.0	380.2	0.0	6.4	13.3	13.3

*Capacities shown are for lead vessel. Actual capacities may vary slightly.

*Capacities shown in **RED** are excluded from the total volume.

*Capacities shown in **BLUE** are included in another Tank's Capacity.

*Capacities shown in **GREEN** are counted for multiple Tank Capacities.



KONGSBERG

DP Capability Plot
FUJIAN DN59M-83

Case number : 1
Case description : All Thrusters
Thrusters active : T1-T3
Rudders active : R1-R2

Table with 2 columns: Parameter and Value. Includes input file reference, last modified, vessel dimensions, wind load coefficients, tidal current direction offset, power limitations, and thrust loss calculation.

Table with 9 columns: #, Thruster, X [m], Y [m], F+ [tf], F- [tf], Max [%], Pe [kW], Rudder. Lists thruster specifications for TUNNEL, PROP_AS, and BECKER.

