



BOUTROS TIDE as shown, CHAYARI TIDE similar

## GMGSHI 5150 DP2 ANCHOR HANDLING TOWING SUPPLY VESSEL

### Vessel Characteristics

Length, Overall:	192.6 ft	58.7 m
Beam:	47.9 ft	14.6 m
Depth:	18 ft	5.5 m
Maximum Draft:	15.8 ft	4.8 m
Minimum Height:	70.1 ft	21.4 m
Freeboard:	2.6 ft	0.8 m
Displacement:	2,790 lt	2,840 mt
Deadweight:	1,270 lt	1,290 mt
Clear Deck Space:	96 x 40 ft	29 x 12 m
Clear Deck Area:	3,820 ft <sup>2</sup>	350 m <sup>2</sup>
Deck Strength AFT:	1,430 lb/ft <sup>2</sup>	7 t/m <sup>2</sup>
Class Notations:	ABS: +A1, (E), +AMS, +DPS-2, FFV-1, OSV, AH, TOWING VESSEL, UWILD	

### Capacities

Deck Cargo:	540 lt	550 t
Fuel Oil:	194,000 gal	730 m <sup>3</sup>
Potable Water:	66,700 gal	250 m <sup>3</sup>
Drill/Ballast Water:	97,500 gal	370 m <sup>3</sup>
Bulk Tanks (4 tanks):	6,000 ft <sup>3</sup>	170 m <sup>3</sup>
Oil Dispersant:	3,570 gal	13.5 m <sup>3</sup>
Fire Fighting Foam:	3,570 gal	13.5 m <sup>3</sup>

## TIDEWATER

Find out more

[tdw.com](http://tdw.com)

Pg.2 Further Specifications  
Pg.4 General Arrangement

Pg.5 Capacity Table  
Pg.6 DP Capability Plot



Machinery

Main Engines (2):	CAT 3516 B-HD		
Total HP:	5,150		
Propellers (2):	CPP, 4 BLADE		
Gears (2):	REINTJES LAF 873PK41, 7,562:1		
Kort Nozzles:	2		
Rudders (2):	STREAMLINE		
Primary Generators (3):	450 kw	410 v	50 hz
Driven by:	CAT C18		
Secondary Generators (2):	1000 kw	410 v	50 hz
Driven by:	Main Engines		
Emergency Generators (1):	65 kw	410 v	50 hz
Bow Thruster (2):	Kawasaki, KT-88B3 TT CPP		
Driven by:	650kW Electric Motor		
Total Thrust:	21.8 st	19.8 mt	
Stern Thruster (1):	Kawasaki, KT-88B3 TT CPP		
Driven by:	650kW Electric Motor		
Total Thrust:	11 st	10 mt	

Performance\*

Fuel Consumption Vs Speed		
Maximum:	25 m³/day (280 gph) @ 13.5 knots	
Cruising:	18.9 m³/day (210 gph) @ 12.4 knots	
Economical:	13.2 m³/day (150 gph) @ 9.6 knots	
Standby:	2.2 m³/day (24.2 gph) @ 0 knots	
Range @ 12.4 Knots:	7,580 nm	
Bollard Pull	68.3 st	62 mt
Transfer Rates		
Fuel Oil:	620 gpm @ 250 ft	140 m³/h @ 75 m
Potable Water:	440 gpm @ 250 ft	100 m³/h @ 75 m
Drill/Ballast Water:	440 gpm @ 250 ft	100 m³/h @ 75 m
Bulk:	25 cfm @ 180 ft	42.4 m³/h @ 56 m
Liquid Mud:	310 gpm @ 250 ft	70 m³/h @ 75 m

Tow/Anchor Handling

Winch:	Hydraulic Waterfall Double-Drum (200T Brake)
Model:	MacGregor Plimsoll
Line Pull:	150 mt
Tow/AH Wire:	1000 m / 1000 m of 56 mm
Pennant Reels (1):	1000 m of 56 mm
Shark Jaw:	1 KARM FORK @ 200MT SWL
Tow Pins:	2 @ 200MT SWL
Stern Roller:	5.0M X 1.6M DIA; 200 mt SWL

Nav/Comms Equipment

Radar(s):	2
Depth Sounder:	1
Cyro Compass:	3
Wind Seed Indicators:	3
Doppler Log:	1
Radio:	3 x VHF
Sat Com:	1XINMARSAT-C

Accommodations

No. of Berths:	42
Cabins:	2x1-man, 4x2-man & 8x4-man
Certified to Carry:	42
Galley seating:	27
Hospital:	Yes

Deck Equipment

Anchors (2):	1305kg High Holding Power
Anchor Chain:	220 m of 36 mm chain per side
Windlass:	MacGregor 9T@12m/min
Capstans (2):	5 t Electro-Hydraulic, 15m/min
Tugger (2):	10 t ELECTRO-HYDRAULIC, 15M/MIN

\*Approximate values assuming Ideal Conditions



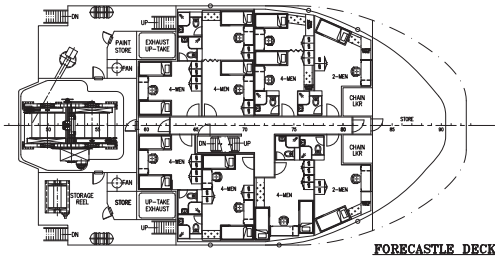
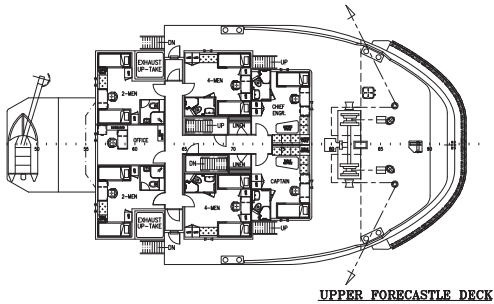
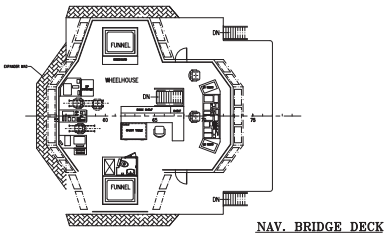
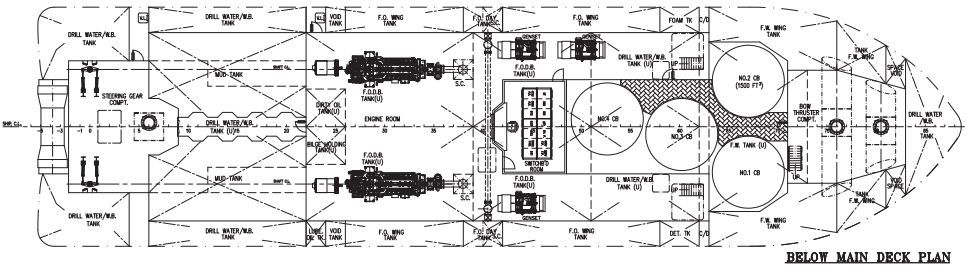
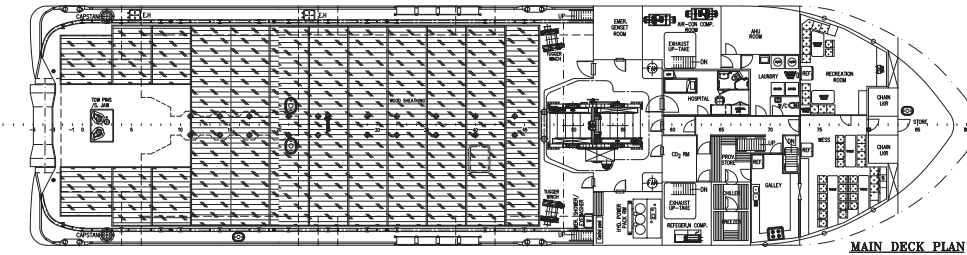
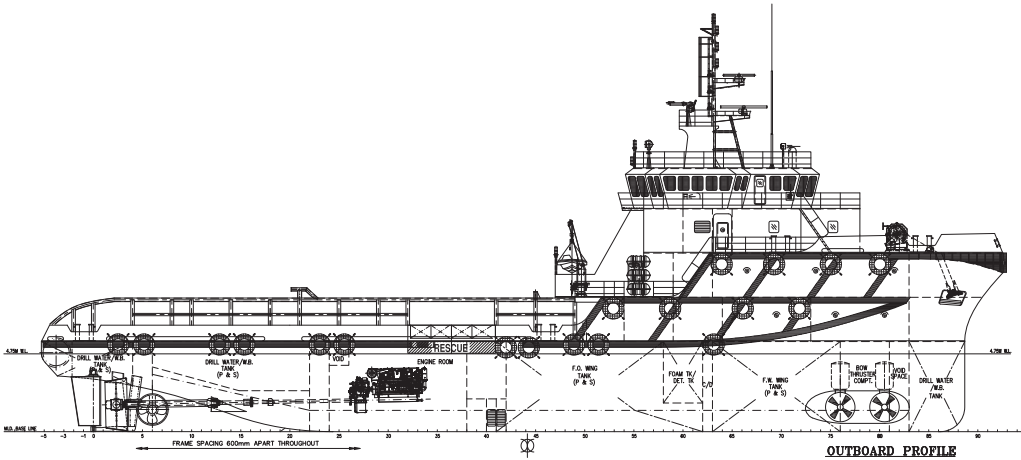
Registration

Flag: VANUATU	Home Port: PORT VILA	
Hull Number: 899	IMO N <sup>o</sup> : 9589061	
Year Built: 2011	Call Sign: YJQX9	
Builder:	GUANGXIN SHIPBUILDING	
Tonnage (ITC):	1476 GT	442 NT

Special Equipment

Fire Fighting:	FiFi-1
Dynamic Positioning:	DP-2
Ref. Systems:	2 x MRU; 2 x DGPS 1 x Microwave-based
Water Maker:	5T/DAY
Mud Circulation System:	Yes
Rescue Zone:	Yes
Rescue Boat:	6-Man RB
Aux. Rescue Boat:	15-MAN FRC
Reefer Sockets:	6x 415V 32A
Misc:	MSD - 42 Persons

\*Approximate values assuming Ideal Conditions





\*Capacities shown are for lead vessel. Actual capacities may vary slightly.  
 \*Capacities shown in **RED** are excluded from the total volume.  
 \*Capacities shown in **BLUE** are included in another Tank's Capacity.  
 \*Capacities shown in **GREEN** are counted for multiple Tank Capacities.

\*Capacities shown in **GREEN** are counted for multiple Tank Capacities.



KONGSBERG

DP Capability Plot

GMG0888/0889/0899/08100

Input file reference : foot\_3229.scp

Last modified : 2009-09-06 07.39 (v. 2.6.2)

Length overall : 58.7 m

Length between perpendiculars : 53.2 m

Breadth : 14.6 m

Draught : 4.8 m

Displacement : 3000.0 t (Cb = 0.78)

Longitudinal radius of inertia : 13.3 m (= 0.25 \* Lpp)

Pos. of origin ahead of Lpp/2 (Xo) : 0.0 m

Wind load coefficients : Calculated (Blendermann)

Current load coefficients : Calculated (Strip-theory)

Wave-drift load coefficients : Database (Scaled by Breadth/Length)

Tidal current direction offset : 0.0 deg

Wave direction offset : 0.0 deg

Wave spectrum type : JONSWAP (gamma = 3.30)

Wind spectrum type : NPD

Current - wave-drift interaction : OFF

Load dynamics allowance : 1.0 \* STD of thrust demand

Additional surge force : 0.0 tf

Additional sway force : 0.0 tf

Additional yawing moment : 0.0 tf.m

Additional force direction : Fixed

Density of salt water : 1026.0 kg/m³

Density of air : 1.226 kg/m³ (15 °C)

Power limitations : OFF

Thrust loss calculation : ON

#	Thruster	X [m]	Y [m]	F+ [tf]	F- [tf]	Max [%]	Pe [kW]	Rudder
1	TUNNEL	22.5	0.0	10.1	-10.1	100	675	
2	TUNNEL	19.2	0.0	10.1	-10.1	100	675	
3	TUNNEL	-23.4	0.0	10.1	-10.1	100	675	
4	PROP_AS	-26.5	3.5	33.5	-23.4	100	1100	CUSTOM
5	PROP_AS	-26.5	-3.5	33.5	-23.4	100	1100	CUSTOM

Limiting 1 minute mean wind speed in knots

at 10 m above sea level

