



AKER 100T ANCHOR HANDLING TOWING SUPPLY VESSEL

Vessel Characteristics

Length, Overall:	213.3 ft	65 m
Beam:	52.5 ft	16 m
Depth:	23 ft	7 m
Maximum Draft:	19.7 ft	6 m
Minimum Height:	75.5 ft	23 m
Freeboard:	3.3 ft	1 m
Displacement:	4,130 lt	4,200 mt
Deadweight:	2,520 lt	2,560 mt
Clear Deck Space:	115 x 46 ft	35 x 14 m
Clear Deck Area:	5,110 ft ²	470 m ²
Deck Strength AFT:	1,020 lb/ft ²	5 t/m ²
Class Notations:	ABS: +A1, FFV-1, (E), OSV AH, +AMS, +DPS-2	

Capacities

Deck Cargo:	1,200 lt	1,220 t
Fuel Oil:	174,000 gal	660 m ³
Potable Water:	73,800 gal	280 m ³
Fresh Water:	38,300 gal	150 m ³
Drill/Ballast Water:	226,000 gal	850 m ³
Bulk Tanks (4 tanks):	5,980 ft ³	170 m ³
Liquid Mud (2.5 SG*):	3,950 bbl	630 m ³
*Max Structural Specific Gravity		

TIDEWATER

Find out more

tdw.com

Pg.2 Further Specifications

Pg.5 Capacity Table

Pg.4 General Arrangement

Pg.6 DP Capability Plot

Machinery

Main Engines (2):	Mak 9M 25		
Total HP:	7,960		
Propellers (2):	RRM-ULSTEIN 79P 1/4 3000N		
Gears (2):	KAMENWA 750 AGHC -S-B-KP50ND		
Kort Nozzles:	2		
Rudders (2):	RRM-ULSTEIN - High Lift Flap		
Primary Generators (2):	260 kw	440 v	60 hz
Driven by:	Scania D1-12-452		
Secondary Generators (2):	1,600 kw	440 v	60 hz
Driven by:	Main Engines		
Emergency Generators (1):	75 kw	440 v	60 hz
Driven by:	John Deere 4045 TFM50		
Bow Thruster (2):	RRM - KAMEWA TT 1650 CP		
Driven by:	790 HP Electric Motor		
Total Thrust:	19.8 st	18 mt	
Stern Thruster (1):	RRM - KAMEWA TT 1650 CP		
Driven by:	790 HP Electric Motor		
Total Thrust:	9.9 st	9 mt	

Performance*

Fuel Consumption Vs Speed		
Maximum:	30.9 m³/day (340 gph) @ 14 knots	
Cruising:	20.9 m³/day (230 gph) @ 12 knots	
Economical:	10.9 m³/day (120 gph) @ 8 knots	
Standby:	0.9 m³/day (10 gph) @ 0 knots	
Range @ 12 Knots:	12,400 nm	
Bollard Pull	120 st	110 mt
Transfer Rates		
Fuel Oil:	530 gpm @ 230 ft	120 m³/h @ 70 m
Fresh Water:	530 gpm @ 230 ft	120 m³/h @ 70 m
Drill/Ballast Water:	350 gpm @ 230 ft	80 m³/h @ 70 m
Bulk:	25 cfm @ 190 ft	42.4 m³/h @ 57 m
Liquid Mud:	330 gpm @ 500 ft	75 m³/h @ 150 m
Brine:	330 gpm @ 370 ft	75 m³/h @ 110 m

Tow/Anchor Handling

Winch:	RRM - Brattvaag
Model:	SL225W/BSL225W
Line Pull:	220 mt
Tow/AH Wire:	1,400 m / 1,400 m of 56 mm
Pennant Reels (1):	1,400 m of 56 mm
Shark Jaw:	1 SET KARMOY 300 MT KARM FORKS
Tow Pins:	1 SET KARMOY 240 MT
Chain Lockers (2):	2,040 m of 76mm chain
Chain Handler:	2 X 3 IN.
Stern Roller:	RRM - 2.4 X 1.5 M DIA.; 300 mt SWL

Nav/Comms Equipment

Radar(s):	2
Depth Sounder:	1
Cyro Compass:	3
Wind Seed Indicators:	3
Doppler Log:	1
Radio:	4 x VHF; 1 x SSB

Accommodations

No. of Berths:	24
Cabins:	5x1-man, 6x2-man, 1x3-man & 1x4-man
Certified to Carry:	24
Galley seating:	16
Hospital:	Yes

Deck Equipment

Anchors (2):	4630 LBS
Anchor Chain:	220 m of 38 mm chain per side
Windlass:	RRM - Brattvaag BMG 41036
Crane (1):	2 t @ 13 m
Capstans (2):	6 t RRM - BRATTVAAG CM 1206
Tugger (1):	6 t RRM - BRATTVAAG AKM 1206

*Approximate values assuming Ideal Conditions



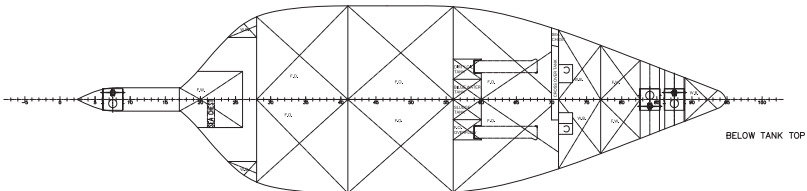
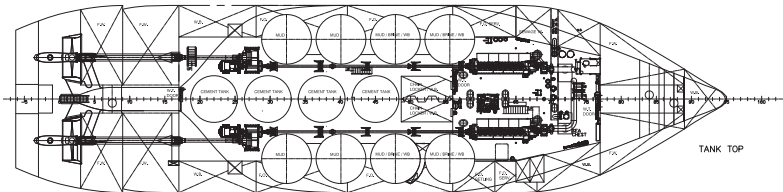
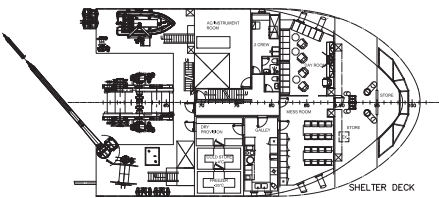
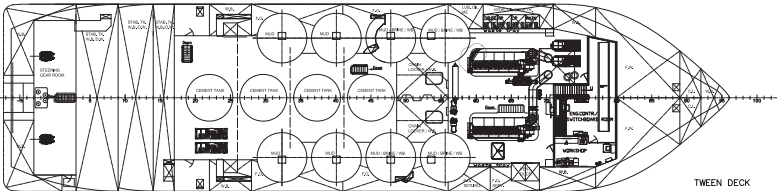
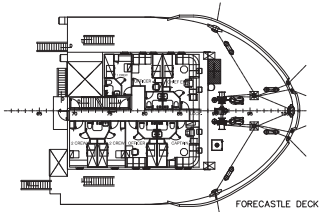
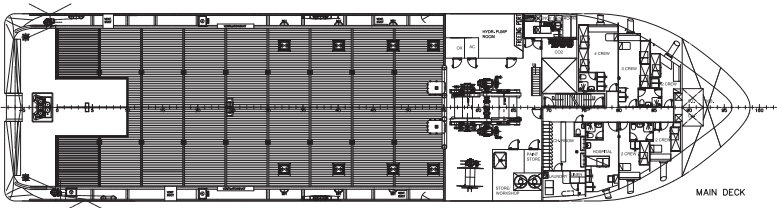
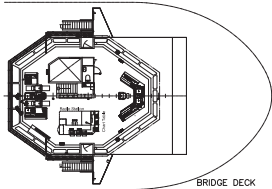
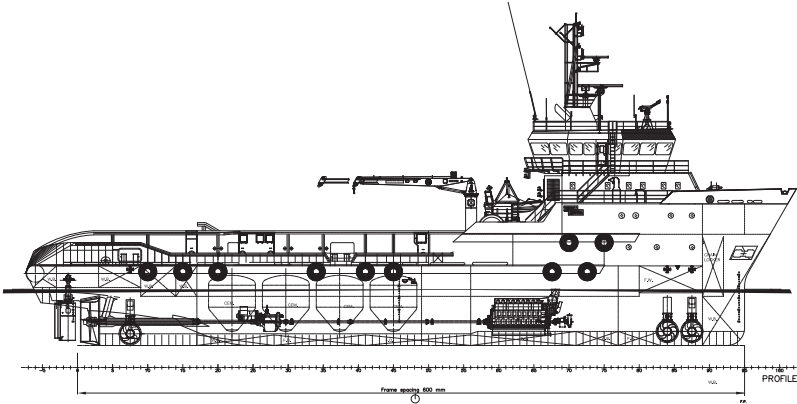
Registration

Flag: VANUATU	Home Port: PORT VILA	
Hull Number: 142	IMO N ^o : 9303467	
Year Built: 2004	Call Sign: YJUN2	
Builder:	SOVIKNES VERFT	
Tonnage (ITC):	1857 GT	557 NT

Special Equipment

Fire Fighting:	FiFi-1
Dynamic Positioning:	DP-2
Ref. Systems:	3 x MRU; 2 x DGPS 1 x Microwave-based; 1 x Laser-based
Mud Circulation System:	Yes
Rescue Boat:	Yes
Reefer Sockets:	4x 450V 32A

*Approximate values assuming Ideal Conditions





Tank	Contents	Volume m ³	Base Oil	Fuel Oil	Dry Bulk	DW/WB	Potable Water	Fresh Water	Brine	Liquid Mud	Methanol	Lube Oil	Foam	Oil Disp.
Forepeak Tk	DW/WB	109.8				109.8								
DB/Wing Tk 2 P	DW/WB	60.0				60.0								
DB/Wing Tk 2 S	DW/WB	74.7				74.7								
Rig Chain Locker P	DW/WB/CL	63.7				63.7								
Rig Chain Locker S	DW/WB/CL	63.2				63.2								
Wing Tk 6 P	DW/WB	57.0				57.0								
Wing Tk 6 S	DW/WB	57.0				57.0								
Tank 1 P	LM/DW/WB	78.8				78.8				78.8				
Tank 1 S	LM/DW/WB	78.8				78.8				78.8				
Tank 2 P	LM/DW/WB	76.5				76.5				76.5				
Tank 2 S	LM/DW/WB	78.8				78.8				78.8				
Stability Tk 1	DW/WB	72.5				72.5								
Stability Tk 2	DW/WB	122.2				122.2								
Stability Tk 2	DW/WB	102.8				102.8								
Aftpeak Tk P	DW/WB	37.0				37.0								
Aftpeak Tk S	DW/WB	33.9				33.9								
FW DB/Wing 1 P	Ship's FW	141.0					141.0							
FW DB/Wing 1 S	Ship's FW	138.4					138.4							
FW DB Tank 6 C	FW	14.8						14.8						
FW Wing Tk 7 P	FW	43.0						43.0						
FW Wing Tk 7 S	FW	40.9						40.9						
FW Wing Tk 8 P	FW	23.2						23.2						
FW Wing Tk 8 S	FW	23.2						23.2						
FO DB Tank 3 P	FO	54.2		54.2										
FO DB Tank 3 S	FO	56.7		56.7										
FO DB/Wing Tk 4 P	FO	155.4		155.4										
FO DB/Wing Tk 4 S	FO	151.5		151.5										
FO DB/Wing Tk 5 P	FO	120.7		120.7										
FO DB/Wing Tk 5 S	FO	120.7		120.7										
FO Service Tk S	FO	38.8		38.8										
FO Service Tk S	FO	33.5		33.5										
FO Settling Tk	FO	35.1		35.1										
FO Overflow Tk	FO	3.7		3.7										
Tank 3 P	LM	78.8								78.8				
Tank 3 S	LM	78.8								78.8				
Tank 4 P	LM	78.8								78.8				
Tank 4 S	LM	78.8								78.8				
Lube Oil M.Gear	LO	3.7										3.7		
Lube Oil Aux. Eng	LO	3.7										3.7		
Lube Oil Main Eng	LO	12.1										12.1		
Dry Bulk 1	Dry Bulk	42.3			42.3									
Dry Bulk 2	Dry Bulk	42.3			42.3									
Dry Bulk 3	Dry Bulk	42.3			42.3									
Dry Bulk 4	Dry Bulk	42.3			42.3									
Total Volume [m ³]			0.0	770.3	169.2	1,166.7	279.4	145.1	0.0	628.1	0.0	19.5	0.0	0.0
Spec Sheet Total Volume [m ³]			0.0	659.2	169.2	853.8	279.4	145.1	0.0	628.1	0.0	19.5	0.0	0.0

*Capacities shown are for lead vessel. Actual capacities may vary slightly.

*Capacities shown in **RED** are excluded from the total volume.

*Capacities shown in **BLUE** are included in another Tank's Capacity.

*Capacities shown in **GREEN** are counted for multiple Tank Capacities.



Ship: **Platt Tide**
Run : **All Online, 100% Available Thrust**

