

# GAMMAGE TIDE



HART TIDE as shown, GAMMAGE TIDE similar

## MMC 887 PLATFORM SUPPLY VESSEL

### Vessel Characteristics

|                    |   |                    |
|--------------------|---|--------------------|
| Length, Overall:   | 285.8 ft                                    | 87.1 m             |
| Beam:              | 61.7 ft                                     | 18.8 m             |
| Depth:             | 24.3 ft                                     | 7.4 m              |
| Maximum Draft:     | 20 ft                                       | 6.1 m              |
| Light Draft:       | 7.6 ft                                      | 2.3 m              |
| Minimum Height:    | 91.2 ft                                     | 27.8 m             |
| Freeboard:         | 4.6 ft                                      | 1.4 m              |
| Displacement:      | 7,600 lt                                    | 7,720 mt           |
| Deadweight:        | 5,060 lt                                    | 5,140 mt           |
| Clear Deck Space:  | 196 x 52 ft                                 | 60 x 16 m          |
| Clear Deck Area:   | 9,980 ft <sup>2</sup>                       | 930 m <sup>2</sup> |
| Deck Strength AFT: | 1,020 lb/ft <sup>2</sup>                    | 5 t/m <sup>2</sup> |
| Class Notations:   | ABS: +A1, (E), +AMS, +DPS-2, OSV, RW, UWILD |                    |

### Capacities

|   |                        |                      |
|---|------------------------|----------------------|
| Deck Cargo:                                     | 2,800 lt               | 2,840 t              |
| Fuel Oil:                                       | 240,000 gal            | 910 m <sup>3</sup>   |
| Potable Water:                                  | 44,300 gal             | 170 m <sup>3</sup>   |
| Fresh Water:                                    | 530,000 gal            | 2,010 m <sup>3</sup> |
| Drill/Ballast Water:                            | 86,700 gal             | 330 m <sup>3</sup>   |
| Bulk Tanks (5 tanks):                           | 14,700 ft <sup>3</sup> | 420 m <sup>3</sup>   |
| Liquid Mud (2.4 SG*):                           | 9,720 bbl              | 1,540 m <sup>3</sup> |
| <small>*Max Structural Specific Gravity</small> |                        |                      |
| Methanol:                                       | 2,700 bbl              | 430 m <sup>3</sup>   |

## TIDEWATER

Find out more

[tdw.com](http://tdw.com)

Pg.2 Further Specifications

Pg.4 Capacity Table

Pg.3 General Arrangement

Pg.5 DP Capability Plot

# GAMMAGE TIDE

## Further specifications



### Machinery

|                                  |                                |       |       |
|----------------------------------|--------------------------------|-------|-------|
| <b>Diesel Electric Vessel</b>    |                                |       |       |
| <i>Propulsive/Total HP:</i>      | 5,360 / 10,200                 |       |       |
| <b>Z-Drives:</b>                 | Yes                            |       |       |
| <b>Propellers (2):</b>           | 4-Blade FP Rolls-Royce         |       |       |
| <b>Kort Nozzles:</b>             | 2                              |       |       |
| <b>Primary Generators (4):</b>   | 1,820 kw                       | 480 v | 60 hz |
| <i>Driven by:</i>                | Cummins QSK60-D(M)             |       |       |
| <b>Emergency Generators (1):</b> | 150 kw                         | 480 v | 60 hz |
| <i>Driven by:</i>                | Cummins 6CTA8.3-D(M)           |       |       |
| <b>Bow Thruster (2):</b>         | 1220 HP CPP TT, 1073 HP CPP DD |       |       |
| <i>Driven by:</i>                | ELECTRIC MOTOR DRIVEN          |       |       |
| <i>Total Thrust:</i>             | 28.7 st                        | 26 mt |       |

### Deck Equipment

|                      |                                   |
|----------------------|-----------------------------------|
| <b>Anchors (2):</b>  | 5456 lbs HHP                      |
| <b>Anchor Chain:</b> | 250 m of 50 mm chain per side     |
| <b>Windlass:</b>     | Electric, 65/32 kn @10/20 m/m     |
| <b>Crane (1):</b>    | 2 t @ 10.1 m                      |
| <b>Capstans (2):</b> | 7.5 t Electric, 328 ft. of .5 in. |
| <b>Tugger (2):</b>   | 10 t ELECTRIC, PLIMSOLL           |

### Accommodations

|                            |                             |
|----------------------------|-----------------------------|
| <b>No. of Berths:</b>      | 50                          |
| <b>Cabins:</b>             | 16x1-man, 9x2-man & 4x4-man |
| <b>Certified to Carry:</b> | 50                          |
| <b>Galley seating:</b>     | 30                          |
| <b>Hospital:</b>           | Yes                         |

### Registration

|                          |                                   |
|--------------------------|-----------------------------------|
| <b>Flag:</b> LIBERIA     | <b>Home Port:</b> MONROVIA        |
| <b>Hull Number:</b> 6194 | <b>IMO N<sup>o</sup>:</b> 9533581 |
| <b>Year Built:</b> 2011  | <b>Call Sign:</b> 5LRQ2           |
| <b>Builder:</b>          | FUJIAN MAWEI                      |
| <b>Tonnage (ITC):</b>    | 3790 GT / 1137 NT                 |

### Performance\*

|                                  |   |                               |
|----------------------------------|---|-------------------------------|
| <b>Fuel Consumption Vs Speed</b> |   |                               |
| <i>Maximum:</i>                  | 28 m <sup>3</sup> /day (310 gph) @ 14 knots   |                               |
| <i>Cruising:</i>                 | 12.5 m <sup>3</sup> /day (140 gph) @ 10 knots |                               |
| <i>Economical:</i>               | 10 m <sup>3</sup> /day (110 gph) @ 8 knots    |                               |
| <i>Standby:</i>                  | 2.3 m <sup>3</sup> /day (25 gph) @ 0 knots    |                               |
| <b>Range @ 10 Knots:</b>         | 17,400 nm                                     |                               |
| <b>Transfer Rates</b>            |   |                               |
| <i>Fuel Oil:</i>                 | 660 gpm @ 300 ft                              | 150 m <sup>3</sup> /h @ 92 m  |
| <i>Fresh Water:</i>              | 660 gpm @ 300 ft                              | 150 m <sup>3</sup> /h @ 92 m  |
| <i>Drill/Ballast Water:</i>      | 660 gpm @ 300 ft                              | 150 m <sup>3</sup> /h @ 92 m  |
| <i>Bulk:</i>                     | 49 cfm @ 180 ft                               | 83.2 m <sup>3</sup> /h @ 56 m |
| <i>Liquid Mud:</i>               | 660 gpm @ 190 ft                              | 150 m <sup>3</sup> /h @ 58 m  |
| <i>Methanol:</i>                 | 330 gpm @ 300 ft                              | 75 m <sup>3</sup> /h @ 92 m   |

### Nav/Comms Equipment

|                               |                  |
|-------------------------------|------------------|
| <b>Radar(s):</b>              | 2                |
| <b>Depth Sounder:</b>         | 1                |
| <b>Gyro Compass:</b>          | 3                |
| <b>Wind Speed Indicators:</b> | 3                |
| <b>Doppler Log:</b>           | 1                |
| <b>Radio:</b>                 | 3 x VHF; 1 x SSB |
| <b>Sat Com:</b>               | STARLINK         |

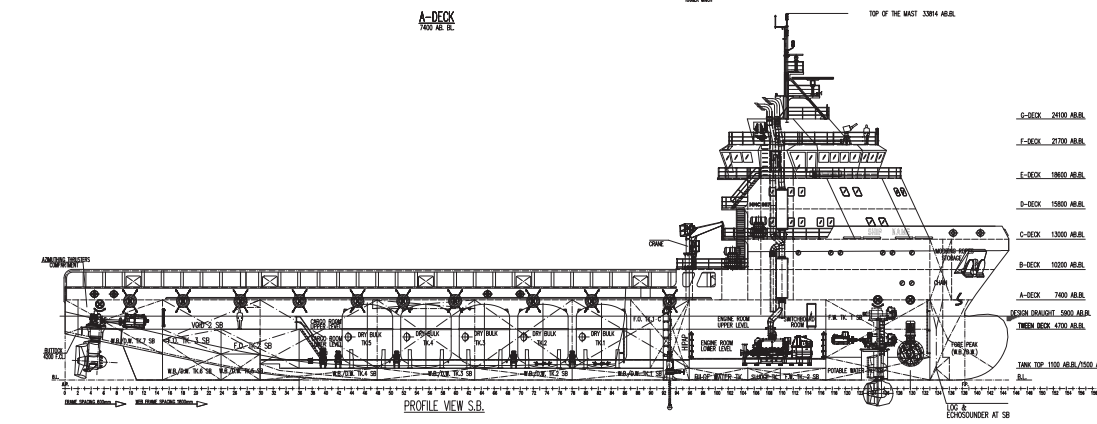
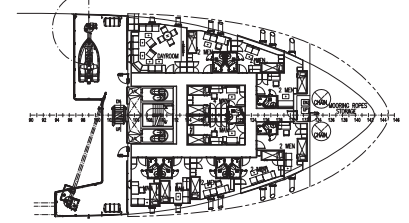
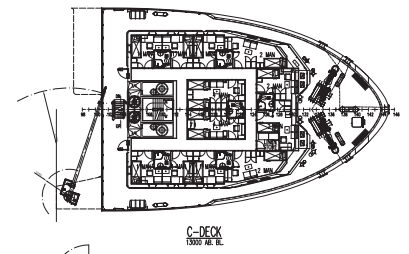
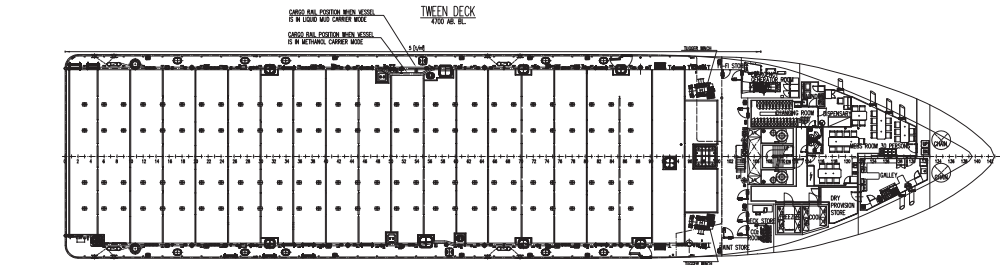
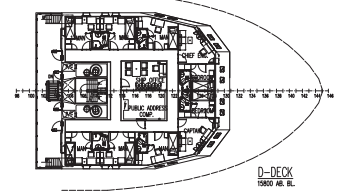
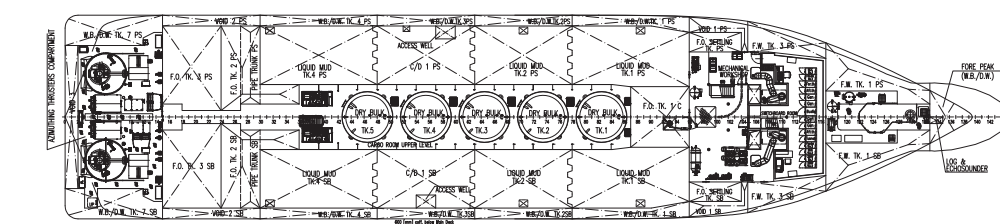
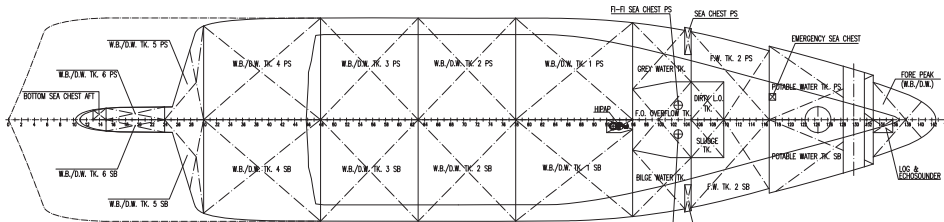
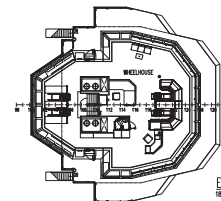
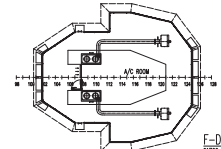
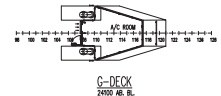
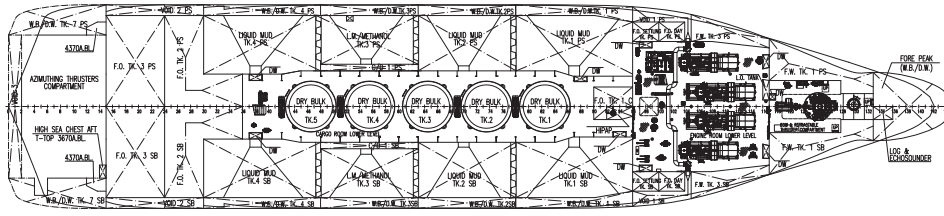
### Special Equipment

|  |   |
|--|---|
| <b>Firefighting:</b>                           | FiFi-1  |
| <b>Dynamic Positioning:</b>                    | DP-2  |
| <b>Ref. Systems:</b>                           | 2 x MRU; 2 x DGPS<br>1 x Microwave-based; 1 x Laser-based |
| <b>Mud Circulation System/<br/>Mud Mixers:</b> | Yes/Yes   |
| <b>Tank Cleaning:</b>                          | Yes   |
| <b>Rescue Boat:</b>                            | Solas Approved  |
| <b>Reefer Sockets:</b>                         | 4x 480V 32A   |
| <b>Misc:</b>                                   | SEWAGE TREATMENT - 60 Persons                             |

\*Approximate values assuming Ideal Conditions

# GAMMAGE TIDE

## General Arrangement (Current configuration may vary.)



- C-DECK 2400 AB.L.
- F-DECK 2100 AB.L.
- E-DECK 1800 AB.L.
- D-DECK 1600 AB.L.
- C-DECK 1500 AB.L.
- B-DECK 10200 AB.L.
- A-DECK 7000 AB.L.
- DECK BRIDGE 5800 AB.L.
- THIRTEEN DECK 1000 AB.L.
- TANK TOP 1100 AB.L./1500 AB.L.



| Tank Table                                |          |                       |          |          |          |         |               |             |       |            |          |          |      |           |
|---|----------|-----------------------|----------|----------|----------|---------|---------------|-------------|-------|------------|----------|----------|------|-----------|
| Tank                                      | Contents | Volume m <sup>3</sup> | Base Oil | Fuel Oil | Dry Bulk | DW/WB   | Potable Water | Fresh Water | Brine | Liquid Mud | Methanol | Lube Oil | Foam | Oil Disp. |
| Fore Peak                                 | DW/WB    | 184.0                 |          |          |          | 184.0   |               |             |       |            |          |          |      |           |
| WB/DW Tk 1 PS                             | DW/WB    | 184.0                 |          |          |          | 184.0   |               | 184.0       |       |            |          |          |      |           |
| WB/DW Tk 1 SB                             | DW/WB    | 180.9                 |          |          |          | 180.9   |               | 180.9       |       |            |          |          |      |           |
| WB/DW Tk 2 PS                             | DW/WB    | 152.5                 |          |          |          | 152.5   |               | 152.5       |       |            |          |          |      |           |
| WB/DW Tk 2 SB                             | DW/WB    | 152.5                 |          |          |          | 152.5   |               | 152.5       |       |            |          |          |      |           |
| WB/DW Tk 3 PS                             | DW/WB    | 150.9                 |          |          |          | 150.9   |               | 150.9       |       |            |          |          |      |           |
| WB/DW Tk 3 SB                             | DW/WB    | 150.9                 |          |          |          | 150.9   |               | 150.9       |       |            |          |          |      |           |
| WB/DW Tk 4 PS                             | DW/WB    | 165.9                 |          |          |          | 165.9   |               | 165.9       |       |            |          |          |      |           |
| WB/DW Tk 4 SB                             | DW/WB    | 165.9                 |          |          |          | 165.9   |               | 165.9       |       |            |          |          |      |           |
| WB/DW Tk 5 PS                             | DW/WB    | 42.4                  |          |          |          | 42.4    |               | 42.4        |       |            |          |          |      |           |
| WB/DW Tk 5 SB                             | DW/WB    | 42.4                  |          |          |          | 42.4    |               | 42.4        |       |            |          |          |      |           |
| WB/DW Tk 6 PS                             | DW/WB    | 57.8                  |          |          |          | 57.8    |               | 57.8        |       |            |          |          |      |           |
| WB/DW Tk 6 SB                             | DW/WB    | 57.8                  |          |          |          | 57.8    |               | 57.8        |       |            |          |          |      |           |
| WB/DW Tk 7 PS                             | DW/WB    | 75.0                  |          |          |          | 75.0    |               |             |       |            |          |          |      |           |
| WB/DW Tk 7 SB                             | DW/WB    | 69.3                  |          |          |          | 69.3    |               |             |       |            |          |          |      |           |
| FW Tk 1 PS                                | FW       | 129.7                 |          |          |          |         |               | 129.7       |       |            |          |          |      |           |
| FW Tk 1 SB                                | FW       | 129.7                 |          |          |          |         |               | 129.7       |       |            |          |          |      |           |
| FW Tk 2 PS                                | FW       | 40.5                  |          |          |          |         |               | 40.5        |       |            |          |          |      |           |
| FW Tk 2 SB                                | FW       | 40.5                  |          |          |          |         |               | 40.5        |       |            |          |          |      |           |
| FW Tk 3 PS                                | FW       | 80.9                  |          |          |          |         |               | 80.9        |       |            |          |          |      |           |
| FW Tk 3 SB                                | FW       | 80.9                  |          |          |          |         |               | 80.9        |       |            |          |          |      |           |
| Potable Water Tk PS                       | Ships FW | 83.7                  |          |          |          |         | 83.7          |             |       |            |          |          |      |           |
| Potable Water Tk SB                       | Ships FW | 84.1                  |          |          |          |         | 84.1          |             |       |            |          |          |      |           |
| FO Overflow Tk                            | FO       | 35.9                  |          | 35.9     |          |         |               |             |       |            |          |          |      |           |
| FO Day Tk PS                              | FO       | 15.2                  |          | 15.2     |          |         |               |             |       |            |          |          |      |           |
| FO Day Tk SB                              | FO       | 15.2                  |          | 15.2     |          |         |               |             |       |            |          |          |      |           |
| FO Settling Tk PS                         | FO       | 38.1                  |          | 38.1     |          |         |               |             |       |            |          |          |      |           |
| FO Settling Tk SB                         | FO       | 38.1                  |          | 38.1     |          |         |               |             |       |            |          |          |      |           |
| FO Tk 1 C                                 | FO       | 100.3                 |          | 100.3    |          |         |               |             |       |            |          |          |      |           |
| FO Tk 2 PS                                | FO       | 183.8                 |          | 183.8    |          |         |               |             |       |            |          |          |      |           |
| FO Tk 2 SB                                | FO       | 183.8                 |          | 183.8    |          |         |               |             |       |            |          |          |      |           |
| FO Tk 3 PS                                | FO       | 182.6                 |          | 182.6    |          |         |               |             |       |            |          |          |      |           |
| FO Tk 3 SB                                | FO       | 182.6                 |          | 182.6    |          |         |               |             |       |            |          |          |      |           |
| Liquid Mud Tk 1 PS                        | LM       | 362.0                 |          |          |          |         |               |             |       | 362.0      |          |          |      |           |
| Liquid Mud Tk 1 SB                        | LM       | 362.0                 |          |          |          |         |               |             |       | 362.0      |          |          |      |           |
| Liquid Mud Tk 2 PS                        | LM       | 286.8                 |          |          |          |         |               |             |       | 286.8      |          |          |      |           |
| Liquid Mud Tk 2 SB                        | LM       | 286.8                 |          |          |          |         |               |             |       | 286.8      |          |          |      |           |
| Liquid Mud Tk 4 PS                        | LM       | 341.3                 |          |          |          |         |               |             |       | 341.3      |          |          |      |           |
| Liquid Mud Tk 4 SB                        | LM       | 341.3                 |          |          |          |         |               |             |       | 341.3      |          |          |      |           |
| LM/Methanol Tk 3 PS                       | LM/METH  | 214.7                 |          |          |          |         |               |             |       | 214.7      | 214.7    |          |      |           |
| LM/Methanol Tk 3 SB                       | LM/METH  | 214.7                 |          |          |          |         |               |             |       | 214.7      | 214.7    |          |      |           |
| Lube Oil Tk                               | LO       | 1.9                   |          |          |          |         |               |             |       |            |          | 1.9      |      |           |
| Dry Bulk Tk 1                             | Dry Bulk | 83.2                  |          |          | 83.2     |         |               |             |       |            |          |          |      |           |
| Dry Bulk Tk 2                             | Dry Bulk | 83.2                  |          |          | 83.2     |         |               |             |       |            |          |          |      |           |
| Dry Bulk Tk 3                             | Dry Bulk | 83.2                  |          |          | 83.2     |         |               |             |       |            |          |          |      |           |
| Dry Bulk Tk 4                             | Dry Bulk | 83.2                  |          |          | 83.2     |         |               |             |       |            |          |          |      |           |
| Dry Bulk Tk 5                             | Dry Bulk | 83.2                  |          |          | 83.2     |         |               |             |       |            |          |          |      |           |
| Total Volume [m <sup>3</sup> ]            |          |                       | 0.0      | 975.8    | 415.8    | 1,832.2 | 167.9         | 2,006.2     | 0.0   | 2,409.7    | 429.4    | 1.9      | 0.0  | 0.0       |
| Spec Sheet Total Volume [m <sup>3</sup> ] |          |                       | 0.0      | 909.4    | 415.8    | 328.3   | 167.9         | 2,006.2     | 0.0   | 2,409.7    | 429.4    | 1.9      | 0.0  | 0.0       |

\*Capacities shown are for lead vessel. Actual capacities may vary slightly.

\*Capacities shown in **RED** are excluded from the total volume.

\*Capacities shown in **BLUE** are included in another Tank's Capacity.

\*Capacities shown in **GREEN** are counted for multiple Tank Capacities.



KONGSBERG

# DP Capability Plot

## MAWEI 619-1

Case number : 1  
 Case description :  
 Thrusters active : T1-T4  
 Rudders active :

Input file reference : foot\_3398\_A.scp  
 Last modified : 2010-03-01 08.48 (v. 2.7.2)

Length overall : 87.0 m  
 Length between perpendiculars : 83.0 m  
 Breadth : 18.8 m  
 Draught : 5.9 m  
 Displacement : 6900.0 t (Cb = 0.73)  
 Longitudinal radius of inertia : 20.8 m (= 0.25 \* Lpp)  
 Pos. of origin ahead of Lpp/2 (Xo) : 0.0 m  
 Wind load coefficients : Calculated (Blendermann)  
 Current load coefficients : Calculated (Strip-theory)  
 Wave-drift load coefficients : Database (Scaled by Breadth/Length)

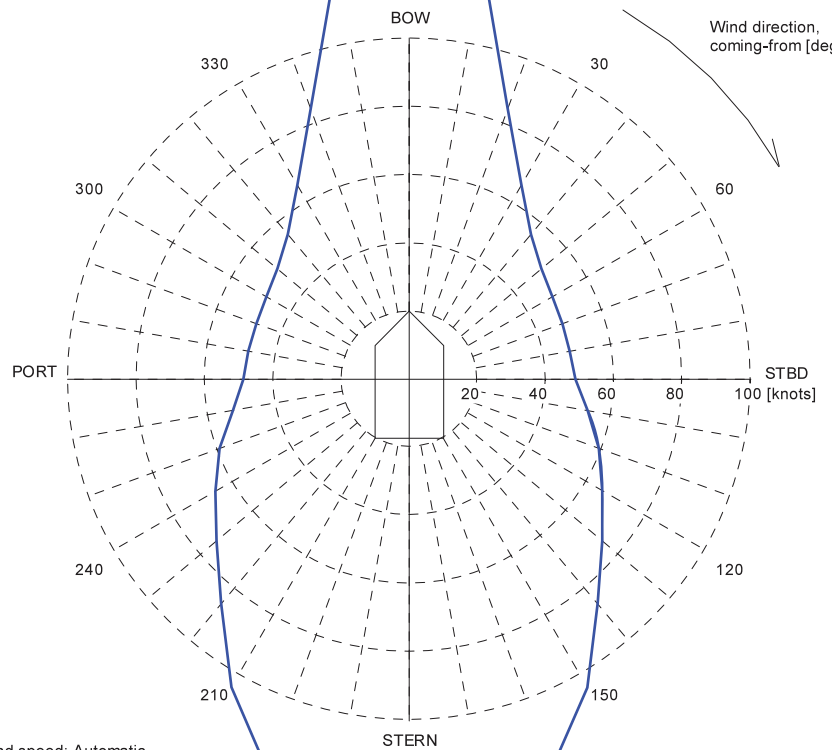
Tidal current direction offset : 0.0 deg  
 Wave direction offset : 0.0 deg  
 Wave spectrum type : JONSWAP (gamma = 3.30)  
 Wind spectrum type : NPD  
 Current - wave-drift interaction : OFF  
 Load dynamics allowance : 1.0 \* STD of thrust demand  
 Additional surge force : 0.0 tf  
 Additional sway force : 0.0 tf  
 Additional yawing moment : 0.0 tf.m  
 Additional force direction : Fixed  
 Density of salt water : 1026.0 kg/m³  
 Density of air : 1.226 kg/m³ (15 °C)

Power limitations : OFF  
 Thrust loss calculation : ON

| # | Thruster | X [m] | Y [m] | F+ [tf] | F- [tf] | Max [%] | Pe [kW] | Rudder |
|---|----------|-------|-------|---------|---------|---------|---------|--------|
| 1 | TUNNEL   | 34.7  | 0.0   | 13.6    | -13.6   | 100     | 910     |        |
| 2 | AZIMUTH  | 31.8  | 0.0   | 14.1    | -8.7    | 100     | 800     |        |
| 3 | AZIMUTH  | -40.0 | -4.0  | 35.4    | -21.8   | 100     | 2000    |        |
| 4 | AZIMUTH  | -40.0 | 4.0   | 35.4    | -21.8   | 100     | 2000    |        |

VARIABLE WIND AND WAVES  
 Limiting 1 minute mean wind speed in knots  
 at 10 m above sea level

ERN (99, 99, 86).  
 ERN are subject to DNV approval



Wind speed: Automatic  
 Significant wave height: DNV (ERN)  
 Mean zero up-crossing period: DNV (ERN)

Rotating tidal current: 1.46 knots  
 Rotating wind induced current: 0.000\*Uwi knots