



LEIBE TIDE as shown, GLEIXNER TIDE similar

LABROY 63M ANCHOR HANDLING TOWING SUPPLY VESSEL

Vessel Characteristics

Length, Overall:	206.7 ft	63 m
Beam:	49.2 ft	15 m
Depth:	20 ft	6.1 m
Maximum Draft:	17.1 ft	5.2 m
Minimum Height:	80.7 ft	24.6 m
Freeboard:	3 ft	0.9 m
Displacement:	3,290 lt	3,340 mt
Deadweight:	1,590 lt	1,620 mt
Clear Deck Space:	100 x 40 ft	31 x 12 m
Clear Deck Area:	3,980 ft ²	370 m ²
Deck Strength AFT:	1,540 lb/ft ²	7.5 t/m ²
Class Notations:	ABS: +A1, FFV-1, (E), +AMS, +ACCU, +DPS-2, TOWING VESSEL, OSV	

Capacities

Deck Cargo:	590 lt	600 t
Fuel Oil:	150,000 gal	570 m ³
Potable Water:	45,400 gal	170 m ³
Fresh Water:	74,600 gal	280 m ³
Drill/Ballast Water:	108,000 gal	410 m ³
Bulk Tanks (4 tanks):	6,000 ft ³	170 m ³
Liquid Mud (2.5 SG*):	2,570 bbl	410 m ³
*Max Structural Specific Gravity		
Oil Dispersant:	3,570 gal	13.5 m ³
Fire Fighting Foam:	2,150 gal	8.1 m ³

TIDEWATER

Find out more

tdw.com

Pg.2 Further Specifications
Pg.4 General Arrangement

Pg.5 Capacity Table
Pg.6 DP Capability Plot

Machinery

Main Engines (2):	MAK 8M 25		
Total HP:	7,080		
Propellers (2):	2.8 m DIA CPP 4 BLADE		
Gears (2):	ULSTEIN 600 AGHC-KP500ND 3.87:1		
Kort Nozzles:	2		
Rudders (2):	HIGHLIFT FLAP TYPE		
Primary Generators (2):	370 kw	440 v	60 hz
Driven by:	CAT 3408		
Secondary Generators (2):	1,200 kw	440 v	60 hz
Driven by:	MAIN ENGINES		
Emergency Generators (1):	94 kw	440 v	60 hz
Driven by:	CAT C4.4		
Bow Thruster (2):	KAWASAKI KT-55B3 TUNNEL		
Driven by:	400 KW ELECTRIC MOTOR		
Total Thrust:	13.5 st	12.2 mt	
Stern Thruster (1):	KAWASAKI KT-55B3 TUNNEL		
Driven by:	400 KW ELECTRIC MOTOR		
Total Thrust:	6.7 st	6.1 mt	

Performance*

Fuel Consumption Vs Speed		
Maximum:	24.5 m³/day (270 gph) @ 13.5 knots	
Cruising:	10.5 m³/day (120 gph) @ 10 knots	
Economical:	7.6 m³/day (83.7 gph) @ 8 knots	
Standby:	1.9 m³/day (21 gph) @ 0 knots	
Range @ 10 Knots:	13,000 nm	
Bollard Pull	91.6 st	83.1 mt
Transfer Rates		
Fuel Oil:	550 gpm @ 250 ft	120 m³/h @ 75 m
Fresh Water:	550 gpm @ 250 ft	120 m³/h @ 75 m
Drill/Ballast Water:	550 gpm @ 250 ft	120 m³/h @ 75 m
Bulk:	25 cfm @ 190 ft	42.4 m³/h @ 57 m
Liquid Mud:	440 gpm @ 260 ft	100 m³/h @ 80 m

Tow/Anchor Handling

Winch:	RR - BRATTVAAG (250T BRAKE)
Model:	SL 200WX-B2T
Line Pull:	200 mt
Tow/AH Wire:	1,400 m / 1,400 m of 58 mm
Pennant Reels (1):	1,500 m of 58 mm
Shark Jaw:	KARM FORK 200 MT SWL
Tow Pins:	KARMOY 200 MT SWL
Chain Handler:	1 X 76MM, 1 X 81MM
Stern Roller:	RR - 16.4FT X 6FT DIA; 200 mt SWL

Nav/Comms Equipment

Radar(s):	2
Depth Sounder:	1
Cyro Compass:	3
Wind Seed Indicators:	3
Doppler Log:	1
Radio:	2 x VHF; 1 x SSB
Sat Com:	INMARSAT-C

Accommodations

No. of Berths:	32
Cabins:	4x1-man, 6x2-man & 4x4-man
Certified to Carry:	32
Galley seating:	24
Hospital:	Yes

Deck Equipment

Anchors (2):	3836 lbs HHP
Anchor Chain:	410 m of 38 mm chain per side
Windlass:	RR - BRATTVAAG 8 MT 14M/MIN
Crane (1):	3 t @ 15 m
Capstans (2):	5.2 t RR - BRATTVAAG (19m/min)
Tugger (2):	12 t RR - BRATTVAAG (24M/MIN)

*Approximate values assuming Ideal Conditions



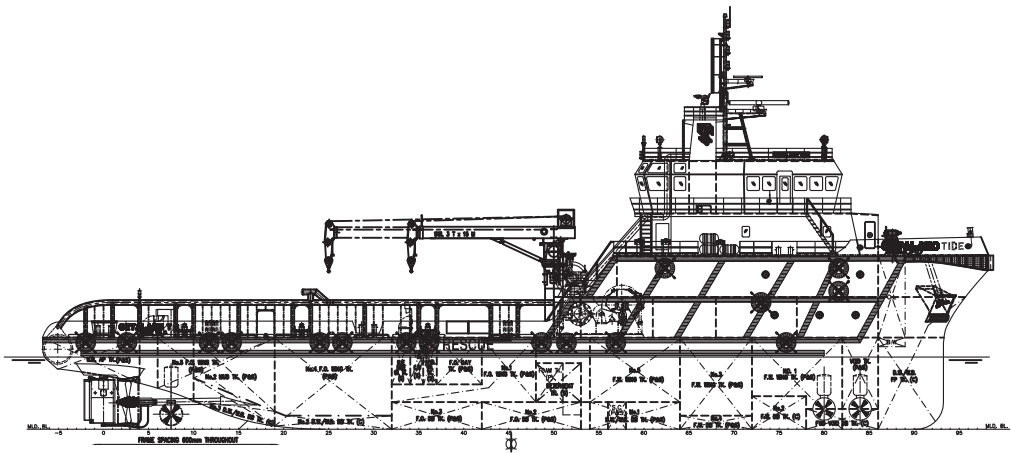
Registration

Flag: MEXICO	Home Port: ISLA DEL CARMEN	
Hull Number: 175	IMO N°: 9513385	
Year Built: 2009	Call Sign: XCLD2	
Builder:	LABROY SHIPBUILDING & ENG	
Tonnage (ITC):	1815 GT	544 NT

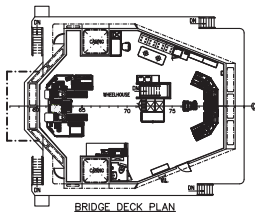
Special Equipment

Fire Fighting:	FiFi-1
Dynamic Positioning:	DP-2
Ref. Systems:	2 x MRU; 2 x DGPS 1 x Microwave-based; 1 x Laser-based
Water Maker:	1X10 T/DAY
Mud Circulation System:	Yes
Rescue Zone:	Yes
Rescue Boat:	6 MAN MOB
Fuel Monitoring:	KRILL & EMERSON
Reefer Sockets:	4x 440V 32A; 2x 440V 15A; 2x 220V 30A
Misc:	1xAIS; MSD - 40 Persons

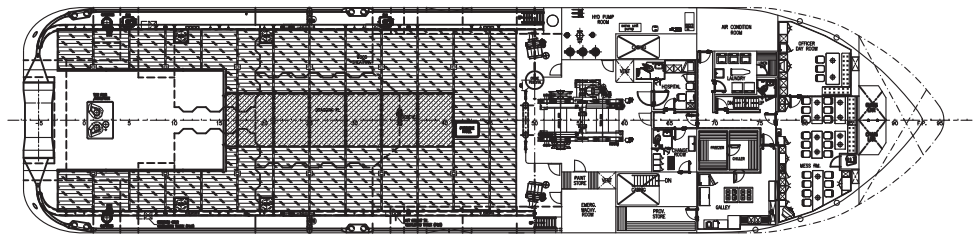
*Approximate values assuming Ideal Conditions



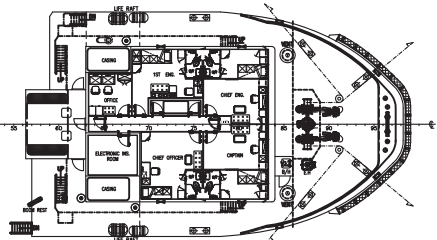
OUTBOARD PROFILE



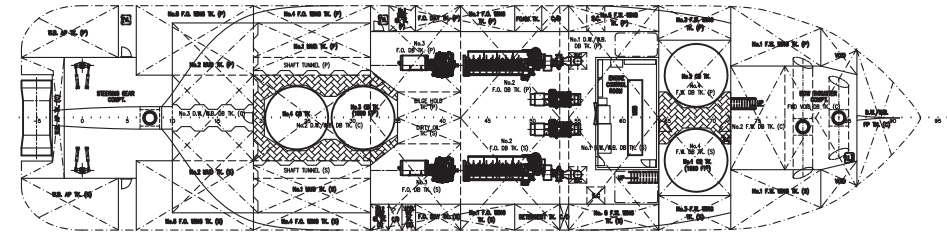
BRIDGE DECK PLAN



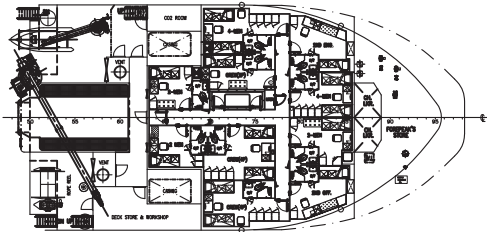
MAIN DECK PLAN



UPPER FORECASTLE DECK



BELOW DECK PLAN



FORECASTLE DECK



Tank	Contents	Volume m ³	Base Oil	Fuel Oil	Dry Bulk	DW/WB	Potable Water	Fresh Water	Brine	Liquid Mud	Methanol	Lube Oil	Foam	Oil Disp.
WB AP P	DW/WB	22.0				22.0								
WB AP S	DW/WB	22.0				22.0								
WB AP C	DW/WB	19.7				19.7								
FP WB TANK	DW/WB	149.2				149.2								
No. 1 DW/WB DB P	DW/WB	65.4				65.4								
No. 1 DW/WB DW DB S	DW/WB	65.7				65.7								
No. 2 DW/WB DW DB C	DW/WB	35.8				35.8								
No. 3 DW/WB DW DB C	DW/WB	30.9				30.9								
No. 1 FW Wg Tk P	Ship's FW	85.9					85.9							
No. 1 FW Wg Tk S	Ship's FW	85.9					85.9							
No. 2 FW DB Tk C	FW	53.1						53.1						
No. 3 FW Wg Tk P	FW	50.4						50.4						
No. 3 FW Wg Tk S	FW	50.4						50.4						
No. 4 FW DB Tk P	FW	20.4						20.4						
No. 4 FW DB Tk S	FW	20.2						20.2						
No. 5 FW Wg Tk P	FW	44.0						44.0						
No. 5 FW Wg Tk S	FW	44.0						44.0						
No. 1 FO Wg Tk P	FO	36.8		36.8										
No. 1 FO Wg Tk S	FO	39.3		39.3										
No. 2 FO DB P	FO	68.3		68.3										
No. 2 FO DB S	FO	70.0		70.0										
No. 3 FO DB P	FO	51.8		51.8										
No. 3 FO DB S	FO	51.8		51.8										
No. 4 FO Wg Tk P	FO	62.4		62.4										
No. 4 FO Wg Tk S	FO	62.4		62.4										
No. 5 FO Wg Tk P	FO	62.8		62.8										
No. 5 FO Wg Tk S	FO	62.8		62.8										
FO DAY Tk P	FO	16.1		16.1										
FO DAY Tk S	FO	16.1		16.1										
No. 1 Mud P	LM	105.3								105.3				
No. 1 Mud S	LM	107.2								107.2				
No. 2 Mud P	LM	98.2								98.2				
No. 2 Mud S	LM	98.2								98.2				
Dispersant Tk S	DISP	13.5												13.5
Foam Tk P	FOAM	8.1											8.1	
Lube Oil Tk P	LO	9.7										9.7		
M/E LO Tk P	LO	6.4										6.4		
Lube Oil Storage Tk S	LO	4.8										4.8		
CEM Tk 1 P	Dry Bulk	42.5			42.5									
CEM Tk 2 S	Dry Bulk	42.5			42.5									
CEM Tk 3 C	Dry Bulk	42.5			42.5									
CEM Tk 4 C	Dry Bulk	42.5			42.5									
Total Volume [m ³]			0.0	600.5	170.0	410.7	171.7	282.4	0.0	408.9	0.0	20.9	8.1	13.5
Spec Sheet Total Volume [m ³]			0.0	568.2	170.0	410.7	171.7	282.4	0.0	408.9	0.0	20.9	8.1	13.5

*Capacities shown are for lead vessel. Actual capacities may vary slightly.

*Capacities shown in **RED** are excluded from the total volume.

*Capacities shown in **BLUE** are included in another Tank's Capacity.

*Capacities shown in **GREEN** are counted for multiple Tank Capacities.

GLEIXNER TIDE

DP Capability Plot

