



HART TIDE as shown, HANDIN TIDE similar

MMC 887 PLATFORM SUPPLY VESSEL

Vessel Characteristics

Length, Overall:	285.8 ft	87.1 m
Beam:	61.7 ft	18.8 m
Depth:	24.3 ft	7.4 m
Maximum Draft:	20 ft	6.1 m
Light Draft:	7.6 ft	2.3 m
Minimum Height:	91.2 ft	27.8 m
Freeboard:	4.6 ft	1.4 m
Displacement:	7,600 lt	7,720 mt
Deadweight:	5,050 lt	5,130 mt
Clear Deck Space:	196 x 52 ft	60 x 16 m
Clear Deck Area:	9,980 ft ²	930 m ²
Deck Strength AFT:	1,020 lb/ft ²	5 t/m ²
Class Notations:	ABS: +A1, (E), +AMS, +DPS-2, FFV-1, OSV, RW, UWILD	

Capacities

Deck Cargo:	2,790 lt	2,840 t
Fuel Oil:	240,000 gal	910 m ³
Potable Water:	44,300 gal	170 m ³
Fresh Water:	530,000 gal	2,010 m ³
Drill/Ballast Water:	86,700 gal	330 m ³
Bulk Tanks (5 tanks):	14,700 ft ³	420 m ³
Liquid Mud (2.4 SG*):	15,200 bbl	2,410 m ³
*Max Structural Specific Gravity		
Methanol:	2,700 bbl	430 m ³

TIDEWATER

Find out more

tdw.com

Pg.2 Further Specifications

Pg.4 Capacity Table

Pg.3 General Arrangement

Pg.5 DP Capability Plot

Machinery

Diesel Electric Vessel			
Propulsive/Total HP:	5,360 / 10,200		
Z-Drives:	Yes		
Propellers (2):	4-Blade FP Rolls-Royce		
Kort Nozzles:	2		
Primary Generators (4):	1,820 kw	480 v	60 hz
Driven by:	Cummins QSK60-D(M)		
Emergency Generators (1):	150 kw	480 v	60 hz
Driven by:	Cummins 6CTA8.3-D(M)		
Bow Thruster (2):	1220 HP CPP TT, 1073 HP CPP DD		
Driven by:	ELECTRIC MOTOR DRIVEN		
Total Thrust:	28.7 st	26 mt	

Deck Equipment

Anchors (2):	5456 lbs HHP
Anchor Chain:	250 m of 50 mm chain per side
Windlass:	Electric, 65/32 kn @10/20 m/m
Crane (1):	2 t @ 10.1 m
Capstans (2):	7.5 t Electric, 328 ft. of .5 in.
Tugger (2):	10 t ELECTRIC, PLIMSOLL

Accommodations

No. of Berths:	60
Cabins:	8x1-man, 18x2-man & 4x4-man
Certified to Carry:	60
Galley seating:	30
Hospital:	Yes

Registration

Flag: MEXICO	Home Port: DOS BOCAS	
Hull Number: 1913	IMO N ^o : 9533672	
Year Built: 2012	Call Sign: XCCD7	
Builder:	FUJIAN MAWEI	
Tonnage (ITC):	3601 GT	1429 NT

Performance*

Fuel Consumption Vs Speed		
Maximum:	28 m³/day (310 gph) @ 14 knots	
Cruising:	12.5 m³/day (140 gph) @ 10 knots	
Economical:	10 m³/day (110 gph) @ 8 knots	
Standby:	2.3 m³/day (25 gph) @ 0 knots	
Range @ 10 Knots:	17,400 nm	
Transfer Rates		
Fuel Oil:	660 gpm @ 300 ft	150 m³/h @ 92 m
Fresh Water:	660 gpm @ 300 ft	150 m³/h @ 92 m
Drill/Ballast Water:	660 gpm @ 300 ft	150 m³/h @ 92 m
Bulk:	49 cfm @ 180 ft	83.2 m³/h @ 56 m
Liquid Mud:	660 gpm @ 190 ft	150 m³/h @ 58 m
Methanol:	330 gpm @ 300 ft	75 m³/h @ 92 m

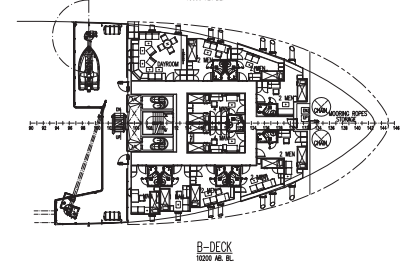
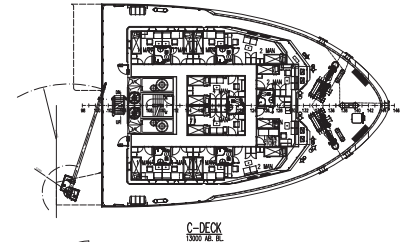
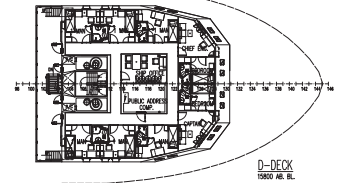
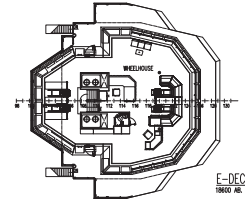
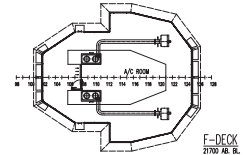
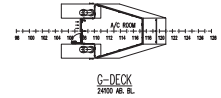
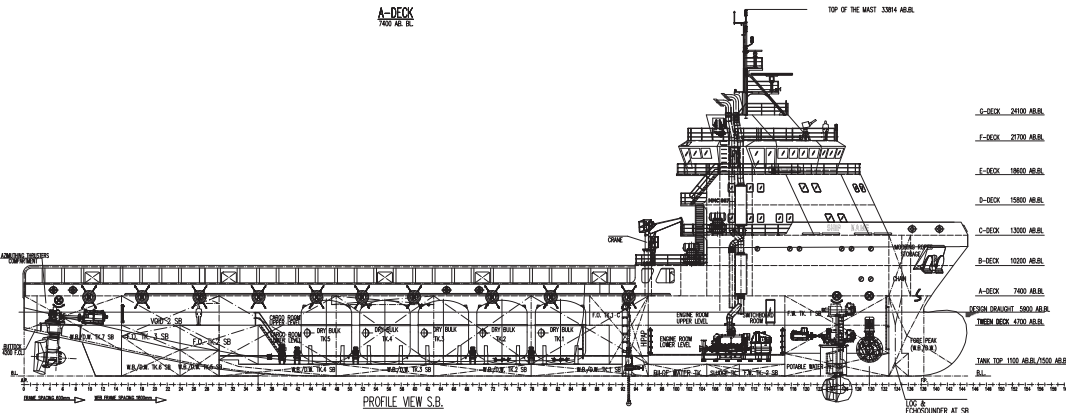
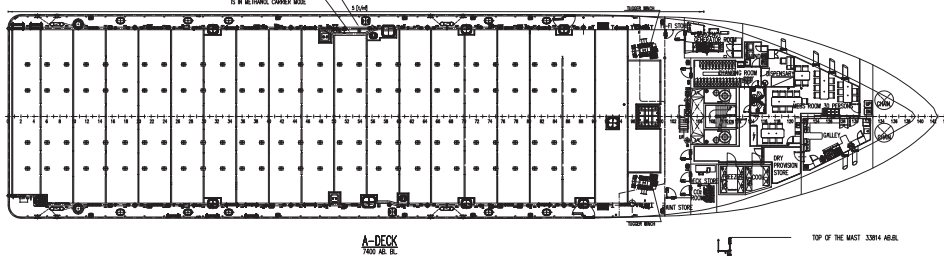
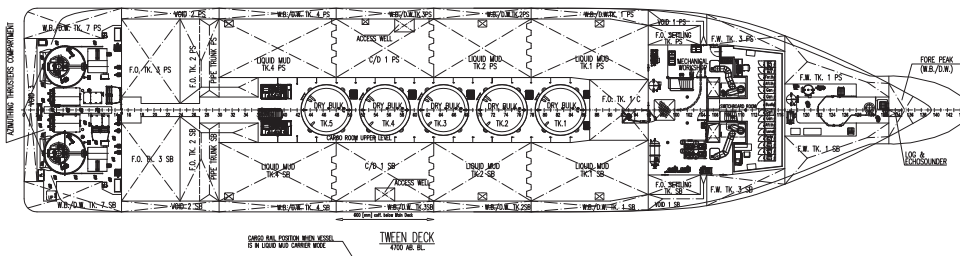
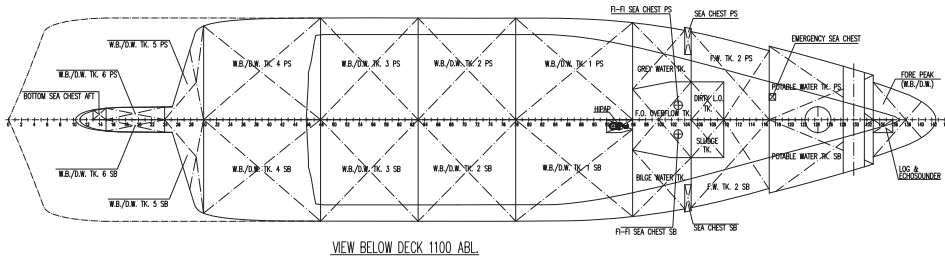
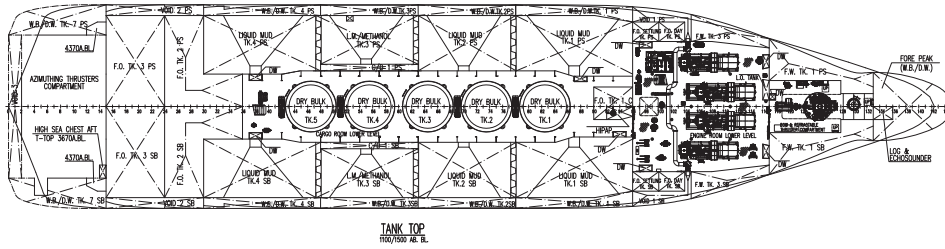
Nav/Comms Equipment

Radar(s):	2
Depth Sounder:	1
Gyro Compass:	3
Wind Speed Indicators:	3
Doppler Log:	1
Radio:	3 x VHF; 1 x SSB

Special Equipment

Fire Fighting:	FiFi-1
Dynamic Positioning:	DP-2
Ref. Systems:	2 x MRU; 2 x DGPS 1 x Microwave-based; 1 x Laser-based
Mud Circulation System/ Mud Mixers:	Yes/Yes
Tank Cleaning:	Yes
Rescue Boat:	Solas Approved
Fuel Monitoring:	FUELTRAX
Reefer Sockets:	4x 32A 480V
Misc:	SEWAGE TREATMENT-60 Persons

*Approximate values assuming Ideal Conditions



- G-DECK 2400 ABL.
- F-DECK 2100 ABL.
- E-DECK 1800 ABL.
- D-DECK 1500 ABL.
- C-DECK 1300 ABL.
- B-DECK 10200 ABL.
- A-DECK 7400 ABL.
- DECK HEIGHT 1500 ABL.
- TANK TOP 1100/1500 ABL.
- LOC & EXPOSUNDER AT SB

HANDIN TIDE

Capacity Table



Tank Table														
Tank	Contents	Volume m ³	Base Oil	Fuel Oil	Dry Bulk	DW/WB	Potable Water	Fresh Water	Brine	Liquid Mud	Methanol	Lube Oil	Foam	Oil Disp.
Fore Peak	DW/WB	184.0				184.0								
WB/DW Tk 1 PS	DW/WB	184.0				184.0		184.0						
WB/DW Tk 1 SB	DW/WB	180.9				180.9		180.9						
WB/DW Tk 2 PS	DW/WB	152.5				152.5		152.5						
WB/DW Tk 2 SB	DW/WB	152.5				152.5		152.5						
WB/DW Tk 3 PS	DW/WB	150.9				150.9		150.9						
WB/DW Tk 3 SB	DW/WB	150.9				150.9		150.9						
WB/DW Tk 4 PS	DW/WB	165.9				165.9		165.9						
WB/DW Tk 4 SB	DW/WB	165.9				165.9		165.9						
WB/DW Tk 5 PS	DW/WB	42.4				42.4		42.4						
WB/DW Tk 5 SB	DW/WB	42.4				42.4		42.4						
WB/DW Tk 6 PS	DW/WB	57.8				57.8		57.8						
WB/DW Tk 6 SB	DW/WB	57.8				57.8		57.8						
WB/DW Tk 7 PS	DW/WB	75.0				75.0								
WB/DW Tk 7 SB	DW/WB	69.3				69.3								
FW Tk 1 PS	FW	129.7						129.7						
FW Tk 1 SB	FW	129.7						129.7						
FW Tk 2 PS	FW	40.5						40.5						
FW Tk 2 SB	FW	40.5						40.5						
FW Tk 3 PS	FW	80.9						80.9						
FW Tk 3 SB	FW	80.9						80.9						
Potable Water Tk PS	Ships FW	83.7					83.7							
Potable Water Tk SB	Ships FW	84.1					84.1							
FO Overflow Tk	FO	35.9		35.9										
FO Day Tk PS	FO	15.2		15.2										
FO Day Tk SB	FO	15.2		15.2										
FO Settling Tk PS	FO	38.1		38.1										
FO Settling Tk SB	FO	38.1		38.1										
FO Tk 1 C	FO	100.3		100.3										
FO Tk 2 PS	FO	183.8		183.8										
FO Tk 2 SB	FO	183.8		183.8										
FO Tk 3 PS	FO	182.6		182.6										
FO Tk 3 SB	FO	182.6		182.6										
Liquid Mud Tk 1 PS	LM	362.0								362.0				
Liquid Mud Tk 1 SB	LM	362.0								362.0				
Liquid Mud Tk 2 PS	LM	286.8								286.8				
Liquid Mud Tk 2 SB	LM	286.8								286.8				
Liquid Mud Tk 4 PS	LM	341.3								341.3				
Liquid Mud Tk 4 SB	LM	341.3								341.3				
LM/Methanol Tk 3 PS	LM/METH	214.7								214.7	214.7			
LM/Methanol Tk 3 SB	LM/METH	214.7								214.7	214.7			
Lube Oil Tk	LO	1.9										1.9		
Dry Bulk Tk 1	Dry Bulk	83.2			83.2									
Dry Bulk Tk 2	Dry Bulk	83.2			83.2									
Dry Bulk Tk 3	Dry Bulk	83.2			83.2									
Dry Bulk Tk 4	Dry Bulk	83.2			83.2									
Dry Bulk Tk 5	Dry Bulk	83.2			83.2									
Total Volume [m ³]			0.0	975.8	415.8	1,832.2	167.9	2,006.2	0.0	2,409.7	429.4	1.9	0.0	0.0
Spec Sheet Total Volume [m ³]			0.0	909.4	415.8	328.3	167.9	2,006.2	0.0	2,409.7	429.4	1.9	0.0	0.0

*Capacities shown are for lead vessel. Actual capacities may vary slightly.

*Capacities shown in **RED** are excluded from the total volume.

*Capacities shown in **BLUE** are included in another Tank's Capacity.

*Capacities shown in **GREEN** are counted for multiple Tank Capacities.

