



BROUSSARD TIDE as shown, HEBERT TIDE similar

## QSY 220 PLATFORM SUPPLY VESSEL

### Vessel Characteristics

Length, Overall:	217.2 ft	66.2 m
Beam:	45.9 ft	14 m
Depth:	17.1 ft	5.2 m
Maximum Draft:	13.8 ft	4.2 m
Light Draft:	5.9 ft	1.8 m
Minimum Height:	58.5 ft	17.8 m
Freeboard:	3.3 ft	1 m
Displacement:	2,940 lt	2,980 mt
Deadweight:	1,850 lt	1,880 mt
Clear Deck Space:	156 x 36 ft	48 x 11 m
Clear Deck Area:	5,460 ft <sup>2</sup>	510 m <sup>2</sup>
Deck Strength AFT:	1,020 lb/ft <sup>2</sup>	5 t/m <sup>2</sup>
Class Notations:	ABS: +A1, +AMS, +DPS-1	

### Capacities

Deck Cargo:	1,250 lt	1,270 t
Fuel Oil:	181,000 gal	680 m <sup>3</sup>
Potable Water:	26,200 gal	99.2 m <sup>3</sup>
Fresh Water:	150,000 gal	570 m <sup>3</sup>
Drill/Ballast Water:	18,700 gal	70.8 m <sup>3</sup>
Bulk Tanks (5 tanks):	8,290 ft <sup>3</sup>	230 m <sup>3</sup>
Liquid Mud (2.6 SG*):	2,990 bbl	480 m <sup>3</sup>

\*Max Structural Specific Gravity

## TIDEWATER

Find out more

[tdw.com](http://tdw.com)

Pg.2 Further Specifications

Pg.4 Capacity Table

Pg.3 General Arrangement

Pg.5 DP Capability Plot



### Machinery

<b>Main Engines (2):</b>	CAT 3516B		
<i>Total HP:</i>	4,520		
<b>Z-Drives:</b>	Yes		
<b>Propellers (2):</b>	AQUAMASTER US 205		
<b>Kort Nozzles:</b>	2		
<b>Primary Generators (3):</b>	190 kw	480 v	60 hz
<i>Driven by:</i>	CAT 3306B		
<b>Emergency Generators (1):</b>	65 kw	480 v	60 hz
<i>Driven by:</i>	CAT 3304		
<b>Bow Thruster (1):</b>	Combination Drop Down/Tunnel		
<i>Driven by:</i>	1000 hp CAT 3508B Engine		
<i>Total Thrust:</i>	12.2 st	11.1 mt	

### Deck Equipment

<b>Anchors (2):</b>	3,000 lb Workboat Style
<b>Anchor Chain:</b>	270 m of 32 mm chain per side
<b>Windlass:</b>	COASTAL MARINE 2W12531-13-00

### Accommodations

<b>No. of Berths:</b>	18
<b>Cabins:</b>	2x1-man, 6x2-man & 1x4-man
<b>Certified to Carry:</b>	18
<b>Galley seating:</b>	13

### Registration

<b>Flag:</b> MEXICO	<b>Home Port:</b> DOS BOCAS
<b>Hull Number:</b> 1238	<b>IMO N°:</b> 9273545
<b>Year Built:</b> 2006	<b>Call Sign:</b> XCAO4
<b>Builder:</b>	QUALITY SHIPYARDS
<b>Tonnage (ITC):</b>	1235 GT      473 NT

### Performance\*

Fuel Consumption Vs Speed		
Maximum:	20 m³/day (220 gph) @ 12.9 knots	
Cruising:	9.2 m³/day (100 gph) @ 10 knots	
Range @ 10 Knots:	12,300 nm	
Transfer Rates		
Fuel Oil:	500 gpm @ 320 ft	110 m³/h @ 98 m
Fresh Water:	500 gpm @ 390 ft	110 m³/h @ 120 m
Drill/Ballast Water:	500 gpm @ 390 ft	110 m³/h @ 120 m
Bulk:	28 cfm @ 230 ft	47.5 m³/h @ 70 m
Liquid Mud:	800 gpm @ 420 ft	180 m³/h @ 130 m

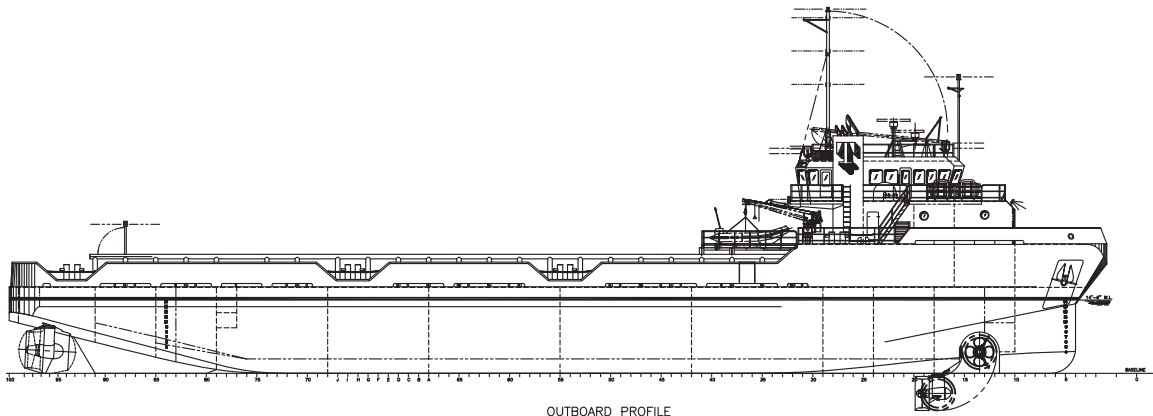
### Nav/Comms Equipment

<b>Radar(s):</b>	2
<b>Depth Sounder:</b>	1
<b>Gyro Compass:</b>	2
<b>Wind Speed Indicators:</b>	2
<b>Doppler Log:</b>	1
<b>Radio:</b>	3 x VHF; 1 x SSB
<b>Sat Com:</b>	1XINMARSAT-C

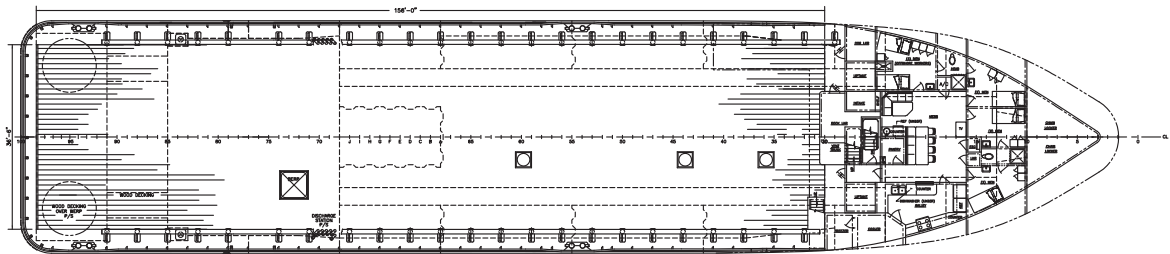
### Special Equipment

<b>Firefighting:</b>	1x 1,200 m³/hr Fire Monitor(s)
<b>Dynamic Positioning:</b>	DP-1
<i>Ref. Systems:</i>	1 x MRU; 2 x DGPS 1 x Laser-based
<b>Mud Mixers:</b>	Yes
<b>Tank Cleaning:</b>	Yes
<b>Rescue Boat:</b>	SOLAS Approved
<b>Fuel Monitoring:</b>	KRILL & EMERSON
<b>Reefer Sockets:</b>	2x 440V 15A; 2x 220V 30A
<b>Misc:</b>	MSD-18 PERSONS

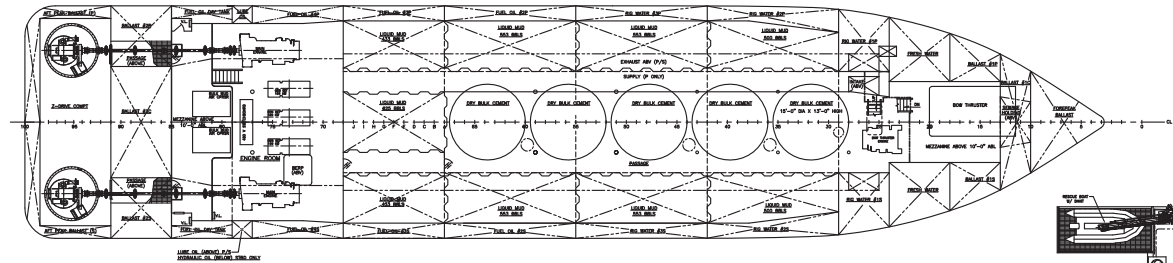
\*Approximate values assuming Ideal Conditions



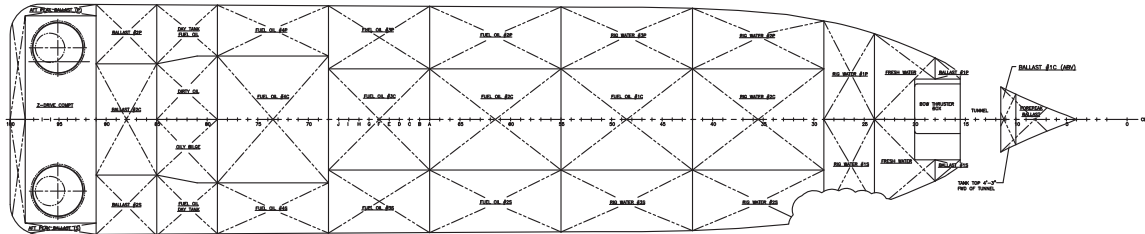
OUTBOARD PROFILE



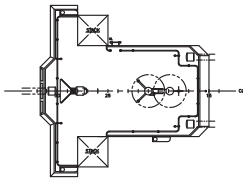
MAIN DECK



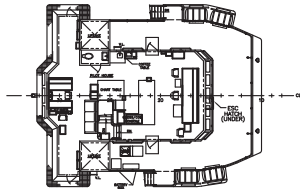
HOLD PLAN



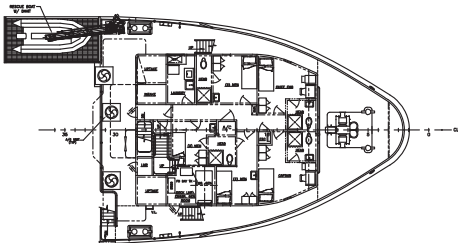
INNERBOTTOM PLAN



PILOT HOUSE TOP



BRIDGE DECK



FOCSLS DECK (01 LEVEL)

# HEBERT TIDE

## Capacity Table



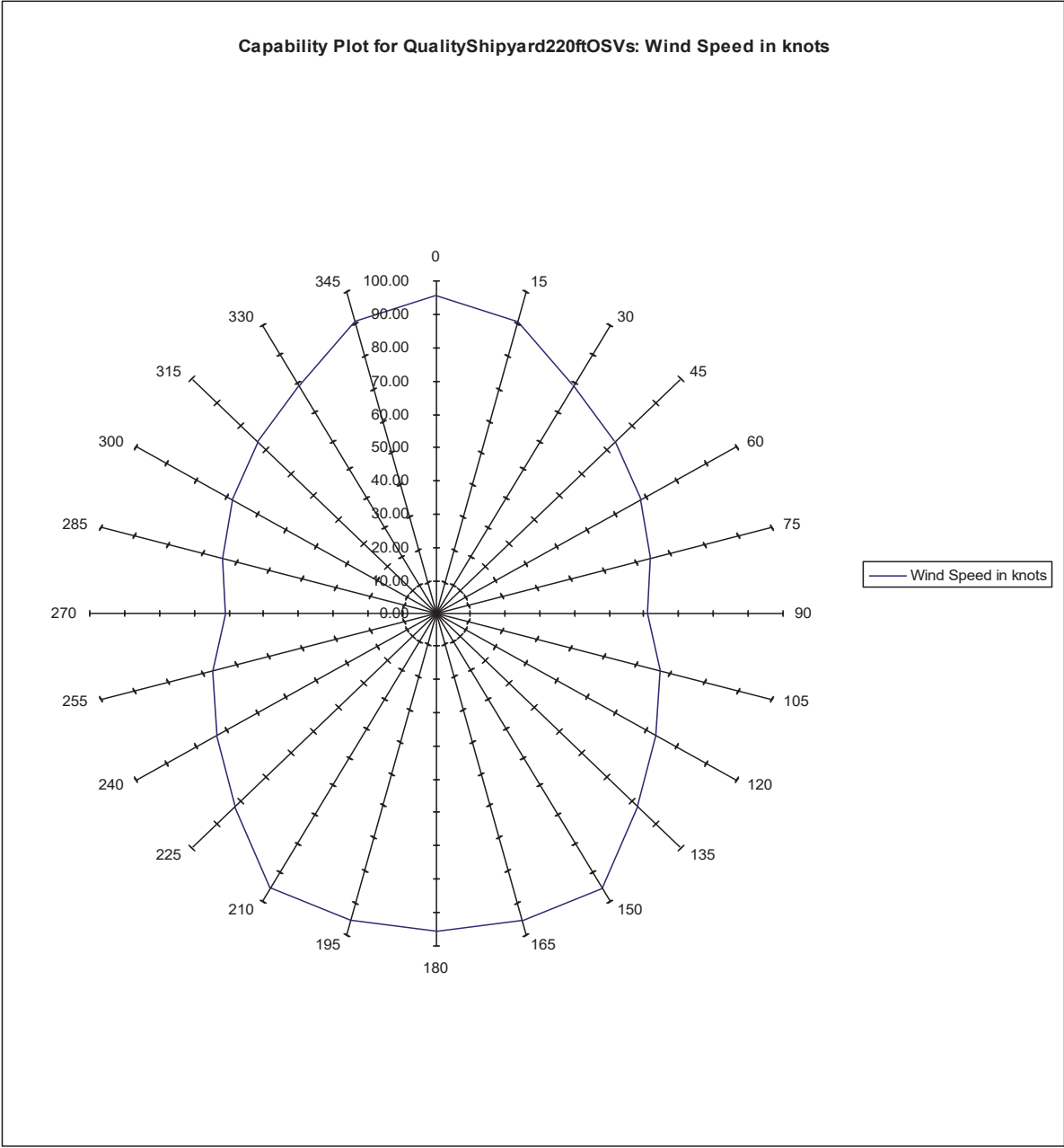
Tank	Contents	Volume m <sup>3</sup>	Base Oil	Fuel Oil	Dry Bulk	DW/WB	Potable Water	Fresh Water	Brine	Liquid Mud	Methanol	Lube Oil	Foam	Oil Disp.
DW/WB FP Tank	DW/WB	36.9				36.9								
No. 1 DW/WB P	DW/WB	16.6				16.6		16.6						
No. 1 DW/WB S	DW/WB	16.6				16.6		16.6						
No. 1 DW/WB C	DW/WB	22.4				22.4		22.4						
No. 2 DW/WB P	DW/WB	30.0				30.0		30.0						
No. 2 DW/WB S	DW/WB	30.0				30.0		30.0						
No. 2 DW/WB C	DW/WB	88.4				88.4		88.4						
DW/WB AP P	DW/WB	17.0				17.0								
DW/WB AP S	DW/WB	17.0				17.0								
No. 1 FW P	Ships FW	49.5					49.5							
No. 1 FW S	Ships FW	49.8					49.8							
No. 1 RW P	FW	46.9						46.9						
No. 1 RW S	FW	48.0						48.0						
No. 2 RW P	FW	50.9						50.9						
No. 2 RW S	FW	50.9						50.9						
No. 2 RW C	FW	40.7						40.7						
No. 3 RW P	FW	53.7						53.7						
No. 3 RW S	FW	53.7						53.7						
No. 1 FO C	FO	41.1		41.1										
No. 2 FO P	FO	54.2		54.2										
No. 2 FO S	FO	54.2		54.2										
No. 2 FO C	FO	41.1		41.1										
No. 3 FO P	FO	41.7		41.7										
No. 3 FO S	FO	41.7		41.7										
No. 3 FO C	FO	31.6		31.6										
No. 4 FO P	FO	40.0		40.0										
No. 4 FO S	FO	39.3		39.3										
No. 4 FO C	FO	42.0		42.0										
FO Day Tk P	FO	21.1		21.1										
FO Day Tk S	FO	21.1		21.1										
No. 1 LM P	LM	79.7								79.7				
No. 1 LM S	LM	79.7								79.7				
No. 2 LM P	LM	88.6								88.6				
No. 2 LM S	LM	88.6								88.6				
No. 3 LM P	LM	88.6								88.6				
No. 3 LM S	LM	88.6								88.6				
No. 4 LM P	LM	69.3								69.3				
No. 4 LM S	LM	69.3								69.3				
No. 4 LM C	LM	100.0								100.0				
Cem Tk. 1	Dry Bulk	46.9			46.9									
Cem Tk. 2	Dry Bulk	46.9			46.9									
Cem Tk. 3	Dry Bulk	46.9			46.9									
Cem Tk. 4	Dry Bulk	46.9			46.9									
Cem Tk. 5	Dry Bulk	46.9			46.9									
Lube Oil (P)	LO	1.9										1.9		
Lube Oil (S)	LO	1.9										1.9		
Total Volume [m <sup>3</sup> ]			0.0	468.9	234.7	274.9	99.2	549.0	0.0	752.3	0.0	3.9	0.0	0.0
Spec Sheet Total Volume [m <sup>3</sup> ]			0.0	426.7	234.7	70.8	99.2	549.0	0.0	752.3	0.0	3.9	0.0	0.0

\*Capacities shown are for lead vessel. Actual capacities may vary slightly.

\*Capacities shown in **RED** are excluded from the total volume.

\*Capacities shown in **BLUE** are included in another Tank's Capacity.

\*Capacities shown in **GREEN** are counted for multiple Tank Capacities.



Wind Angle is stepped from 0 to 360 deg.  
Wave Angle is stepped from 0 to 360 deg.  
Current Angle is stepped from 0 to 360 deg.

Wind Speed is Set Automatically.  
Wave Height is Derived from Wind Speed.  
Current Speed is 0 knots.

