



REMONTOWA 155T ANCHOR HANDLING TOWING SUPPLY VESSEL

Vessel Characteristics

Length, Overall:	229.7 ft	70 m
Beam:	50.9 ft	15.5 m
Depth:	21.7 ft	6.6 m
Maximum Draft:	18.4 ft	5.6 m
Minimum Height:	75.8 ft	23.1 m
Freeboard:	4.9 ft	1.5 m
Displacement:	3,980 lt	4,040 mt
Deadweight:	2,030 lt	2,060 mt
Clear Deck Space:	115 x 39 ft	35 x 12 m
Clear Deck Area:	4,380 ft ²	410 m ²
Deck Strength AFT:	1,020 lb/ft ²	5 t/m ²
Class Notations:	ABS: +A1, (E), OSV, FFV-1, +AMS, +ACCU, +DPS-2, AH, Towing Vessel	

Capacities

Deck Cargo:	980 lt	1,000 t
Fuel Oil:	193,000 gal	730 m ³
Potable Water:	26,200 gal	99.1 m ³
Fresh Water:	135,000 gal	510 m ³
Drill/Ballast Water:	208,000 gal	790 m ³
Bulk Tanks (4 tanks):	6,840 ft ³	190 m ³
Liquid Mud (2.4 SG*):	2,990 bbl	480 m ³
*Max Structural Specific Gravity		

TIDEWATER

Find out more

tdw.com

Pg.2 Further Specifications
Pg.4 General Arrangement

Pg.5 Capacity Table
Pg.6 DP Capability Plot



Machinery

Main Engines (2):	CAT C280-16 DITA		
Total HP:	13,600		
Propellers (2):	CPP; 3700 mm; SCANA VOLDA		
Gears (2):	SCANA VOLDA		
Kort Nozzles:	2		
Rudders (2):	HIGH LIFT		
Primary Generators (2):	250 kw	440 v	60 hz
Driven by:	Scania GASI 12-07		
Secondary Generators (2):	1,720 kw	440 v	60 hz
Driven by:	SHAFT		
Emergency Generators (1):	150 kw	440 v	60 hz
Driven by:	Scania GASI 7-06E		
Bow Thruster (2):	BRUNVOLL		
Driven by:	789 hp, CPP Tunnel		
Total Thrust:	19.7 st	17.9 mt	
Stern Thruster (1):	BRUNVOLL		
Driven by:	789 hp, CPP Tunnel		
Total Thrust:	9.8 st	8.9 mt	

Performance*

Fuel Consumption Vs Speed		
Maximum:	37.2 m³/day (410 gph) @ 14 knots	
Cruising:	29.1 m³/day (320 gph) @ 12 knots	
Economical:	17.7 m³/day (190 gph) @ 8 knots	
Standby:	1.4 m³/day (15 gph) @ 0 knots	
Range @ 12 Knots:	7,000 nm	
Bollard Pull	170 st	150 mt
Transfer Rates		
Fuel Oil:	660 gpm @ 300 ft	150 m³/h @ 92 m
Fresh Water:	660 gpm @ 300 ft	150 m³/h @ 92 m
Drill/Ballast Water:	660 gpm @ 300 ft	150 m³/h @ 92 m
Bulk:	28.5 cfm @ 190 ft	48.4 m³/h @ 57 m
Liquid Mud:	660 gpm @ 470 ft	150 m³/h @ 140 m

Tow/Anchor Handling

Winch:	2 DRUM HP HYD (450T BRAKE)
Model:	FUKUSHIMA
Line Pull:	350 mt
Tow/AH Wire:	1,500 m / 1,500 m of 76 mm
Pennant Reels (2):	1,500 m of 76 mm
Shark Jaw:	KARMOY 300 MT
Tow Pins:	KARMOY 160 MT
Chain Lockers (2):	1,220 m of 76mm chain
Chain Handler:	2 X 3IN
Stern Roller:	SMITH BERGER 2.5MX4M; 450 mt SWL

Nav/Comms Equipment

Radar(s):	2
Depth Sounder:	1
Cyro Compass:	3
Wind Seed Indicators:	3
Doppler Log:	1
Radio:	3 x VHF; 1 x SSB
Sat Com:	1XINMARSAT-C

Accommodations

No. of Berths:	28
Cabins:	2x1-man, 9x2-man & 2x4-man
Certified to Carry:	28
Galley seating:	14
Hospital:	Yes

Deck Equipment

Anchors (2):	2100 KG SPEK
Anchor Chain:	270 m of 40 mm chain per side
Windlass:	FUKUSHIMA 8.5T@9M/MIN
Crane (1):	2 t @ 10.1 m
Capstans (2):	5 t SEC
Tugger (2):	10 t FUKUSHIMA

*Approximate values assuming Ideal Conditions



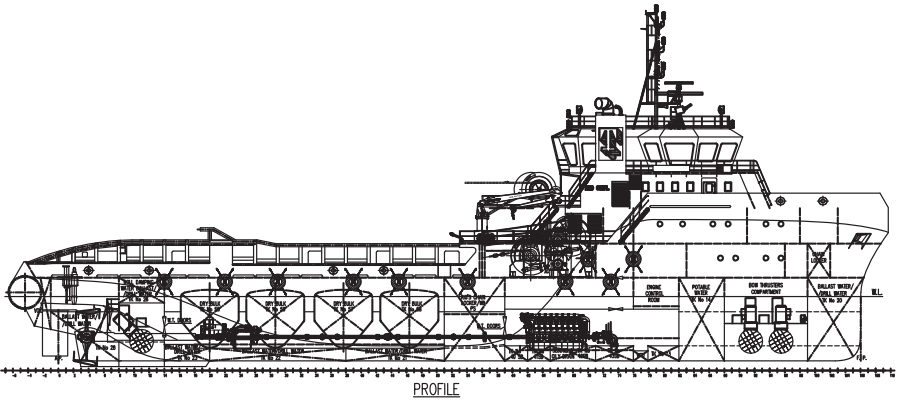
Registration

Flag: VANUATU	Home Port: PORT VILA	
Hull Number: 7413	IMO N ^o : 9476850	
Year Built: 2009	Call Sign: YJVU9	
Builder:	REMONTOWA	
Tonnage (ITC):	2301 GT	690 NT

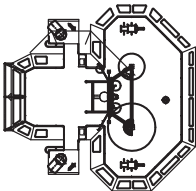
Special Equipment

Fire Fighting:	FiFi-1
Dynamic Positioning:	DP-2
Ref. Systems:	2 x MRU; 2 x DGPS 1 x Laser-based
Mud Circulation System/ Mud Mixers:	Yes/Yes
Tank Cleaning:	Yes
Rescue Boat:	SOLAS
Aux. Rescue Boat:	15 MAN FRC
Reefer Sockets:	4x 440V 32A
Misc:	MSD - 28 PERSON

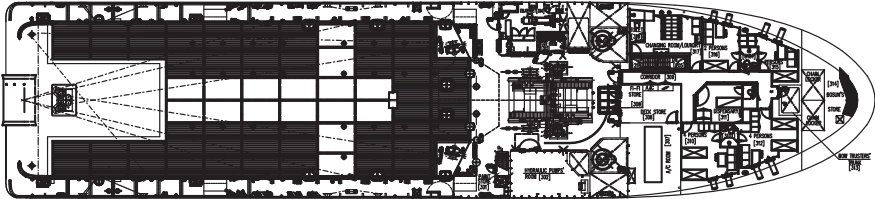
*Approximate values assuming Ideal Conditions



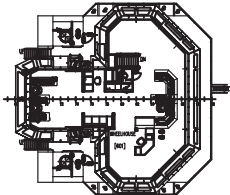
PROFILE



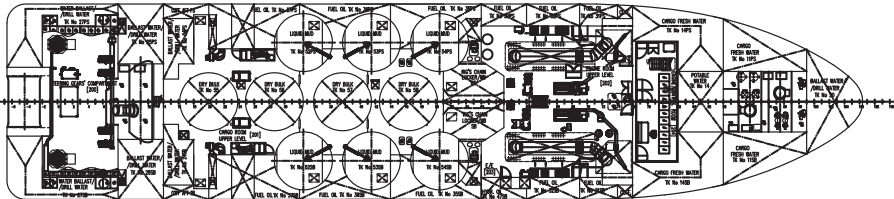
WHEELHOUSE TOP
19400 AB. BL.



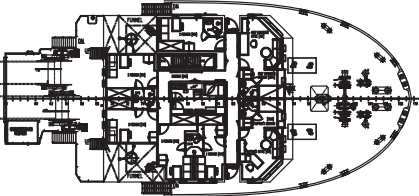
1st DECK
6000 AB. BL.



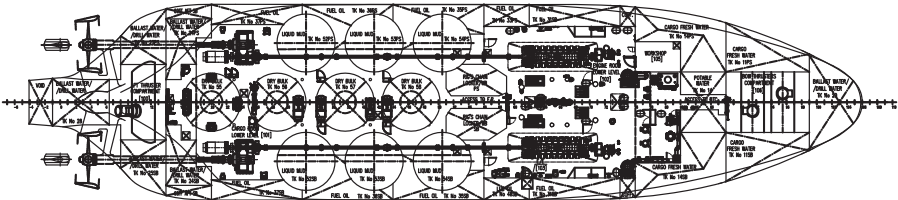
BRIDGE DECK
14000 AB. BL.



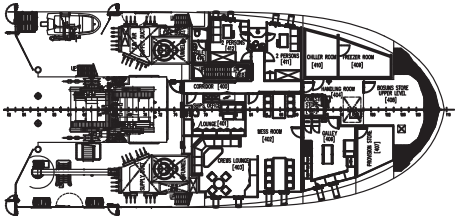
2nd DECK
3000/4100 AB. BL.



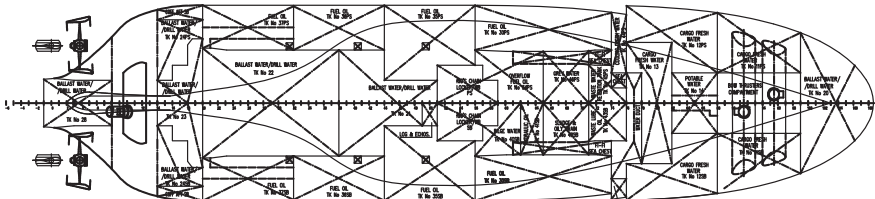
02 ACCOMMODATION DECK
12100 AB. BL.



TANK TOP
1000/1200/1300/1500 AB. BL.



01 ACCOMMODATION DECK
9300 AB. BL.



BELOW TANK TOP



Tank	Contents	Volume m ³	Base Oil	Fuel Oil	Dry Bulk	DW/WB	Potable Water	Fresh Water	Brine	Liquid Mud	Methanol	Lube Oil	Foam	Oil Disp.
TK 11 FW SB	FW	94.7						94.7						
TK 11 FW PS	FW	94.7						94.7						
TK 12 FW SB	FW	145.0						145.0						
TK 12 FW PS	FW	145.0						145.0						
TK 13 FW C	FW	30.4						30.4						
TK 14 FW C	Ship's FW	99.1					99.1							
TK 20 DW/WB C	DW/WB	134.2				134.2								
TK 21 DW/WB C	DW/WB	42.3				42.3								
TK 22 DW/WB C	DW/WB	84.9				84.9								
TK 23 DW/WB C	DW/WB	18.7				18.7								
TK 24 DW/WB SB	DW/WB	52.7				52.7								
TK 24 DW/WB PS	DW/WB	52.7				52.7								
TK 25 DW/WB SB	DW/WB	16.8				16.8								
TK 25 DW/WB PS	DW/WB	16.8				16.8								
TK 26 DW/WB C	DW/WB	108.8				108.8								
TK 27 DW/WB SB	DW/WB	38.4				38.4								
TK 27 DW/WB PS	DW/WB	38.4				38.4								
TK 28 DW/WB C	DW/WB	25.4				25.4								
CL SB	DW/WB/CL	78.4				78.4								
CL PS	DW/WB/CL	78.4				78.4								
TK 30 FO SB	FO	39.1		39.1										
TK 30 FO PS	FO	39.1		39.1										
TK 31 FO SB	FO	43.6		43.6										
TK 31 FO PS	FO	44.3		44.3										
TK 32 FO SERV SB	FO	18.7		18.7										
TK 32 FO SERV PS	FO	19.4		19.4										
TK 33 FO SETTLING PS	FO	33.6		33.6										
TK 34 FO OVERFLOW PS	FO	20.0		20.0										
TK 35 FO SB	FO	106.9		106.9										
TK 35 FO PS	FO	106.9		106.9										
TK 36 FO SB	FO	80.5		80.5										
TK 36 FO PS	FO	80.5		80.5										
TK 37 FO SB	FO	95.7		95.7										
TK 37 FO PS	FO	95.7		95.7										
TK 52 LM SB	LM	79.3								79.3				
TK 52 LM PS	LM	79.3								79.3				
TK 53 LM SB	LM	79.3								79.3				
TK 53 LM PS	LM	79.3								79.3				
TK 54 LM SB	LM	79.3								79.3				
TK 54 LM PS	LM	79.3								79.3				
TK 55 Dry Bulk	Dry Bulk	48.4			48.4									
TK 56 Dry Bulk	Dry Bulk	48.4			48.4									
TK 57 Dry Bulk	Dry Bulk	48.4			48.4									
TK 58 Dry Bulk	Dry Bulk	48.4			48.4									
Lube Oil Storage	LO	15.5										15.5		
Total Volume [m ³]			0.0	824.0	193.6	787.0	99.1	509.8	0.0	475.7	0.0	15.5	0.0	0.0
Spec Sheet Total Volume [m ³]			0.0	732.3	193.6	787.0	99.1	509.8	0.0	475.7	0.0	15.5	0.0	0.0

*Capacities shown are for lead vessel. Actual capacities may vary slightly.

*Capacities shown in **RED** are excluded from the total volume.

*Capacities shown in **BLUE** are included in another Tank's Capacity.

*Capacities shown in **GREEN** are counted for multiple Tank Capacities.

