



## UT 755 L PLATFORM SUPPLY VESSEL

### Vessel Characteristics

Length, Overall:	235.9 ft	71.9 m
Beam:	52.5 ft	16 m
Depth:	23 ft	7 m
Maximum Draft:	19 ft	5.8 m
Light Draft:	8.9 ft	2.7 m
Minimum Height:	86.7 ft	26.4 m
Freeboard:	3.6 ft	1.1 m
Displacement:	4,750 lt	4,820 mt
Deadweight:	2,890 lt	2,930 mt
Clear Deck Space:	153 x 44 ft	47 x 14 m
Clear Deck Area:	5,010 ft <sup>2</sup>	460 m <sup>2</sup>
Deck Strength AFT:	1,020 lb/ft <sup>2</sup>	5 t/m <sup>2</sup>
Class Notations:	ABS: A1, AMS, ACCU, DPS-2	

### Capacities

Deck Cargo:	720 lt	740 t
Fuel Oil:	275,000 gal	1,040 m <sup>3</sup>
Potable Water:	56,600 gal	210 m <sup>3</sup>
Fresh Water:	155,000 gal	590 m <sup>3</sup>
Drill/Ballast Water:	201,000 gal	760 m <sup>3</sup>
Bulk Tanks (4 tanks):	9,900 ft <sup>3</sup>	280 m <sup>3</sup>
Liquid Mud (2.5 SG*):	4,860 bbl	770 m <sup>3</sup>
*Max Structural Specific Gravity		
Base Oil:	1,320 bbl	210 m <sup>3</sup>

## TIDEWATER

Find out more

[tdw.com](http://tdw.com)

Pg.2 Further Specifications

Pg.4 Capacity Table

Pg.3 General Arrangement

# MCKENNY TIDE

## Further specifications



### Machinery

Main Engines (2):	Bergen Diesel KRM B9		
Total HP:	5,380		
Propellers (2):	CPP		
Primary Generators (2):	250 kw	440 v	60 hz
Driven by:	Diesel Engine		
Secondary Generators (2):	1,500 kw	440 v	60 hz
Driven by:	Main Engine		
Emergency Generators (1):	50 kw	440 v	60 hz
Bow Thruster (2):	1 x Tunnel, 1 x Dropdown		
Driven by:	790HP & 990HP Electric Motors		
Total Thrust:	22.3 st	20.2 mt	
Stern Thruster (1):	Ulstein 150 TV-B		
Driven by:	790HP Electric Motor		
Total Thrust:	9.9 st	9 mt	

### Deck Equipment

Anchors (2):	5423 LBS
Anchor Chain:	230 m of 38 mm chain per side
Windlass:	Ulstein Brattvaag
Crane (1):	40 t @ 9 m
Aux. Crane (1):	5 t @ 10 m
Capstans (2):	8 t ULSTEIN BRATTVAAG GM41
Tugger (2):	10 t ULSTEIN BRATTVAAG

### Accommodations

No. of Berths:	47
Cabins:	5x1-man, 17x2-man & 2x4-man
Certified to Carry:	47
Galley seating:	24
Hospital:	Yes

### Registration

Flag: VANUATU	Home Port: PORT VILA
Hull Number: 123	IMO N <sup>o</sup> : 9210921
Year Built: 1999	Call Sign: YJRR8
Builder:	SOVIKNES VERFT
Tonnage (ITC):	2186 GT 958 NT

### Performance\*

Fuel Consumption Vs Speed		
Maximum:	23 m³/day (250 gph) @ 14.5 knots	
Cruising:	14 m³/day (150 gph) @ 12 knots	
Economical:	12 m³/day (130 gph) @ 10 knots	
Standby:	0.8 m³/day (9 gph) @ 0 knots	
Range @ 12 Knots:	21,400 nm	
Transfer Rates		
Fuel Oil:	880 gpm @ 300 ft	200 m³/h @ 92 m
Fresh Water:	880 gpm @ 300 ft	200 m³/h @ 92 m
Drill/Ballast Water:	660 gpm @ 300 ft	150 m³/h @ 92 m
Bulk:	41 cfm @ 190 ft	69.6 m³/h @ 57 m
Liquid Mud:	330 gpm @ 600 ft	75 m³/h @ 180 m
Base Oil:	660 gpm @ 300 ft	150 m³/h @ 92 m

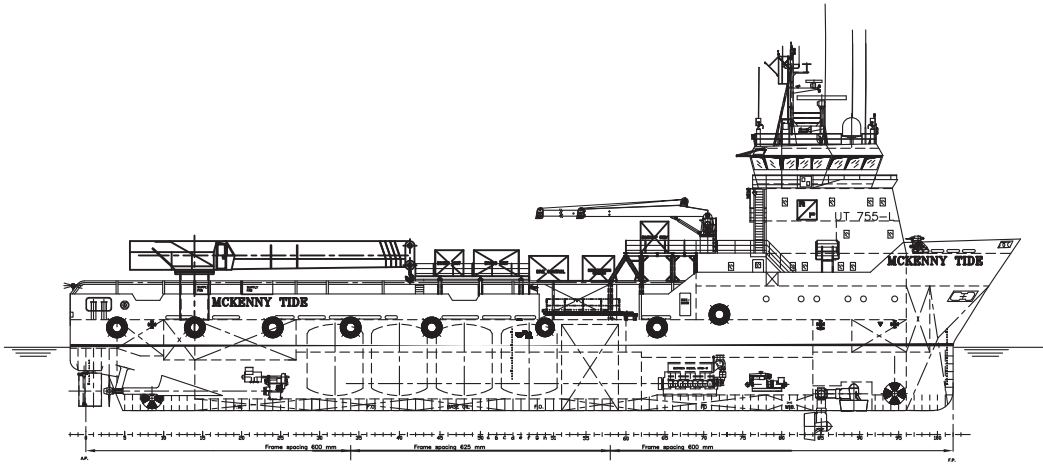
### Nav/Comms Equipment

Radar(s):	2
Depth Sounder:	1
Gyro Compass:	3
Wind Speed Indicators:	2
Doppler Log:	1
Radio:	2 x VHF; 1 x SSB

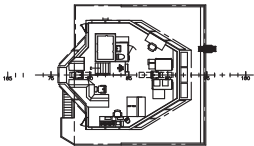
### Special Equipment

Dynamic Positioning:	DP-2
Ref. Systems:	2 x MRU; 2 x DGPS
Mud Circulation System/ Mud Mixers:	Yes/Yes
Rescue Boat:	6-man Norsafe 5m Midget MKII
Misc:	Moon Pool 4.3m x 3.8m; *Spec sheet reflects configuration as a Dive Support Vessel.

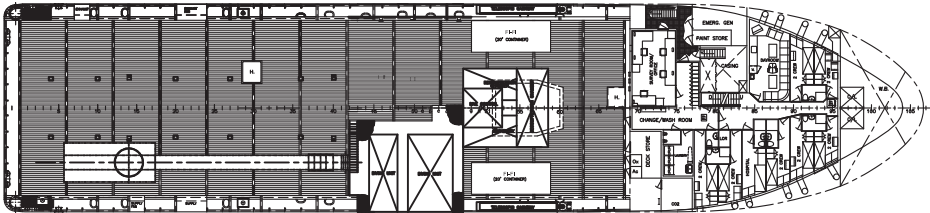
\*Approximate values assuming Ideal Conditions



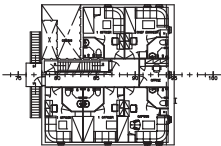
PROFILE



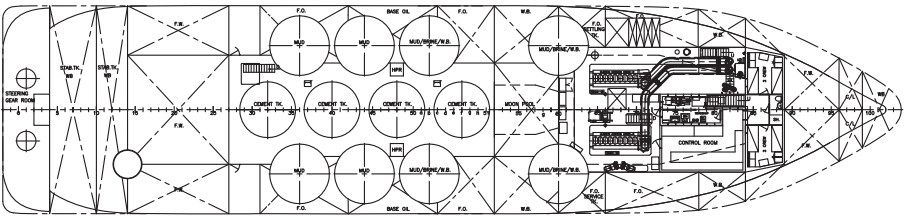
BRIDGE DECK



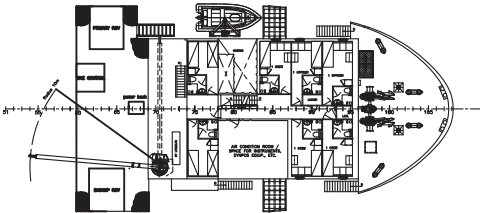
MAIN DECK



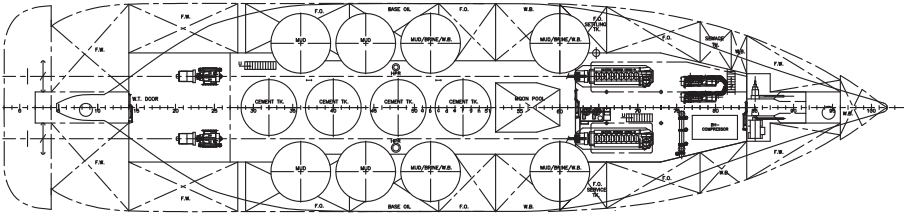
B-DECK



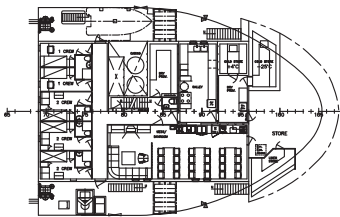
TWEEN DECK



A-DECK



TANK TOP



FORECASTLE DECK



## Capacity Table



\*Capacities shown in **GREEN** are counted for multiple Tank Capacities.