



VRANA TIDE as shown, O'ROURKE TIDE similar

100T BP AZIMUTHING STERN DRIVE TUG

Vessel Characteristics

Length, Overall:	167.3 ft	51 m
Beam:	49.2 ft	15 m
Depth:	21.3 ft	6.5 m
Maximum Draft:	23 ft	7 m
Minimum Height:	72.8 ft	22.2 m
Freeboard:	2.6 ft	0.8 m
Displacement:	2,650 lt	2,690 mt
Deadweight:	1,230 lt	1,240 mt
Clear Deck Space:	65 x 38 ft	20 x 12 m
Clear Deck Area:	2,510 ft ²	230 m ²
Deck Strength:	1,020 lb/ft ²	5 t/m ²
Class Notations:	ABS: +A1, (E), +AMS, TOWING VESSEL, OSV AH, FIFI-1	

Capacities

Deck Cargo:	200 lt	200 t
Fuel Oil:	206,000 gal	780 m ³
Potable Water:	42,800 gal	160 m ³
Drill/Ballast Water:	84,400 gal	320 m ³
Oil Dispersant:	2,110 gal	8 m ³
Fire Fighting Foam:	2,110 gal	8 m ³

TIDEWATER

Find out more

tdw.com

Pg.2 Further Specifications

Pg.4 Capacity Table

Pg.3 General Arrangement



Machinery

Main Engines (2):	GE 16V228/7FDM16		
Total HP:	7,820		
Z-Drives:	Yes		
Propellers (2):	CCP-Z Drive		
Kort Nozzles:	2		
Primary Generators (3):	420 kw	440 v	60 hz
Driven by:	CAT C18		
Emergency Generators (1):	72 kw	440 v	60 hz
Driven by:	CAT C4.4		
Bow Thruster (1):	Tunnel		
Driven by:	Electric Motor (325kW)		
Total Thrust:	6.2 st	5.6 mt	

Performance*

Fuel Consumption Vs Speed		
Maximum:	16.9 m³/day (190 gph) @ 14 knots	
Cruising:	13.6 m³/day (150 gph) @ 11 knots	
Economical:	8 m³/day (88.1 gph) @ 8 knots	
Range @ 12 Knots:	9,000 nm	
Bollard Pull	120 st	110 mt
Transfer Rates		
Fuel Oil:	440 gpm @ 170 ft	100 m³/h @ 51 m
Potable Water:	310 gpm @ 160 ft	70 m³/h @ 50 m

Deck Equipment

Anchors (2):	3174 lbs.	
Anchor Chain:	270 m of 38 mm chain per side	
Windlass:	Single Drum 8t@10m/min	
Crane (1):	1.8 t @ 14 m	
Capstans (2):	5 t Electric-Hydraulic	
Tugger (2):	10 t ELECTRIC-HYDRULIC	

Registration

Flag: VANUATU	Home Port: PORT VILA	
Hull Number: 3097	IMO N ^o : 9556375	
Year Built: 2009	Call Sign: YJVN4	
Builder:	YUEXIN SHIPBUILDING	
Tonnage (ITC):	1370 GT	411 NT

Tow/Anchor Handling

Winch:	MacGregor Double-Drum Waterfall
Model:	PC-AHTW/WF-150/250
Line Pull:	150 mt
Tow Wire/Work Wire:	1000 m of 64 mm
Shark Jaw:	(2 SETS) 300T SWL
Tow Pins:	(2) 160T SWL
Stern Roller:	16.27 FT. X 6.5 FT. SWL; 350 mt SWL
Misc. Towing Equipment:	Bow Winch - Brake: 250t; Line Pull: 75t; 350m of 64mm

Nav/Comms Equipment

Radar(s):	2
Depth Sounder:	1
Cyro Compass:	2
Wind Speed Indicator:	1
Doppler Log:	1
Radio:	2 x VHF; 1 x SSB
Sat Com:	INMARSAT C

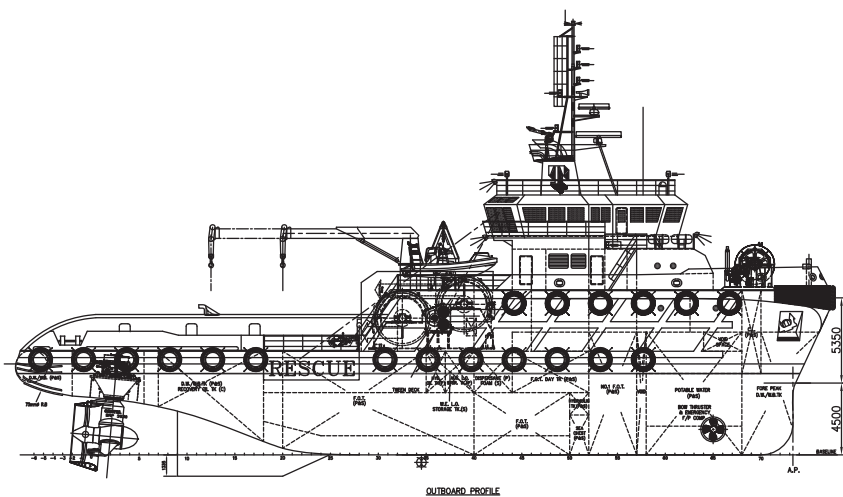
Accommodations

No. of Berths:	20
Cabins:	2x1-man, 3x2-man & 3x4-man
Certified to Carry:	20
Galley seating:	20
Hospital:	Yes

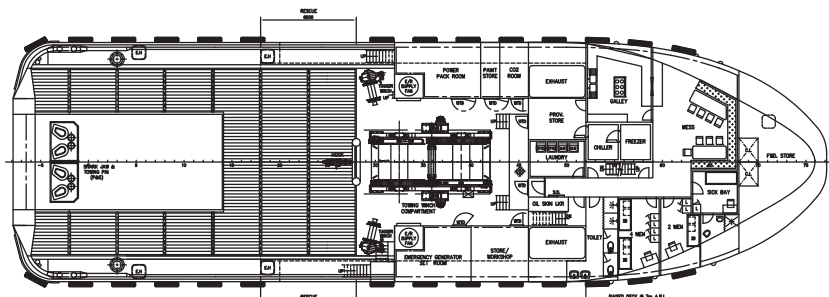
Special Equipment

Firefighting:	FiFi-1
Oil Dispersant Equipment:	2 x 5m Dispersant Booms
Rescue Zone:	Yes
Rescue Boat:	Solas Approved
Aux. Rescue Boat:	FAST RESUE BOAT
Fuel Monitoring:	FUELTRAX
Misc:	ORO - 125 m3; MSD - 25 Persons/Day; Towing Hook

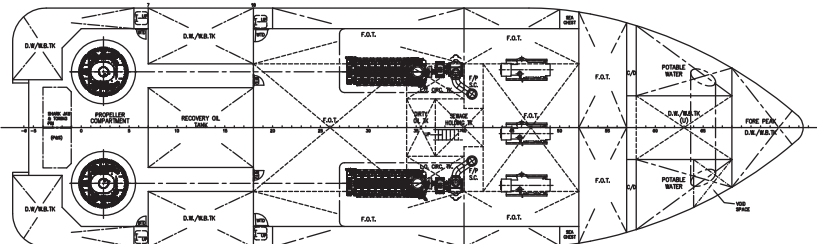
*Approximate values assuming Ideal Conditions



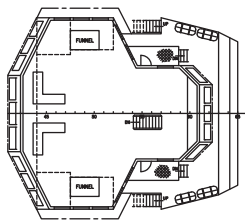
OUTBOARD PROFILE



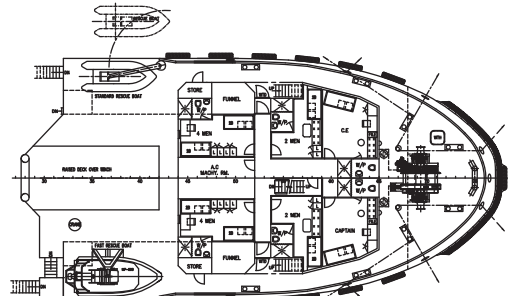
MAIN DECK



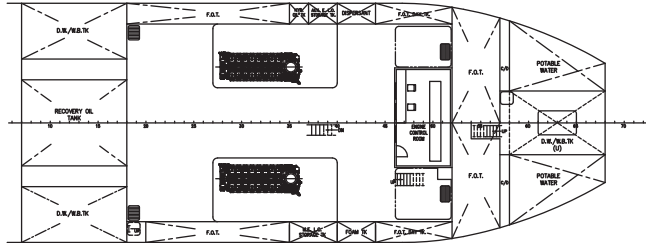
BELOW MAIN DECK



WHEELHOUSE DECK



FORECASTLE DECK



TWEEN DECK (3.9m A.B.L.)



Tank	Contents	Volume m ³	Base Oil	Fuel Oil	Dry Bulk	DW/WB	Potable Water	Fresh Water	Brine	Liquid Mud	Methanol	Lube Oil	Foam	Oil Disp.
FP DW/WB Tank (C)	DW/WB	65.4				65.4								
No. 1 DW/WB TK (P)	DW/WB	40.5				40.5								
No. 1 DW/WB TK (S)	DW/WB	40.5				40.5								
No. 2 DW/WB TK (P)	DW/WB	69.8				69.8								
No. 2 DW/WB TK (S)	DW/WB	69.8				69.8								
No. 3 DW/WB TK (C)	DW/WB	33.5				33.5								
No. 1 PW Tank (P)	Ship's FW	81.0					81.0							
No. 1 PW Tank (S)	Ship's FW	81.0					81.0							
ORO Tank (C)	ORO/FO	123.4		123.4										
No. 1 FO Tank (P)	FO	135.1		135.1										
No. 1 FO Tank (S)	FO	135.1		135.1										
No. 2 FO Tank (P)	FO	30.4		30.4										
No. 2 FO Tank (S)	FO	30.4		30.4										
No. 2 FO Tank (C)	FO	51.6		51.6										
No. 3 FO Tank (P)	FO	93.7		93.7										
No. 3 FO Tank (S)	FO	93.7		93.7										
No. 3 FO Tank (C)	FO	85.2		85.2										
Day Tank (P)	FO	15.3		15.3										
Day Tank (S)	FO	15.3		15.3										
Foam Tk	Foam	8.0											8.0	
Detergent	Disp	8.0												8.0
Aux LO Store (P)	LO	6.0										6.0		
ME LO Store (S)	LO	10.0										10.0		
Total Volume [m ³]			0.0	809.2	0.0	319.5	162.0	0.0	0.0	0.0	0.0	16.0	8.0	8.0
Spec Sheet Total Volume [m ³]			0.0	778.6	0.0	319.5	162.0	0.0	0.0	0.0	0.0	16.0	8.0	8.0

*Capacities shown are for lead vessel. Actual capacities may vary slightly.

*Capacities shown in **RED** are excluded from the total volume.

*Capacities shown in **BLUE** are included in another Tank's Capacity.

*Capacities shown in **GREEN** are counted for multiple Tank Capacities.