



LEIBE TIDE as shown, ORTALANO TIDE similar

## LABROY 63M ANCHOR HANDLING TOWING SUPPLY VESSEL

### Vessel Characteristics

Length, Overall:	206.7 ft	63 m
Beam:	49.2 ft	15 m
Depth:	20 ft	6.1 m
Maximum Draft:	17.1 ft	5.2 m
Minimum Height:	75.1 ft	22.9 m
Freeboard:	3 ft	0.9 m
Displacement:	3,290 lt	3,340 mt
Deadweight:	1,600 lt	1,630 mt
Clear Deck Space:	100 x 40 ft	31 x 12 m
Clear Deck Area:	3,980 ft <sup>2</sup>	370 m <sup>2</sup>
Deck Strength AFT:	1,540 lb/ft <sup>2</sup>	7.5 t/m <sup>2</sup>
Class Notations:	ABS: +A1, FFV-1, (E), +AMS, +ACCU, +DPS-2, TOWING VESSEL, OSV	

### Capacities

Deck Cargo:	590 lt	600 t
Fuel Oil:	150,000 gal	570 m <sup>3</sup>
Potable Water:	45,400 gal	170 m <sup>3</sup>
Fresh Water:	74,600 gal	280 m <sup>3</sup>
Drill/Ballast Water:	108,000 gal	410 m <sup>3</sup>
Bulk Tanks (4 tanks):	6,000 ft <sup>3</sup>	170 m <sup>3</sup>
Liquid Mud (2.5 SG*):	2,570 bbl	410 m <sup>3</sup>
*Max Structural Specific Gravity		
Oil Dispersant:	3,570 gal	13.5 m <sup>3</sup>
Fire Fighting Foam:	2,150 gal	8.1 m <sup>3</sup>

## TIDEWATER

Find out more

[tdw.com](http://tdw.com)

Pg.2 Further Specifications  
Pg.4 General Arrangement

Pg.5 Capacity Table  
Pg.6 DP Capability Plot

# ORTALANO TIDE

## Further specifications



### Machinery

Main Engines (2):	MAK 8M 25		
Total HP:	7,080		
Propellers (2):	2.8 m DIA CPP 4 BLADE		
Gears (2):	ULSTEIN 600 AGHC-KP500ND 3.87:1		
Kort Nozzles:	2		
Rudders (2):	HIGHLIFT FLAP TYPE		
Primary Generators (2):	370 kw	440 v	60 hz
Driven by:	CAT 3408		
Secondary Generators (2):	1,200 kw	440 v	60 hz
Driven by:	MAIN ENGINES		
Emergency Generators (1):	94 kw	440 v	60 hz
Driven by:	CAT C4.4		
Bow Thruster (2):	KAWASAKI KT-55B3 TUNNEL		
Driven by:	400 KW ELECTRIC MOTOR		
Total Thrust:	13.5 st	12.2 mt	
Stern Thruster (1):	KAWASAKI KT-55B3 TUNNEL		
Driven by:	400 KW ELECTRIC MOTOR		
Total Thrust:	6.7 st	6.1 mt	

### Performance\*

Fuel Consumption Vs Speed		
Maximum:	24.5 m³/day (270 gph) @ 13.5 knots	
Cruising:	10.5 m³/day (120 gph) @ 10 knots	
Economical:	7.6 m³/day (83.7 gph) @ 8 knots	
Standby:	1.9 m³/day (21 gph) @ 0 knots	
Range @ 10 Knots:	13,000 nm	
Bollard Pull	92.6 st	84 mt
Transfer Rates		
Fuel Oil:	550 gpm @ 250 ft	120 m³/h @ 75 m
Fresh Water:	550 gpm @ 250 ft	120 m³/h @ 75 m
Drill/Ballast Water:	550 gpm @ 250 ft	120 m³/h @ 75 m
Bulk:	25 cfm @ 190 ft	42.4 m³/h @ 57 m
Liquid Mud:	440 gpm @ 260 ft	100 m³/h @ 80 m

### Tow/Anchor Handling

Winch:	RR - BRATTVAAG (250T BRAKE)
Model:	SL 200WX-B2T
Line Pull:	200 mt
Tow/AH Wire:	1,400 m / 1,400 m of 58 mm
Pennant Reels (1):	1,500 m of 58 mm
Shark Jaw:	KARM FORK 200 MT SWL
Tow Pins:	KARMOY 200 MT SWL
Chain Handler:	1 X 76MM, 1 X 81MM
Stern Roller:	RR - 16.4FT X 6FT DIA; 200 mt SWL

### Nav/Comms Equipment

Radar(s):	2
Depth Sounder:	1
Cyro Compass:	2
Wind Seed Indicators:	2
Doppler Log:	1
Radio:	2 x VHF; 1 x SSB
Sat Com:	INMARSAT-C

### Accommodations

No. of Berths:	32
Cabins:	4x1-man, 6x2-man & 4x4-man
Certified to Carry:	32
Galley seating:	24
Hospital:	Yes

### Deck Equipment

Anchors (2):	3836 lbs HHP
Anchor Chain:	410 m of 38 mm chain per side
Windlass:	RR - BRATTVAAG 8 MT 14M/MIN
Crane (1):	3 t @ 15 m
Capstans (2):	5.2 t RR - BRATTVAAG (19m/min)
Tugger (2):	12 t RR - BRATTVAAG (24M/MIN)

\*Approximate values assuming Ideal Conditions



Registration

Flag: VANUATU	Home Port: PORT VILA	
Hull Number: 174	IMO N <sup>o</sup> : 9443982	
Year Built: 2009	Call Sign: YJVK6	
Builder:	LABROY SHIPBUILDING & ENG	
Tonnage (ITC):	1815 GT	544 NT

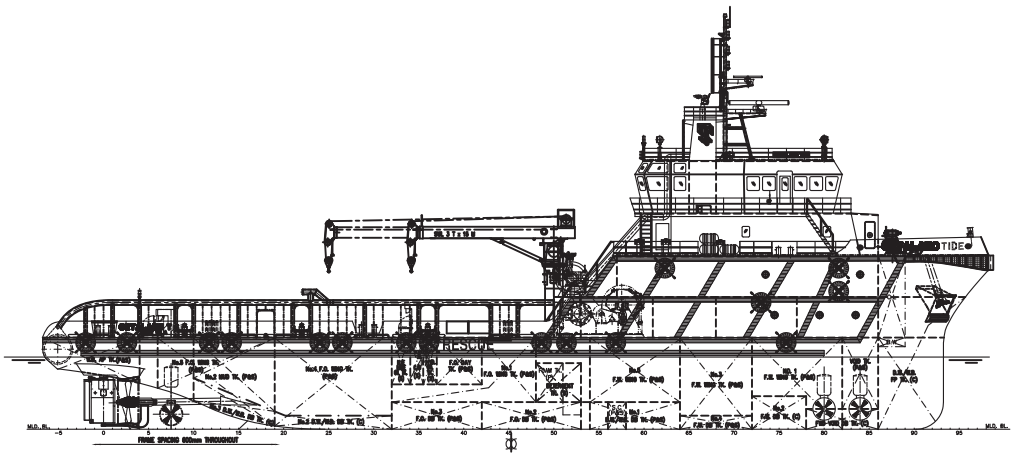
Special Equipment

Fire Fighting:	FiFi-1
Dynamic Positioning:	DP-2
Ref. Systems:	2 x MRU; 2 x DGPS 1 x Laser-based
Water Maker:	1X10 T/DAY
Mud Circulation System:	Yes
Rescue Zone:	Yes
Rescue Boat:	6 MAN MOB
Reefer Sockets:	4x 440V 32A
Misc:	1xAIS; MSD - 40 Persons

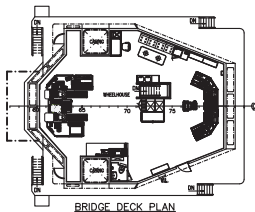
\*Approximate values assuming Ideal Conditions

ORTALANO TIDE

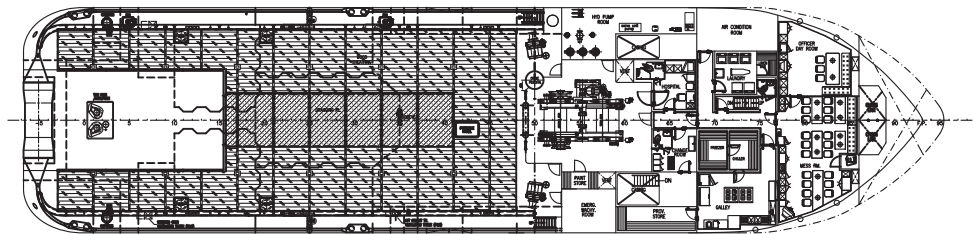
General Arrangement (Current configuration may vary.)



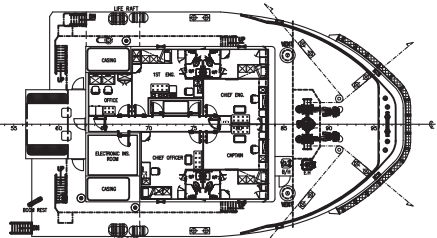
OUTBOARD PROFILE



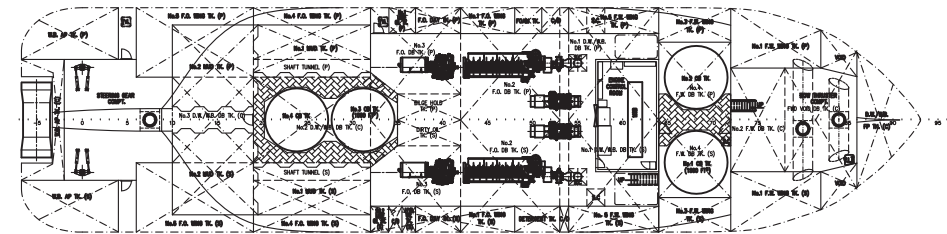
BRIDGE DECK PLAN



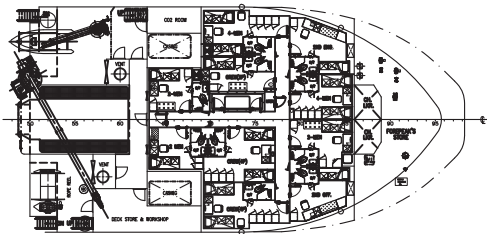
MAIN DECK PLAN



UPPER FORECASTLE DECK



BELOW DECK PLAN



FORECASTLE DECK



Tank	Contents	Volume m <sup>3</sup>	Base Oil	Fuel Oil	Dry Bulk	DW/WB	Potable Water	Fresh Water	Brine	Liquid Mud	Methanol	Lube Oil	Foam	Oil Disp.
WB AP P	DW/WB	22.0				22.0								
WB AP S	DW/WB	22.0				22.0								
WB AP C	DW/WB	19.7				19.7								
FP WB TANK	DW/WB	149.2				149.2								
No. 1 DW/WB DB P	DW/WB	65.4				65.4								
No. 1 DW/WB DW DB S	DW/WB	65.7				65.7								
No. 2 DW/WB DW DB C	DW/WB	35.8				35.8								
No. 3 DW/WB DW DB C	DW/WB	30.9				30.9								
No. 1 FW Wg Tk P	Ship's FW	85.9					85.9							
No. 1 FW Wg Tk S	Ship's FW	85.9					85.9							
No. 2 FW DB Tk C	FW	53.1						53.1						
No. 3 FW Wg Tk P	FW	50.4						50.4						
No. 3 FW Wg Tk S	FW	50.4						50.4						
No. 4 FW DB Tk P	FW	20.4						20.4						
No. 4 FW DB Tk S	FW	20.2						20.2						
No. 5 FW Wg Tk P	FW	44.0						44.0						
No. 5 FW Wg Tk S	FW	44.0						44.0						
No. 1 FO Wg Tk P	FO	36.8		36.8										
No. 1 FO Wg Tk S	FO	39.3		39.3										
No. 2 FO DB P	FO	68.3		68.3										
No. 2 FO DB S	FO	70.0		70.0										
No. 3 FO DB P	FO	51.8		51.8										
No. 3 FO DB S	FO	51.8		51.8										
No. 4 FO Wg Tk P	FO	62.4		62.4										
No. 4 FO Wg Tk S	FO	62.4		62.4										
No. 5 FO Wg Tk P	FO	62.8		62.8										
No. 5 FO Wg Tk S	FO	62.8		62.8										
FO DAY Tk P	FO	16.1		16.1										
FO DAY Tk S	FO	16.1		16.1										
No. 1 Mud P	LM	105.3								105.3				
No. 1 Mud S	LM	107.2								107.2				
No. 2 Mud P	LM	98.2								98.2				
No. 2 Mud S	LM	98.2								98.2				
Dispersant Tk S	DISP	13.5												13.5
Foam Tk P	FOAM	8.1											8.1	
Lube Oil Tk P	LO	9.7										9.7		
M/E LO Tk P	LO	6.4										6.4		
Lube Oil Storage Tk S	LO	4.8										4.8		
CEM Tk 1 P	Dry Bulk	42.5			42.5									
CEM Tk 2 S	Dry Bulk	42.5			42.5									
CEM Tk 3 C	Dry Bulk	42.5			42.5									
CEM Tk 4 C	Dry Bulk	42.5			42.5									
Total Volume [m <sup>3</sup> ]			0.0	600.5	170.0	410.7	171.7	282.4	0.0	408.9	0.0	20.9	8.1	13.5
Spec Sheet Total Volume [m <sup>3</sup> ]			0.0	568.2	170.0	410.7	171.7	282.4	0.0	408.9	0.0	20.9	8.1	13.5

\*Capacities shown are for lead vessel. Actual capacities may vary slightly.

\*Capacities shown in **RED** are excluded from the total volume.

\*Capacities shown in **BLUE** are included in another Tank's Capacity.

\*Capacities shown in **GREEN** are counted for multiple Tank Capacities.

# ORTALANO TIDE

## DP Capability Plot

