

# TROMS POLLUX



TROMS CASTOR as shown, TROMS POLLUX similar

## VS 485 CD PLATFORM SUPPLY VESSEL

### Vessel Characteristics

Length, Overall:	278.9 ft	85 m
Beam:	65.6 ft	20 m
Depth:	28.2 ft	8.6 m
Maximum Draft:	23.6 ft	7.2 m
Light Draft:	10.5 ft	3.2 m
Minimum Height:	95.8 ft	29.2 m
Freeboard:	4.6 ft	1.4 m
Displacement:	8,420 lt	8,560 mt
Deadweight:	5,370 lt	5,460 mt
Clear Deck Space:	197 x 55 ft	60 x 17 m
Clear Deck Area:	10,700 ft <sup>2</sup>	1000 m <sup>2</sup>
Deck Strength AFT:	2,050 lb/ft <sup>2</sup>	10 t/m <sup>2</sup>
Class Notations:	DNV: +1A1, ICE-C, OILREC, SF, LFL*, COMF-V(3) C(3), HL(2.8), STANDBY VESSEL(S), EO, DYN-POS-AUTR, NAUT-OSV(A), CLEAN DESIGN, DK(+), NOFO2009	

### Capacities

Deck Cargo:	2,810 lt	2,860 t
Fuel Oil:	211,000 gal	800 m <sup>3</sup>
Potable Water:	96,100 gal	360 m <sup>3</sup>
Fresh Water:	152,000 gal	570 m <sup>3</sup>
Drill/Ballast Water:	652,000 gal	2,470 m <sup>3</sup>
Bulk Tanks (8 tanks):	15,500 ft <sup>3</sup>	440 m <sup>3</sup>
Liquid Mud (2.8 SG*):	4,420 bbl	700 m <sup>3</sup>
*Max Structural Specific Gravity		
Methanol:	1,830 bbl	290 m <sup>3</sup>
Base Oil:	1,280 bbl	200 m <sup>3</sup>
Brine:	2,630 bbl	420 m <sup>3</sup>
Oil Dispersant:	9,090 gal	34.4 m <sup>3</sup>

## TIDEWATER

Find out more

[tdw.com](http://tdw.com)

Pg.2 Further Specifications

Pg.4 Capacity Table

Pg.3 General Arrangement

Pg.5 DP Capability Plot

**NOTICE:** The data contained herein is provided for convenience of reference to allow users to determine the suitability of the Company's equipment. The data may vary from the current condition of equipment which can only be determined by physical inspection. Company has exercised due diligence to insure that the data contained herein is reasonably accurate. However, Company does not warrant the accuracy or completeness of the data. In no event shall Company be liable for any damages whatsoever arising out of the use or inability to use the data contained herein.

LAST UPDATE: 11/27/2023

# TROMS POLLUX

## Further specifications



### Machinery

Diesel Electric Vessel			
Propulsive/Total HP:	6,170 / 9,790		
Z-Drives:	Yes		
Propellers (2):	Steerprop SP-35 2300KW		
Primary Generators (4):	1,820 kw	690 v	60 hz
Driven by:	CAT 3516 BTA		
Emergency Generators (1):	180 kw	690 v	60 hz
Driven by:	Volvo Penta D9A UCM274H-1		
Bow Thruster (3):	2xBrunvoll FU-80LTA-2000 TT, 1xAR-63-LNA-1650 DD		
Driven by:	2x1000kW Electric Motors, 1x880kW Electric Motor		
Total Thrust:	48.3 st	43.8 mt	

### Deck Equipment

Anchors (2):	3540KG
Anchor Chain:	260 m of 46 mm chain per side
Windlass:	NDM AW46K3
Crane (1):	3 t @ 11.6 m
Aux. Crane (1):	3 t @ 7 m
Capstans (2):	8 t NDM C-8
Tugger (2):	15 t NDM TU-15

### Accommodations

No. of Berths:	23
Cabins:	13x1-man & 5x2-man
Certified to Carry:	23
Galley seating:	12
Hospital:	Yes

### Registration

Flag: NORWAY	Home Port: TROMS Ø
Hull Number: 145	IMO N <sup>o</sup> : 9439022
Year Built: 2009	Call Sign: LAZR
Builder:	HELLESOY VERFT
Tonnage (ITC):	4366 GT 1813 NT

### Performance\*

Fuel Consumption Vs Speed		
Maximum:	23.9 m³/day (260 gph) @ 15 knots	
Cruising:	15.9 m³/day (180 gph) @ 12 knots	
Economical:	11.8 m³/day (130 gph) @ 11 knots	
Standby:	3.6 m³/day (40 gph) @ 0 knots	
Range @ 11 Knots:	18,000 nm	
Transfer Rates		
Fuel Oil:	660 gpm @ 300 ft	150 m³/h @ 92 m
Fresh Water:	660 gpm @ 300 ft	150 m³/h @ 92 m
Drill/Ballast Water:	660 gpm @ 300 ft	150 m³/h @ 92 m
Bulk:	32.4 cfm @ 220 ft	55 m³/h @ 66 m
Liquid Mud:	440 gpm @ 800 ft	100 m³/h @ 240 m
Base Oil:	440 gpm @ 300 ft	100 m³/h @ 92 m
Brine:	660 gpm @ 300 ft	150 m³/h @ 92 m
Methanol:	330 gpm @ 240 ft	75 m³/h @ 73 m

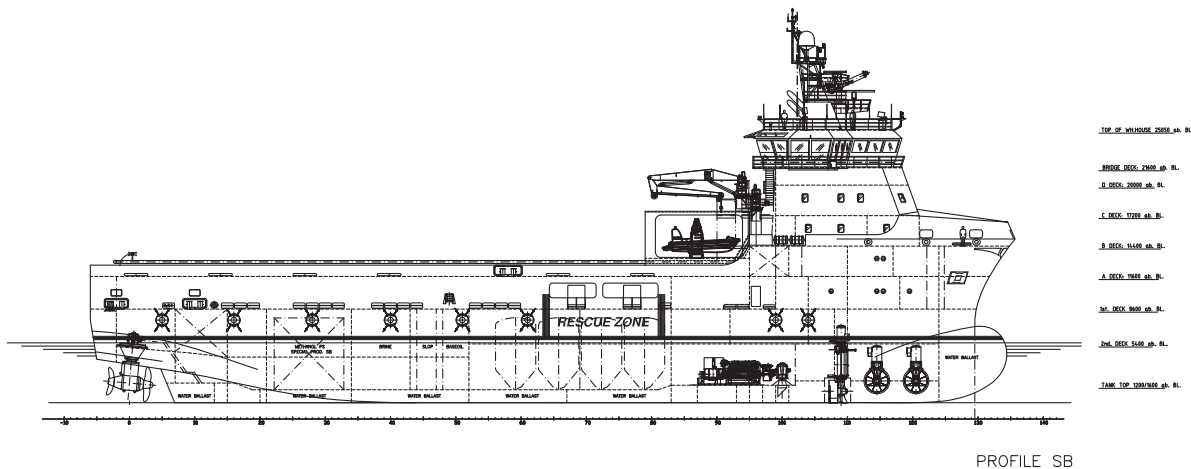
### Nav/Comms Equipment

Radar(s):	2
Depth Sounder:	1
Gyro Compass:	3
Wind Speed Indicators:	2
Radio:	4 x VHF

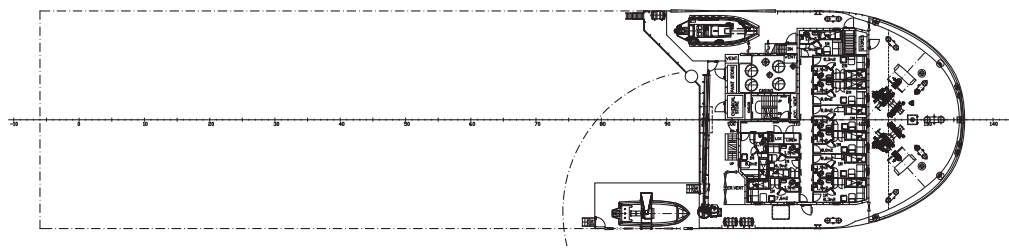
### Special Equipment

Dynamic Positioning:	DP-2
Ref. Systems:	2 x MRU; 2 x DGPS 1 x Microwave-based; 1 x Laser-based
Mud Mixers:	Yes
Tank Cleaning:	Yes
Rescue Zone:	Yes
Rescue Boat:	1xNOREQ FRB-650
Aux. Rescue Boat:	1XNORSafe 655 MAKO JET
Misc:	ERN - 99,99,99,56; DACon RESCUE SCOOP; OIL DETECTION RADAR+CAMERA; ORO Capa- ble - 1803.4m³; Mud Slop - 186.8m³; Shore Power Connection: 2x350A; Polar Code Compliant

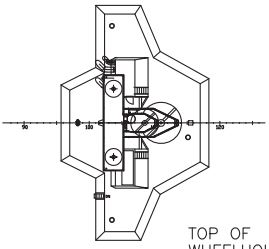
\*Approximate values assuming Ideal Conditions



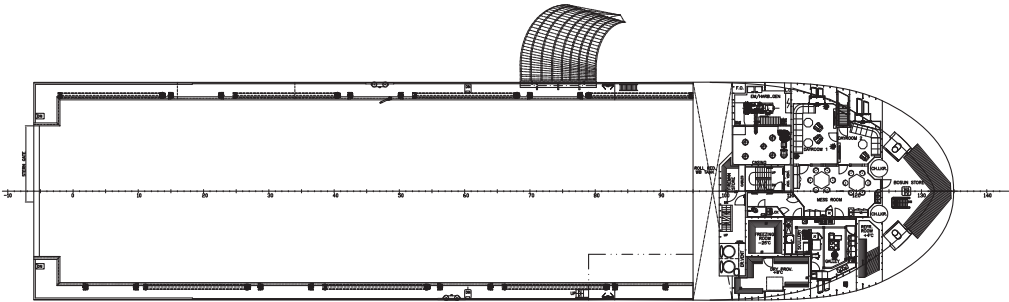
PROFILE SB



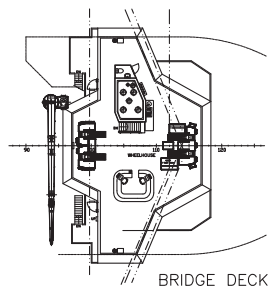
B-DECK



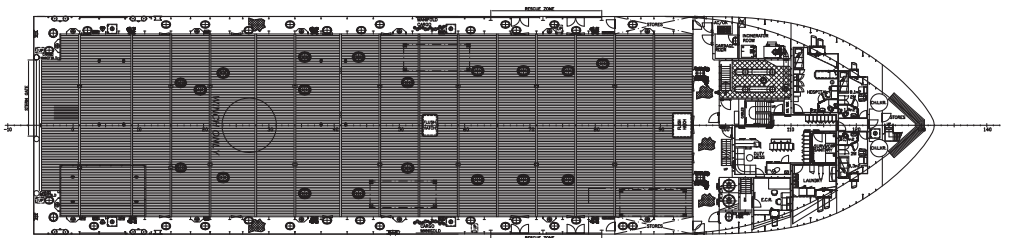
TOP OF WHEELHOUSE



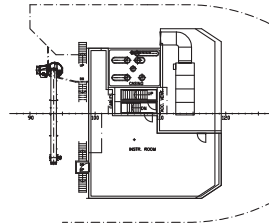
A-DECK



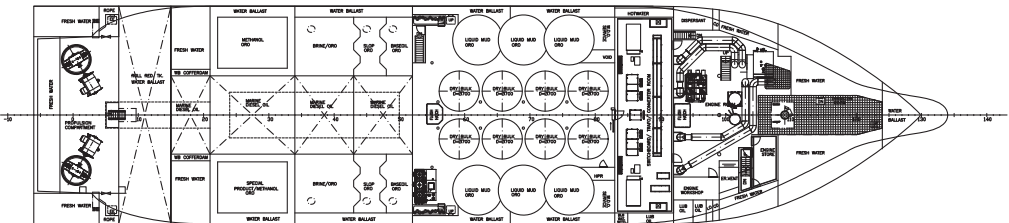
BRIDGE DECK



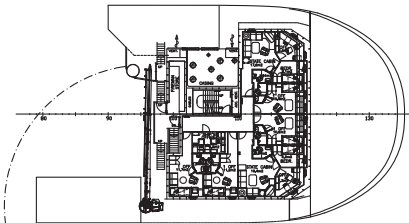
1st DECK



D-DECK



2nd DECK



C-DECK



Tank	Contents	Volume m <sup>3</sup>	Base Oil	Fuel Oil	Dry Bulk	DW/WB	Potable Water	Fresh Water	Brine	Liquid Mud	Methanol	Lube Oil	Foam	Oil Disp.
01.C FP WB/DW TK	DW/WB	110.3				110.3								
201.P DB WB/DW TK	DW/WB	65.0				65.0								
202.S DB WB/DW TK	DW/WB	65.0				65.0								
203.P DB WB/DW TK	DW/WB	72.4				72.4								
204.S DB WB/DW TK	DW/WB	72.4				72.4								
231.C Roll Red. TK	DW/WB	159.6				159.6								
31.P L-Tank PS	DW/WB	138.7				138.7								
32.S L-Tank SB	DW/WB	132.7				132.7								
33.P L-Tank PS	DW/WB	135.7				135.7								
34.S L-Tank SB	DW/WB	135.7				135.7								
402.C DB WB/DW TK	DW/WB	90.5				90.5								
41.P L-Tank PS	DW/WB	154.9				154.9								
42.S L-Tank SB	DW/WB	154.9				154.9								
501.C Skeg TK	DW/WB	109.3				109.3								
51.P WB Cofferdam TK	DW/WB	190.7				190.7								
52.S WB Cofferdam TK	DW/WB	190.7				190.7								
64.C Roll Red. TK	DW/WB	439.9				439.9								
73.C AP DB TK	DW/WB	51.9				51.9								
11.P FW Deep Tk	Ships FW	164.6					164.6							
12.S FW Deep Tk	Ships FW	164.4					164.4							
21.P FW Wing TK	FW	52.2						52.2						
22.S FW Wing TK	Ships FW	51.7					51.7							
301.C FW DB TK	FW	84.3						84.3						
302.C FW DP TK	FW	76.6						76.6						
61.P FW Deep TK	FW	110.5						110.5						
62.S FW Deep TK	FW	110.5						110.5						
71.P FW Aft WG TK	FW	36.8						36.8						
72.S FW Aft WG TK	FW	35.0						35.0						
74.C FW Stern TK	FW	120.6						120.6						
216.P FO TK	FO	3.3		3.3										
217.P FO TK	FO	1.2		1.2										
321.P FO SETT. TK 1	FO	22.3		22.3										
322.S FO SETT. TK 2	FO	24.2		24.2										
323.P Service TK 1	FO	18.7		18.7										
324.S Service TK 2	FO	19.8		19.8										
410.C Overflow TK	FO	65.7		65.7										
411.C FO Deep TK	FO	168.5		168.5										
412.C FO Deep TK	FO	168.5		168.5										
510.C FO Deep TK	FO	297.1		297.1										
63.C FO Deep TK	FO	112.3		112.3										
521.P Meth/ORO Tk	METH/ORO	145.5									145.5			
421.P Base Oil/ORO Tk	BO/ORO	101.9	101.9											
422.P Base Oil/ORO Tk	BO/ORO	101.9	101.9											
425.P Brine/ORO TK	BR/ORO	209							209.0					
426.S Brine/ORO TK	BR/ORO	209							209.0					
522.S Spec. Prod./ORO	SP/ORO	146.3									146.3			
325.P LM/ORO TK	LM/ORO	119.5								119.5				
326.S LM/ORO TK	LM/ORO	119.5								119.5				
327.P LM/ORO TK	LM/ORO	116.0								116.0				
328.S LM/ORO TK	LM/ORO	116.0								116.0				
329.P LM/ORO TK	LM/ORO	116.0								116.0				
330.S LM/ORO TK	LM/ORO	116.0								116.0				
311.P Dry Bulk TK	Dry Bulk	55			55.0									
312.S Dry Bulk TK	Dry Bulk	55			55.0									
313.P Dry Bulk TK	Dry Bulk	55			55.0									
314.S Dry Bulk TK	Dry Bulk	55			55.0									
315.P Dry Bulk TK	Dry Bulk	55			55.0									
316.S Dry Bulk TK	Dry Bulk	55			55.0									
317.P Dry Bulk TK	Dry Bulk	55			55.0									
318.S Dry Bulk TK	Dry Bulk	55			55.0									
211.S LO TK 1	LO	3.0										3.0		
212.S LO TK 2	LO	6.7										6.7		
213.S LO TK 3	LO	11.2										11.2		
214.S LO TK 4	LO	12.7										12.7		
215.P LO TK on A-DK	LO	1.3										1.3		
Total Volume [m <sup>3</sup> ]			203.8	901.6	440.0	2,470.3	380.7	626.5	418.0	703.0	291.8	34.9	0.0	0.0
Spec Sheet Total Volume [m <sup>3</sup> ]			203.8	797.4	440.0	2,470.3	380.7	574.3	418.0	703.0	291.8	34.9	0.0	0.0

\*Capacities shown are for lead vessel. Actual capacities may vary slightly.

\*Capacities shown in **RED** are excluded from the total volume.

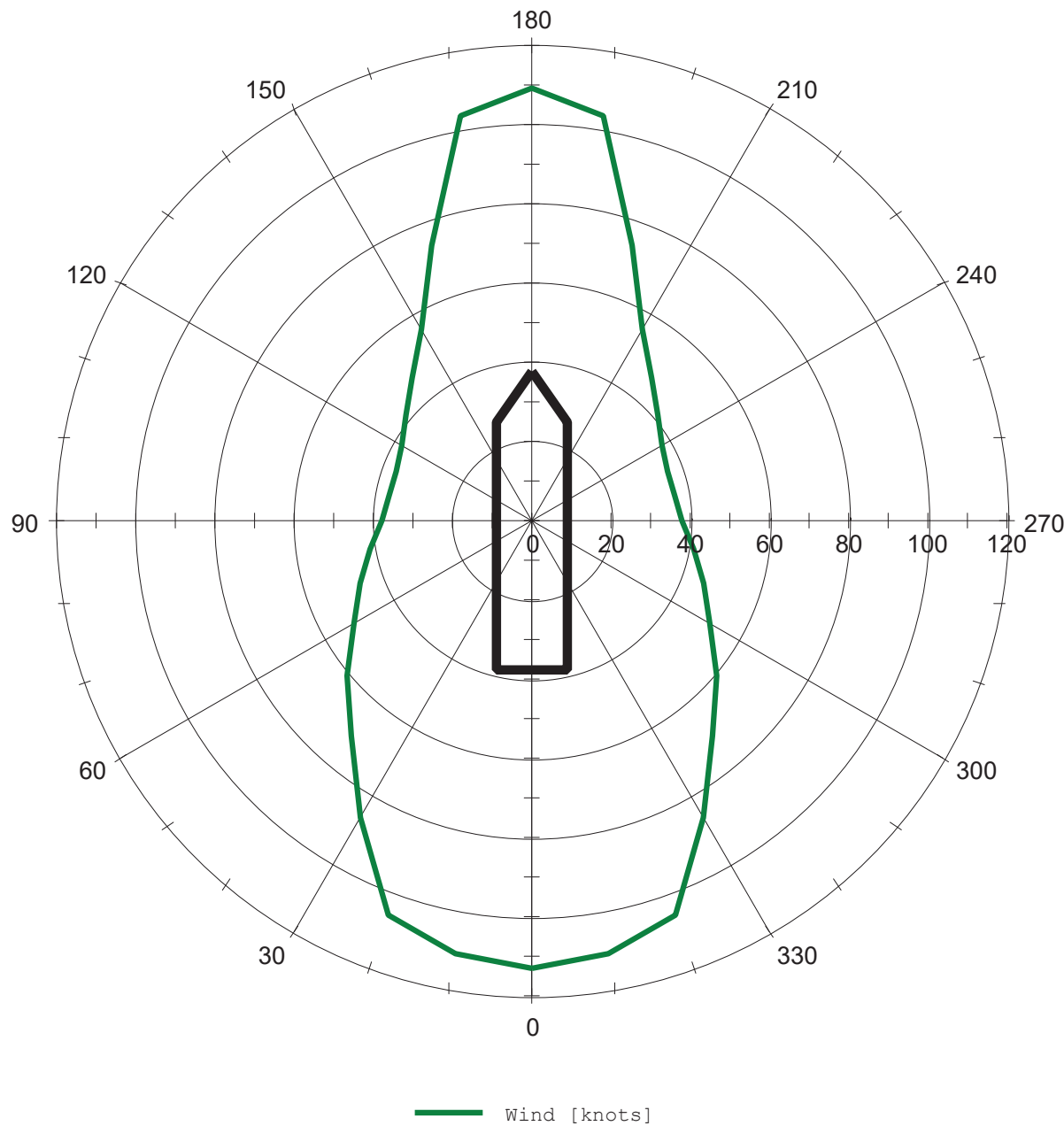
\*Capacities shown in **BLUE** are included in another Tank's Capacity.

\*Capacities shown in **GREEN** are counted for multiple Tank Capacities.





Ship: 3748 VS485 PSV  
Run: All thrusters



Environment:  
Wind Rotating 360 deg  
Wind Generated Current Rotating 360 deg  
Waves Rotating 360 deg