



## QSY 220 PLATFORM SUPPLY VESSEL

### Vessel Characteristics

Length, Overall:	217.2 ft	66.2 m
Beam:	45.9 ft	14 m
Depth:	17.1 ft	5.2 m
Maximum Draft:	13.8 ft	4.2 m
Light Draft:	5.9 ft	1.8 m
Minimum Height:	58.5 ft	17.8 m
Freeboard:	3.3 ft	1 m
Displacement:	2,950 lt	3,000 mt
Deadweight:	1,860 lt	1,890 mt
Clear Deck Space:	111 x 36 ft	34 x 11 m
Clear Deck Area:	4,030 ft <sup>2</sup>	370 m <sup>2</sup>
Deck Strength AFT:	1,020 lb/ft <sup>2</sup>	5 t/m <sup>2</sup>
Class Notations:	ABS: +A1, +AMS, +DPS-1	

### Capacities

Deck Cargo:	1,210 lt	1,230 t
Fuel Oil:	113,000 gal	430 m <sup>3</sup>
Potable Water:	27,200 gal	100 m <sup>3</sup>
Fresh Water:	148,000 gal	560 m <sup>3</sup>
Drill/Ballast Water:	18,100 gal	68.3 m <sup>3</sup>
Bulk Tanks (4 tanks):	6,630 ft <sup>3</sup>	190 m <sup>3</sup>
Liquid Mud (2.6 SG*):	2,120 bbl	340 m <sup>3</sup>
*Max Structural Specific Gravity		

## TIDEWATER

Find out more

[tdw.com](http://tdw.com)

Pg.2 Further Specifications

Pg.4 Capacity Table

Pg.3 General Arrangement

Pg.5 DP Capability Plot



Machinery

Main Engines (2):	CAT 3516B		
Total HP:	4,520		
Z-Drives:	Yes		
Propellers (2):	AQUAMASTER US205 1685KW		
Kort Nozzles:	2		
Primary Generators (3):	190 kw	480 v	60 hz
Driven by:	CAT 3306B		
Emergency Generators (1):	65 kw	480 v	60 hz
Bow Thruster (1):	RR TT1850 DPN CP		
Driven by:	1000 hp CAT 3508B Engine		
Total Thrust:	12.2 st	11.1 mt	

Deck Equipment

Anchors (2):	3,000 lb Workboat Style
Anchor Chain:	270 m of 32 mm chain per side
Windlass:	COASTAL MARINE 2W12531-13-00

Accommodations

No. of Berths:	18
Cabins:	2x1-man, 6x2-man & 1x4-man
Certified to Carry:	18
Galley seating:	13

Registration

Flag: MEXICO	Home Port: DOS BOCAS	
Hull Number: 1254	IMO N <sup>o</sup> : 9397729	
Year Built: 2006	Call Sign: XCUP5	
Builder:	QUALITY SHIPYARDS	
Tonnage (ITC):	1235 GT	481 NT

Performance\*

Fuel Consumption Vs Speed		
Maximum:	20 m³/day (220 gph) @ 12.9 knots	
Cruising:	9.2 m³/day (100 gph) @ 10 knots	
Range @ 10 Knots:	12,300 nm	
Transfer Rates		
Fuel Oil:	500 gpm @ 320 ft	110 m³/h @ 98 m
Fresh Water:	500 gpm @ 390 ft	110 m³/h @ 120 m
Drill/Ballast Water:	500 gpm @ 390 ft	110 m³/h @ 120 m
Bulk:	28 cfm @ 230 ft	47.5 m³/h @ 70 m
Liquid Mud:	800 gpm @ 420 ft	180 m³/h @ 130 m

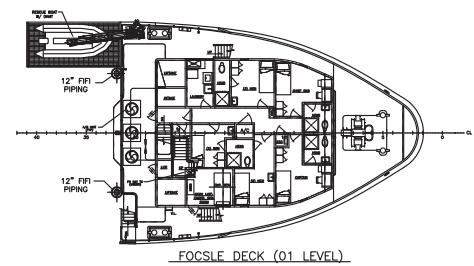
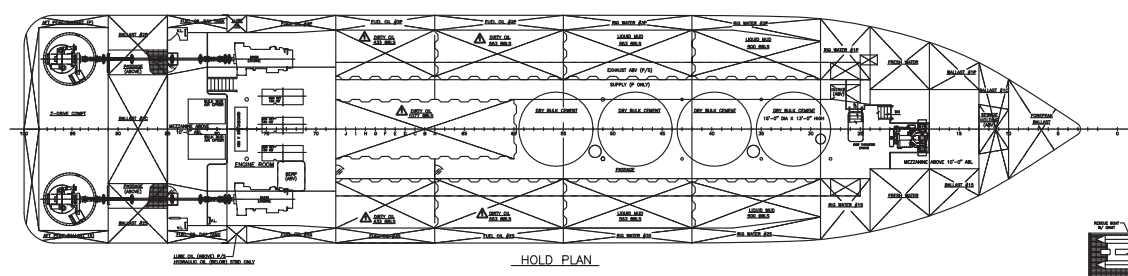
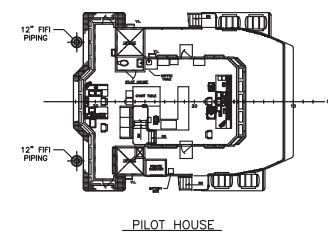
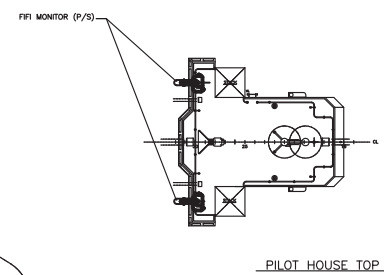
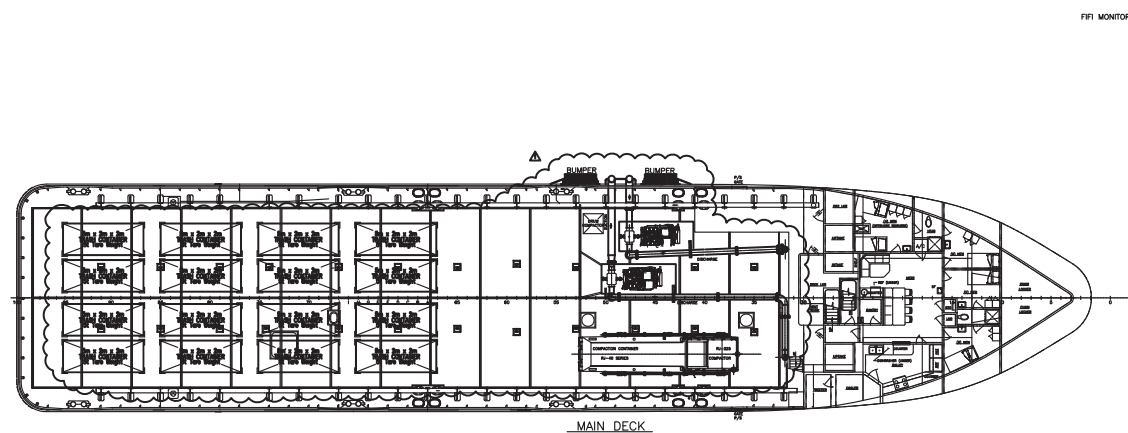
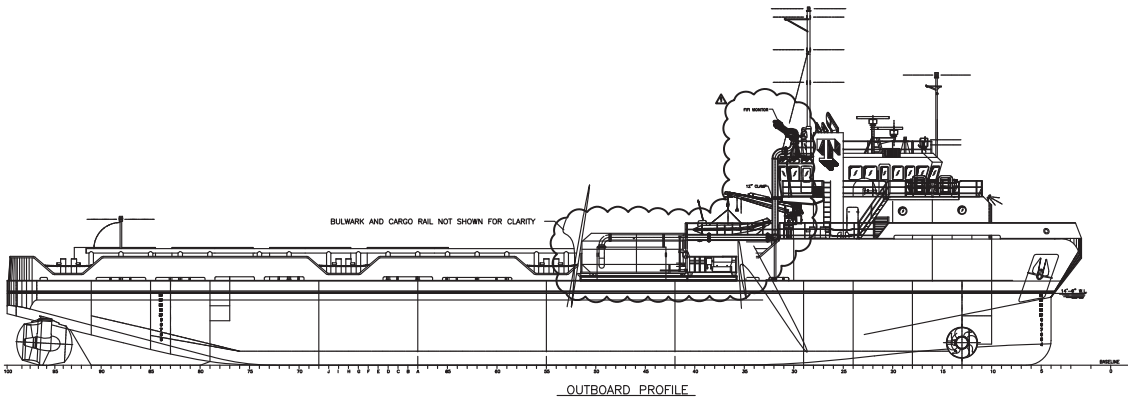
Nav/Comms Equipment

Radar(s):	2
Depth Sounder:	1
Cyro Compass:	2
Wind Speed Indicators:	1
Doppler Log:	1
Radio:	3 x VHF; 1 x SSB

Special Equipment

Firefighting:	2x 1,200 m³/hr Fire Monitor(s)
Dynamic Positioning:	DP-1
Ref. Systems:	1 x MRU; 2 x DGPS 1 x Laser-based
Mud Mixers:	Yes
Tank Cleaning:	Yes
Rescue Boat:	SOLAS Approved
Fuel Monitoring:	KRILL & EMERSON
Misc:	MSD - 18 Persons; Deck FiFi-1; Garbage Compactor; Waste Oil - 493m3

\*Approximate values assuming Ideal Conditions



# PAT TAYLOR

## Capacity Table



Tank	Contents	Volume m <sup>3</sup>	Base Oil	Fuel Oil	Dry Bulk	DW/WB	Potable Water	Fresh Water	Brine	Liquid Mud	Methanol	Lube Oil	Foam	Oil Disp.
DW/WB FP Tank	DW/WB	34.5				34.5								
No. 1 DW/WB P	DW/WB	24.7				24.7		24.7						
No. 1 DW/WB S	DW/WB	21.9				21.9		21.9						
No. 1 DW/WB C	DW/WB	21.9				21.9		21.9						
No. 2 DW/WB P	DW/WB	30.0				30.0		30.0						
No. 2 DW/WB S	DW/WB	30.0				30.0		30.0						
No. 2 DW/WB C	DW/WB	88.4				88.4		88.4						
DW/WB AP P	DW/WB	16.9				16.9								
DW/WB AP S	DW/WB	16.9				16.9								
No. 1 FW P	Ships FW	51.4					51.4							
No. 1 FW S	Ships FW	51.6					51.6							
No. 1 RW P	FW	46.9						46.9						
No. 1 RW S	FW	48.0						48.0						
No. 2 RW P	FW	50.8						50.8						
No. 2 RW S	FW	50.8						50.8						
No. 2 RW C	FW	40.6						40.6						
No. 3 RW P	FW	53.7						53.7						
No. 3 RW S	FW	53.7						53.7						
No. 1 FO C	FO	41.1		41.1										
No. 2 FO P	FO	54.2		54.2										
No. 2 FO S	FO	54.2		54.2										
No. 2 FO C	FO	41.8		41.8										
No. 3 FO P	FO	41.7		41.7										
No. 3 FO S	FO	41.7		41.7										
No. 3 FO C	FO	31.6		31.6										
No. 4 FO P	FO	40.0		40.0										
No. 4 FO S	FO	39.3		39.3										
No. 4 FO C	FO	41.9		41.9										
FO Day Tk P	FO	21.1		21.1										
FO Day Tk S	FO	21.1		21.1										
No. 1 LM P	LM	79.7								79.7				
No. 1 LM S	LM	79.7								79.7				
No. 2 LM P	LM	88.6								88.6				
No. 2 LM S	LM	88.6								88.6				
Cem Tk. 1	Dry Bulk	46.9			46.9									
Cem Tk. 2	Dry Bulk	46.9			46.9									
Cem Tk. 3	Dry Bulk	46.9			46.9									
Cem Tk. 4	Dry Bulk	46.9			46.9									
Lube Oil (P)	LO	1.9										1.9		
Lube Oil (S)	LO	1.9										1.9		
Total Volume [m <sup>3</sup> ]			0.0	469.5	187.8	285.4	103.1	561.5	0.0	336.4	0.0	3.9	0.0	0.0
Spec Sheet Total Volume [m <sup>3</sup> ]			0.0	427.2	187.8	68.3	103.1	561.5	0.0	336.4	0.0	3.9	0.0	0.0

\*Capacities shown are for lead vessel. Actual capacities may vary slightly.

\*Capacities shown in **RED** are excluded from the total volume.

\*Capacities shown in **BLUE** are included in another Tank's Capacity.

\*Capacities shown in **GREEN** are counted for multiple Tank Capacities.



