



## 75 M FUJIAN SE PLATFORM SUPPLY VESSEL

### Vessel Characteristics

Length, Overall:	246.1 ft	75 m
Beam:	56.8 ft	17.3 m
Depth:	26.3 ft	8 m
Maximum Draft:	21.3 ft	6.5 m
Light Draft:	11.2 ft	3.4 m
Minimum Height:	87.6 ft	26.7 m
Freeboard:	4.9 ft	1.5 m
Displacement:	5,510 lt	5,600 mt
Deadweight:	3,200 lt	3,250 mt
Clear Deck Space:	151 x 47 ft	46 x 14 m
Clear Deck Area:	6,840 ft <sup>2</sup>	640 m <sup>2</sup>
Deck Strength AFT:	1,130 lb/ft <sup>2</sup>	5.5 t/m <sup>2</sup>
Class Notations:	ABS: +A1, (E), Offshore Support, FFV-1, +AMS, +ACCU, +DPS-2, RW	

### Capacities

Deck Cargo:	1,180 lt	1,200 t
Fuel Oil:	260,000 gal	980 m <sup>3</sup>
Potable Water:	31,100 gal	120 m <sup>3</sup>
Fresh Water:	111,000 gal	420 m <sup>3</sup>
Drill/Ballast Water:	426,000 gal	1,610 m <sup>3</sup>
Bulk Tanks (4 tanks):	7,850 ft <sup>3</sup>	220 m <sup>3</sup>
Liquid Mud (2.5 SG*):	3,920 bbl	620 m <sup>3</sup>
*Max Structural Specific Gravity		
Oil Dispersant:	3,330 gal	12.6 m <sup>3</sup>
Fire Fighting Foam:	3,330 gal	12.6 m <sup>3</sup>

## TIDEWATER

Find out more

[tdw.com](http://tdw.com)

Pg.2 Further Specifications

Pg.4 Capacity Table

Pg.3 General Arrangement

Pg.5 DP Capability Plot

Machinery

Main Engines (2):	NIIGATA 8L28H		
Total HP:	6,000		
Z-Drives:	Yes		
Propellers (2):	NIIGATA ZP-41, Fixed		
Primary Generators (3):	450 kw	410 v	50 hz
Driven by:	CAT C18		
Secondary Generators (2):	1000 kw	410 v	50 hz
Driven by:	Main Engine		
Emergency Generators (1):	80 kw	410 v	50 hz
Driven by:	CAT C4.4		
Bow Thruster (2):	Kawasaki KT-88B3 CPP		
Driven by:	650 kw Electric Motor		
Total Thrust:	21.8 st	19.8 mt	

Deck Equipment

Anchors (2):	4365 lbs HHP
Anchor Chain:	470 m of 46 mm chain per side
Windlass:	Plimsoll 13t@18m/min
Crane (1):	3 t @ 9.8 m
Capstans (2):	10 t Mentrade 25m/min
Tugger (2):	10 t Mentrade 24m/min

Accommodations

No. of Berths:	50
Cabins:	10x1-man & 20x2-man
Certified to Carry:	50
Galley seating:	23
Hospital:	Yes

Registration

Flag: MEXICO	Home Port: DOS BOCAS	
Hull Number: 5	IMO N <sup>o</sup> : 9617791	
Year Built: 2012	Call Sign: XCUC8	
Builder:	FUJIAN SOUTHEAST SHIPYARD	
Tonnage (ITC):	2899 GT	869 NT

Performance\*

Fuel Consumption Vs Speed		
Maximum:	22.7 m³/day (250 gph) @ 13 knots	
Cruising:	18.2 m³/day (200 gph) @ 10 knots	
Economical:	13.6 m³/day (150 gph) @ 8 knots	
Range @ 8 Knots:	13,900 nm	
Transfer Rates		
Fuel Oil:	660 gpm @ 260 ft	150 m³/h @ 80 m
Fresh Water:	440 gpm @ 280 ft	100 m³/h @ 85 m
Drill/Ballast Water:	440 gpm @ 260 ft	100 m³/h @ 80 m
Bulk:	33 cfm @ 200 ft	56 m³/h @ 60 m
Liquid Mud:	330 gpm @ 300 ft	75 m³/h @ 90 m

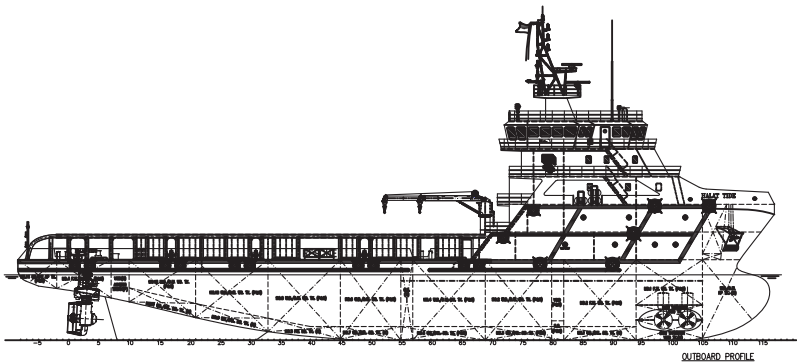
Nav/Comms Equipment

Radar(s):	2
Depth Sounder:	1
Gyro Compass:	3
Wind Speed Indicators:	3
Doppler Log:	1
Radio:	2 x VHF

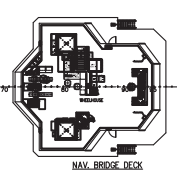
Special Equipment

Firefighting:	FiFi-1
Dynamic Positioning:	DP-2
Ref. Systems:	3 x MRU; 2 x DGPS 1 x Microwave-based; 1 x Laser-based
Water Maker:	2 X 10 T/DAY
Mud Circulation System/ Mud Mixers:	Yes/Yes
Rescue Zone:	Yes
Rescue Boat:	6 Man Solas Approved
Fuel Monitoring:	FUELTRAX
Reefer Sockets:	1x 415V 63A; 5x 415V 32A; 2x 220V 32A
SPS Compliant:	Yes
Misc:	MSD - 50 PERSONS

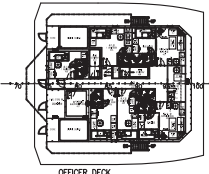
\*Approximate values assuming Ideal Conditions



OUTBOARD PROFILE

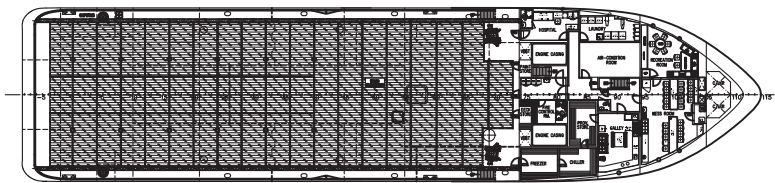


NAV. BRIDGE DECK

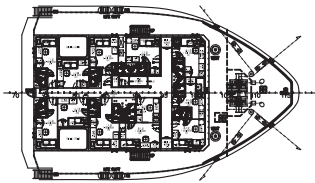


OFFICER DECK

0 1 1 MAN = 6 MEN  
TOTAL = 6 MEN

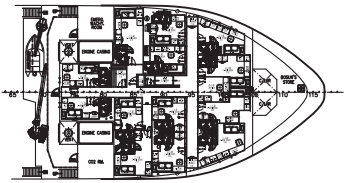


MAIN DECK PLAN



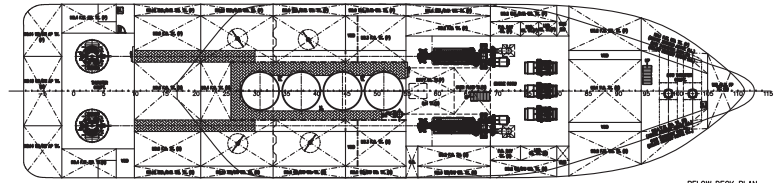
UPPER FORECASTLE DECK PLAN

0 1 1 MAN = 6 MEN  
TOTAL = 6 MEN

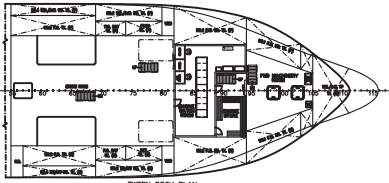


FORECASTLE DECK PLAN

13 1 5 MEN = 58 MEN  
TOTAL = 58 MEN



BELOW DECK PLAN



TWEEN DECK PLAN

# ROZO TIDE

## Capacity Table



Tank	Contents	Volume m <sup>3</sup>	Base Oil	Fuel Oil	Dry Bulk	DW/WB	Potable Water	Fresh Water	Brine	Liquid Mud	Methanol	Lube Oil	Foam	Oil Disp.
FP DW/WB Tk C	DW/WB	98.5				98.5								
NO.1 DB DW/BW C	DW/WB	83.4				83.4								
NO.2 DW/BW P	DW/WB	79.9				79.9								
NO.2 DW/BW S	DW/WB	79.9				79.9								
NO.3 DB DW/BW P	DW/WB	43.3				43.3								
NO.3 DB DW/BW S	DW/WB	43.3				43.3								
NO.4 DW/BW P	DW/WB	103.7				103.7								
NO.4 DW/BW S	DW/WB	95.3				95.3								
NO.5 DB DW/BW P	DW/WB	28.6				28.6								
NO.5 DB DW/BW S	DW/WB	28.6				28.6								
NO.6 DW/BW P	DW/WB	72.0				72.0								
NO.6 DW/BW S	DW/WB	72.0				72.0								
NO.7 DB DW/BW C	DW/WB	51.5				51.5								
NO.8 DW/BW P	DW/WB	88.8				88.8								
NO.8 DW/BW S	DW/WB	88.8				88.8								
NO.9 DB DW/BW C	DW/WB	73.0				73.0								
NO.10 DW/BW P	DW/WB	77.1				77.1								
NO.10 DW/BW S	DW/WB	77.1				77.1								
NO.11 DB DW/BW C	DW/WB	56.7				56.7								
NO.12 DW/BW P	DW/WB	55.0				55.0								
NO.12 DW/BW S	DW/WB	55.0				55.0								
No.13 AP DW/WB Tk C	DW/WB	79.5				79.5								
No.14 AP DW/WB Tk P	DW/WB	40.3				40.3								
No.14 AP DW/WB Tk S	DW/WB	40.3				40.3								
No.1 FW Tk P	Ship's FW	58.8					58.8							
No.1 FW Tk S	Ship's FW	58.8					58.8							
No.2 FW Tk P	FW	132.7						132.7						
No.2 FW Tk S	FW	132.7						132.7						
No.3 DB FW Tk C	FW	65.9						65.9						
No.4 FW Tk P	FW	45.1						45.1						
No.4 FW Tk S	FW	45.1						45.1						
NO.1 FO Tk C	FO	105.9		105.9										
NO.2 FO Tk P	FO	88.0		88.0										
NO.2 FO Tk S	FO	73.7		73.7										
NO.3 FO Tk P	FO	157.4		157.4										
NO.3 FO Tk S	FO	157.4		157.4										
NO.4 FO Tk C	FO	87.1		87.1										
NO.5 FO Tk P	FO	78.6		78.6										
NO.5 FO Tk S	FO	78.6		78.6										
NO.6 FO Tk C	FO	157.4		157.4										
FO Day Tank P	FO	24.1		24.1										
FO Day Tank S	FO	24.1		24.1										
FO Overflow Tk C	FO	17.5		17.5										
Lube Oil Tk P	LO	5.8										5.8		
Lube Oil Tk S	LO	12.8										12.8		
No. 1 LM Tk P	LM/BR	184.2								184.2				
No. 1 LM Tk S	LM/BR	184.2								184.2				
No. 2 LM Tk P	LM/BR	127.8								127.8				
No. 2 LM Tk S	LM/BR	127.8								127.8				
NO.1 Dry Bulk	Dry Bulk	58.0			58.0									
NO.2 Dry Bulk	Dry Bulk	58.0			58.0									
NO.3 Dry Bulk	Dry Bulk	58.0			58.0									
NO.4 Dry Bulk	Dry Bulk	48.3			48.3									
Foam Tk	Foam	12.6											12.6	
Detergent	Disp.	12.6												12.6
Total Volume [m <sup>3</sup> ]			0.0	1,049.8	222.3	1,611.6	117.6	421.5	0.0	624.0	0.0	18.6	12.6	12.6
Spec Sheet Total Volume [m <sup>3</sup> ]			0.0	984.1	222.3	1,611.6	117.6	421.5	0.0	624.0	0.0	18.6	12.6	12.6

\*Capacities shown are for lead vessel. Actual capacities may vary slightly.

\*Capacities shown in **RED** are excluded from the total volume.

\*Capacities shown in **BLUE** are included in another Tank's Capacity.

\*Capacities shown in **GREEN** are counted for multiple Tank Capacities.

