



Conan Wu 7,080 BHP Anchor Handling Tug

Vessel Characteristics

Length, Overall:	212.6 ft	64.8 m
Beam:	52.5 ft	16 m
Depth:	19 ft	5.8 m
Maximum Draft:	16 ft	4.9 m
Minimum Height:	83 ft	25.3 m
Freeboard:	3 ft	0.9 m
Displacement:	3,540 lt	3,600 mt
Deadweight:	1,920 lt	1,950 mt
Clear Deck Space:	114 x 43 ft	35 x 13 m
Clear Deck Area:	4,890 ft ²	450 m ²
Deck Strength:	1,110 lb/ft ²	5.4 t/m ²
Class Notations:	ABS: +A1(E), OSV AH, Towing Vessel, FiFi-1, +AMS, +DPS-1	

Capacities

Deck Cargo:	880 lt	900 t
Fuel Oil:	142,000 gal	540 m ³
Potable Water:	52,800 gal	200 m ³
Fresh Water:	247,000 gal	940 m ³
Drill/Ballast Water:	44,200 gal	170 m ³
Bulk Tanks (4 tanks):	6,320 ft ³	180 m ³
Liquid Mud (21 lbs/gal):	2,770 bbl	440 m ³
Oil Dispersant:	3,720 gal	14.1 m ³
Fire Fighting Foam:	3,720 gal	14.1 m ³

TIDEWATER

Find out more

tdw.com

Pg.2 Further Specifications

Pg.4 Capacity Table

Pg.3 General Arrangement

Pg.5 DP Capability Plot



Machinery

Main Engines (2):	MAK 8M25		
<i>Total HP:</i>	7,080		
Propellers (2):	2900mm CPP, 4 Blade		
Kort Nozzles:	2		
Primary Generators (2):	800 kw	440 v	60 hz
<i>Driven by:</i>	Main Engines		
Secondary Generators (2):	370 kw	440 v	60 hz
<i>Driven by:</i>	CAT 3408 Dita		
Emergency Generators (1):	100 kw	440 v	60 hz
<i>Driven by:</i>	CAT 3304 Dita		
Bow Thruster (1):	Tunnel TT1650		
<i>Driven by:</i>	590 kw Electric Motor		
<i>Total Thrust:</i>	9.9 st	9 mt	

Performance*

Fuel Consumption Vs Speed		
<i>Maximum:</i>	26.2 m ³ /day (290 gph) @ 13 knots	
<i>Cruising:</i>	20 m ³ /day (220 gph) @ 12 knots	
<i>Economical:</i>	15.8 m ³ /day (170 gph) @ 10 knots	
<i>Standby:</i>	1.2 m ³ /day (13.6 gph) @ 0 knots	
Range @ 12 Knots:	7,730 nm	
Bollard Pull	98.7 st	89.5 mt
Transfer Rates		
<i>Fuel Oil:</i>	660 gpm @ 290 ft	150 m ³ /h @ 90 m
<i>Fresh Water:</i>	660 gpm @ 290 ft	150 m ³ /h @ 90 m
<i>Drill/Ballast Water:</i>	660 gpm @ 290 ft	150 m ³ /h @ 90 m
<i>Bulk:</i>	26.3 cfm @ 200 ft	45 m ³ /h @ 60 m
<i>Liquid Mud:</i>	550 gpm @ 290 ft	120 m ³ /h @ 90 m

Deck Equipment

Anchors (2):	4740 lbs Stockless Bower
Anchor Chain:	250 m of 40 mm chain per side
Crane:	2 t @ 9.6 m
Capstans (2):	10 t CM4110
Tugger (2):	10 t Brattvaag WM4110 (18m/min)

Tow/Anchor Handling

Winch:	Hydraulic, Double Drum, Waterfall (275 T Brake)
<i>Model:</i>	Brattvaag SL225W/2BSL225W
<i>Line Pull:</i>	220 mt
<i>Tow Wire/Work Wire:</i>	1,400 m of 56 mm
Pennant Reels (1):	1,400 m of 56 mm
Shark Jaw:	(1) Karmoy, 300t SWL Karm Fork
Tow Pins:	(1) Set Karmoy, 300t SWL
Chain Handler:	2
Stern Roller:	9.8ft x 4.9ft; 300 mt SWL

Nav/Comms Equipment

Radar(s):	2
Depth Sounder:	1
Gyro Compass:	2
Doppler Log:	1
Radio:	2 x VHF; 1 x SSB
Sat Com:	1xInmarsat-C

Accommodations

No. of Berths:	28
Cabins:	4x1-man, 4x2-man & 4x4-man
Certified to Carry:	28
Galley seating:	30
Hospital:	Yes

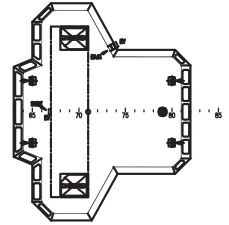
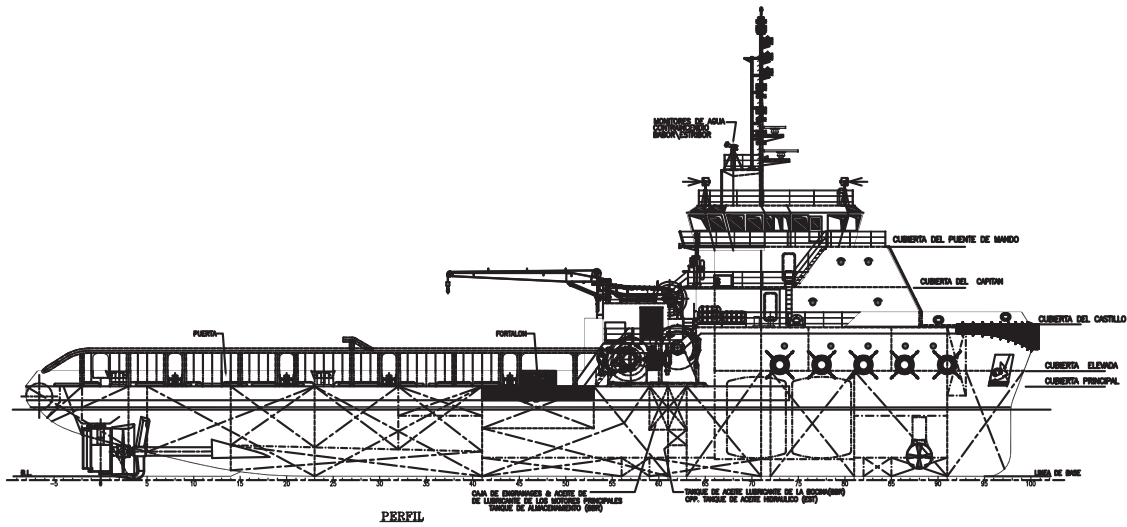
Special Equipment

Firefighting:	FiFi-1
Dynamic Positioning:	DP-1 CLASSED
<i>Ref. Systems:</i>	3 x MRU; 2 x DGPS; 1 x Laser-based
Mud Mixers:	Yes
Rescue Boat:	6-MAN SOLAS MOB

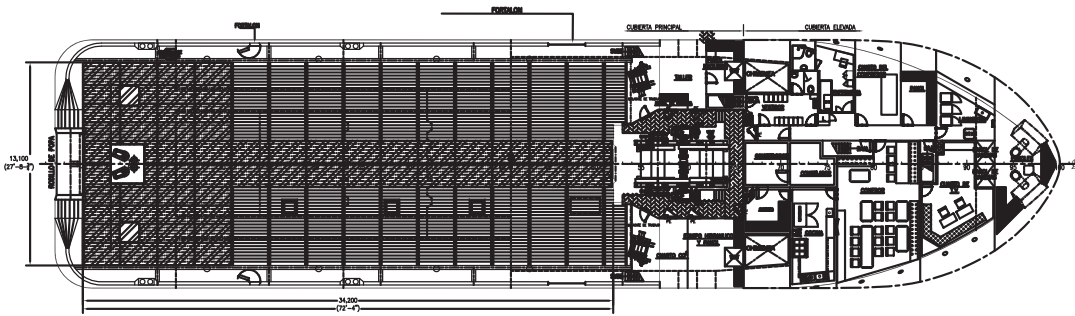
Registration

Flag: VANUATU	IMO N^o: 9300647
Year Built: 2005	Call Sign: YJUM6
Builder:	PAN UNITED SHIPYARDS
Tonnage (ITC):	1868 GT 588 NT

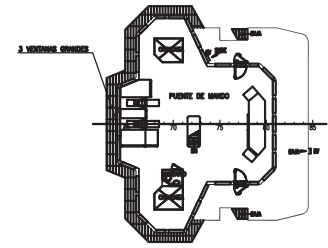
*Approximate values assuming Ideal Conditions



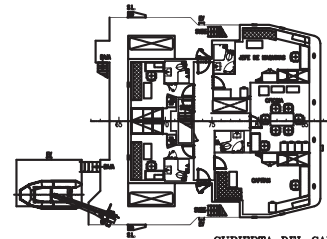
CUBIERTA DE MAGISTRAL



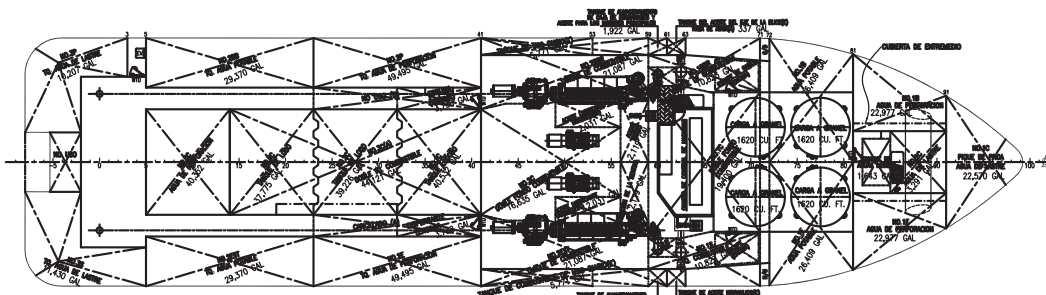
CUBIERTA PRINCIPAL



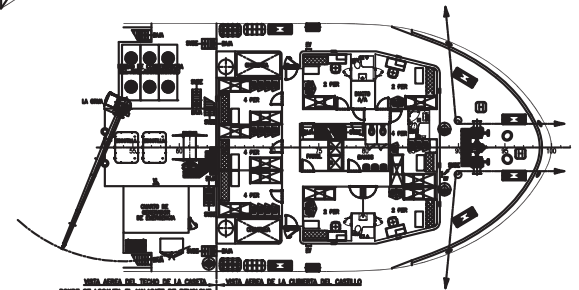
CUBIERTA DEL PUENTE DE MANDO



CUBIERTA DEL CAPITAN



PLANO DE TANQUES



CUBIERTA DEL CASTILLO



KONGSBERG

DP Capability Plot

PUS NB 151

Case number : 1
 Case description : ERN - All thruster including rudders onlin
 Thrusters active : T1-T3
 Rudders active : R1-R2

Input file reference : Foot_1830.scp
 Last modified : 2004-04-29 12.56 (v. 2.0.0)

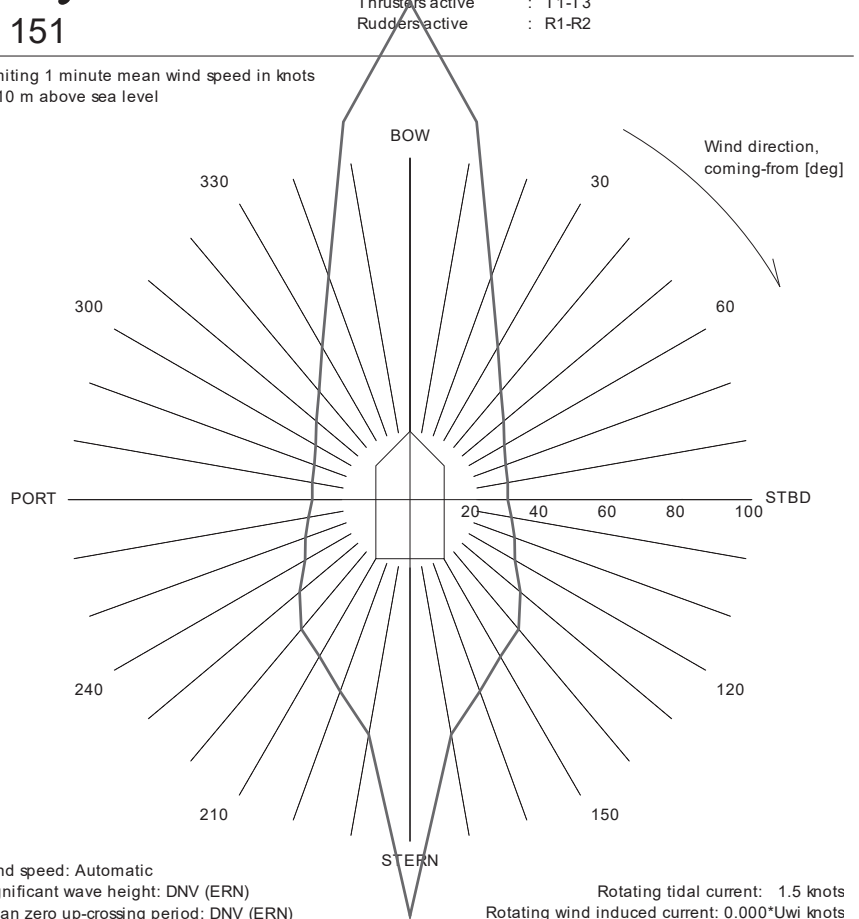
Length overall : 64.8 m
 Length between perpendiculars : 58.7 m
 Breadth : 16.0 m
 Draught : 4.2 m
 Displacement : 25000 t (Cb = 0.62)
 Longitudinal radius of inertia : 14.7 m (= 0.25 * Lpp)
 Pos. of origin ahead of Lpp/2 (Xo) : -0.5 m
 Wind load coefficients : Calculated (Blendermann)
 Current load coefficients : Calculated (Strip-theory)
 Wave-drift load coefficients : Database (Scaled by Breadth/Length)

Tidal current direction offset : 0.0 deg
 Wave direction offset : 0.0 deg
 Wave spectrum type : JONSWAP (gamma = 3.30)
 Wind spectrum type : NPD
 Current - wave-drift interaction : OFF
 Load dynamics allowance : 1.0 * STD of thrust demand
 Additional surge force : 0.0 tf
 Additional sway force : 0.0 tf
 Additional yawing moment : 0.0 tf.m
 Additional force direction : Fixed
 Density of salt water : 1026.0 kg/m³
 Density of air : 1.23 kg/m³

Power limitations : OFF

#	Thruster	X [m]	Y [m]	F+ [tf]	F- [tf]	Max [%]	Pe [kW]	Rudder
1	TUNNEL	23.7	0.0	10.0	-10.0	100	820	
2	PROP_AS	-27.3	-4.5	46.0	-22.0	100	2640	BECKER
3	PROP_AS	-27.3	4.5	46.0	-22.0	100	2640	BECKER

Limiting 1 minute mean wind speed in knots
 at 10 m above sea level



Wind speed: Automatic
 Significant wave height: DNV (ERN)
 Mean zero up-crossing period: DNV (ERN)

Rotating tidal current: 1.5 knots
 Rotating wind induced current: 0.000*Uwi knots