



THOMA-SEA 272 PLATFORM SUPPLY VESSEL

Vessel Characteristics

Length, Overall:	272 ft	82.9 m
Beam:	58.1 ft	17.7 m
Depth:	20 ft	6.1 m
Maximum Draft:	16.4 ft	5 m
Light Draft:	6.9 ft	2.1 m
Minimum Height:	85.1 ft	25.9 m
Freeboard:	3.3 ft	1 m
Displacement:	5,650 lt	5,740 mt
Deadweight:	3,520 lt	3,580 mt
Clear Deck Space:	190 x 51 ft	58 x 16 m
Clear Deck Area:	9,450 ft ²	880 m ²
Deck Strength AFT:	1,020 lb/ft ²	5 t/m ²
Class Notations:	ABS: +A1, FIFI-1, OSV, (E), +AMS, +ACCU, +DPS-2, UWILD, NVIC 2-95 Change 2 ACP, ENVIRO, GP	

Capacities

Deck Cargo:	2,250 lt	2,290 t
Fuel Oil:	249,000 gal	940 m ³
Potable Water:	33,100 gal	130 m ³
Fresh Water:	437,000 gal	1,660 m ³
Drill/Ballast Water:	61,700 gal	230 m ³
Bulk Tanks (6 tanks):	9,230 ft ³	260 m ³
Liquid Mud (2.7 SG*):	10,800 bbl	1,710 m ³
*Max Structural Specific Gravity		

TIDEWATER

Find out more

tdw.com

Pg.2 Further Specifications

Pg.4 Capacity Table

Pg.3 General Arrangement

Pg.5 DP Capability Plot



Machinery

Diesel Electric Vessel			
<i>Propulsive/Total HP:</i>	5,360 / 9,280		
Z-Drives:	Yes		
Propellers (2):	2 x 2000kW FPP		
Kort Nozzles:	2		
Primary Generators (4):	1,730 kw	690 v	60 hz
<i>Driven by:</i>	CAT 3512C		
Secondary Generators (1):	550 kw	690 v	60 hz
<i>Driven by:</i>	CAT C18		
Emergency Generators (1):	95 kw	480 v	60 hz
<i>Driven by:</i>	CAT C4.4		
Bow Thruster (2):	1xBERG BFTT419, 1xHRP 6011RT		
<i>Driven by:</i>	846kW Electric Motor		
Total Thrust:	28.3 st	25.7 mt	

Deck Equipment

Anchors (2):	4710 LBS AC-14 HHP
Anchor Chain:	250 m of 40 mm chain per side
Windlass:	COASTAL MARINE EQUIP.
Crane (1):	4.5 t @ 6.1 m

Accommodations

No. of Berths:	36
Cabins:	2x1-man, 15x2-man & 1x4-man
Certified to Carry:	36
Galley seating:	20
Hospital:	Yes

Registration

Flag: LIBERIA	Home Port: MONROVIA
Hull Number: 147	IMO N^o: 9582312
Year Built: 2014	Call Sign: ABOG3
Builder:	THOMA-SEA MARINE
Tonnage (ITC):	2918 GT / 1310 NT

Performance*

Fuel Consumption Vs Speed		
<i>Maximum:</i>	25.4 m ³ /day (280 gph) @ 13.5 knots	
<i>Cruising:</i>	14.7 m ³ /day (160 gph) @ 11 knots	
<i>Economical:</i>	11.8 m ³ /day (130 gph) @ 10 knots	
<i>Standby:</i>	1 m ³ /day (11 gph) @ 0 knots	
Range @ 11 Knots:	16,900 nm	
Transfer Rates		
<i>Fuel Oil:</i>	750 gpm @ 230 ft	170 m ³ /h @ 69 m
<i>Fresh Water:</i>	400 gpm @ 230 ft	91 m ³ /h @ 69 m
<i>Drill/Ballast Water:</i>	750 gpm @ 200 ft	170 m ³ /h @ 61 m
<i>Bulk:</i>	25.6 cfm @ 180 ft	43.5 m ³ /h @ 56 m
<i>Liquid Mud:</i>	1000 gpm @ 230 ft	230 m ³ /h @ 69 m

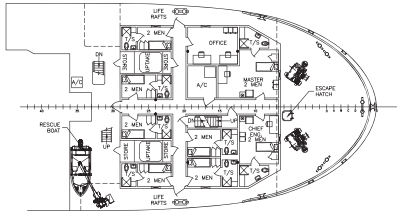
Nav/Comms Equipment

Radar(s):	2
Depth Sounder:	1
Cyro Compass:	3
Wind Speed Indicators:	3
Doppler Log:	1
Radio:	3 x VHF; 1 x SSB
Sat Com:	1 X FELCOM18

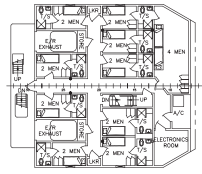
Special Equipment

Firefighting:	FiFi-1
Dynamic Positioning:	DP-2
Ref. Systems:	3 x MRU; 3 x DGPS 1 x Microwave-based; 1 x Laser-based
Mud Mixers:	Yes
Tank Cleaning:	Yes
Rescue Boat:	RSQ 450A
Reefer Sockets:	3x 460V 35A; 3x 120V 20A
Misc:	MSD - 32 Persons; BHS Water Traps Only

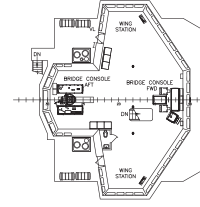
*Approximate values assuming Ideal Conditions



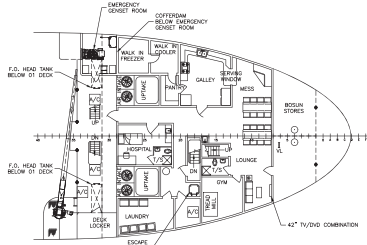
02 DECK PLAN (FOCSLE)



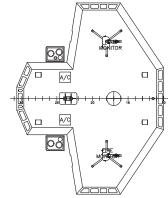
03 DECK PLAN



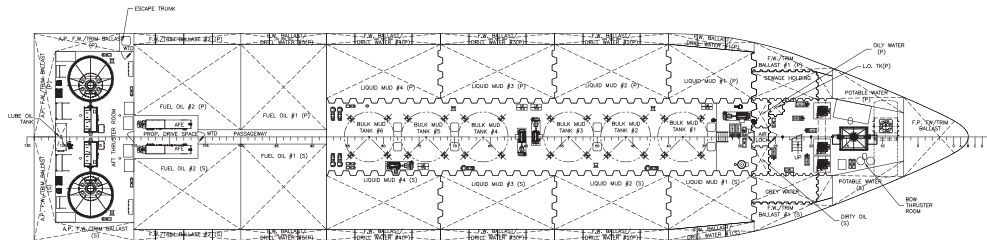
BRIDGE DECK PLAN



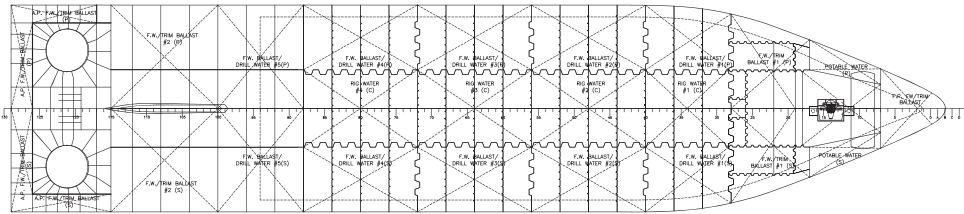
01 DECK PLAN



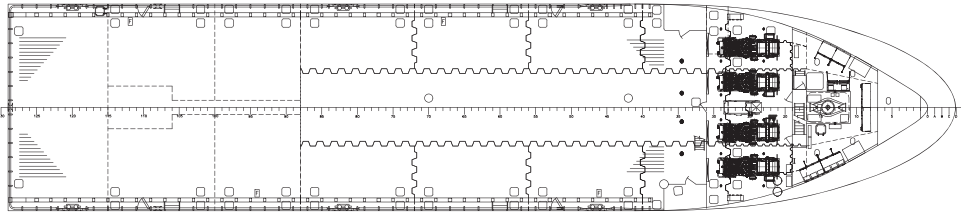
PILOTHOUSE TOP



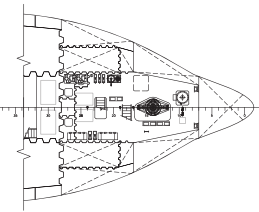
HOLD PLAN



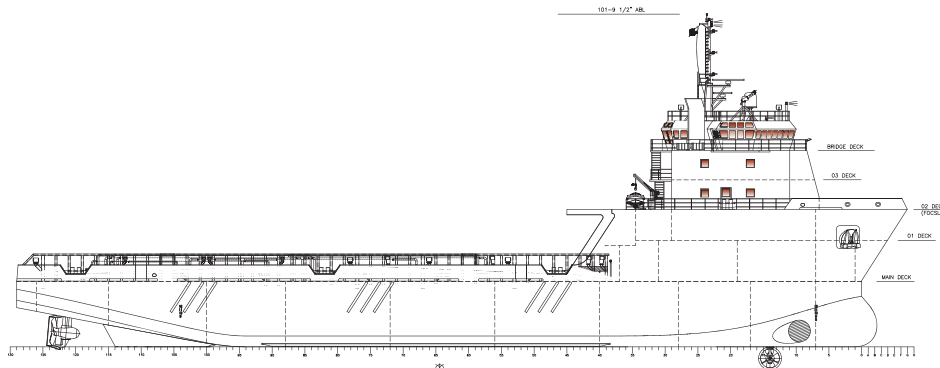
DOUBLE BOTTOM PLAN



MAIN DECK PLAN



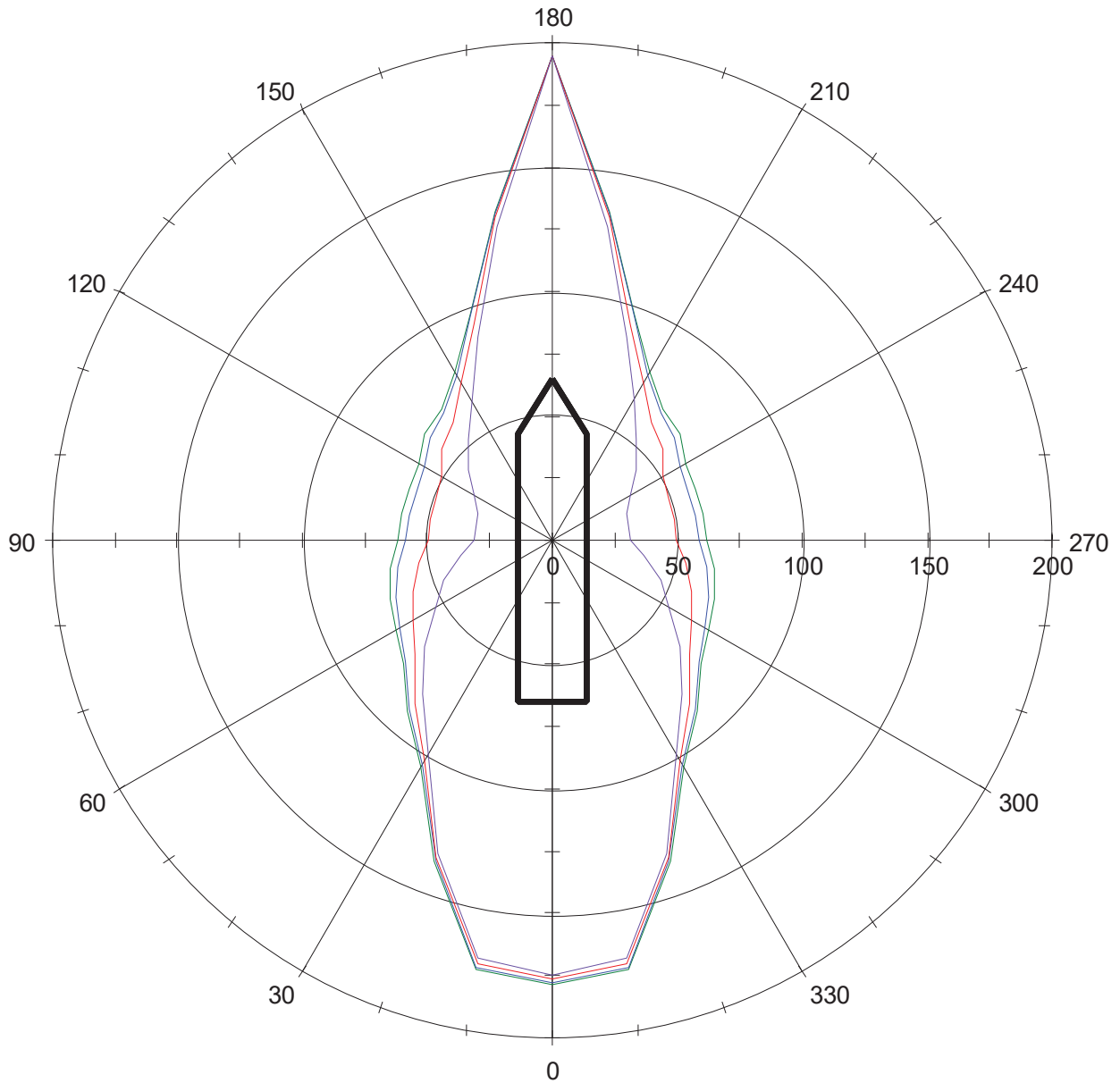
FIRST PLATFORM PLAN



OUTBOARD PROFILE



Ship: Thomas-Sea H147
Run : All Online, 100%



- Wind [knots], Current = 0 knots
- Wind [knots], Current = 1 knots
- Wind [knots], Current = 2 knots
- Wind [knots], Current = 3 knots