

PORTOSALVO

6,310 BHP DP2, FIFI 1, OIL REC - PLATFORM SUPPLY VESSEL



REGISTRATION

Owner	Portosalvo Limited
Manager	GulfMark UK Ltd
Built	Simek, Norway, April 2005
Classification	DNV + 1A1 – SF – DK+, Dynpos AUT (DP1), Clean, TMON, Oil Rec, Fi-Fi1
Flag	UK

DIMENSIONS

LOA	72 m
Breadth (moulded)	16 m
Depth (mould to sh.dk)	7 m
Draft (max)	c. 5.9 m
GT	2154 T
NT	1010 T
Deadweight	3,210 T

MACHINERY

Main Engines	2 x 3,155 BHP
Thrusters Bow	2 x 800 BHP
Thruster Stern	2 x 800 BHP
Shaft Generators	2 x 1800 kVA
Aux Generators	2 x 325kVA, 1 x 81 kVA
Rudders	2 x Rolls Royce High Lift
Propellers	2 x CPP
Capstans	2 x 8 T
Deck Crane	1 x 5T @ 10m or 3T @ 16m
Reefer Points	1 x 220v, 16A, 60hz 1 x 440v, 32A, 60hz
Tugger Winch	2 x 10T

CARGO CAPACITY

Deck Area	688.5 m ² (51 x 13.5)
Deck Load	1,600 T
Fuel Oil	994 m ³ @ 100%
Potable Water	813 m ³ @ 100%
Drill Water	1,107 m ³ @ 100%
Oil Based Mud	6,244 bbls @ 100%
Base Oil	1,263 bbls @ 100%
Brine	6,244 bbls @ 100%
Dry Bulk	9,000 cuft @ 100%

DUAL PURPOSE MUD / BRINE TANKS

All 10 for mud or all 10 for brine, or 6 x mud and 4 x brine or vice versa, with complete segregation

TANK WASHING SYSTEM

1 x Fixed tank wash system (hot / cold)

OIL RECOVERY

Tankage	794.5 m ³ @ 100% (mud / O/R tanks)
Discharge Max.	500 m ³ / hr
Bulwarks	Non removable

DISCHARGE RATES

Fuel	250 m ³ /hr	@ 90 mhd
Pot Water	200 m ³ /hr	@ 90 mhd
Drill Water	150 m ³ /hr	@ 90 mhd
Oil Based Mud	2 x 125 m ³ /hr	@ 90 mhd
Base Oil	150 m ³ /hr	@ 90 mhd
Brine	1 x 100 m ³ /hr	@ 90 mhd
Cement	80 T/hr	@ 90 mhd
Barytes	60 T/hr	@ 90 mhd
Bentonite	100 T/hr	@ 90 mhd

NAVIGATION AND COMMUNICATION EQUIPMENT

1 x Furuno 10 cm ARPA RADAR 2837S
 1 x Furuno 3 cm RADAR, Model 2827
 1 x Furuno Satellite Navigator GP 90
 1 x Jotron EPIRB Tron 40S
 3 x Tron TR20 VHF GMDSS
 4 x Motorola portable UHF
 1 x GSM Cellular phone
 1 x Anschutz universal signal unit
 2 x Anschutz ST22 gyro compass
 1 x Anschutz Digital autopilot
 1 x Furuno echo sounder
 1 x Furuno Doppler speed log
 1 x Wind indicator
 1 x MF/HF Duplex SSB Radio Station
 2 x Inmarsat SAT C
 1 x Inmarsat SAT B
 1 x Furuno Navtex receiver
 2 x Duplex VHF with DSC
 1 x Simplex VHF
 1 x Electronic Chart system
 1 x Furuno AIS system
 1 x KU Band Satellite Comm System

MANOEUVRING EQUIPMENT

1 x Kongsberg Joystick

DP SYSTEM

Kongsberg Simrad SDP 10
 1 x Fan Beam reference system
 1 x DGPS reference system
 Interface fitted for HPR

FIREFIGHTING EQUIPMENT

FiFi 1 (DNV Classed)
 2 x 1500m³/hr centrifugal pumps
 2 x 1200m³/hr monitors

RESCUE BOAT

1 x Rigid Rescue Boat (50 bhp)

ACCOMMODATION

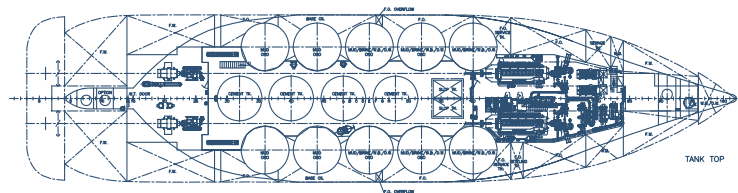
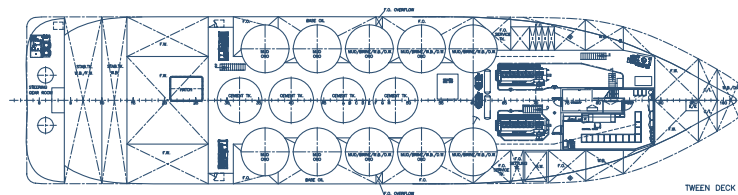
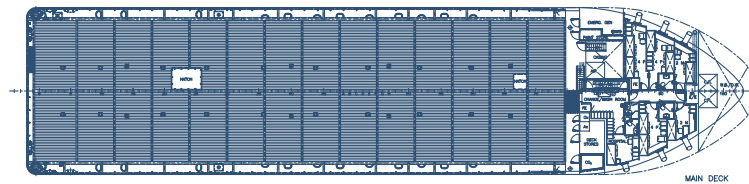
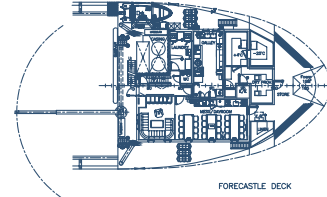
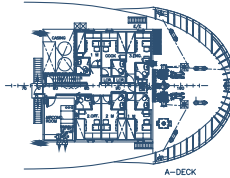
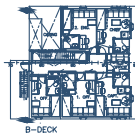
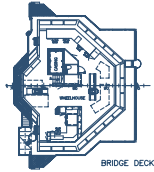
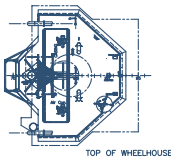
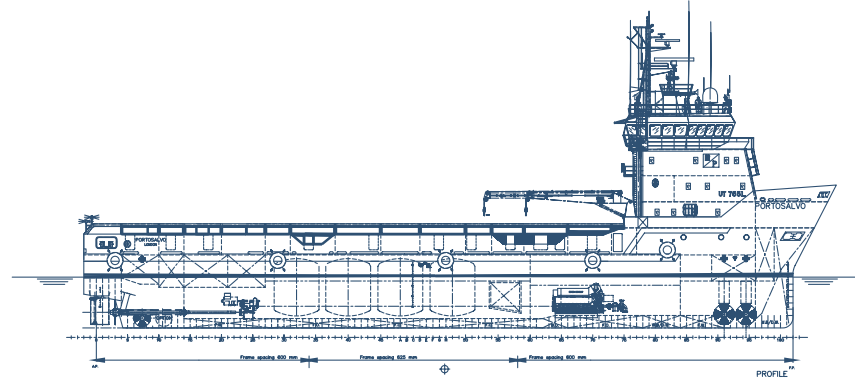
10 x 1 man cabins
 2 x 2 man cabins
 3 x 4 man cabins



PORTOSALVO

6,310 BHP DP2, FIFI 1, OIL REC - PLATFORM SUPPLY VESSEL

GENERAL ARRANGEMENT DRAWING





PORTOSALVO

6,310 BHP DP2, FIFI 1, OIL REC - PLATFORM SUPPLY VESSEL

TANK CAPACITIES

TANK	CUBIC METRES			BARRELS		
	FUEL OIL	FRESH WATER	DRILL WATER	OIL BASED MUD	BRINE	BASE OIL
FUEL (12)	126.8 148.2 148 148 47 49.2 87.9 87.9 41.7 41 22.9 44.6					
FRESH WATER (8)		118.9 1.9.9 148.1 148.1 34.1 34.1 22.6 197				
DRILL WATER (11)			105.8 69.5 50.7 99.1 99.1 99.3 99.3 115 170.3 99.3 99.3			
OBM (10)				623.3 x 2 624.5 x 8		
BRINE (10)					623.3 x 2 624.5 x 8	
BASE OIL (2)						632 632
TOTAL	994	813	1,107	6,244	6,244	1,264