



**GULF TEAL as shown  
GULF MALLARD similar**

**Vessel Characteristics**

Length, Overall:	105 ft	32 m
Beam:	34.5 ft	10.5 m
Depth:	18 ft	5.5 m
Maximum Draft:	13.8 ft	4.2 m
Minimum Height:	69.2 ft	21.1 m
Freeboard:	4.2 ft	1.3 m
Displacement:	780 lt	800 mt
Deadweight:	340 lt	350 mt
Deck Strength:	540 lb/ft <sup>2</sup>	2.6 t/m <sup>2</sup>

Class Notations:

ABS: A1, TOWING VESSEL, AMS, ABCU

# **TIDEWATER<sup>®</sup>**

## **GULF MALLARD**

**50T Bollard Pull  
Azimuthing Stern Drive Tug**

# TIDEWATER<sup>®</sup> GULF MALLARD

## Capacities

Fuel Oil:	68,500 gal	260 m <sup>3</sup>
Potable Water:	11,400 gal	43.3 m <sup>3</sup>
Drill/Ballast Water:	18,300 gal	69.3 m <sup>3</sup>
Oil Dispersant:	6,510 gal	24.6 m <sup>3</sup>
Fire Fighting Foam:	4,060 gal	15.4 m <sup>3</sup>

## Machinery

Main Engines (2):	Wartsila 6 R25		
Total HP:	4,200		
Propellers (2):	Aquamaster ST 2001 90.6 dia		
Kort Nozzles:	2		
Primary Generators (2):	120 kw	410 v	50 hz
Driven by:	CAT 3306 DIT		

## Performance

(Approximate values assuming Ideal Conditions)

*Fuel Consumption Vs Speed*

Cruising:	20 m <sup>3</sup> /day (220 gph) @ 12 knots	
Range @ 12 Knots:	3,750 nm	
Bollard Pull	58.5 st	53.1 mt

## Deck Equipment

Anchor(s) (2):	1455 lbs Stockless Bower
Anchor Chain:	150 m of 22 mm chain per side
Windlass:	Winch/Windlass 5T@20M/MIN (80T Brake)
Capstans (1):	4 t A RIM

## Tow/Anchor Handling

Winch:	Single Drum (100T Brake)
Model:	ATW-1010
Line Pull:	10 mt

## Navigation /Communication Equipment

Radar(s):	1
Depth Sounder:	1
Radio:	2 x VHF; 1 x SSB

## Accommodations

N <sup>o</sup> of Berths:	10
1-man cabins:	2
2-man cabins:	2
4-man cabins:	1
Certified to Carry:	10
Galley seating:	8

## Special Equipment

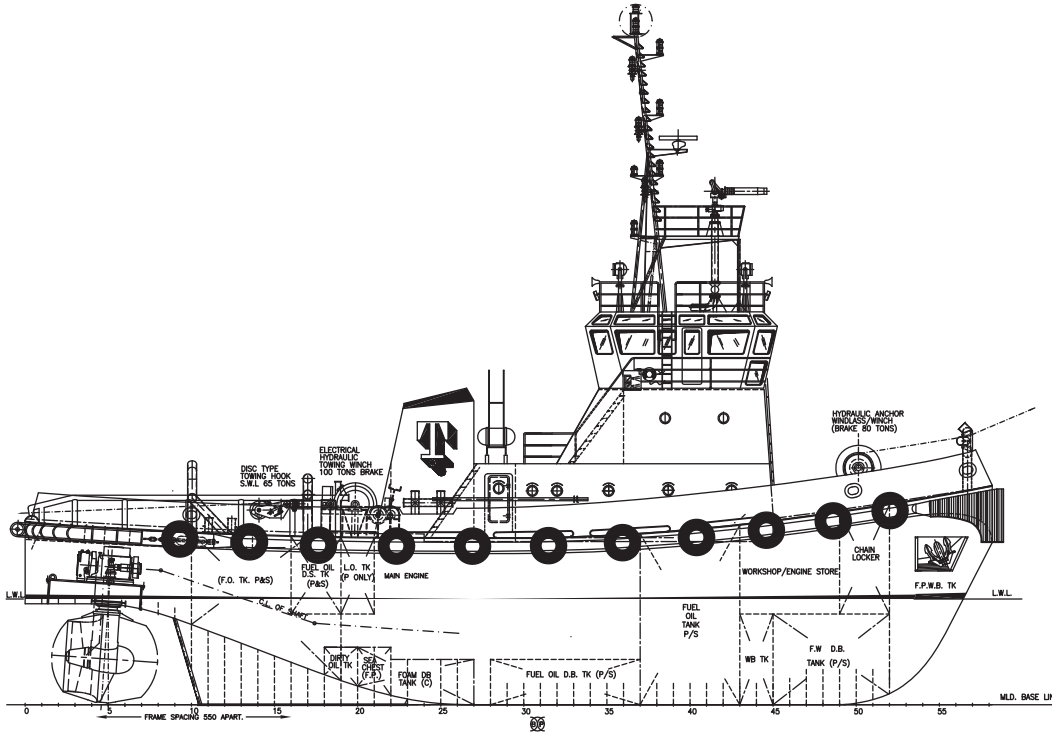
Oil Dispersant System:	2x3.5m Booms
Firefighting:	Yes

## Registration

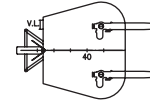
Flag:	VANUATU	
IMO N <sup>o</sup> :	9170119	
Year Built:	1998	
Builder:	PRESIDENT MARINE PTE LTD	
Call Sign:	YJRC6	
Tonnage (ITC):	411 GT	123 NT

# TIDEWATER<sup>®</sup> GULF MALLARD

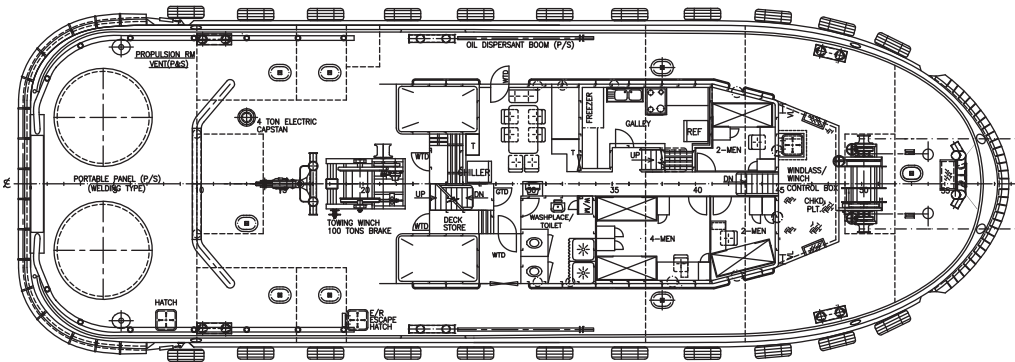
General Arrangement (Current configuration may vary.)



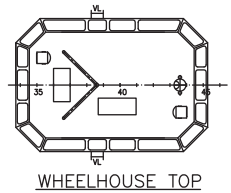
OUTBOARD PROFILE



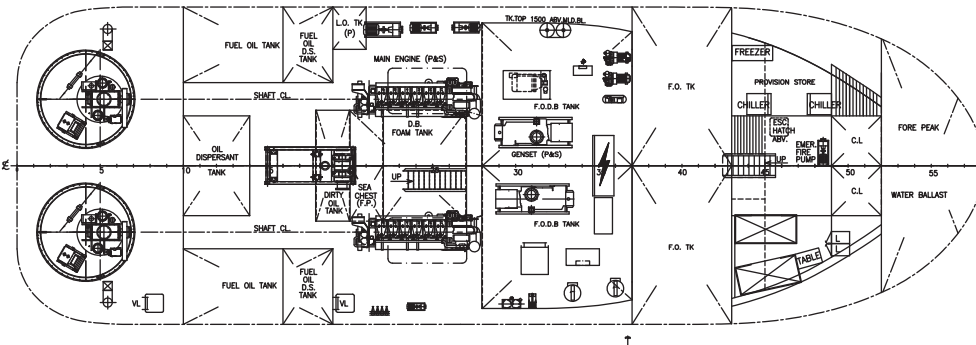
MONITORS PLATFORM



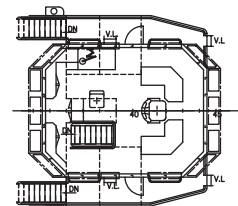
MAIN DECK PLAN



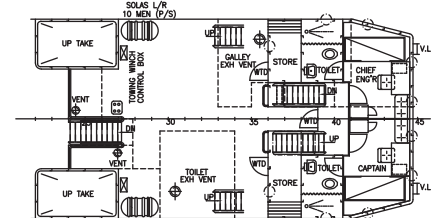
WHEELHOUSE TOP



BELOW DECK PLAN



NAV. BRIDGE DECK



BRIDGE DECK PLAN

NOTICE: The data contained herein is provided for convenience of reference to allow users to determine the suitability of the Company's equipment. The data may vary from the current condition of equipment which can only be determined by physical inspection. Company has exercised due diligence to insure that the data contained herein is reasonably accurate. However, Company does not warrant the accuracy or completeness of the data. In no event shall Company be liable for any damages whatsoever arising out of the use or inability to use the data contained herein.

## Capacity Table

Tank	Contents	Volume m <sup>3</sup>	Base Oil	Fuel Oil	Dry Bulk	DW/WB	Potable Water	Fresh Water	Brine	Liquid Mud	Methanol	Lube Oil	Foam	Oil Disp.
FP WB Tank C	DW/WB	53.5				53.5								
WB Tank P	DW/WB	9.6				9.6								
WB Tank S	DW/WB	6.2				6.2								
FW DB Tk P	Ship's FW	21.7					21.7							
FW DB Tk S	Ship's FW	21.7					21.7							
No 1 FO Tk P	FO	76.3		76.3										
No 1 FO Tk S	FO	76.3		76.3										
No 2 FO DB Tk P	FO	23.6		23.6										
No 2 FO DB Tk S	FO	23.6		23.6										
No 3 FO Tk P	FO	29.8		29.8										
No 3 FO Tk S	FO	29.8		29.8										
FO Day Tk P	FO	9.9		9.9										
FO Day Tk S	FO	9.9		9.9										
Lube Oil Tk (P)	LO	3.6										3.6		
Foam Tank	Foam	15.4											15.4	
Dispersant Tk (C)	Disp.	24.7												24.7
Total Volume [m <sup>3</sup> ]			0.0	279.2	0.0	69.3	43.3	0.0	0.0	0.0	0.0	3.6	15.4	24.7
Spec Sheet Total Volume [m <sup>3</sup> ]			0.0	259.4	0.0	69.3	43.3	0.0	0.0	0.0	0.0	3.6	15.4	24.7

\*Capacities shown are for lead vessel. Actual capacities may vary slightly.

\*Capacities shown in **RED** are excluded from the total volume.

\*Capacities shown in **BLUE** are included in another Tank's Capacity.

\*Capacities shown in **GREEN** are counted for multiple Tank Capacities.