

# FORTUNE TIDE



VS 485 PSV

## Vessel Characteristics

Length, Overall:	280.8 ft	85.6 m
Beam:	65.6 ft	20 m
Depth:	28.2 ft	8.6 m
Maximum Draft:	23.5 ft	7.2 m
Light Draft:	10.7 ft	3.3 m
Minimum Height:	93.8 ft	28.6 m
Freeboard:	4.7 ft	1.4 m
Displacement:	8,570 lt	8,710 mt
Deadweight:	5,440 lt	5,530 mt
Clear Deck Space:	197 x 55 ft	60 x 17 m
Clear Deck Area:	10,300 ft <sup>2</sup>	960 m <sup>2</sup>
Deck Strength AFT:	2,050 lb/ft <sup>2</sup>	10 t/m <sup>2</sup>
Class Notations:	DNV: +1A1, Standby vessel(S), Battery(Power), Clean(Design), COMF(C-3, V-3), DK(+), DYNPOS(AUTR), EO, HL(2.8), Ice(C), LFL(*), NAUT(OSV(A)), OILREC, SF	

## Capacities

Deck Cargo:	2,710 lt	2,750 t
Fuel Oil:	196,000 gal	740 m <sup>3</sup>
Potable Water:	85,900 gal	330 m <sup>3</sup>
Fresh Water:	136,000 gal	510 m <sup>3</sup>
Drill/Ballast Water:	646,000 gal	2,450 m <sup>3</sup>
Bulk Tanks (6 tanks):	11,700 ft <sup>3</sup>	330 m <sup>3</sup>
Liquid Mud (2.8 SG*):	4,350 bbl	690 m <sup>3</sup>
*Max Structural Specific Gravity		
Methanol:	1,620 bbl	260 m <sup>3</sup>
Base Oil:	1,280 bbl	200 m <sup>3</sup>
Brine:	2,630 bbl	420 m <sup>3</sup>
Fire Fighting Foam:	790 gal	3 m <sup>3</sup>

## TIDEWATER

Find out more

[tdw.com](https://tdw.com)

Pg.2 Further Specifications

Pg.4 Capacity Table

Pg.3 General Arrangement

Pg.5 DP Capability Plot

**NOTICE:** The data contained herein is provided for convenience of reference to allow users to determine the suitability of the Company's equipment. The data may vary from the current condition of equipment which can only be determined by physical inspection. Company has exercised due diligence to insure that the data contained herein is reasonably accurate. However, Company does not warrant the accuracy or completeness of the data. In no event shall Company be liable for any damages whatsoever arising out of the use or inability to use the data contained herein.

LAST UPDATE: 11/10/2023

Machinery

Diesel Electric Hybrid Vessel	560 kWh Battery		
Propulsive/Total HP:	5,900 / 8,930		
Z-Drives:	Yes		
Propellers (2):	STEERPROP SP 35 CRP, 2200KW		
Primary Generators (4):	1,660 kw	690 v	60 hz
Driven by:	WARTSILA 9L20		
Emergency Generators (1):	180 kw	690 v	60 hz
Driven by:	VOLVO D9 MG RC		
Bow Thruster (3):	2x FU-74-LTC-2000 TT, 1x AR63LNC DD		
Driven by:	2x 1000KW, 1x 880KW ELECTRIC MOTORS		
Total Thrust:	35.9 st	32.6 mt	

Deck Equipment

Anchors (2):	4050 KG SPEK
Anchor Chain:	260 m of 50 mm chain per side
Windlass:	2x 17 MT NDM AW50MMK3
Crane (1):	3 t @ 18 m
Capstans (2):	10 t NDM CA-10
Tugger (2):	15 t NDM TU-15

Accommodations

No. of Berths:	22
Cabins:	12x1-man & 5x2-man
Certified to Carry:	22
Galley seating:	12
Hospital:	Yes

Registration

Flag: NORWAY	Home Port: SKUDENESHAVN
Hull Number: 360	IMO N <sup>o</sup> : 9683659
Year Built: 2013	Call Sign: LGCJ
Builder:	Kleven Verft AS
Tonnage (ITC):	4560 GT1723 NT

Performance\*

Fuel Consumption Vs Speed		
Maximum:	24 m³/day (260 gph) @ 15.5 knots	
Cruising:	13 m³/day (140 gph) @ 13 knots	
Economical:	11 m³/day (120 gph) @ 11 knots	
Standby:	2 m³/day (22 gph) @ 0 knots	
Range @ 13 Knots:	17,700 nm	
Transfer Rates		
Fuel Oil:	660 gpm @ 300 ft	150 m³/h @ 92 m
Fresh Water:	660 gpm @ 300 ft	150 m³/h @ 92 m
Drill/Ballast Water:	660 gpm @ 300 ft	150 m³/h @ 92 m
Bulk:	32.4 cfm @ 220 ft	55 m³/h @ 60 m
Liquid Mud:	440 gpm @ 800 ft	100 m³/h @ 240 m
Base Oil:	440 gpm @ 300 ft	100 m³/h @ 92 m
Brine:	440 gpm @ 800 ft	100 m³/h @ 240 m
Methanol:	330 gpm @ 300 ft	75 m³/h @ 92 m

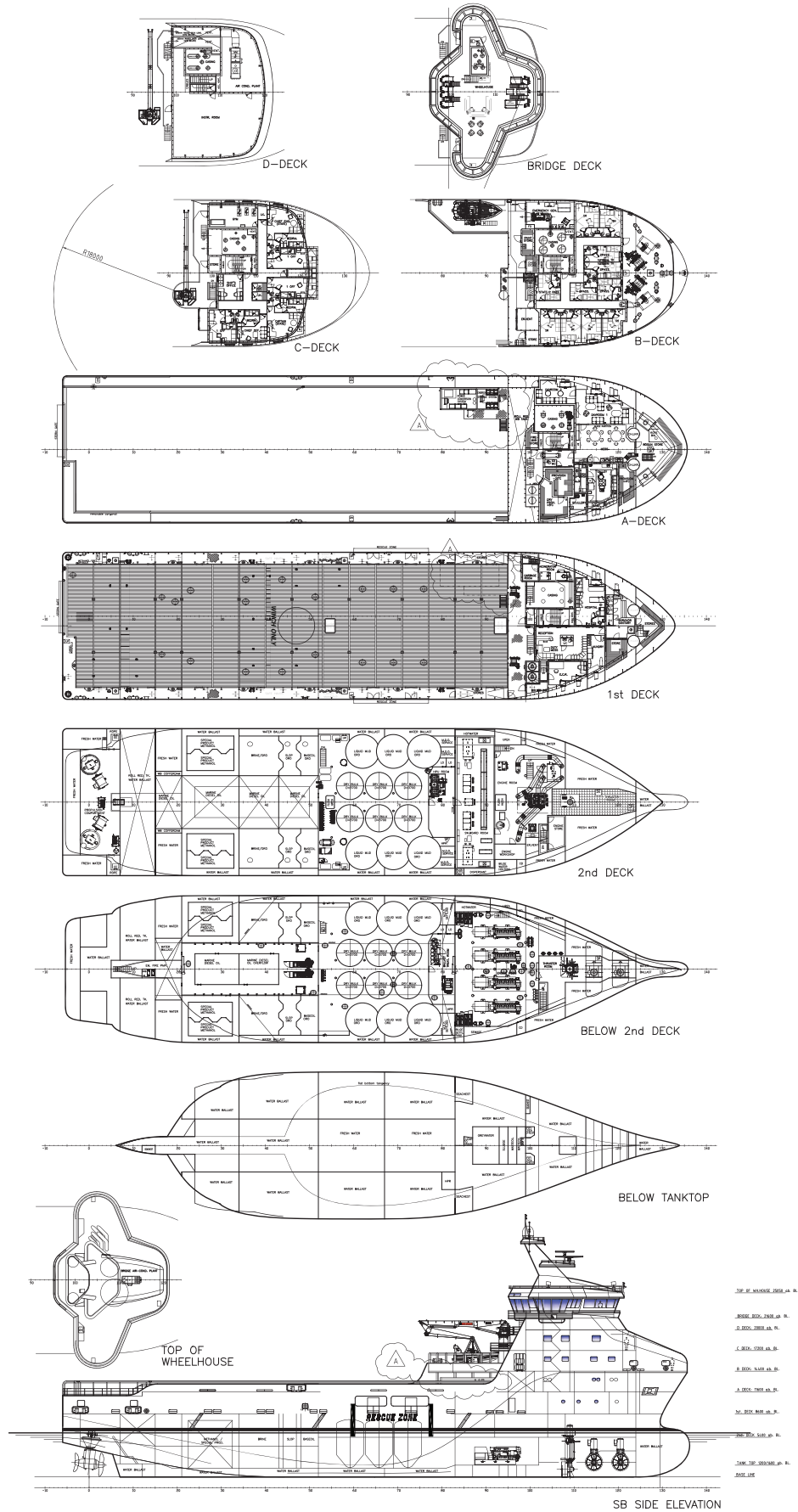
Nav/Comms Equipment

Radar(s):	2
Depth Sounder:	1
Gyro Compass:	3
Wind Speed Indicators:	2
Doppler Log:	1
Radio:	4 x VHF; 1 x SSB
Sat Com:	2X INMARSAT-C

Special Equipment

Dynamic Positioning:	DP-2
Ref. Systems:	3 x MRU; 2 x DGPS 1 x Microwave-based; 1 x Laser-based
Mud Mixers:	Yes
Tank Cleaning:	Yes
Rescue Zone:	Yes
Rescue Boat:	10-Man Norsafe MAKO 655 FRC
Reefer Sockets:	14x 220V 16A
Misc:	HPR Trunk; ORO Capacity - 1758.2 m³; Special Prod. Capacity - 2576 m³; MSD - 23 Persons; Oil Detection Radar

\*Approximate values assuming Ideal Conditions





Tank	Contents	Volume m <sup>3</sup>	Base Oil	Fuel Oil	Dry Bulk	DW/WB	Potable Water	Fresh Water	Brine	Liquid Mud	Methanol	Lube Oil	Foam	Oil Disp.
01 FOREPEAK C	DW/WB	108.5				108.5								
201 WB/DW DB TK PS	DW/WB	84.2				84.2								
202 WB/DW DB TK SB	DW/WB	85.6				85.6								
203 WB/DW DB TK SB	DW/WB	71.8				71.8								
204 WB/DW DB TK SB	DW/WB	73.9				73.9								
231 ROLL RED TK C	DW/WB	150.7				150.7								
303 WB/DW DB TK PS	DW/WB	74.3				74.3								
304 WB/DW DB TK SB	DW/WB	68.3				68.3								
305 WB/DW DB TK PS	DW/WB	73.9				73.9								
306 WB/DW DB TK SB	DW/WB	73.9				73.9								
31 WB TK PS	DW/WB	74.5				74.5								
32 WB TK SB	DW/WB	74.5				74.5								
33 WB TK PS	DW/WB	68.6				68.6								
34 WB TK SB	DW/WB	68.6				68.6								
402 WB/DW DB TK C	DW/WB	90.7				90.7								
403 WB/DW DB TK PS	DW/WB	77.1				77.1								
404 WB/DW DB TK SB	DW/WB	77.1				77.1								
41 WB TK PS	DW/WB	76.8				76.8								
42 WB TK PS	DW/WB	76.8				76.8								
501 SKEG TK C	DW/WB	147.9				147.9								
64 ROLL RED TK C	DW/WB	485.2				485.2								
73 AFT PEAK DB TK C	DW/WB	54.0				54.0								
71 AFT WG TK PS	FW	43.2				43.2		43.2						
72 AFT WG TK SB	FW	41.3				41.3		41.3						
74 FW STERN TK C	FW	125.5				125.5		125.5						
11 FW DEEP TK PS	Ship's FW	162.6					162.6							
12 FW DEEP TK SB	Ship's FW	162.6					162.6							
21 FW WING TK PS	FW	56.7						56.7						
22 FW WING TK SB	FW	56.2						56.2						
301 FW DB TK C	FW	84.3						84.3						
302 FW DB TK C	FW	76.6						76.6						
61 FW DEEP TK PS	FW	120.1						120.1						
62 FW DEEP TK SB	FW	120.1						120.1						
216P FO EMER GEN	FO	2.0		2.0										
217P FO LOOSE TK INCIN.	FO	1.9		1.9										
321P FO SETTL 1	FO	23.0		23.0										
322S FO SETTL 2	FO	23.0		23.0										
323P FO SERVICE 1	FO	10.6		10.6										
324S FO SERVICE 3	FO	10.6		10.6										
339P FO SERVICE 2	FO	9.1		9.1										
340S FO SERVICE 4	FO	9.1		9.1										
410 FO OVERFLOW C	FO	65.4		65.4										
411 FO DEEP TK C	FO	167.7		167.7										
412 FO DEEP TK C	FO	167.7		167.7										
510 FO DEEP TK C	FO	295.6		295.6										
63 FO DEEP TK C	FO	111.8		111.8										
421 BO/ORO PS	BO/ORO	101.9	101.9											
422 BO/ORO SB	BO/ORO	101.9	101.9											
425 BRI/ORO PS	BRI/ORO	209.0							209.0					
426 BRI/ORO SB	BRI/ORO	209.0							209.0					
325 LM/ORO 1P	LM/ORO	118.0								118.0				
326 LM/ORO 1S	LM/ORO	118.0								118.0				
327 LM/ORO 2P	LM/ORO	114.0								114.0				
328 LM/ORO 2S	LM/ORO	114.0								114.0				
329 LM/ORO 3P	LM/ORO	114.0								114.0				
330 LM/ORO 3S	LM/ORO	114.0								114.0				
521 METH/SPEC P PS	METH/SPEC P/ORO	73.2									73.2			
522 METH/SPEC P SB	METH/SPEC P/ORO	73.2									73.2			
523 METH/SPEC P PS	METH/SPEC P/ORO	55.6									55.6			
524 METH/SPEC P SB	METH/SPEC P/ORO	55.6									55.6			
DRY BULK 2P	DRY BULK	55.0			55.0									
DRY BULK 2S	DRY BULK	55.0			55.0									
DRY BULK 3P	DRY BULK	55.0			55.0									
DRY BULK 3S	DRY BULK	55.0			55.0									
DRY BULK 4P	DRY BULK	55.0			55.0									
DRY BULK 4S	DRY BULK	55.0			55.0									
335 LO TK 1P	LO	4.5										4.5		
336 LO TK 2P	LO	4.9										4.9		
337 LO TK 3P	LO	5.5										5.5		
338 LO TK 4P	LO	6.3										6.3		
75 LO TK 2nd DK P	LO	3.5										3.5		
215 LO TK A DECK P	LO	0.6										0.6		
FOAM TANK	FOAM	3.0											3.0	
214 DISPERSANT SB	DISP.	12.6												12.6
Total Volume [m <sup>3</sup> ]			203.8	897.5	330.0	2,446.9	325.2	724.0	418.0	692.0	257.6	25.3	3.0	12.6
Spec Sheet Total Volume [m <sup>3</sup> ]			203.8	742.8	330.0	2,446.9	325.2	514.0	418.0	692.0	257.6	25.3	3.0	12.6

\*Capacities shown are for lead vessel. Actual capacities may vary slightly.

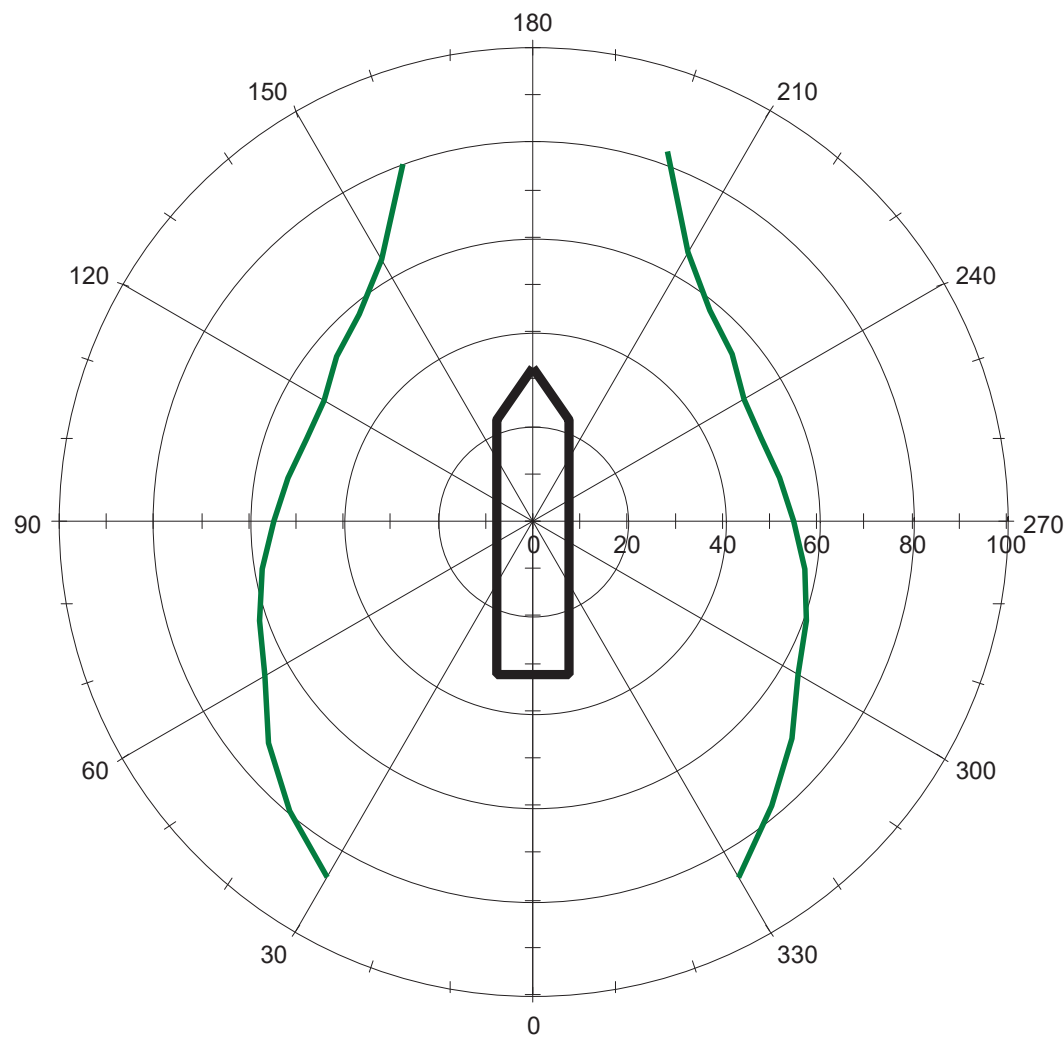
\*Capacities shown in **RED** are excluded from the total volume.

\*Capacities shown in **BLUE** are included in another Tank's Capacity.

\*Capacities shown in **GREEN** are counted for multiple Tank Capacities.



Ship: 4230 VS485 MkII PSV  
Run : All thrusters in operation



Wind [knots] (truncated at 97.2 knots)

External:  
Variable wind velocity rotating 360 deg  
1.50 knots wind generated current rotating 360 deg  
Variable wave height rotating 360 deg