

SKIPPER TIDE



VS 4420 PSV

Vessel Characteristics

Length, Overall:	303.2 ft	92.4 m
Beam:	72.2 ft	22 m
Depth:	28.2 ft	8.6 m
Maximum Draft:	23.2 ft	7.1 m
Light Draft:	10 ft	3.1 m
Minimum Height:	81.4 ft	24.8 m
Freeboard:	5.1 ft	1.5 m
Displacement:	10,100 lt	10,260 mt
Deadweight:	6,500 lt	6,610 mt
Clear Deck Space:	218 x 62 ft	66 x 19 m
Clear Deck Area:	12,900 ft ²	1,200 m ²
Deck Strength AFT:	2,050 lb/ft ²	10 t/m ²
Class Notations:	DNV: +1A1, Standby vessel(S), Clean, COMF(C-3, V-3), DK(+), DYNPOS(AUTR), EO, HL(2.8), LFL(*), NAUT(OSV(A)), OILREC, SF	

Capacities

Deck Cargo:	4,630 lt	4,700 t
Fuel Oil:	284,000 gal	1,080 m ³
Potable Water:	58,600 gal	220 m ³
Fresh Water:	197,000 gal	740 m ³
Drill/Ballast Water:	787,000 gal	2,980 m ³
Bulk Tanks (8 tanks):	15,300 ft ³	430 m ³
Liquid Mud (2.8 SG*):	4,060 bbl	640 m ³
<small>*Max Structural Specific Gravity</small>		
Methanol:	1,350 bbl	210 m ³
Base Oil:	1,430 bbl	230 m ³
Brine:	4,090 bbl	650 m ³
Fire Fighting Foam:	1,060 gal	4 m ³

TIDEWATER

Find out more

tdw.com

Pg.2 Further Specifications
Pg.3 General Arrangement

Pg.4 Capacity Table
Pg.5 DP Capability Plot



Machinery

Diesel Electric Vessel			
<i>Propulsive/Total HP:</i>	9,390 / 13,000		
Z-Drives:	Yes		
Propellers (2):	AZIPULL, 3500KW		
Primary Generators (4):	2,400 kw	690 v	60 hz
<i>Driven by:</i>	WARTSILA		
Emergency Generators (1):	370 kw	450 v	60 hz
<i>Driven by:</i>	CAT 3408TA/SRA4-584		
Bow Thruster (3):	1x TT2200 DPN CP, 1x UL 1201/4940 DD, 1x TCNS 73/50-180 SWING DOWN		
<i>Driven by:</i>	1x 1200KW, 1x 880KW, 1x 1000KW ELECTRIC MOTORS		
Total Thrust:	51.6 st	46.8 mt	

Deck Equipment

Anchors (2):	4050 KG SPEC
Anchor Chain:	260 m of 50 mm chain per side
Windlass:	2x Hydrakraft HK-D-52K3
Crane (2):	3 t @ 13 m
Capstans (2):	10 t Hydrakraft
Tugger (2):	15 t Hydrakraft

Accommodations

No. of Berths:	22
Cabins:	14x1-man & 4x2-man
Certified to Carry:	22
Galley seating:	12
Hospital:	Yes

Registration

Flag: ISLE OF MAN	Home Port: DOUGLAS
Hull Number: 184	IMO N^o: 9331268
Year Built: 2005	Call Sign: MSQK6
Builder:	Flekkfjord Slipp & Maskinfabrikk A/S
Tonnage (ITC):	4978 GT / 1493 NT

Performance*

Fuel Consumption Vs Speed		
<i>Maximum:</i>	32 m ³ /day (350 gph) @ 15.5 knots	
<i>Cruising:</i>	22 m ³ /day (240 gph) @ 13 knots	
<i>Economical:</i>	12 m ³ /day (130 gph) @ 11 knots	
<i>Standby:</i>	2.5 m ³ /day (27.5 gph) @ 0 knots	
Range @ 13 Knots:	16,800 nm	
Transfer Rates		
<i>Fuel Oil:</i>	660 gpm @ 300 ft	150 m ³ /h @ 92 m
<i>Fresh Water:</i>	660 gpm @ 300 ft	150 m ³ /h @ 92 m
<i>Drill/Ballast Water:</i>	660 gpm @ 300 ft	150 m ³ /h @ 92 m
<i>Bulk:</i>	31.8 cfm @ 200 ft	54 m ³ /h @ 61 m
<i>Liquid Mud:</i>	550 gpm @ 840 ft	120 m ³ /h @ 250 m
<i>Base Oil:</i>	330 gpm @ 300 ft	75 m ³ /h @ 92 m
<i>Brine:</i>	660 gpm @ 750 ft	150 m ³ /h @ 230 m
<i>Methanol:</i>	330 gpm @ 300 ft	75 m ³ /h @ 92 m

Nav/Comms Equipment

Radar(s):	2
Depth Sounder:	1
Gyro Compass:	3
Wind Speed Indicators:	2
Doppler Log:	1
Radio:	3 x VHF; 2 x SSB
Sat Com:	STARLINK, 2X INMARSAT-C

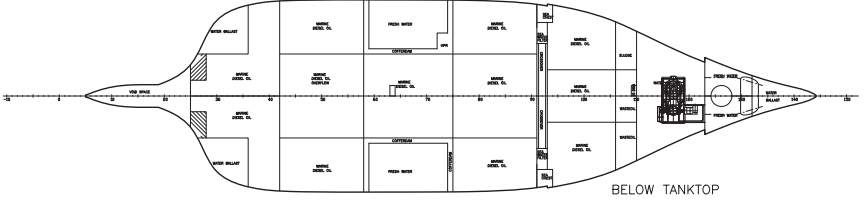
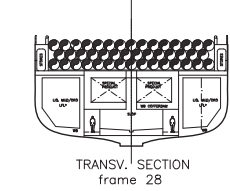
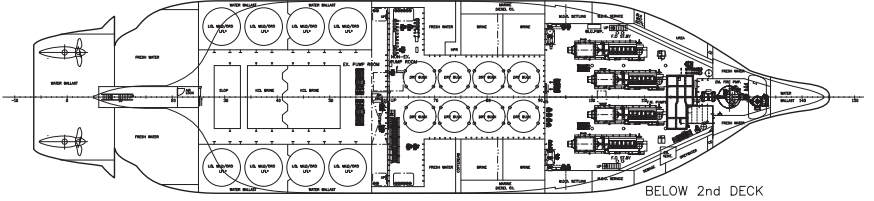
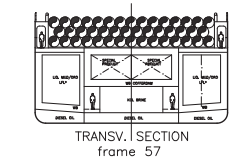
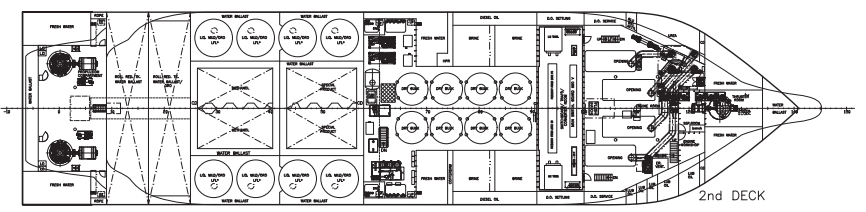
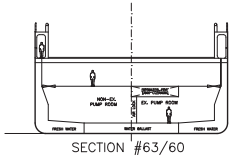
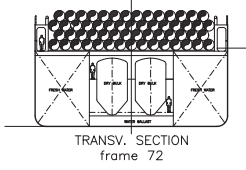
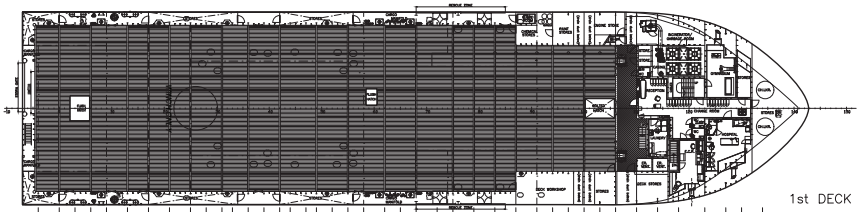
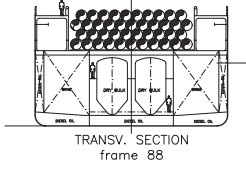
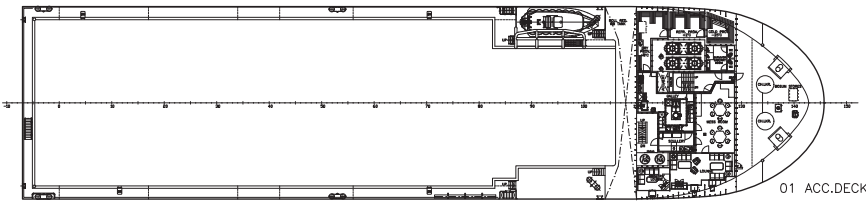
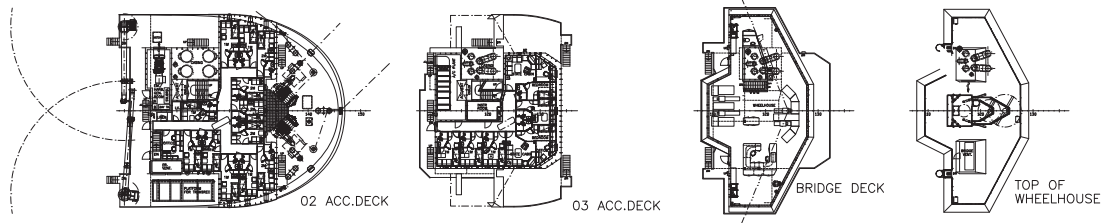
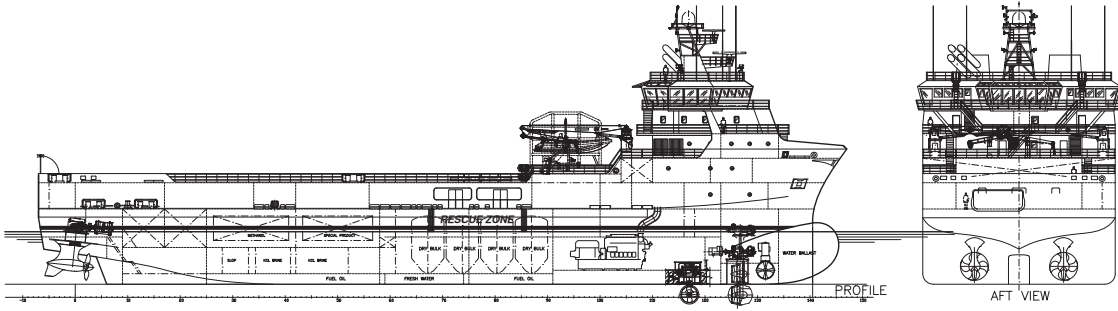
Special Equipment

Dynamic Positioning:	DP-2
Ref. Systems:	2 x MRU; 2 x DGPS 2 x Laser-based, 1 x Microwave-based
Water Maker:	1x 25T/Day
Mud Mixers:	Yes
Tank Cleaning:	Yes
Rescue Zone:	Yes
Rescue Boat:	10-Man FGTC 900-2VD FRB
Misc:	ORO Capacity - 1099.5 m ³ ; DACON SCOOP; MSD, HPR TRUNK; Special Prod. Capacity - 204.1 m ³ ; WINCHING ZONE

*Approximate values assuming Ideal Conditions

SKIPPER TIDE

General Arrangement (Current configuration may vary.)





Tank	Contents	Volume m ³	Base Oil	Fuel Oil	Dry Bulk	DW/WB	Potable Water	Fresh Water	Brine	Liquid Mud	Methanol	Lube Oil	Foam	Oil Disp.
01 FOREPEAK TK C	DW/WB	121.1				121.1								
205 WB/DW DB TK C	DW/WB	80.6				80.6								
231 ROLL RED TK C	DW/WB	170.8				170.8								
412 WB CD TK C	DW/WB	246.4				246.4								
41 WB CD TK P	DW/WB	220.6				220.6								
42 WB CD TK S	DW/WB	220.6				220.6								
512 WB CD TK C	DW/WB	258.1				258.1								
51 WB CD TK P	DW/WB	250.1				250.1								
52 WB CD TK S	DW/WB	250.1				250.1								
611 ROLL RED TK C	DW/WB/ORO	454.7				454.7								
612 ROLL RED TK C	DW/WB	434.2				434.2								
73 AFT PEAK TK C	DW/WB	150.2				150.2								
71 FW AFT WG TK P	FW	60.5				60.5		60.5						
72 FW AFT WG TK S	FW	60.5				60.5		60.5						
11 FW DEEP TK P	Ship's FW	111.0					111.0							
12 FW DEEP TK S	Ship's FW	111.0					111.0							
303 FW DB TK P	FW	62.5						62.5						
304 FW DB TK S	FW	65.2						65.2						
33 FW DEEP TK P	FW	192.2						192.2						
34 FW DEEP TK S	FW	202.7						202.7						
601 FW DB TK P	FW	111.1						111.1						
602 FW DB TK S	FW	111.1						111.1						
203 FO DB TK P	FO	72.7		72.7										
204 FO DB TK S	FO	72.7		72.7										
208 FO DB TK C	FO	78.0		78.0										
25 FO SERVICE P	FO	48.7		48.7										
26 FO SERVICE S	FO	48.7		48.7										
27 FO SETTLL P	FO	69.5		69.5										
28 FO SETTLL S	FO	69.5		69.5										
301 FO DB TK P	FO	73.0		73.0										
302 FO DB TK S	FO	73.0		73.0										
305 FO DB TK C	FO	108.9		108.9										
306 FO DB TK C	FO	114.9		114.9										
31 FO WG TK P	FO	99.6		99.6										
32 FO WG TK S	FO	99.6		99.6										
401 FO DB TK P	FO	75.3		75.3										
402 FO DB TK S	FO	75.3		75.3										
403 FO OVERFLOW C	FO	108.9		108.9										
501 FO DB TK P	FO	66.6		66.6										
502 FO DB TK S	FO	66.6		66.6										
321 BRI TK P	BRI	172.8							172.8					
322 BRI TK S	BRI	172.8							172.8					
323 BRI TK P	BRI	152.0							152.0					
324 BRI TK S	BRI	152.0							152.0					
411 KCL BRI TK C	BO/KCL BRI	134.7	134.7											
511 KCL BRI TK C	BO/KCL BRI	92.0	92.0											
513 METH TK P	METH	102.0									102.0			
514 METH TK S	METH	112.3									112.3			
421 LM/ORO TK 1P	LM/ORO	80.6								80.6				
422 LM/ORO TK 1S	LM/ORO	80.6								80.6				
423 LM/ORO TK 2P	LM/ORO	80.6								80.6				
424 LM/ORO TK 2S	LM/ORO	80.6								80.6				
521 LM/ORO TK 3P	LM/ORO	80.6								80.6				
522 LM/ORO TK 3S	LM/ORO	80.6								80.6				
523 LM/ORO TK 3P	LM/ORO	80.6								80.6				
524 LM/ORO TK 3S	LM/ORO	80.6								80.6				
311 DRY BULK 1P	DRY BULK	54.0			54.0									
312 DRY BULK 1S	DRY BULK	54.0			54.0									
313 DRY BULK 2P	DRY BULK	54.0			54.0									
314 DRY BULK 2S	DRY BULK	54.0			54.0									
315 DRY BULK 3P	DRY BULK	54.0			54.0									
316 DRY BULK 3S	DRY BULK	54.0			54.0									
317 DRY BULK 4P	DRY BULK	54.0			54.0									
318 DRY BULK 4S	DRY BULK	54.0			54.0									
FOAM TANK	FOAM	4.0											4.0	
211 LO STORE TK S	LO	16.8										16.8		
212 LO STORE TK S	LO	16.9										16.9		
213 LO STORE TK S	LO	7.7										7.7		
214 LO STORE TK S	LO	6.8										6.8		
215 LO STORE TK S	LO	5.7										5.7		
413 SPEC PROD TK P	SPEC P.	95.6												
414 SPEC PROD TK S	SPEC P.	108.5												
Total Volume [m ³]			226.7	1,421.5	432.0	2,978.5	222.0	865.8	649.6	644.8	214.3	53.9	4.0	0.0
Spec Sheet Total Volume [m ³]			226.7	1,076.2	432.0	2,978.5	222.0	744.8	649.6	644.8	214.3	53.9	4.0	0.0

*Capacities shown are for lead vessel. Actual capacities may vary slightly.

*Capacities shown in RED are excluded from the total volume.

*Capacities shown in BLUE are included in another Tank's Capacity.

*Capacities shown in GREEN are counted for multiple Tank Capacities.



KONGSBERG

DP Capability Plot

NORMAND SKIPPER

Case number : 1
 Case description : All thrusters
 Thrusters active : T1-T5
 Rudders active :

Input file reference : Foot_1839_C.scv
 Last modified : 2011-03-18 12.30 (v. 2.8.0)

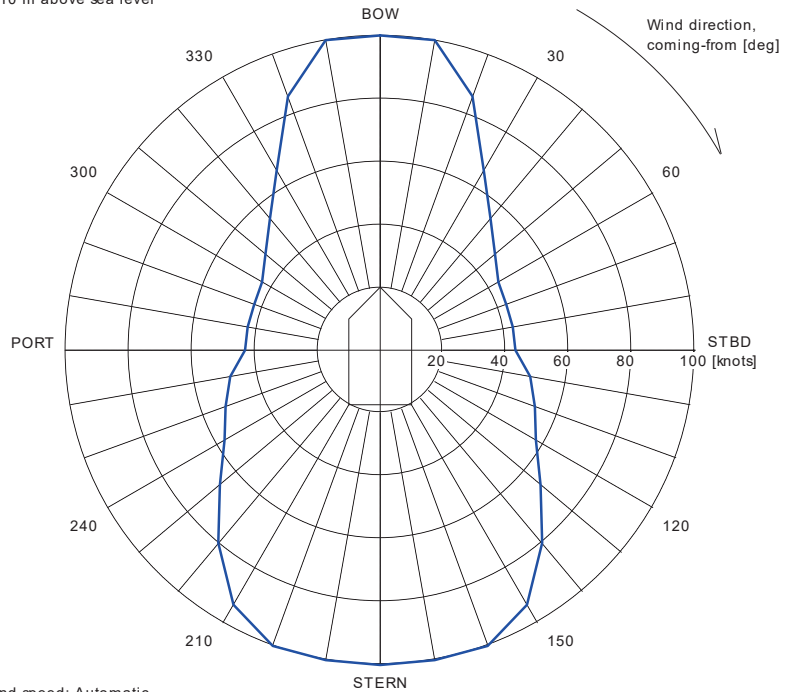
Length overall : 92.4 m
 Length between perpendiculars : 84.3 m
 Breadth : 22.0 m
 Draught : 6.0 m
 Displacement : 10299.0 t (Cb = 0.90)
 Longitudinal radius of inertia : 21.1 m (= 0.25 * Lpp)
 Pos. of origin ahead of Lpp/2 (Xo) : 0.0 m
 Wind load coefficients : Calculated (Blendermann)
 Current load coefficients : Calculated (Strip-theory)
 Wave-drift load coefficients : Database (Scaled by Breadth/Length)

Tidal current direction offset : 0.0 deg
 Wave direction offset : 0.0 deg
 Wave spectrum type : Pierson-Moskowitz
 Wind spectrum type : NPD
 Current - wave-drift interaction : OFF
 Load dynamics allowance : 1.0 * STD of thrust demand
 Additional surge force : 0.0 tf
 Additional sway force : 0.0 tf
 Additional yawing moment : 0.0 tf.m
 Additional force direction : Fixed
 Density of salt water : 1026.0 kg/m³
 Density of air : 1.226 kg/m³ (15 °C)

Power limitations : OFF
 Thrust loss calculation : OFF

#	Thruster	X [m]	Y [m]	F+ [tf]	F- [tf]	Max [%]	Pe [kW]	Rudder
1	TUNNEL	36.8	0.0	12.0	-12.0	100	980	
2	AZIMUTH	33.8	0.0	12.0	-3.5	100	740	
3	AZIMUTH	28.1	0.0	16.3	-9.5	100	1000	
4	AZIMUTH	-42.2	5.1	41.0	-33.3	100	3500	
5	AZIMUTH	-42.2	-5.1	41.0	-33.3	100	3500	

VARIABLE WIND AND WAVES
 Limiting 1 minute mean wind speed in knots
 at 10 m above sea level



Wind speed: Automatic
 Significant wave height: IMCA (North Sea)
 Mean zero up-crossing period: IMCA (North Sea)

Rotating tidal current: 1.50 knots
 Rotating wind induced current: 0.000*Uwi knots

Figure 10: DP capability envelope for case 1.