

# SYMPHONY TIDE



NORMAND AURORA as shown, SYMPHONY TIDE similar

## P 105 PSV CLASS

### Vessel Characteristics

Length, Overall:	282.8 ft	86.2 m
Beam:	62.3 ft	19 m
Depth:	26.3 ft	8 m
Maximum Draft:	21.9 ft	6.7 m
Minimum Height:	110 ft	33.2 m
Freeboard:	4.4 ft	1.3 m
Displacement:	8,940 lt	9,080 mt
Deadweight:	4,850 lt	4,930 mt
Clear Deck Space:	195 x 53 ft	60 x 16 m
Clear Deck Area:	10,300 ft <sup>2</sup>	960 m <sup>2</sup>
Deck Strength FWD:	1,020 lb/ft <sup>2</sup>	5 t/m <sup>2</sup>
Deck Strength AFT:	2,050 lb/ft <sup>2</sup>	10 t/m <sup>2</sup>
Class Notations:	DNV: +1A1, Clean, COMF(V-3), DK(+), DYN-POS(AUTR), EO, HL(2.5), LFL(*), SF	

### Capacities

Deck Cargo:	2,660 lt	2,700 t
Fuel Oil:	394,000 gal	1,490 m <sup>3</sup>
Potable Water:	115,000 gal	430 m <sup>3</sup>
Fresh Water:	79,800 gal	300 m <sup>3</sup>
Drill/Ballast Water:	449,000 gal	1,700 m <sup>3</sup>
Bulk Tanks (6 tanks):	10,200 ft <sup>3</sup>	290 m <sup>3</sup>
Liquid Mud (2.5 SG*):	5,260 bbl	840 m <sup>3</sup>
<small>*Max Structural Specific Gravity</small>		
Methanol:	1,030 bbl	160 m <sup>3</sup>
Base Oil:	1,920 bbl	310 m <sup>3</sup>
Brine:	5,060 bbl	800 m <sup>3</sup>
Fire Fighting Foam:	480 gal	1.8 m <sup>3</sup>

## TIDEWATER

Find out more

[tdw.com](http://tdw.com)

Pg.2 Further Specifications

Pg.4 Capacity Table

Pg.3 General Arrangement

Pg.5 DP Capability Plot

# SYMPHONY TIDE

## Further specifications



### Machinery

<b>Diesel Electric Vessel</b>			
<i>Propulsive/Total HP:</i>	6,700 / 9,790		
<b>Z-Drives:</b>	Yes		
<b>Propellers (2):</b>	RR US 305/4470, 2500KW FPP		
<b>Primary Generators (4):</b>	1,820 kw	440 v	60 hz
<i>Driven by:</i>	CAT 3516TA-B		
<b>Emergency Generators (1):</b>	190 kw	440 v	60 hz
<i>Driven by:</i>	CAT 3306TA		
<b>Bow Thruster (2):</b>	1x FU-80-LTC-2250 TT, 1x TCNS 73/50-180 Swing Down		
<i>Driven by:</i>	895KW ELECTRIC MOTOR		
<b>Total Thrust:</b>	30 st	27.2 mt	

### Deck Equipment

<b>Anchors (2):</b>	3060 KG SPEK
<b>Anchor Chain:</b>	250 m of 44 mm chain per side
<b>Windlass:</b>	9.5T RR LBFMG6-304-4-C
<b>Crane (1):</b>	2 t @ 8.2 m
<b>Aux. Crane (1):</b>	1.5 t @ 15 m
<b>Capstans (2):</b>	10 t Hydrakraft 200 252
<b>Tugger (2):</b>	10 t Hydrakraft 200 850

### Accommodations

<b>No. of Berths:</b>	24
<b>Cabins:</b>	12x1-man & 6x2-man
<b>Certified to Carry:</b>	24
<b>Galley seating:</b>	15
<b>Hospital:</b>	Yes

### Registration

<b>Flag:</b> ISLE OF MAN	<b>Home Port:</b> DOUGLAS
<b>Hull Number:</b> 266	<b>IMO N°:</b> 9288253
<b>Year Built:</b> 2003	<b>Call Sign:</b> MSQL2
<b>Builder:</b>	ULSTEIN VERFT AS
<b>Tonnage (ITC):</b>	3743 GT / 1151 NT

### Performance\*

<b>Fuel Consumption Vs Speed</b>		
<i>Maximum:</i>	25.5 m <sup>3</sup> /day (280 gph) @ 15 knots	
<i>Cruising:</i>	13.2 m <sup>3</sup> /day (150 gph) @ 12 knots	
<i>Economical:</i>	8.9 m <sup>3</sup> /day (98 gph) @ 10 knots	
<i>Standby:</i>	2.6 m <sup>3</sup> /day (28.6 gph) @ 0 knots	
<b>Range @ 12 Knots:</b>	32,500 nm	
<b>Transfer Rates</b>		
<i>Fuel Oil:</i>	1,100 gpm @ 300 ft	250 m <sup>3</sup> /h @ 92 m
<i>Fresh Water:</i>	1100 gpm @ 300 ft	250 m <sup>3</sup> /h @ 92 m
<i>Drill/Ballast Water:</i>	1100 gpm @ 300 ft	250 m <sup>3</sup> /h @ 92 m
<i>Bulk:</i>	28.3 cfm @ 200 ft	48 m <sup>3</sup> /h @ 61 m
<i>Liquid Mud:</i>	440 gpm @ 600 ft	100 m <sup>3</sup> /h @ 180 m
<i>Base Oil:</i>	1100 gpm @ 300 ft	250 m <sup>3</sup> /h @ 92 m
<i>Brine:</i>	660 gpm @ 600 ft	150 m <sup>3</sup> /h @ 180 m
<i>Methanol:</i>	440 gpm @ 300 ft	100 m <sup>3</sup> /h @ 92 m

### Nav/Comms Equipment

<b>Radar(s):</b>	2
<b>Depth Sounder:</b>	1
<b>Cyro Compass:</b>	3
<b>Wind Speed Indicators:</b>	2
<b>Doppler Log:</b>	1
<b>Radio:</b>	4 x VHF; 1 x SSB
<b>Sat Com:</b>	2X INMARSAT-C

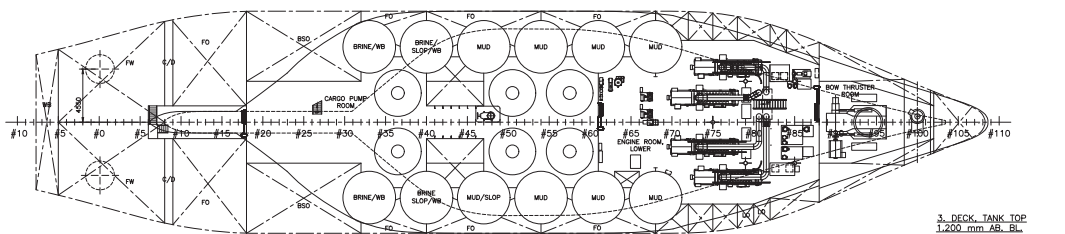
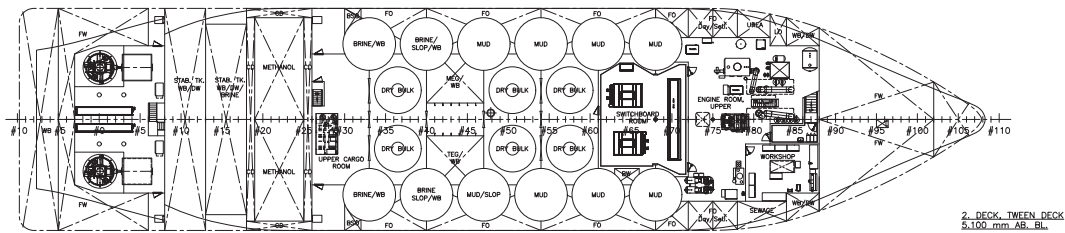
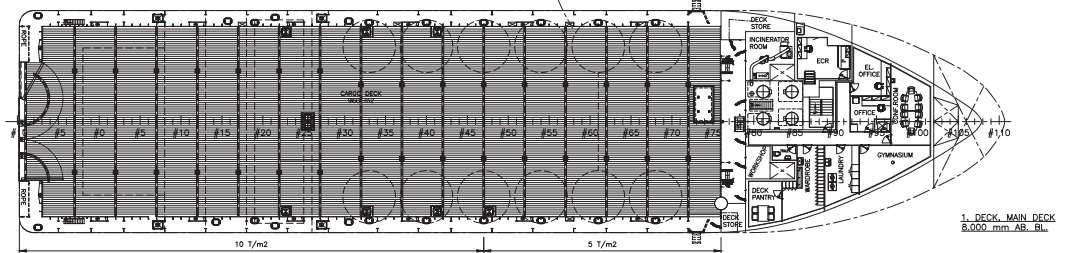
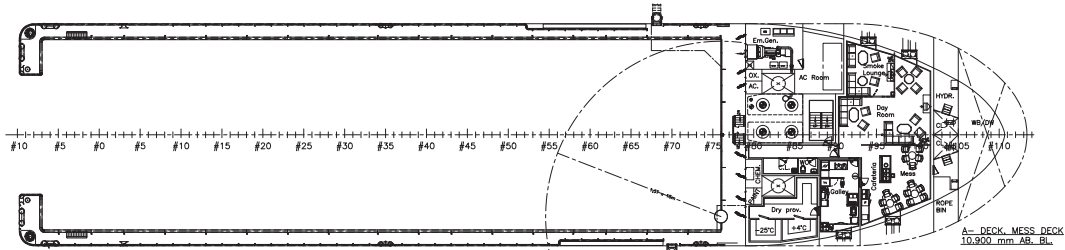
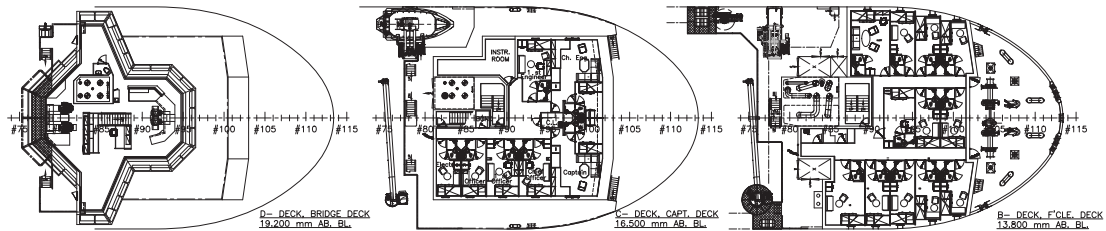
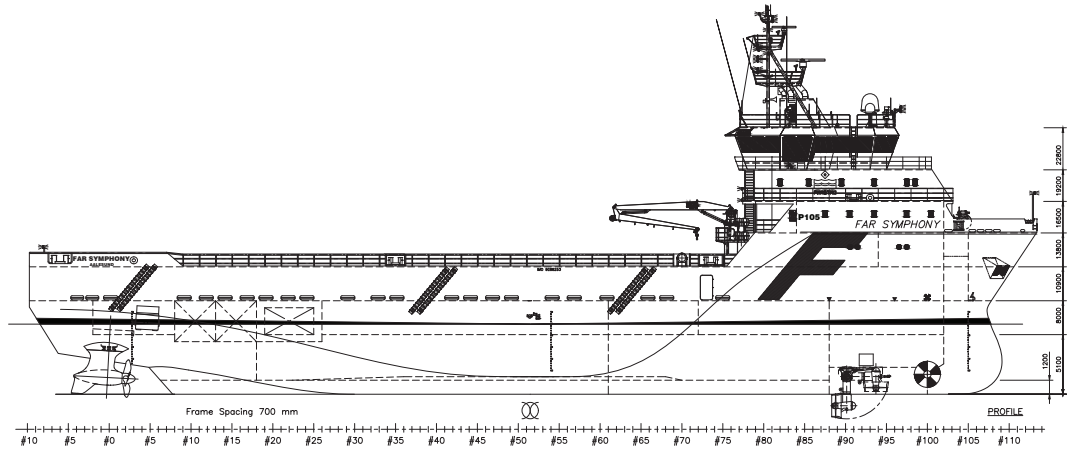
### Special Equipment

<b>Dynamic Positioning:</b>	DP-2
<i>Ref. Systems:</i>	2 x MRU; 2 x DGPS 1 x Microwave-based; 1 x Laser-based
<b>Mud Circulation System/ Mud Mixers:</b>	Yes/Yes
<b>Tank Cleaning:</b>	Yes
<b>Rescue Boat:</b>	10-Man FRC
<b>Misc:</b>	Glycol Capacity - 202.6 m <sup>3</sup> ; MSD - 20 Persons

\*Approximate values assuming Ideal Conditions

# SYMPHONY TIDE

## General Arrangement (Current configuration may vary.)





# SYMPHONY TIDE

## DP Capability Plot

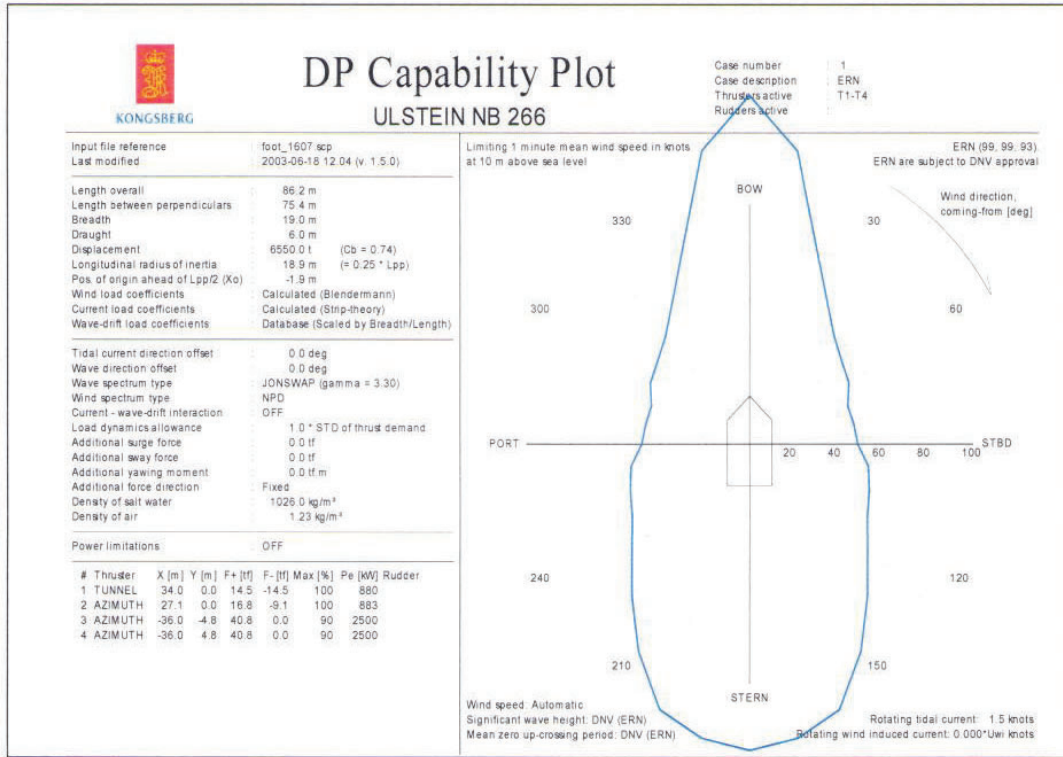


Figure 10: DP capability envelope for case 1.