



LUCY TIDE as shown, MERCY TIDE similar

## ALUCAT 1605 FAST CREWBOAT

### Vessel Characteristics

Length, Overall:	52.5 ft	16 m
Beam:	17.7 ft	5.4 m
Depth:	6.2 ft	1.9 m
Maximum Draft:	3 ft	0.9 m
Minimum Height:	32.8 ft	10 m
Freeboard:	3.3 ft	1 m
Displacement:	30 lt	30 mt
Deadweight:	5 lt	5 mt
Clear Deck Space:	12 x 7.6 ft	3.8 x 2.3 m
Clear Deck Area:	150 ft <sup>2</sup>	14 m <sup>2</sup>
Deck Strength:	100 lb/ft <sup>2</sup>	0.5 t/m <sup>2</sup>
Class Notations:	BUREAU VERITAS: Special service / Fast Utility Vessel sea area 2	

### Capacities

Deck Cargo:	2 lt	2 t
Fuel Oil:	530 gal	2 m <sup>3</sup>
Fresh Water:	52.8 gal	0.2 m <sup>3</sup>

## TIDEWATER

Find out more

[tdw.com](http://tdw.com)

Pg.2 Further Specifications

Pg.3 General Arrangement



Machinery

Main Engines (2):	Caterpillar C18		
Total HP:	1,340		
Propellers (2):	Rolls Royce FF375S		
Primary Generators (1):	12 kw	230 v	50 hz
Driven by:	Caterpillar C1.5		

Performance\*

Fuel Consumption Vs Speed	
Maximum:	5.3 m³/day (58.3 gph) @ 30 knots
Cruising:	3.9 m³/day (42.9 gph) @ 26 knots
Economical:	2.6 m³/day (28.6 gph) @ 22 knots
Standby:	0.1 m³/day (1.1 gph) @ 0 knots
Range @ 30 Knots:	210 nm

Deck Equipment

Anchors (1):	H.H.P.
--------------	--------

Nav/Comms Equipment

Radar(s):	2
Depth Sounder:	1
Cyro Compass:	1
Radio:	2 x VHF; 1 x SSB

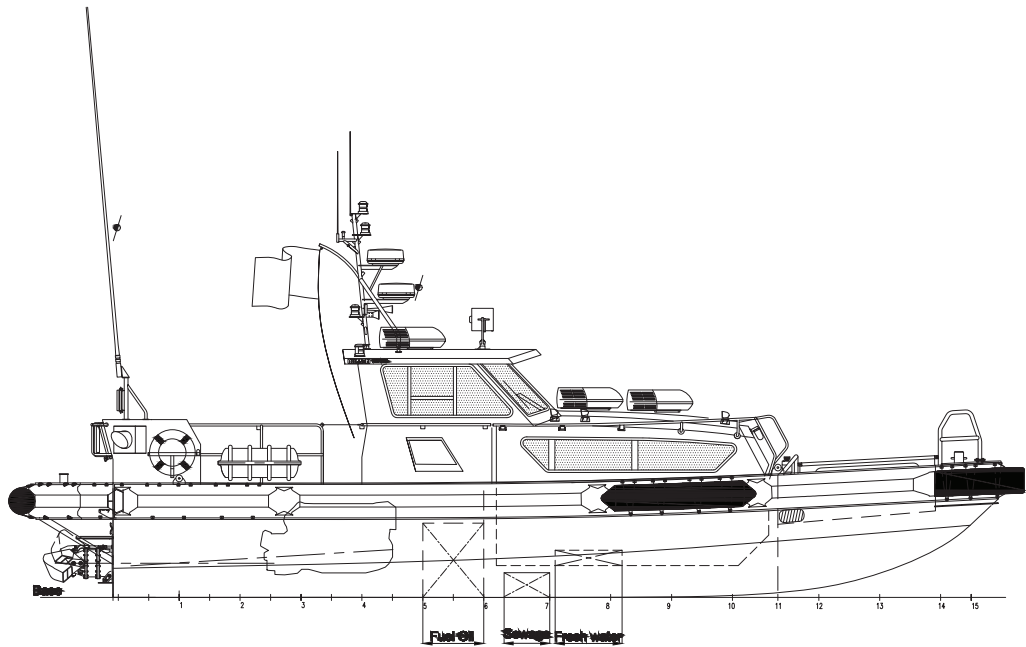
Accommodations

Passenger Seats:	28
Certified to Carry:	30

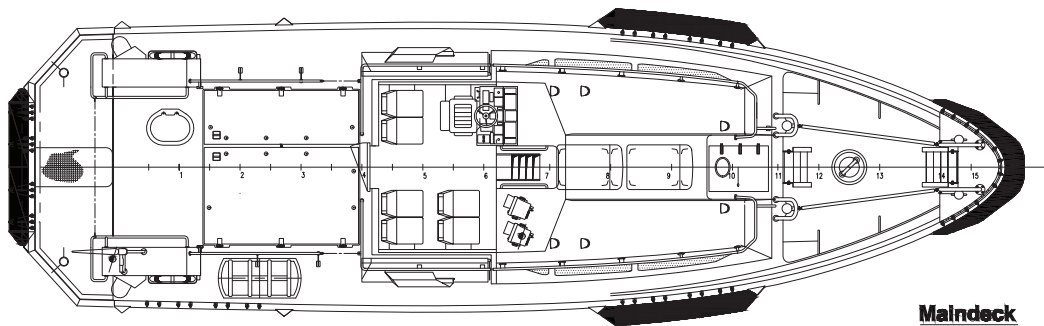
Registration

Flag: MARSHALL ISLANDS	Home Port: MAJURO
Year Built: 2013	Call Sign: V7EZ6
Builder:	Damen Shipyards, Gorinche
Tonnage (ITC):	23 GT6 NT

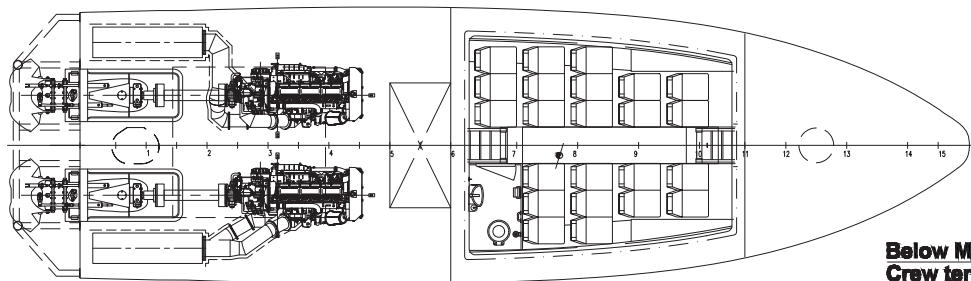
\*Approximate values assuming Ideal Conditions



Profile

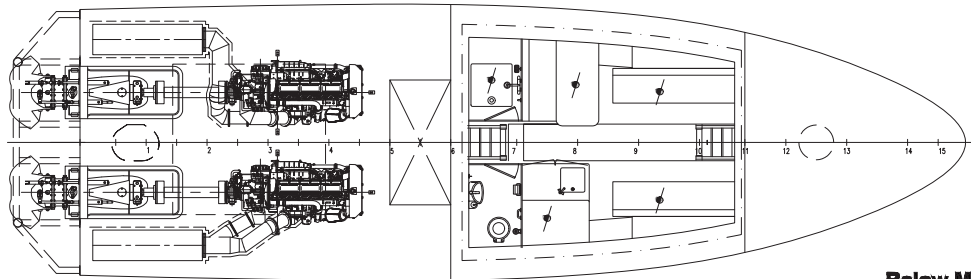


Maindeck



Below Maindeck  
Crew tender version

Total passenger capacity : 29



Below Maindeck  
Optional patrol boat version