

# MALAIKA TIDE



LUCY TIDE as shown, MALAIKA TIDE similar

## ALUCAT 1605 FAST CREWBOAT

### Vessel Characteristics

|                   |   |                      |
|-------------------|---|----------------------|
| Length, Overall:  | 52.5 ft   | 16 m                 |
| Beam:             | 17.7 ft   | 5.4 m                |
| Depth:            | 6.2 ft  | 1.9 m                |
| Maximum Draft:    | 3 ft  | 0.9 m                |
| Minimum Height:   | 32.8 ft   | 10 m                 |
| Freeboard:        | 3.3 ft  | 1 m                  |
| Displacement:     | 30 lt   | 30 mt                |
| Deadweight:       | 5 lt  | 5 mt                 |
| Clear Deck Space: | 12 x 7.6 ft   | 3.8 x 2.3 m          |
| Clear Deck Area:  | 150 ft <sup>2</sup>   | 14 m <sup>2</sup>    |
| Deck Strength:    | 100 lb/ft <sup>2</sup>  | 0.5 t/m <sup>2</sup> |
| Class Notations:  | BUREAU VERITAS: Special service / Fast Utility Vessel<br>sea area 2 |                      |

### Capacities

|              |          |                    |
|--------------|----------|--------------------|
| Deck Cargo:  | 2 lt     | 2 t                |
| Fuel Oil:    | 530 gal  | 2 m <sup>3</sup>   |
| Fresh Water: | 52.8 gal | 0.2 m <sup>3</sup> |

## TIDEWATER

Find out more

[tdw.com](https://tdw.com)

Pg.2 Further Specifications

Pg.3 General Arrangement

**NOTICE:** The data contained herein is provided for convenience of reference to allow users to determine the suitability of the Company's equipment. The data may vary from the current condition of equipment which can only be determined by physical inspection. Company has exercised due diligence to insure that the data contained herein is reasonably accurate. However, Company does not warrant the accuracy or completeness of the data. In no event shall Company be liable for any damages whatsoever arising out of the use or inability to use the data contained herein.



## Machinery

|                                |                    |       |       |
|--------------------------------|--------------------|-------|-------|
| <b>Main Engines (2):</b>       | Caterpillar C18    |       |       |
| <i>Total HP:</i>               | 1,340              |       |       |
| <b>Propellers (2):</b>         | Rolls Royce FF375S |       |       |
| <b>Primary Generators (1):</b> | 12 kw              | 230 v | 50 hz |
| <i>Driven by:</i>              | Caterpillar C15    |       |       |

## Performance\*

| Fuel Consumption Vs Speed |   |
|---------------------------|---|
| <i>Maximum:</i>           | 5.3 m <sup>3</sup> /day (58.3 gph) @ 30 knots |
| <i>Cruising:</i>          | 3.9 m <sup>3</sup> /day (42.9 gph) @ 26 knots |
| <i>Economical:</i>        | 2.6 m <sup>3</sup> /day (28.6 gph) @ 22 knots |
| <i>Standby:</i>           | 0.1 m <sup>3</sup> /day (1.1 gph) @ 0 knots   |
| <b>Range @ 30 Knots:</b>  | 210 nm  |

## Deck Equipment

|                     |        |
|---------------------|--------|
| <b>Anchors (1):</b> | H.H.P. |
|---------------------|--------|

## Nav/Comms Equipment

|                       |                  |
|-----------------------|------------------|
| <b>Radar(s):</b>      | 2                |
| <b>Depth Sounder:</b> | 1                |
| <b>Cyro Compass:</b>  | 1                |
| <b>Radio:</b>         | 2 x VHF; 1 x SSB |

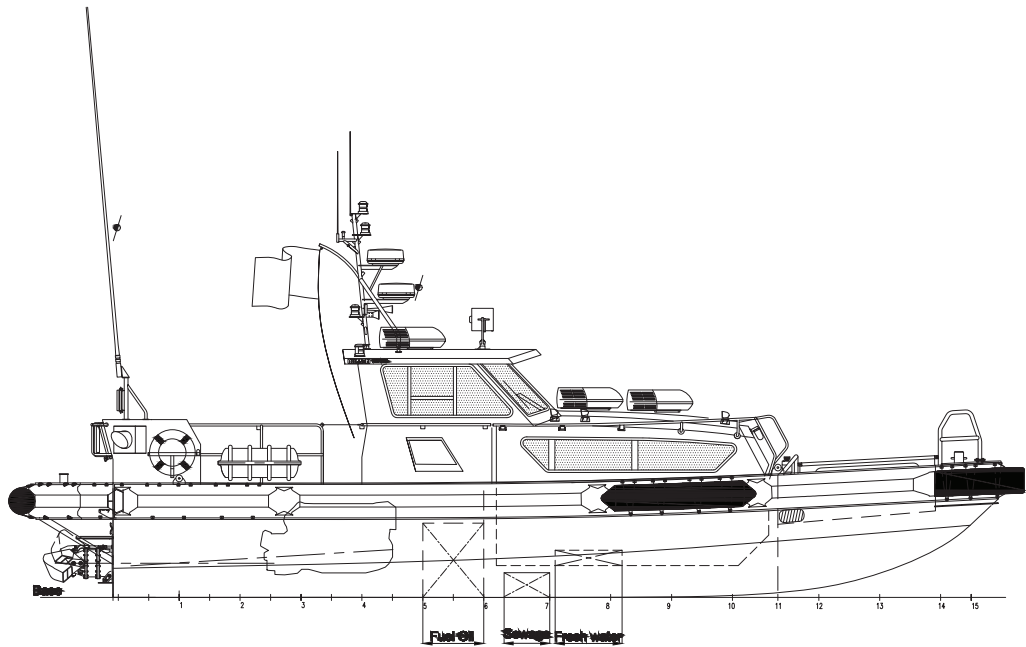
## Accommodations

|                            |    |
|----------------------------|----|
| <b>Passenger Seats:</b>    | 28 |
| <b>Certified to Carry:</b> | 30 |

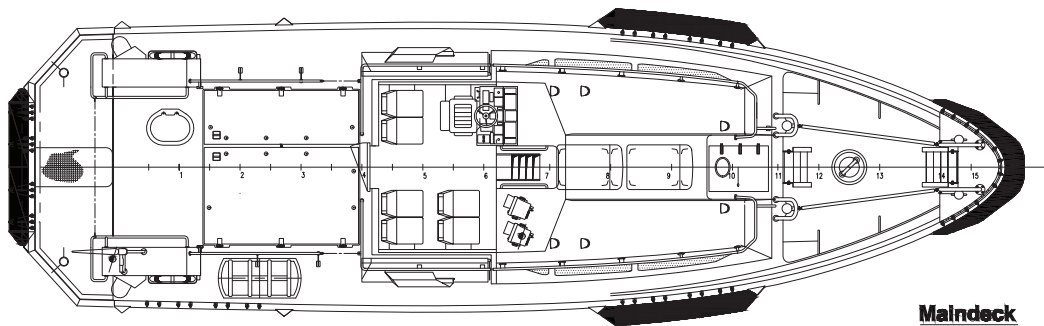
## Registration

|                               |                           |
|-------------------------------|---------------------------|
| <b>Flag:</b> MARSHALL ISLANDS | <b>Home Port:</b> MAJURO  |
| <b>Year Built:</b> 2013       | <b>Call Sign:</b> V7EO3   |
| <b>Builder:</b>               | Damen Shipyards, Gorinche |
| <b>Tonnage (ITC):</b>         | 23 GT 6 NT                |

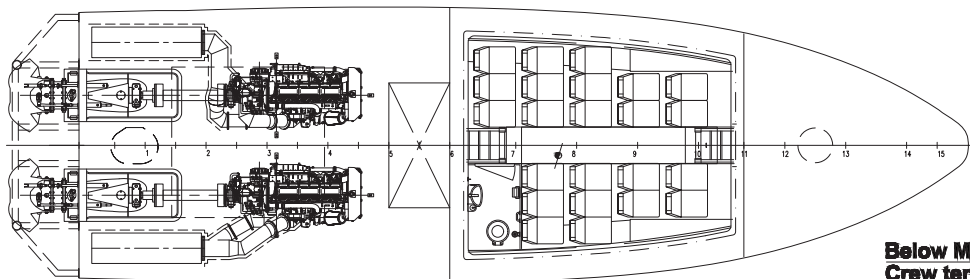
\*Approximate values assuming Ideal Conditions



Profile

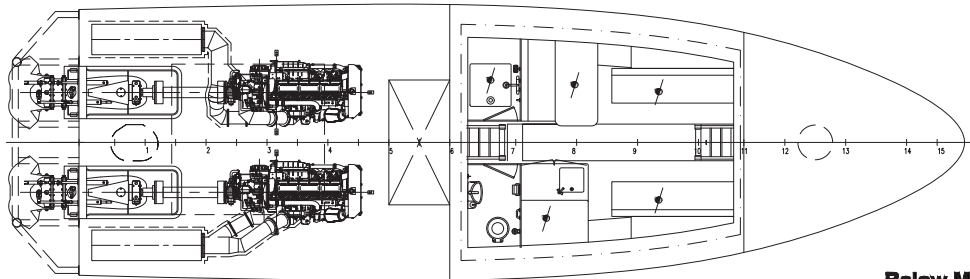


Maindeck



Below Maindeck  
Crew tender version

Total passenger capacity : 29



Below Maindeck  
Optional patrol boat version