

DEVON TIDE



SHANNON TIDE as shown, DEVON TIDE similar

FCS 1605 FRP FAST CREWBOAT

Vessel Characteristics

Length, Overall:	52.5 ft	16 m
Beam:	14.8 ft	4.5 m
Depth:	6.6 ft	2 m
Maximum Draft:	3 ft	0.9 m
Minimum Height:	22.3 ft	6.8 m
Freeboard:	3.5 ft	1.1 m
Displacement:	25 lt	25 mt
Deadweight:	6 lt	6 mt
Clear Deck Space:	11 x 9.2 ft	3.3 x 2.8 m
Clear Deck Area:	92 ft ²	8.5 m ²
Deck Strength:	51 lb/ft ²	0.3 t/m ²
Class Notations:	BUREAU VERITAS: I +HULL MACH CREWBOAT SEA AREA 3	

Capacities

Deck Cargo:	1 lt	1 t
Fuel Oil:	500 gal	1.9 m ³
Fresh Water:	84.3 gal	0.3 m ³

TIDEWATER

Find out more

tdw.com

Pg.2 Further Specifications

Pg.3 General Arrangement



Machinery

Main Engines (2):	CAT C18		
<i>Total HP:</i>	1,340		
Propellers (2):	HAMILTON HTX-30 WATERJETS		
Primary Generators (1):	10 kw	230 v	50 hz
<i>Driven by:</i>	CAT C1.5		

Performance*

Fuel Consumption Vs Speed	
<i>Maximum:</i>	6.6 m ³ /day (72.4 gph) @ 24 knots
<i>Cruising:</i>	5.6 m ³ /day (61.6 gph) @ 20 knots
<i>Economical:</i>	4.6 m ³ /day (50.4 gph) @ 18 knots
<i>Standby:</i>	0.1 m ³ /day (1.2 gph) @ 0 knots
Range @ 20 Knots:	160 nm

Deck Equipment

Anchors (1):	14.5 KG FORTRESS FX-55
Anchor Chain:	10 m of 10 mm chain per side

Nav/Comms Equipment

Radar(s):	1
Depth Sounder:	1
Radio:	2 x VHF

Accommodations

Passenger Seats:	30
Certified to Carry:	31

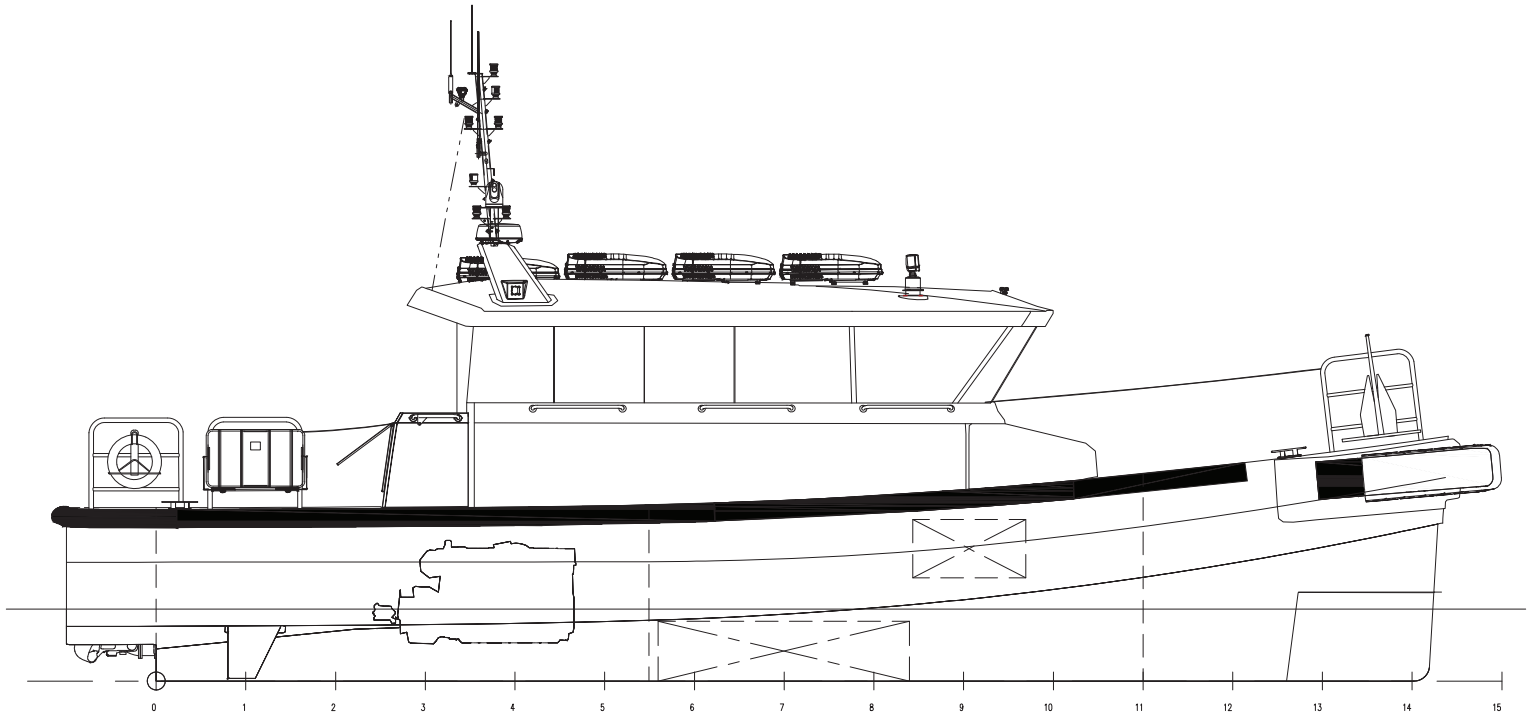
Special Equipment

Misc:	*Fuel and water shown for ship's use.
--------------	---------------------------------------

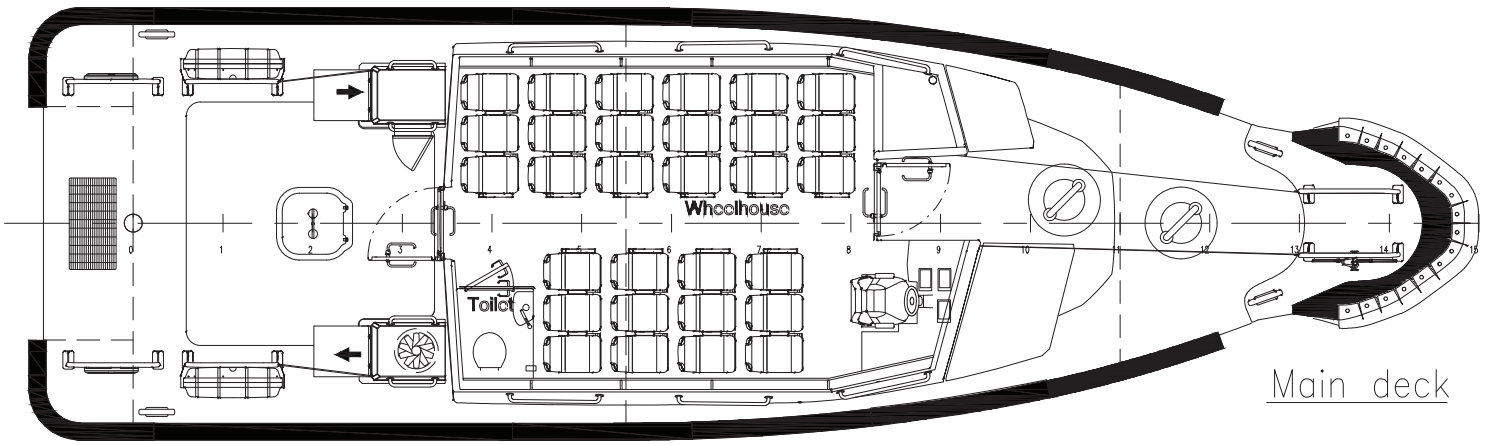
Registration

Flag: LIBERIA	Home Port: MONROVIA
Year Built: 2024	Call Sign: 5LSM5
Builder:	DAMEN SHIPYARDS ANTALYA
Tonnage (ITC):	36 GT 10 NT

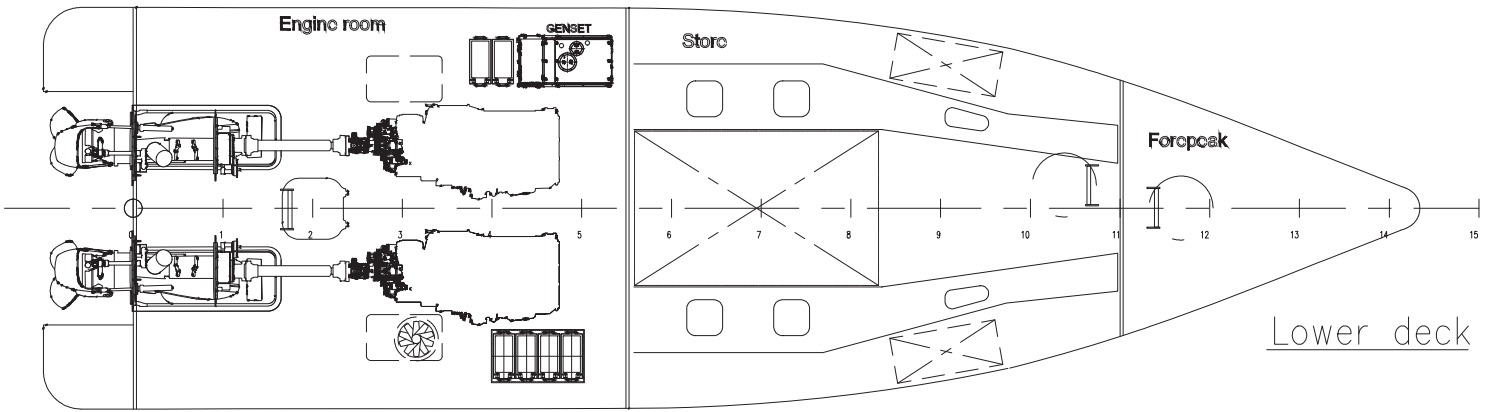
*Approximate values assuming Ideal Conditions



Profile



Main deck



Lower deck

SHANNON TIDE



FCS 1605 FRP FAST CREWBOAT

Vessel Characteristics

Length, Overall:	52.5 ft	16 m
Beam:	14.8 ft	4.5 m
Depth:	6.6 ft	2 m
Maximum Draft:	3 ft	0.9 m
Minimum Height:	22.3 ft	6.8 m
Freeboard:	3.6 ft	1.1 m
Displacement:	25 lt	25 mt
Deadweight:	6 lt	6 mt
Clear Deck Space:	11 x 9.2 ft	3.3 x 2.8 m
Clear Deck Area:	92 ft ²	8.5 m ²
Deck Strength:	51 lb/ft ²	0.3 t/m ²
Class Notations:	BUREAU VERITAS: I +HULL MACH CREWBOAT SEA AREA 3	

Capacities

Deck Cargo:	1 lt	1 t
Fuel Oil:	500 gal	1.9 m ³
Fresh Water:	84.3 gal	0.3 m ³

TIDEWATER

Find out more

tdw.com

Pg.2 Further Specifications

Pg.3 General Arrangement



Machinery

Main Engines (2):	CAT C18		
<i>Total HP:</i>	1,340		
Propellers (2):	HAMILTON HTX-30 WATERJETS		
Primary Generators (1):	10 kw	230 v	50 hz
<i>Driven by:</i>	CAT C1.5		

Performance*

Fuel Consumption Vs Speed	
<i>Maximum:</i>	6.6 m ³ /day (72.4 gph) @ 24 knots
<i>Cruising:</i>	5.6 m ³ /day (61.6 gph) @ 20 knots
<i>Economical:</i>	4.6 m ³ /day (50.4 gph) @ 18 knots
<i>Standby:</i>	0.1 m ³ /day (1.2 gph) @ 0 knots
Range @ 20 Knots:	160 nm

Deck Equipment

Anchors (1):	14.5 KG FORTRESS FX-55
Anchor Chain:	10 m of 10 mm chain per side

Nav/Comms Equipment

Radar(s):	1
Depth Sounder:	1
Radio:	2 x VHF

Accommodations

Passenger Seats:	30
Certified to Carry:	31

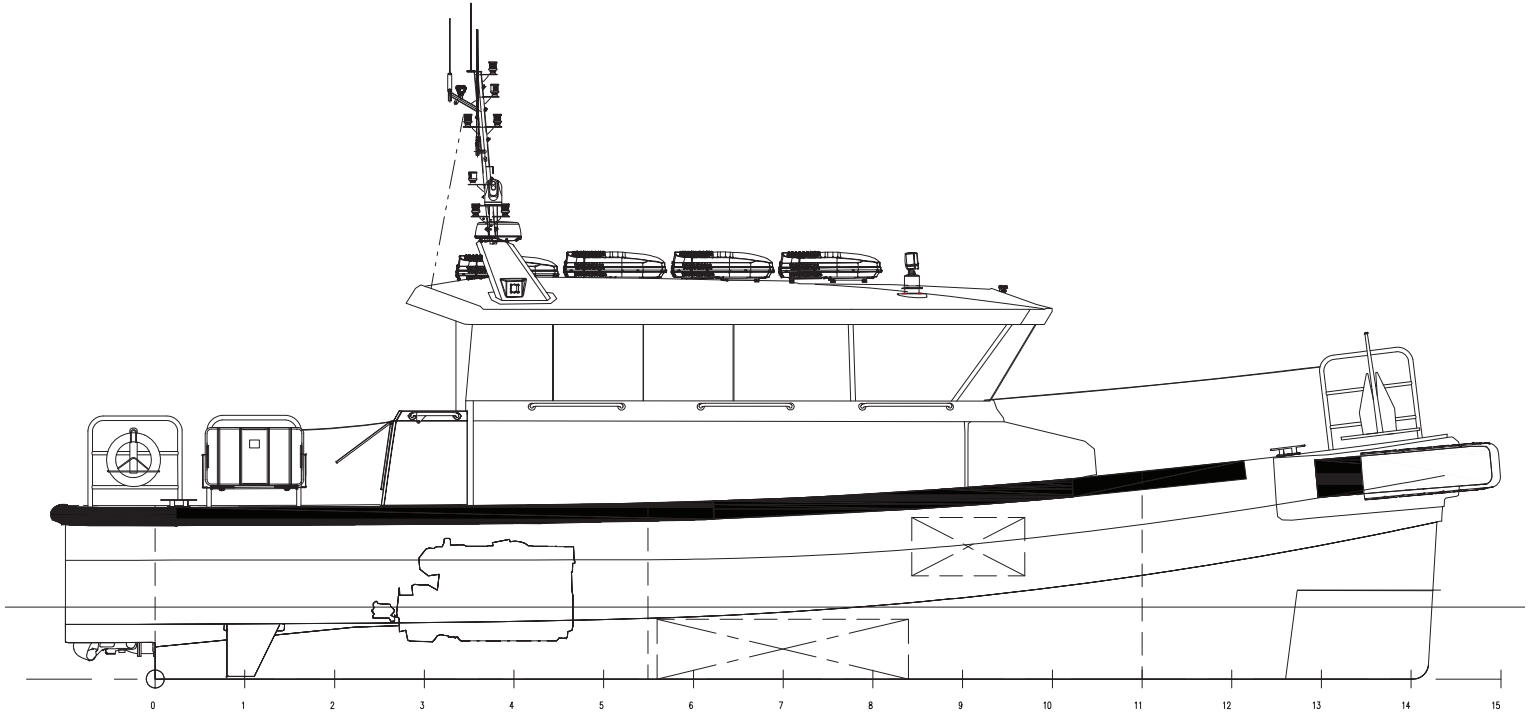
Special Equipment

Misc:	*Fuel and water shown for ship's use.
--------------	---------------------------------------

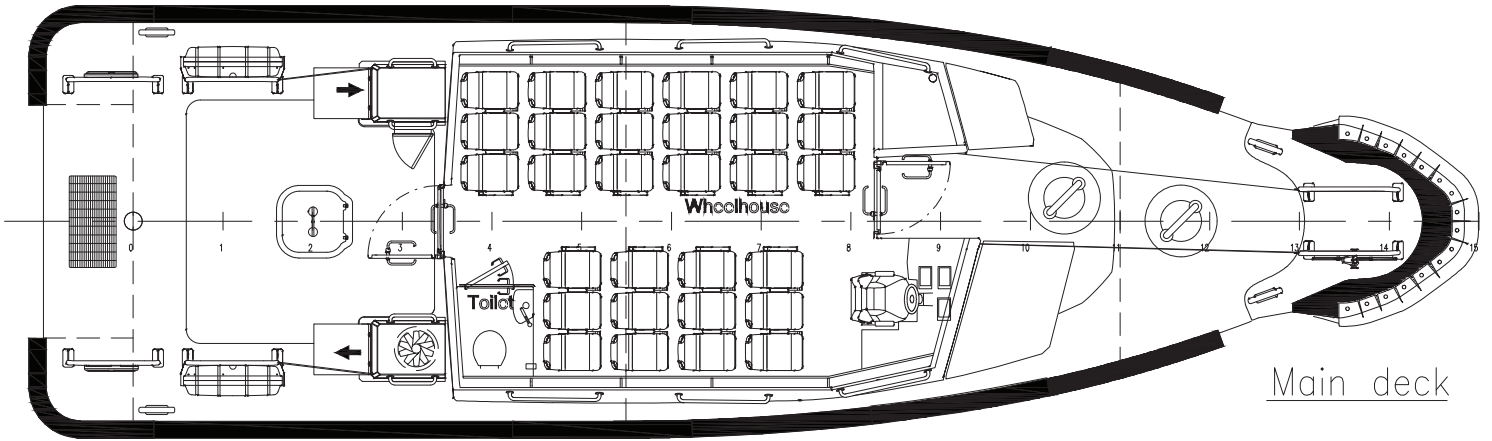
Registration

Flag: LIBERIA	Home Port: MONROVIA
Year Built: 2025	Call Sign: 5LSM6
Builder:	DAMEN SHIPYARDS ANTALYA
Tonnage (ITC):	36 GT 10 NT

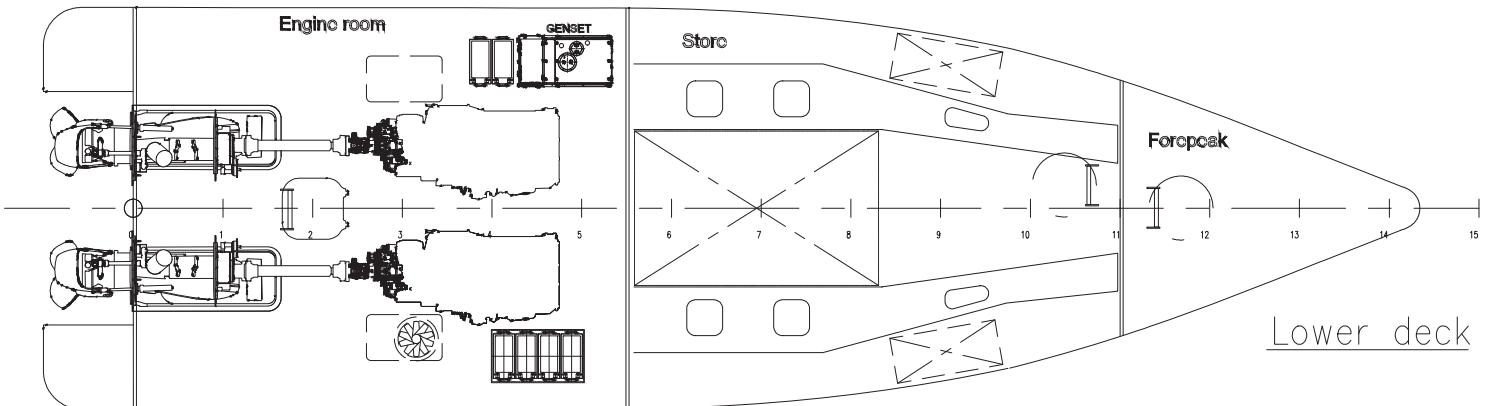
*Approximate values assuming Ideal Conditions



Profile



Main deck



Lower deck