

# SYNERGY TIDE



## STX PSV 09 L CD PLATFORM SUPPLY VESSEL

### Vessel Characteristics

Length, Overall:	288.4 ft	87.9 m
Beam:	62.3 ft	19 m
Depth:	26.3 ft	8 m
Maximum Draft:	21.7 ft	6.6 m
Light Draft:	11.8 ft	3.6 m
Minimum Height:	89.9 ft	27.4 m
Freeboard:	4.6 ft	1.4 m
Displacement:	7,450 lt	7,570 mt
Deadweight:	4,450 lt	4,520 mt
Clear Deck Space:	203 x 52 ft	62 x 16 m
Clear Deck Area:	10,800 ft <sup>2</sup>	1000 m <sup>2</sup>
Deck Strength FWD:	1,020 lb/ft <sup>2</sup>	5 t/m <sup>2</sup>
Deck Strength AFT:	2,050 lb/ft <sup>2</sup>	10 t/m <sup>2</sup>
Class Notations:	ABS: Offshore Support Vessel (OSR-C1), FFV 1, A1, AMS, ACCU, DPS-2, ENVIRO, HAB(WB), HDC (10t/m <sup>2</sup> MD AFT Fr. 30 & 5t/m <sup>2</sup> MD Fr. 30 to 87), HLC (2.8, TANKS 28 - 35), IHM, NBLES	

### Capacities

Deck Cargo:	2,560 lt	2,600 t
Fuel Oil:	292,000 gal	1,110 m <sup>3</sup>
Potable Water:	41,300 gal	160 m <sup>3</sup>
Fresh Water:	172,000 gal	650 m <sup>3</sup>
Drill/Ballast Water:	677,000 gal	2,560 m <sup>3</sup>
Bulk Tanks (6 tanks):	11,300 ft <sup>3</sup>	320 m <sup>3</sup>
Liquid Mud (2.8 SG*):	6,080 bbl	970 m <sup>3</sup>
<small>*Max Structural Specific Gravity</small>		
Methanol:	1,020 bbl	160 m <sup>3</sup>
Base Oil:	2,540 bbl	400 m <sup>3</sup>
Fire Fighting Foam:	4,120 gal	15.6 m <sup>3</sup>

## TIDEWATER

Find out more

[tdw.com](http://tdw.com)

Pg.2 Further Specifications

Pg.4 Capacity Table

Pg.3 General Arrangement

Pg.5 DP Capability Plot



### Machinery

<b>Diesel Electric Vessel</b>			
<i>Propulsive/Total HP:</i>	6,700 / 8,310		
<b>Z-Drives:</b>	Yes		
<b>Propellers (2):</b>	2500KW SCHOTTEL TWIN PROPELLERS		
<b>Primary Generators (4):</b>	1,550 kw	690 v	60 hz
<i>Driven by:</i>	CAT 3512TA (C)		
<b>Emergency Generators (1):</b>	98 kw	690 v	60 hz
<i>Driven by:</i>	PERKINS 6TG2AM		
<b>Bow Thruster (2):</b>	BRUNVOLL FU74LT		
<i>Driven by:</i>	880KW ELECTRIC MOTORS		
<b>Total Thrust:</b>	29.5 st	26.8 mt	

### Deck Equipment

<b>Anchors (2):</b>	SPEK TYPE
<b>Anchor Chain:</b>	280 m of 46 mm chain per side
<b>Windlass:</b>	2x ADRIA 10T PULL
<b>Crane (1):</b>	5 t @ 10 m
<b>Aux. Crane (1):</b>	1 t @ 10 m
<b>Capstans (2):</b>	8 t ADRIA
<b>Tugger (2):</b>	10 t ADRIA

### Accommodations

<b>No. of Berths:</b>	26
<b>Cabins:</b>	10x1-man, 4x2-man & 2x4-man
<b>Certified to Carry:</b>	26
<b>Galley seating:</b>	20
<b>Hospital:</b>	Yes

### Registration

<b>Flag:</b> VANUATU	<b>Home Port:</b> PORT VILA
<b>Hull Number:</b> 1067	<b>IMO N°:</b> 9685994
<b>Year Built:</b> 2015	<b>Call Sign:</b> YJXP9
<b>Builder:</b>	P.T. ASL SHIPYARD INDONESIA
<b>Tonnage (ITC):</b>	3921 GT / 1666 NT

### Performance\*

<b>Fuel Consumption Vs Speed</b>		
<i>Maximum:</i>	22.8 m <sup>3</sup> /day (250 gph) @ 14.5 knots	
<i>Cruising:</i>	13 m <sup>3</sup> /day (140 gph) @ 12 knots	
<i>Economical:</i>	10.4 m <sup>3</sup> /day (110 gph) @ 10.5 knots	
<i>Standby:</i>	2.2 m <sup>3</sup> /day (24.2 gph) @ 0 knots	
<b>Range @ 12 Knots:</b>	24,500 nm	
<b>Transfer Rates</b>		
<i>Fuel Oil:</i>	1,100 gpm @ 300 ft	250 m <sup>3</sup> /h @ 90 m
<i>Fresh Water:</i>	1,100 gpm @ 300 ft	250 m <sup>3</sup> /h @ 90 m
<i>Drill/Ballast Water:</i>	1,100 gpm @ 300 ft	250 m <sup>3</sup> /h @ 90 m
<i>Bulk:</i>	31.3 cfm @ 190 ft	53.1 m <sup>3</sup> /h @ 57 m
<i>Liquid Mud:</i>	440 gpm @ 300 ft	100 m <sup>3</sup> /h @ 90 m
<i>Base Oil:</i>	440 gpm @ 300 ft	100 m <sup>3</sup> /h @ 90 m
<i>Brine:</i>	330 gpm @ 300 ft	75 m <sup>3</sup> /h @ 90 m
<i>Methanol:</i>	330 gpm @ 300 ft	75 m <sup>3</sup> /h @ 90 m

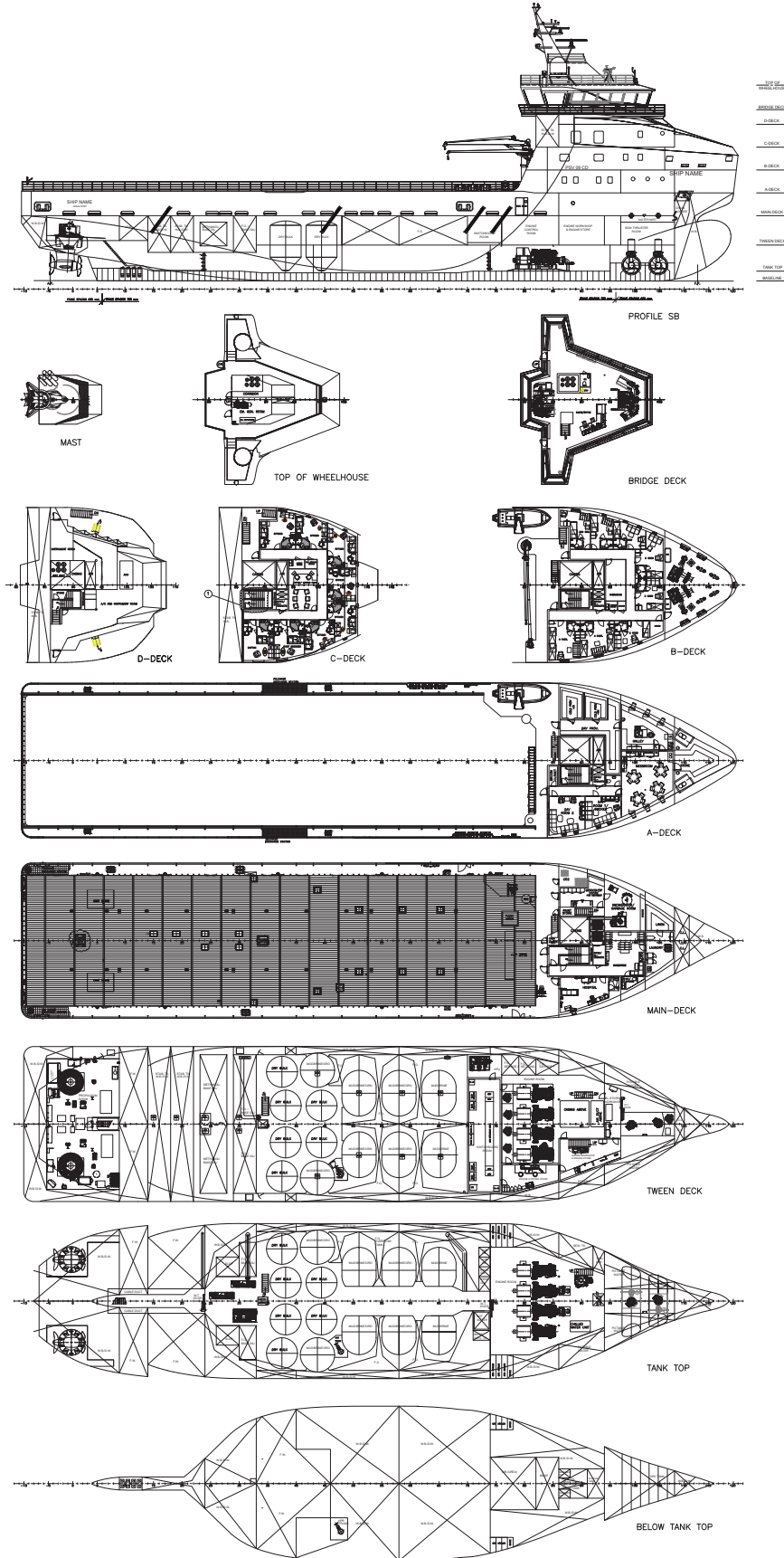
### Nav/Comms Equipment

<b>Radar(s):</b>	2
<b>Depth Sounder:</b>	1
<b>Gyro Compass:</b>	3
<b>Wind Speed Indicators:</b>	3
<b>Doppler Log:</b>	1
<b>Radio:</b>	2 x VHF; 1 x SSB
<b>Sat Com:</b>	INMARSAT-C

### Special Equipment

<b>Firefighting:</b>	FiFi-1
<b>Dynamic Positioning:</b>	DP-2
<b>Ref. Systems:</b>	3 x MRU; 2 x DGPS; 1 x Laser-based
<b>Mud Circulation System/ Mud Mixers:</b>	Yes/Yes
<b>Tank Cleaning:</b>	Yes
<b>Rescue Boat:</b>	15M NOREQ FRB-650
<b>Gas Detection:</b>	FIXED GAS DETECTION SYSTEM
<b>Misc:</b>	MSD - 30 PERSONS, ORO Capacity - 707.4m <sup>3</sup>

\*Approximate values assuming Ideal Conditions





Tank	Contents	Volume m <sup>3</sup>	Base Oil	Fuel Oil	Dry Bulk	DW/WB	Potable Water	Fresh Water	Brine	Liquid Mud	Methanol	Lube Oil	Foam	Oil Disp.
01 WB/DW	DW/WB	110.4				110.4								
06 WB/DW	DW/WB	81.4				81.4								
07 WB/DW	DW/WB	77.6				77.6								
08 WB/DW	DW/WB	48.2				48.2								
10 WB/Dw	DW/WB	71.2				71.2								
11 WB/DW	DW/WB	71.2				71.2								
12 WB/DW	DW/WB	78.7				78.7								
13 WB/DW	DW/WB	78.7				78.7								
22 WB/DW	DW/WB	148.5				148.5								
23 WB/DW	DW/WB	127.1				127.1								
24 WB/DW	DW/WB	250.7				250.7								
25 WB/DW	DW/WB	232.9				232.9								
26 WB/DW	DW/WB	229.9				229.9								
79 WB/DW	DW/WB	208.5				208.5								
81 WB/DW	DW/WB	48.2				48.2								
82 WB/DW	DW/WB	128.2				128.2								
83 WB/DW	DW/WB	128.2				128.2								
84 WB/DW	DW/WB	122.2				122.2								
87 WB/DW	DW/WB	115.1				115.1								
88 WB/DW	DW/WB	81.7				81.7								
89 WB/DW	DW/WB	82.1				82.1								
97 WB/DW	DW/WB	42.7				42.7								
02 FW TK	Ship's FW	78.1					78.1							
03 FW TK	Ship's FW	78.1					78.1							
04 FW TK	FW	74.8						74.8						
14 FW TK	FW	18.5						18.5						
15 FW TK	FW	18.5						18.5						
18 FW TK	FW	70.5						70.5						
19 FW TK	FW	70.5						70.5						
20 FW TK	FW	148.1						148.1						
21 FW TK	FW	148.1						148.1						
85 FW TK	FW	51.5						51.5						
86 FW TK	FW	51.5						51.5						
42 FO TK	FO	273.2		273.2										
43 FO TK	FO	273.2		273.2										
44 FO TK	FO	169.1		169.1										
45 FO TK	FO	61.6		61.6										
46 FO/BO TK	FO/BO	120.8	120.8	120.8										
47 FO/BO TK	FO/BO	120.8	120.8	120.8										
48 FO OVERFLOW	FO	42.9		42.9										
49 FO TK	FO	87.6		87.6										
50 FO SERV 1 TK	FO	18.4		18.4										
51 FO SERV 2 TK	FO	17.1		17.1										
71 FO SETTLING	FO	16.2		16.2										
99 FO EMERG	FO	2.6		2.6										
52 MET/BO	METH/BO	81.0	81.0								81.0			
53 MET/BO	METH/BO	80.9	80.9								80.9			
28 MUD TK	LM	130.0								130.0				
29 MUD TK	LM	130.0								130.0				
30 MUD/ORO TK	LM/ORO	130.0								130.0				
31 MUD/ORO TK	LM/ORO	130.0								130.0				
32 MUD/ORO TK	LM/ORO	129.9								129.9				
33 MUD/ORO TK	LM/ORO	129.9								129.9				
34 MUD/ORO TK	LM/ORO	93.8								93.8				
35 MUD/ORO TK	LM/ORO	93.8								93.8				
36 CEM TANK	DRY BULK	53.1			53.1									
37 CEM TANK	DRY BULK	53.1			53.1									
38 CEM TANK	DRY BULK	53.1			53.1									
39 CEM TANK	DRY BULK	53.1			53.1									
40 CEM TANK	DRY BULK	53.1			53.1									
41 CEM TANK	DRY BULK	53.1			53.1									
76 FOAM	FOAM	6.6											6.6	
95 FOAM	FOAM	9.0											9.0	
63 LUBE OIL 2	LO	5.3										5.3		
64 LUBE OIL 1	LO	5.3										5.3		
77 LUBE OIL AFT	LO	5.1										5.1		
Total Volume [m <sup>3</sup> ]			403.5	1,203.5	318.6	2,563.4	156.2	652.0	0.0	967.4	161.9	15.7	15.6	0.0
Spec Sheet Total Volume [m <sup>3</sup> ]			403.5	1,106.3	318.6	2,563.4	156.2	652.0	0.0	967.4	161.9	15.7	15.6	0.0

\*Capacities shown are for lead vessel. Actual capacities may vary slightly.

\*Capacities shown in **RED** are excluded from the total volume.

\*Capacities shown in **BLUE** are included in another Tank's Capacity.

\*Capacities shown in **GREEN** are counted for multiple Tank Capacities.

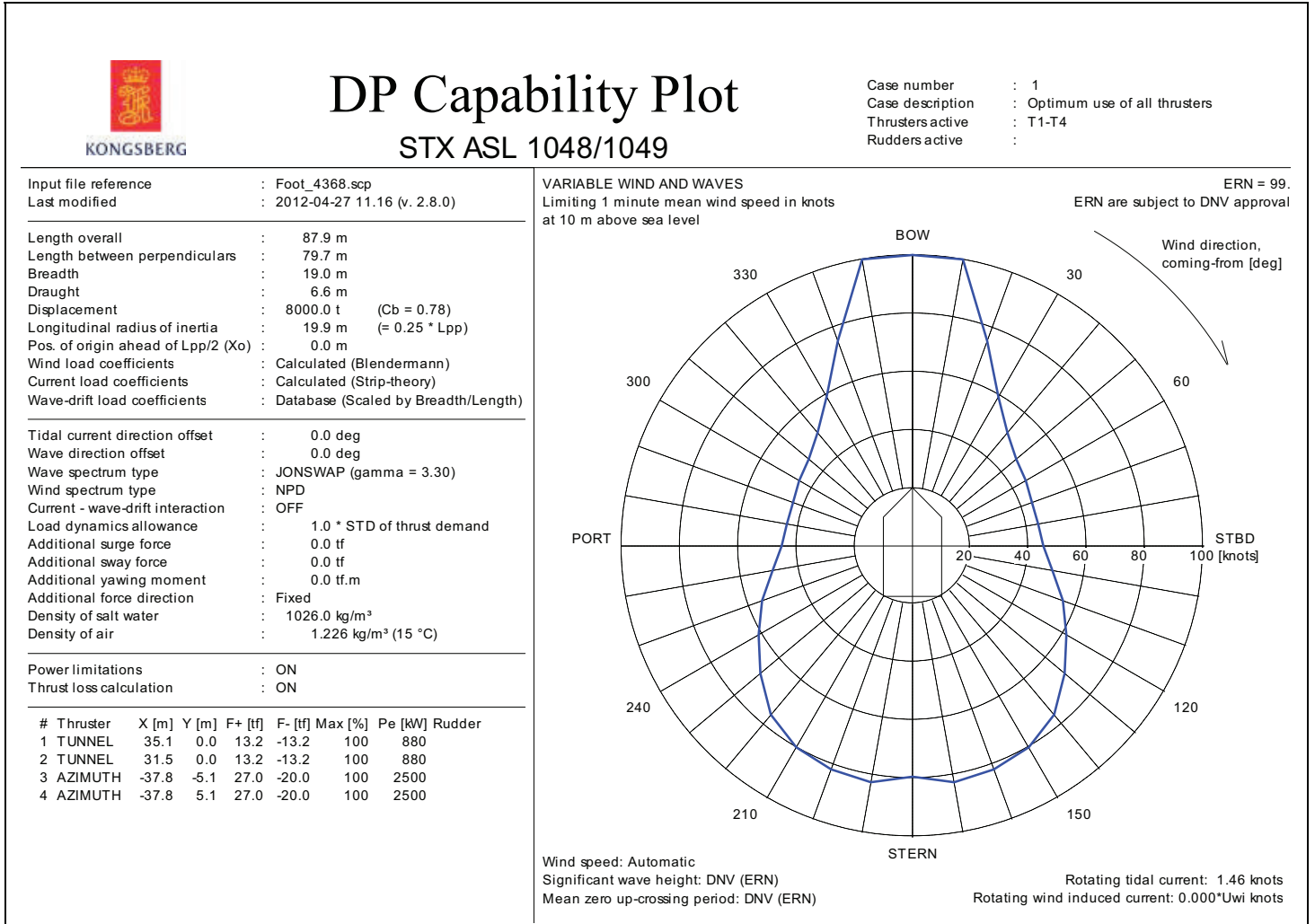


Figure 10: DP capability envelope for case 1.